

GOOD  
Vibes  
ONLY

  
**PROMINENCE**  
ESTATES



**RESIDENTIAL**  
PROPERTY EXPERTS

COVENTRY, WARWICKSHIRE  
& LEAMINGTON SPA

**ST MARGARET ROAD,**  
STOKE, COVENTRY, CV1 2BU

**£550 PCM**



ST MARGARET ROAD



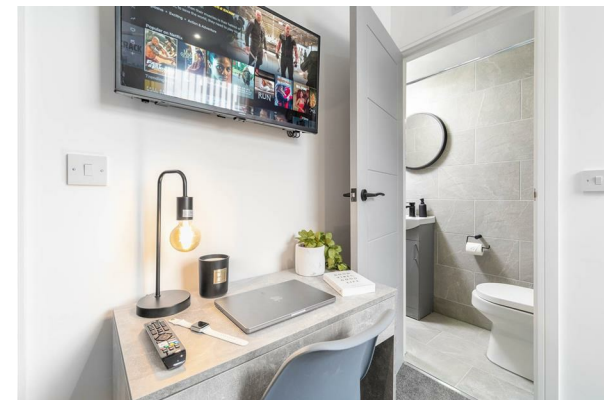
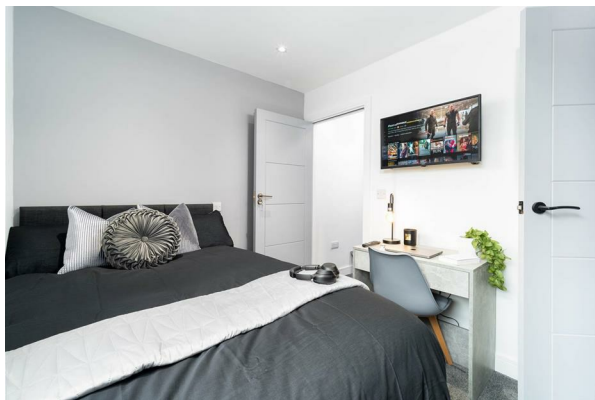
**PROMINENCE**  
ESTATES

Luxuriously Modern 5 Bedroom Student House With En-Suite Bedrooms. **BILLS INCLUDED + LED TV'S** in each bedroom. 10 Minutes Walk From University - This is a brand new, top spec and luxurious house which has undergone extensive renovation providing students with a perfect place to live. The property comprises; modern open plan lounge area with LED TV and kitchen benefiting from breakfast bar with stools, modern cooker, fridge/freezers, washing machine and dryer. The house comes fully furnished with built in wardrobes, beds, desks and chairs. The property also benefits from a low maintenance landscaped garden with artificial lawn and seating area.

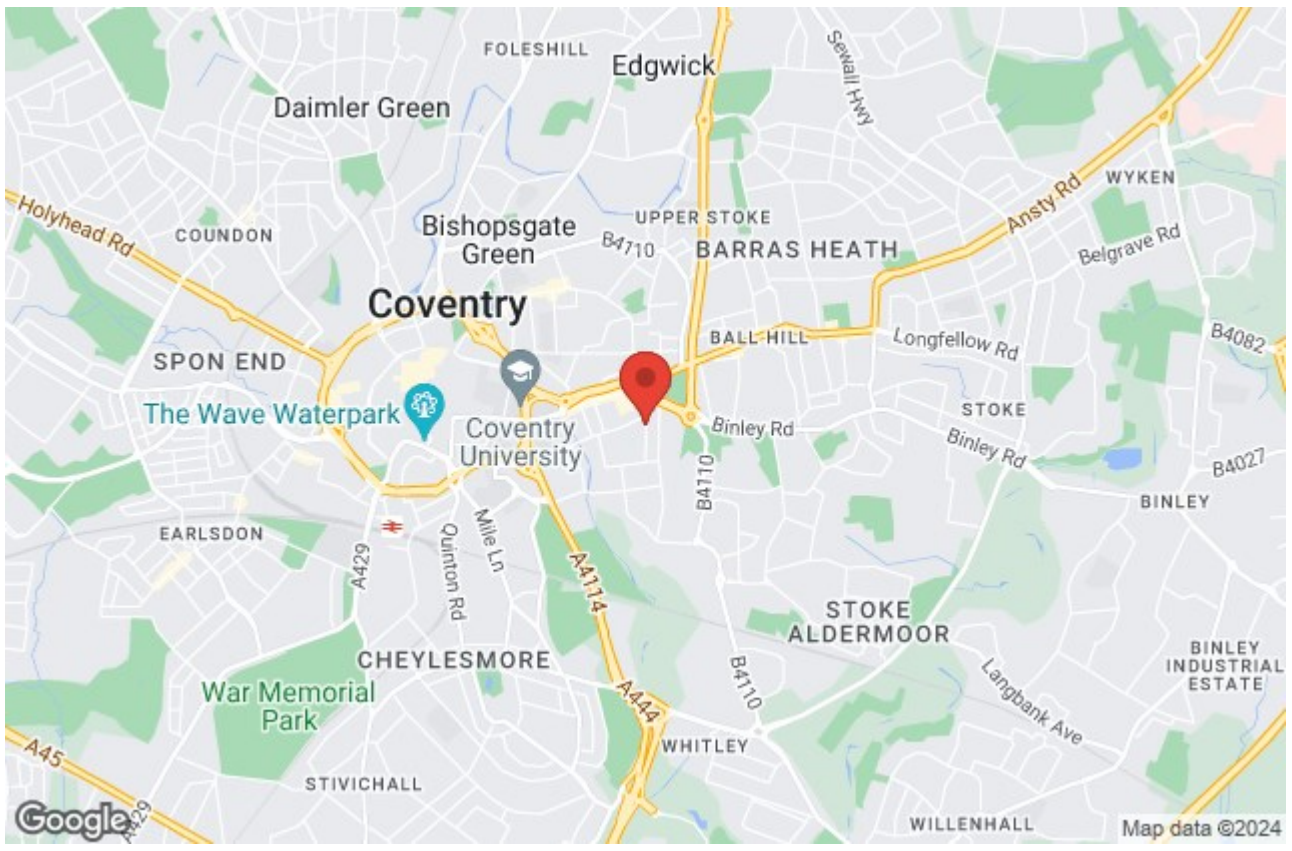
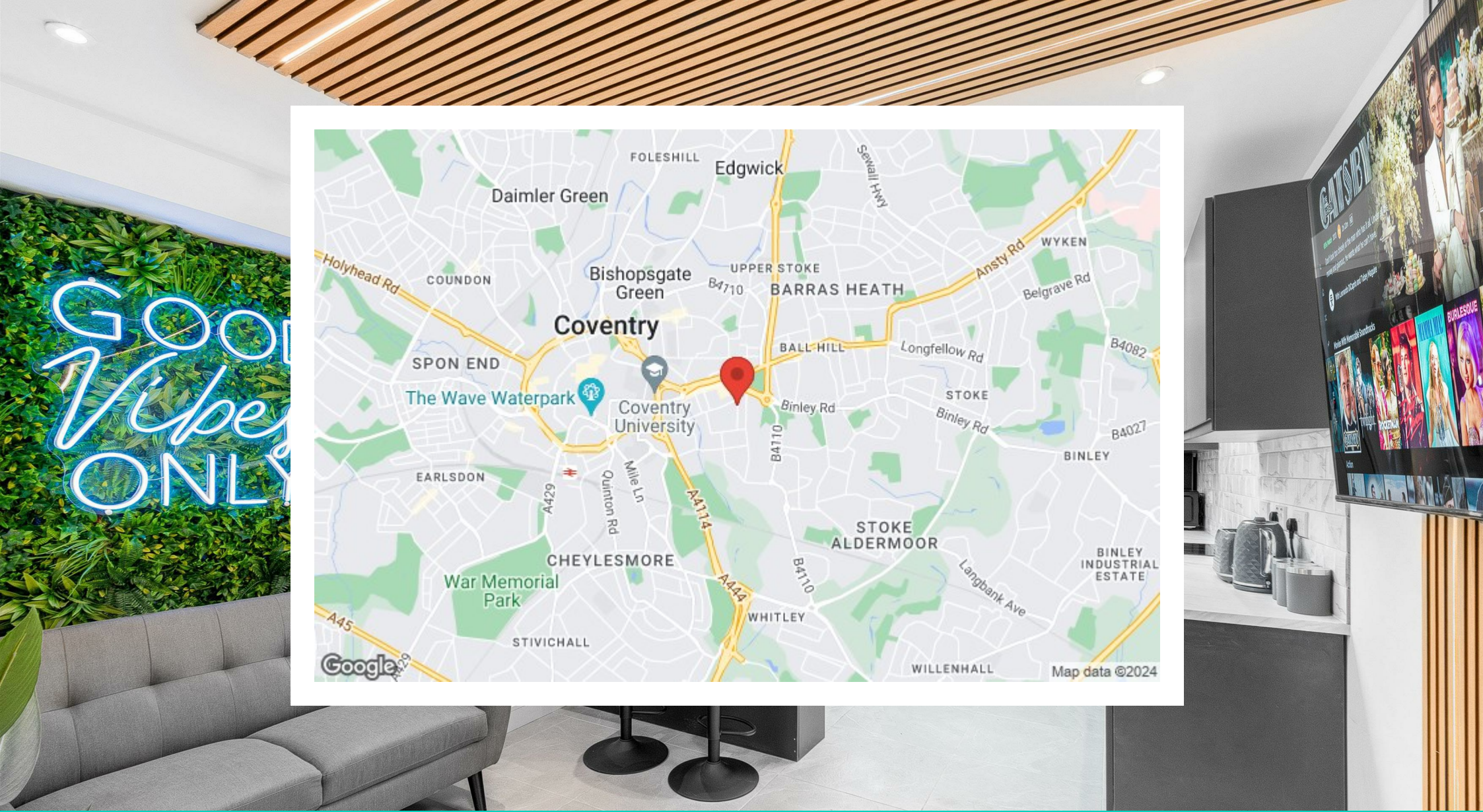
Utility bills included: Gas, Electricity, Water, WiFi.











Prominence Estates  
5 Queen Isabels Avenue,  
Cheylesmore,  
Coventry,  
CV3 5GE

02476 309 826  
sales@prominenceestates.com  
www.prominenceestates.com

  
**PROMINENCE**  
ESTATES