

  
**PROMINENCE**  
ESTATES



**RESIDENTIAL**  
PROPERTY EXPERTS

COVENTRY, WARWICKSHIRE  
& LEAMINGTON SPA

**BENNETTS ROAD NORTH,**  
KERESLEY END, COVENTRY, CV7 8JX

**£950 PCM**

## BENNETTS ROAD NORTH



**PROMINENCE**  
ESTATES

This recently renovated one bedroom annex is perfect for those seeking modern comfort and tranquility. The property has been refurbished to a great standard, presenting a welcoming atmosphere from the moment you step through the door.

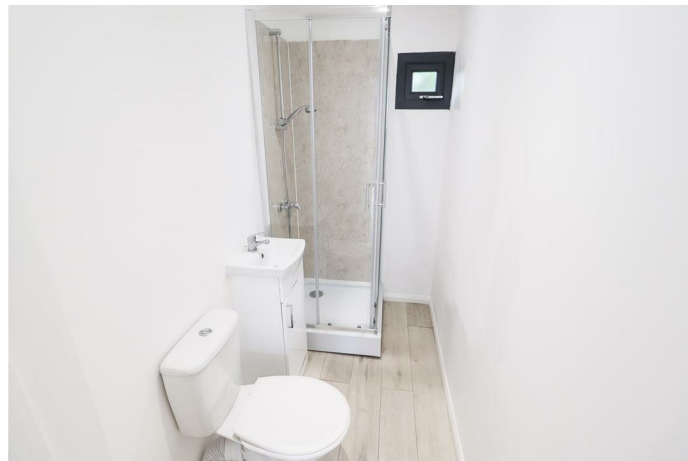
Upon entry, you are greeted by a well-appointed hallway that leads seamlessly to all areas of the annex. Toward the end of the hallway, you have a shower room, the heart of the annex is the spacious open-plan living area, comprising a modern kitchen, dining space, and lounge area. This versatile layout not only enhances the sense of space but also offers flexibility for both relaxation and entertaining guests. The kitchen features integrated appliances and ample storage, making meal preparation a pleasure. The generously sized bedroom provides a peaceful sanctuary, perfect for restful nights. Natural light floods through the windows, creating a bright

and airy atmosphere throughout the day.

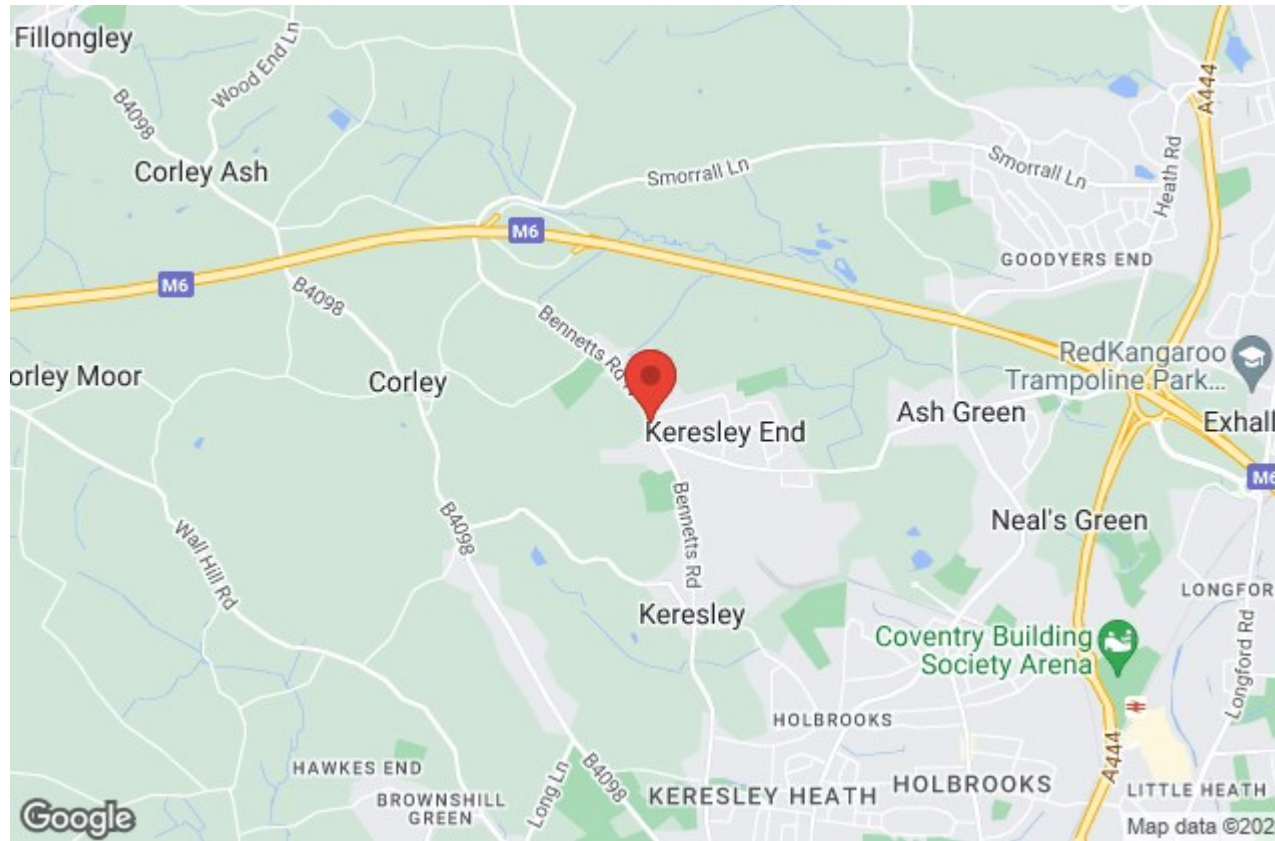
One of the standout features of this property is its private block-paved garden area. Ideal for enjoying outdoor dining, gardening, or simply soaking up the sunshine, this secluded space adds a unique charm to the annex.

Benefiting from inclusive bills, this annex offers hassle-free living where you can move in and start enjoying your new home immediately.

Located within easy reach of amenities such as schools, motorways, and local shops and supermarkets. This convenient access ensures that daily needs and commuting are effortlessly catered for.







Prominence Estates  
5 Queen Isabels Avenue,  
Cheylesmore,  
Coventry,  
CV3 5GE

02476 309 826  
sales@prominenceestates.com  
www.prominenceestates.com

**PROMINENCE**  
ESTATES