

  
**PROMINENCE**  
ESTATES



**RESIDENTIAL**  
PROPERTY EXPERTS

COVENTRY, WARWICKSHIRE  
& LEAMINGTON SPA

**CHAFFINCH ROAD,**  
COVENTRY, CV4 8NG

CHAFFINCH ROAD

**£550 PER MONTH**

# CHAFFINCH ROAD

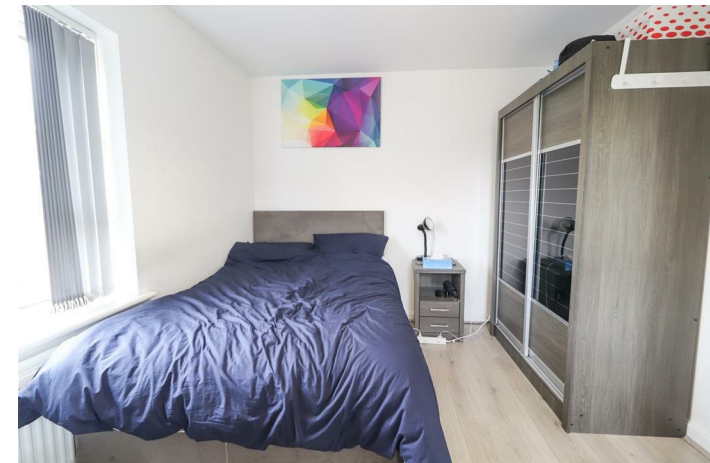
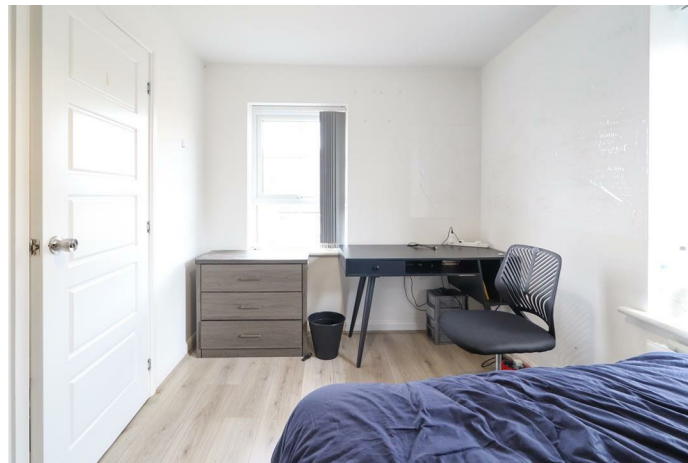


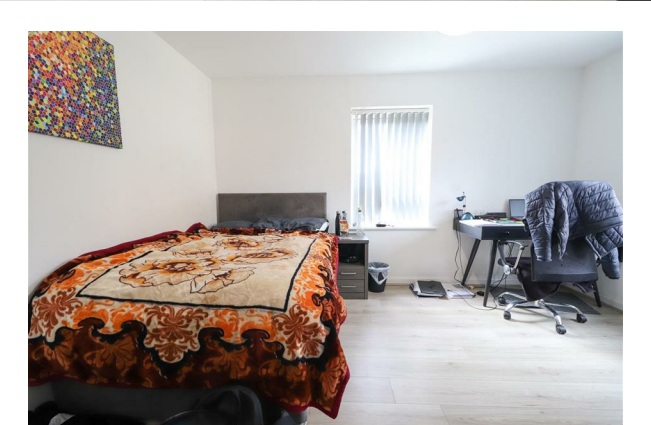
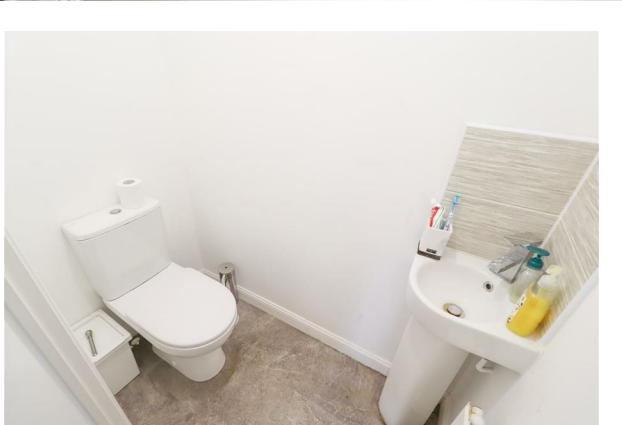
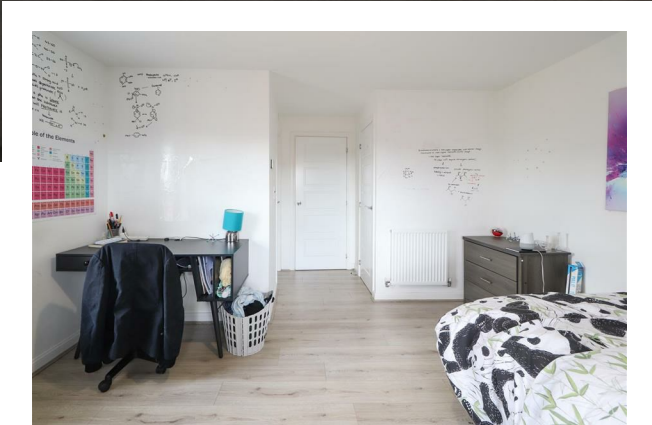
# PROMINENCE

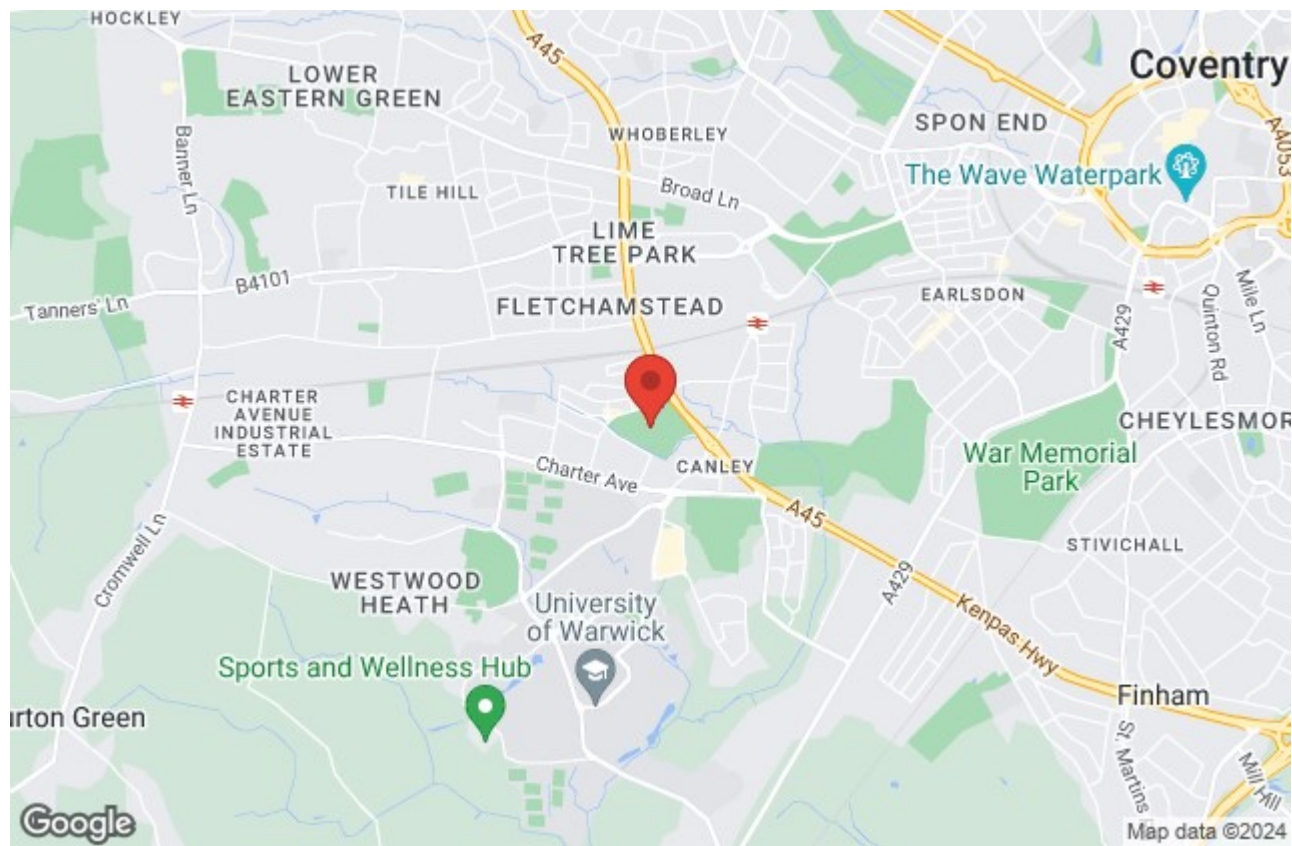
ESTATES

**\*\*Rooms Available In A Shared House\*\*** Well-presented and modern 5 bedroom property located in a new development - Within walking distance to Warwick University. In brief, the property comprises; entrance hallway, ground floor WC, spacious and modern open plan kitchen/living room with french doors leading out into the large well-maintained garden. On the ground floor there is an spacious bedroom, to the first floor there are a two bedrooms with a shared bathroom, and on the second floor follows two spacious bedrooms with another shared bathroom.

To Arrange a viewing contact Prominence Estates on 02476309826







Prominence Estates  
5 Queen Isabels Avenue,  
Cheylesmore,  
Coventry,  
CV3 5GE

02476 309 826  
sales@prominenceestates.com  
www.prominenceestates.com

  
**PROMINENCE**  
ESTATES