



**PROMINENCE**  
ESTATES



**RESIDENTIAL**  
PROPERTY EXPERTS

COVENTRY, WARWICKSHIRE  
& LEAMINGTON SPA



**GORDON STREET,**  
CITY CENTRE, COVENTRY, CV1 3ES

**£600 PCM**



# GORDON STREET



**PROMINENCE**  
ESTATES

Welcome to Gordon Street, located in the heart of Coventry's City Centre! This charming house share offers a cosy reception room, a comfortable bedroom, and a modern en-suite shower room, making it the perfect place to call home.

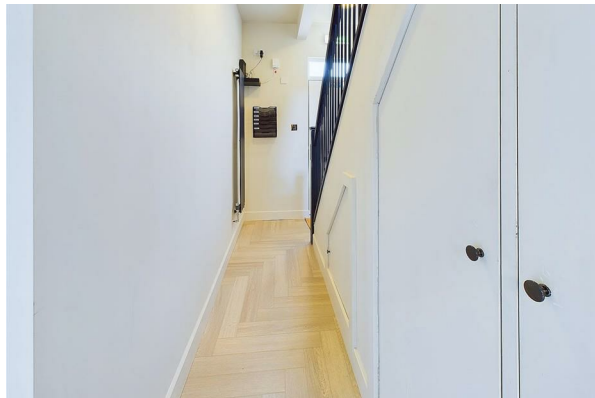
Forget the hassle of furnishing your new home - this property comes fully furnished throughout, allowing you to move in and start enjoying your new space right away. Don't miss out on this fantastic opportunity to live in a beautifully renovated house share in the heart of Coventry.

Recently renovated with great attention to detail, this property boasts a stylish interior design that is sure to impress. The best part? All utility bills are included in the rent - from gas and electricity to water, Wi-Fi, and even council tax.

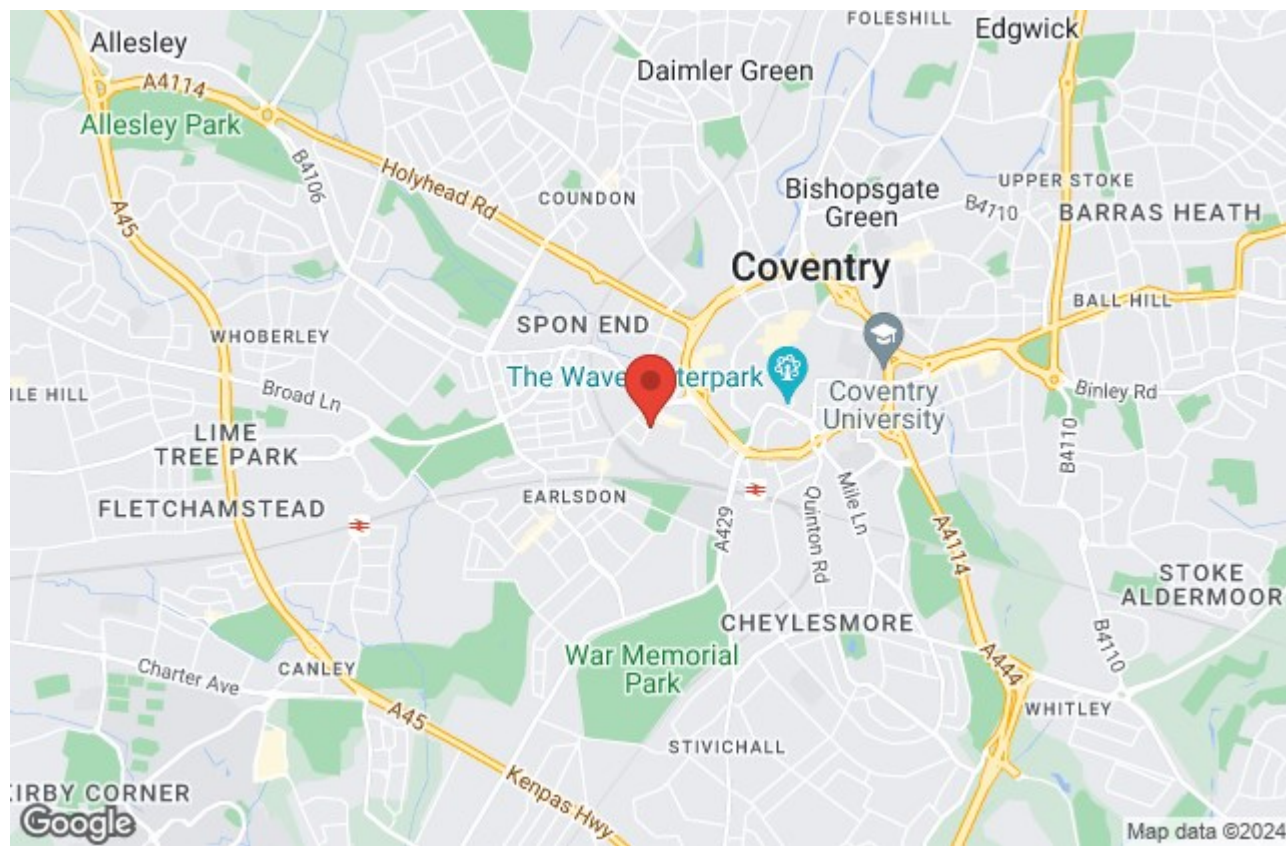
Convenience is key with this property, as it is less than a 5-minute walk into the bustling City Centre, providing easy access to shops, restaurants, and entertainment venues as well as a short walk into Earlsdon and the local High Street.











Prominence Estates  
5 Queen Isabels Avenue,  
Cheylesmore,  
Coventry,  
CV3 5GE

02476 309 826  
sales@prominenceestates.com  
www.prominenceestates.com

  
**PROMINENCE**  
ESTATES