

  
**PROMINENCE**  
ESTATES



**RESIDENTIAL**  
PROPERTY EXPERTS

COVENTRY, WARWICKSHIRE  
& LEAMINGTON SPA

**BEAUCHAMP HOUSE,**  
CITY CENTRE, COVENTRY, CV1 3RX

**£1,150 PCM**

# BEAUCHAMP HOUSE



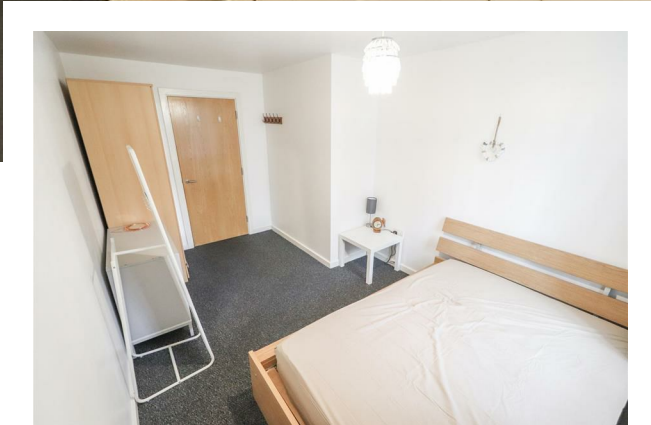
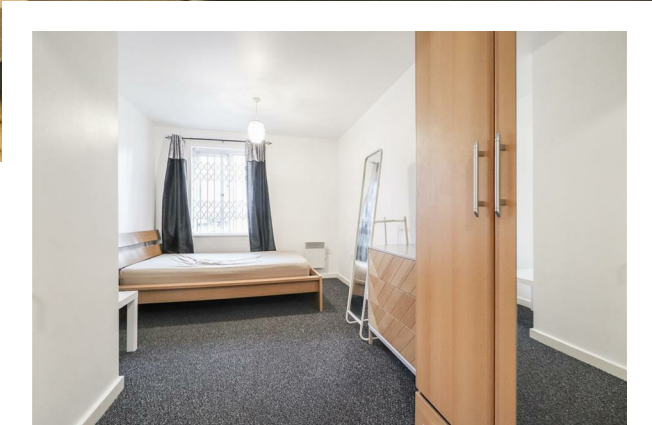
# PROMINENCE

ESTATES

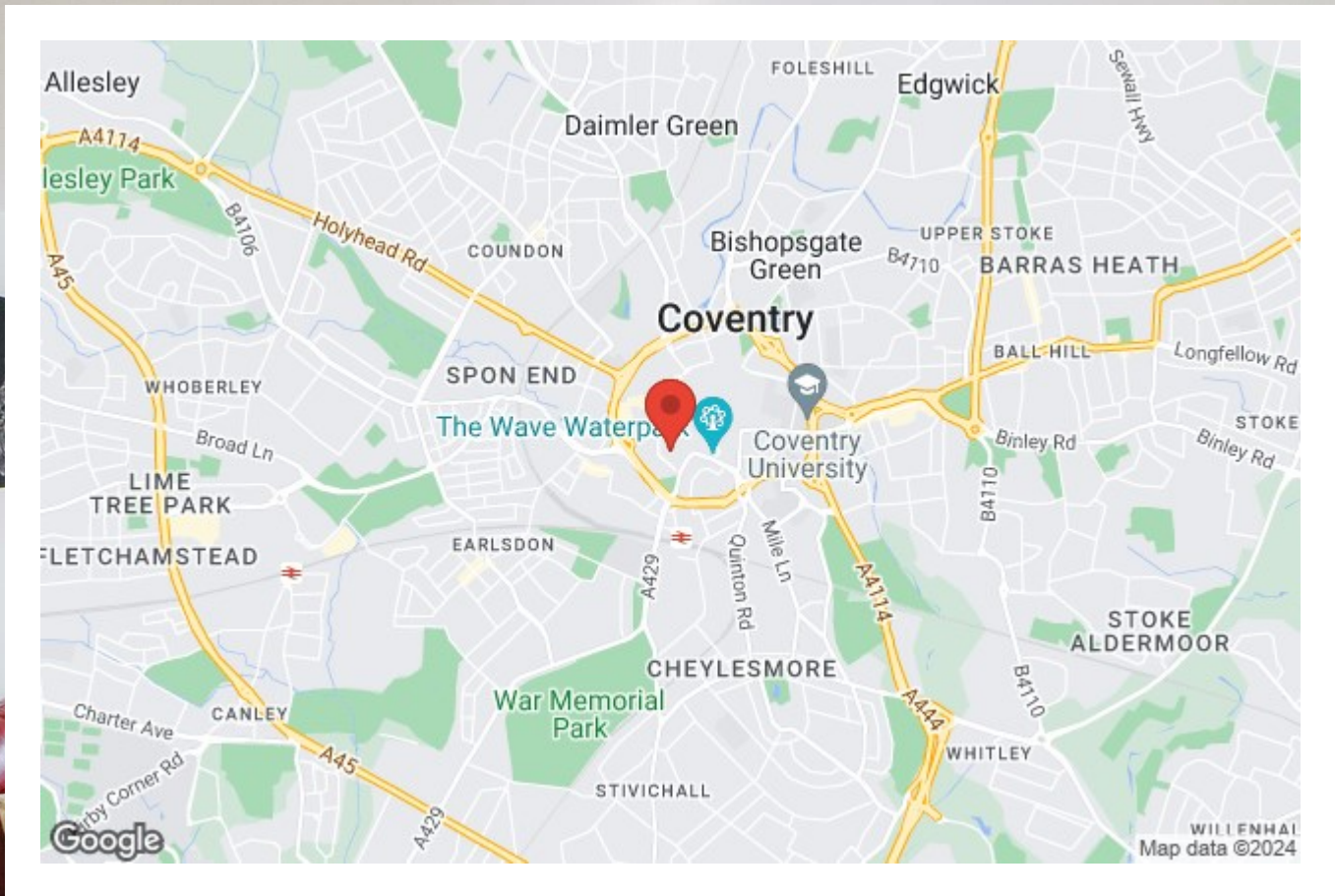
Executive and Spacious Ground Floor City Centre Apartment Boasting a Huge Open Plan Living Room and Kitchen Diner With Balcony. Recently renovated throughout this two bedroom apartment is perfect for those wanting to live in the heart of Coventry City Centre. The apartment benefits from secure gated access and a private underground car park. In brief the apartment comprises of; entrance hallway, great sized double bedroom with en-suite shower room, second spacious bedroom, family bathroom, open plan living room and kitchen with a dining area and a balcony. The apartment comes fully furnished with all furniture and is also one of the larger flats in the development.











Prominence Estates  
5 Queen Isabella Avenue,  
Cheylesmore,  
Coventry,  
CV3 5GE

02476 309 826  
sales@prominenceestates.com  
www.prominenceestates.com

  
**PROMINENCE**  
ESTATES