


PROMINENCE
ESTATES



RESIDENTIAL
PROPERTY EXPERTS

COVENTRY, WARWICKSHIRE
& LEAMINGTON SPA

DAINTREE CROFT,
STYVECHALE, COVENTRY, CV3 5DN

OFFERS OVER
£640,000

DAINTREE CROFT



PROMINENCE

ESTATES

Welcome to your dream home nestled in the heart of Styvechale! This stunning 4-bedroom, 4-bathroom detached residence seamlessly blends modern luxury with timeless charm. Newly developed from an old bungalow in 2020-2021, this home offers a unique fusion of character and contemporary design.

As you step through the front door, you are greeted by a spacious and light-filled entrance hall featuring ambient flooring, adorned with tasteful finishes and designer touches throughout. The layout creates an inviting atmosphere, perfect for both entertaining guests and everyday living.

The gourmet kitchen is a chef's delight, featuring high-end appliances, quartz counter tops, and ample storage space. Whether you're hosting intimate dinners or preparing family feasts, this culinary haven is sure to inspire your inner chef.

Retreat to the tranquil master suite, where luxury meets comfort. With its generous proportions, fitted wardrobe, and spa-like en-suite bathroom, this private sanctuary offers the ultimate in relaxation. Three additional bedrooms provide plenty of space for family members or guests, each boasting its own en-suite for added convenience.

Outside, the meticulously landscaped grounds provide a serene backdrop for outdoor gatherings and al fresco dining. The expansive patio area is perfect for soaking up the sunshine or enjoying a cosy evening by the fire pit.

Located in the sought-after neighborhood of Styvechale, this home offers the perfect blend of privacy and convenience. With its proximity to local amenities, parks, and top-rated schools, this is an opportunity not to be missed.

Experience the epitome of luxury living in Styvechale – schedule your private viewing today and make this exquisite residence your own.

[Living Room](#)

[Kitchen/Dining Room](#)

[Utility Room](#)

[W/c](#)

[Office](#)

[Master Bedroom](#)

[Master En-suite](#)

[Bedroom Two](#)

[En-suite](#)

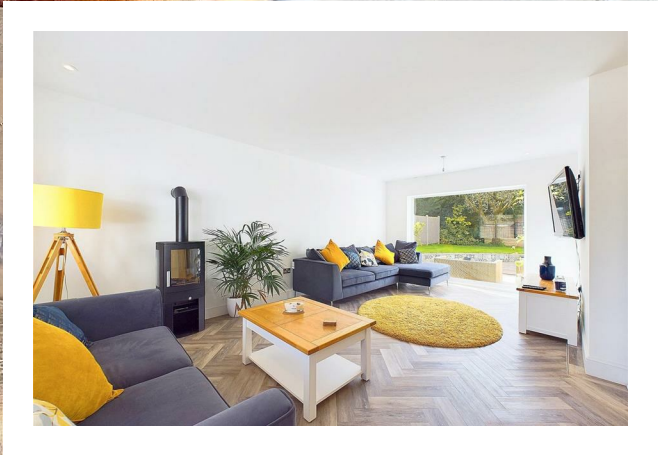
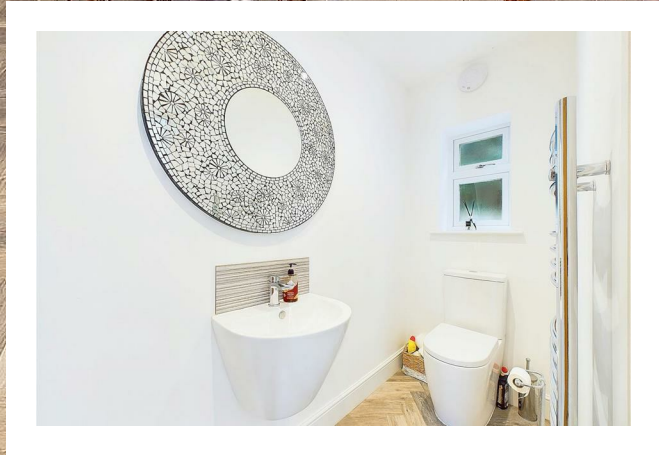
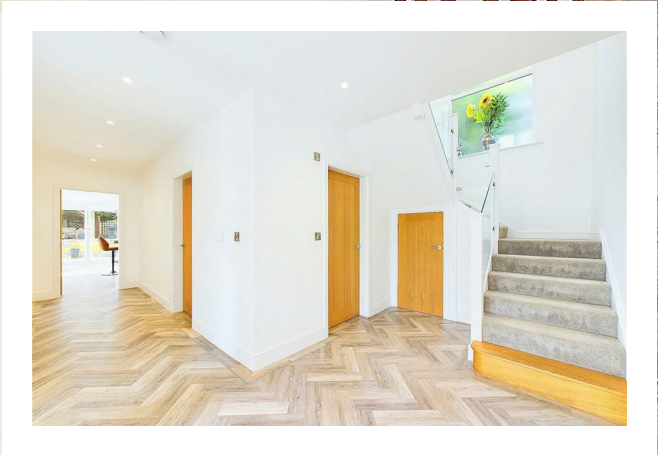
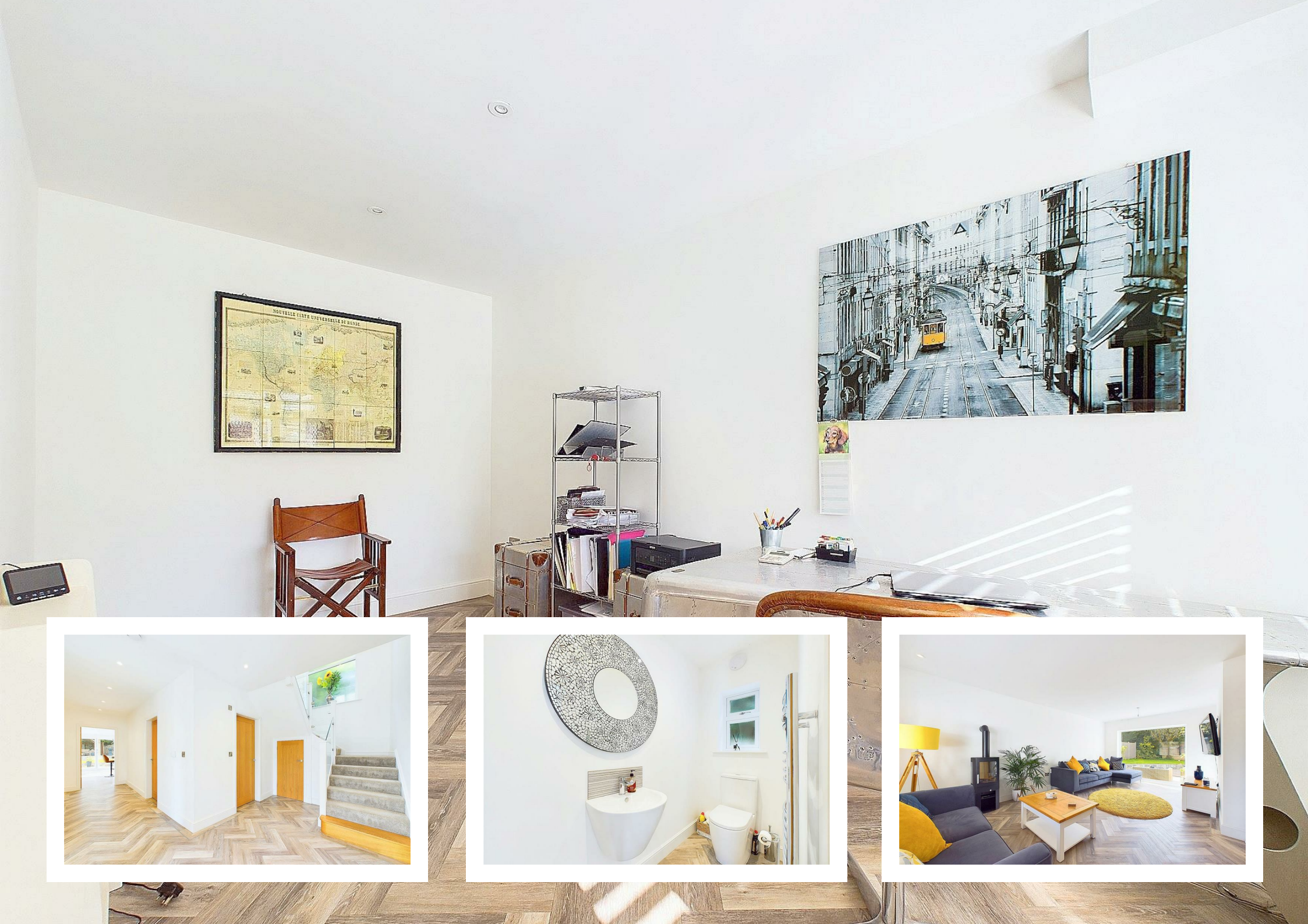
[Bedroom Three](#)

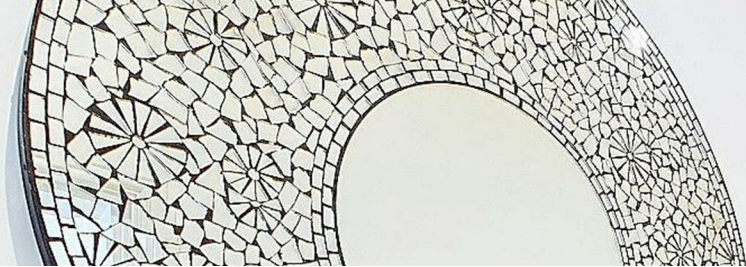
[En-suite](#)

[Bedroom Four](#)

[En-suite](#)

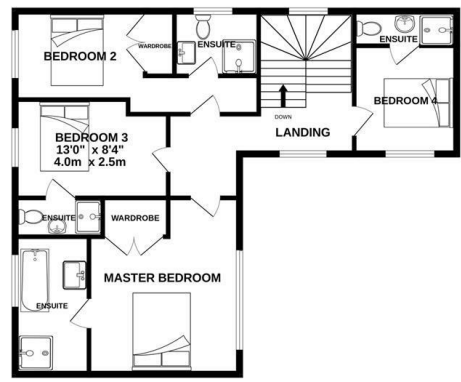
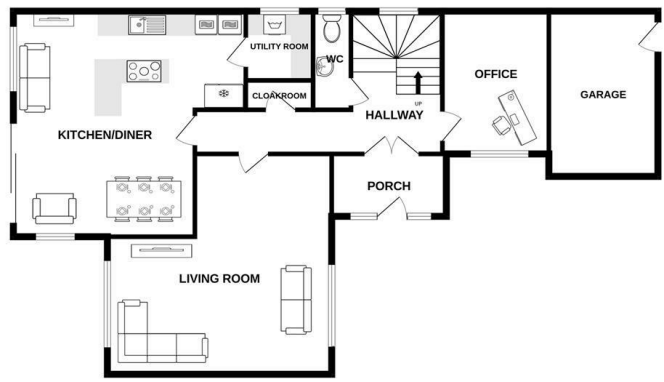






GROUND FLOOR

1ST FLOOR



Whilst every attempt has been made to ensure the accuracy of the floorplan contained here, measurements of doors, windows, rooms and any other items are approximate and no responsibility is taken for any error, omission or mis-statement. This plan is for illustrative purposes only and should be used as such by any prospective purchaser. The services, systems and appliances shown have not been tested and no guarantee as to their operability or efficiency can be given.
Made with Metropix ©2024

Energy Efficiency Rating

	Current	Potential
Very energy efficient - lower running costs		
(92 plus) A		
(81-91) B		83
(69-80) C		
(55-68) D	60	
(39-54) E		
(21-38) F		
(1-20) G		
Not energy efficient - higher running costs		
England & Wales	EU Directive 2002/91/EC	

Prominence Estates
5 Queen Isabels Avenue,
Cheylesmore,
Coventry,
CV3 5GE

02476 309 826
sales@prominenceestates.com
www.prominenceestates.com

