


PROMINENCE
ESTATES



RESIDENTIAL
PROPERTY EXPERTS

COVENTRY, WARWICKSHIRE
& LEAMINGTON SPA

CHARTER AVENUE,
COVENTRY, CV4 8GE

£3,900 PER CALENDAR

CHARTER AVENUE



PROMINENCE

ESTATES

Welcome to your ideal student accommodation near Warwick University and Cannon Park Shopping Park, suitable for 7 or 8 Students! This fully furnished property offers the perfect blend of comfort, convenience, and community for students. With 8 bedrooms, including 6 en-suite rooms and 1 shared bathroom, there's ample space for both privacy and socializing.

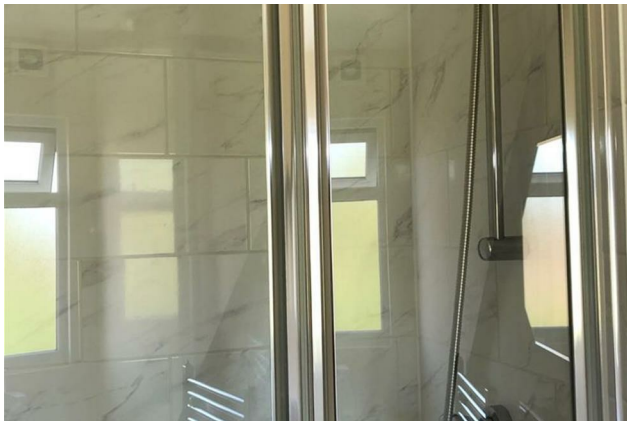
Each en-suite room provides students with their own private oasis, complete with a comfortable bed, study desk, storage space, and a modern bathroom for added convenience. The shared bathroom ensures that there's always an extra option available when needed.

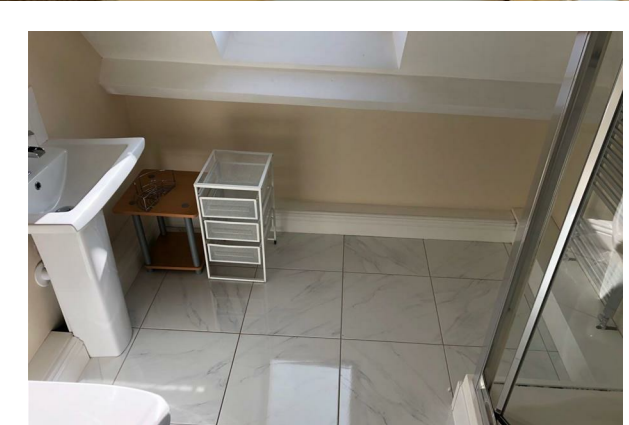
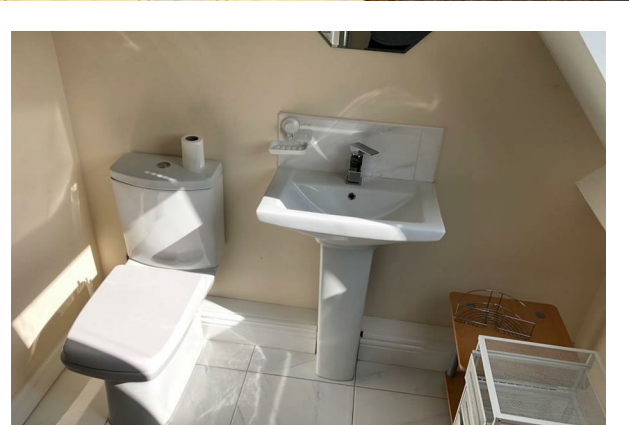
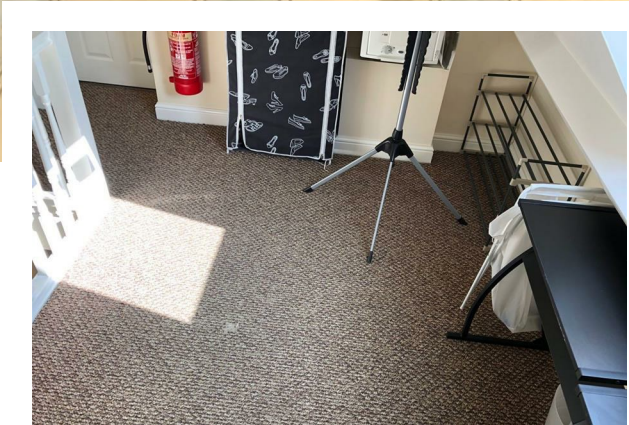
Located within walking distance to Warwick University, students can enjoy easy access to campus facilities and activities, cutting down on

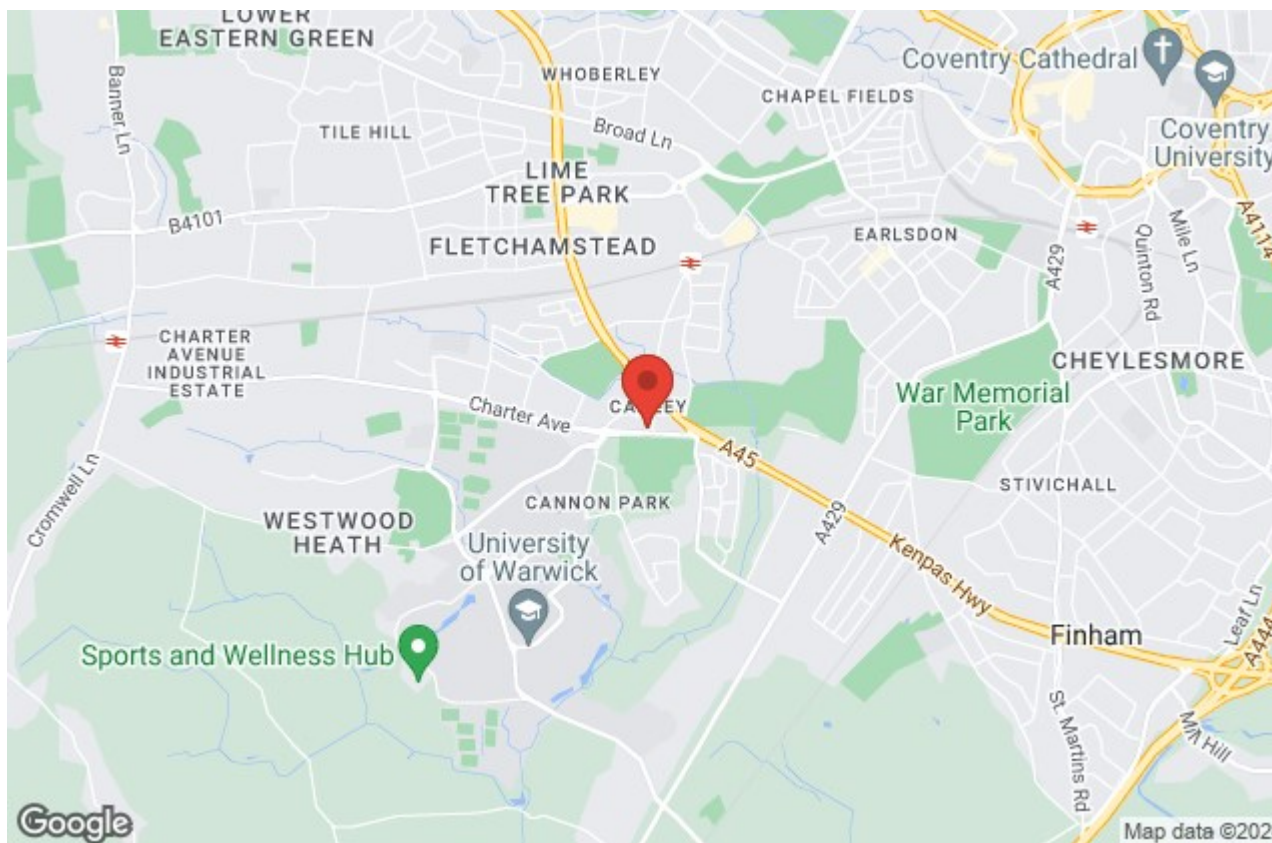
commute time and allowing for more flexibility in their schedules. Additionally, Cannon Park Shopping Park is just a stone's throw away, offering a variety of shops, restaurants, and amenities for all your daily needs.

Whether you're studying hard for exams or unwinding with friends, this 8-bedroom student property provides the perfect environment to thrive academically and socially during your time at Warwick University. Don't miss out on this opportunity to experience comfortable and convenient student living at its finest!

****WIFI ONLY INCLUDED****







Prominence Estates
5 Queen Isabels Avenue,
Cheylesmore,
Coventry,
CV3 5GE

02476 309 826
sales@prominenceestates.com
www.prominenceestates.com


PROMINENCE
ESTATES