



# Whiteley Meadows

North Whiteley

A taste of local life

[bovishomes.co.uk](http://bovishomes.co.uk)

**Bovis  
Homes** 





# Welcome to Whiteley Meadows

This impressive development is part of the exciting new community of North Whiteley in Hampshire, just ten miles from the vibrant coastal city of Portsmouth. North Whiteley will provide local schools, a nursery, community centres, playing fields and a wildlife corridor, as well as improved transport links to the nearby market town of Fareham and the M27.



At Whiteley Meadows, you can choose from a range of 1, 2, 3, 4 and 5 bedroom homes, all carefully designed to meet the needs of today's lifestyles. So if you're looking for a quality new home in a vibrant new Hampshire community, your search ends here.

## Getting around

North Whiteley is just off the A3051, that leads north to the A334 and south towards Whiteley, just 3.5 miles away and Fareham, 10 miles. It's only 3.6 miles to Junction 9 of the M27 for Cosham 13 miles and Portsmouth, 14 miles, or head west on the A27 for Southampton a journey of 9 miles. It's less than 1.5 miles to Botley Railway Station which runs trains to London Waterloo in under 2 hours. Services also run to Cosham, Portsmouth and Southampton. For air travel Southampton Airport is only 9 miles and Heathrow is 67 miles.

## A trip to the shops

You'll find a Co-op supermarket just 1.5 miles away in Botley and less than 4 miles away at Whiteley Shopping Centre there's a host of High Street brands including Boots, Fatface, M&S, WH Smith and Next. There's also a Tesco superstore and an M&S in Whiteley and a Waitrose in Park Gate. For more choice visit Fareham with its Shopping Centre, or take a city trip to Portsmouth where you can enjoy waterfront shopping at Gunwharf Quays that boasts 90 famous brands, or in the city centre visit Cascades Shopping Centre offering dozens of High Street names.

## Taking time out

Relax, eat and drink at the riverside Horse and Jockey pub at Curbridge, or stroll through ancient woodland at Curbridge Nature Reserve. There are local clubs for cricket, football and golf, as well as swimming facilities. For health, gym and fitness try Whiteley's Meadowside Leisure Centre and if you love the water there's a choice of yacht and boat clubs beside the River Hamble. You can see latest blockbusters at Cineworld in Whiteley, and there's live theatre in Fareham and Hedge End. Portsmouth is perfect for day out with iconic attractions such as the Emirates Spinnaker Tower, the Historic Dockyard and The Mary Rose, as well as its art galleries, museums and medieval buildings. If you're a footie fan you can watch Southampton Football Club play at St Mary's Stadium.

## Education

Whiteley Meadows will have its own nursery, primary and senior schools and there are also primary schools at Curbridge, Whiteley and Botley, catering for 5 to 10 year olds. Other senior schools in the area include Brookfield Community School and The Henry Cort Community College at Fareham and Fareham Academy, all catering for 11 to 16-year-olds. At Fareham College you can study A levels, apprenticeships and higher education.





# Whiteley Meadows

North Whiteley





# The Burridge

1 bedroom home

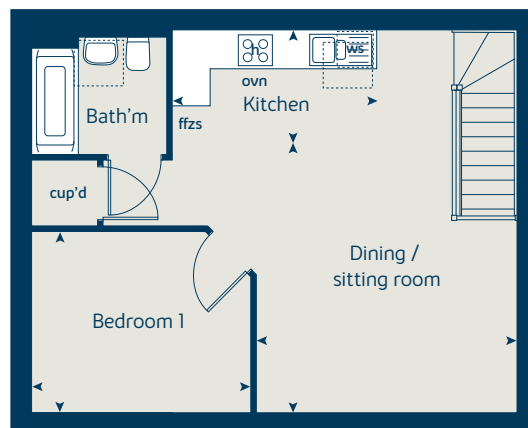
[bovishomes.co.uk](http://bovishomes.co.uk)

**Bovis  
Homes** 

# The Burridge

## 1 bedroom home

First floor



First floor	metres	feet / inches
Kitchen	3.25 x 1.80	10' 8" x 5' 11"
Dining / sitting room	4.29 x 4.13	14' 1" x 13' 7"
Bedroom 1	3.49 x 2.89	11' 5" x 9' 6"

### The Burridge | 1BFOG SNWHT |

This floorplan has been produced for illustrative purposes only. Room sizes shown are between arrow points as indicated on plan. The dimensions have tolerances of + or -50mm and should not be used other than for general guidance. If specific dimensions are required, enquiries should be made to the sales advisor.

ovn	oven	ffzs	fridge freezer space
h	hob	cup'd	cupboard
ws	washing machine space	◀ ▶	measuring points

Please refer to the sales advisor for specific plot details as the illustrations shown are computer generated impressions of how the property may look so are indicative only. External details or finishes may vary on individual plots and homes may be built in either detached or attached styles depending on the development layout. Exact specifications, window styles and whether a property is left or right handed may differ from plot to plot.

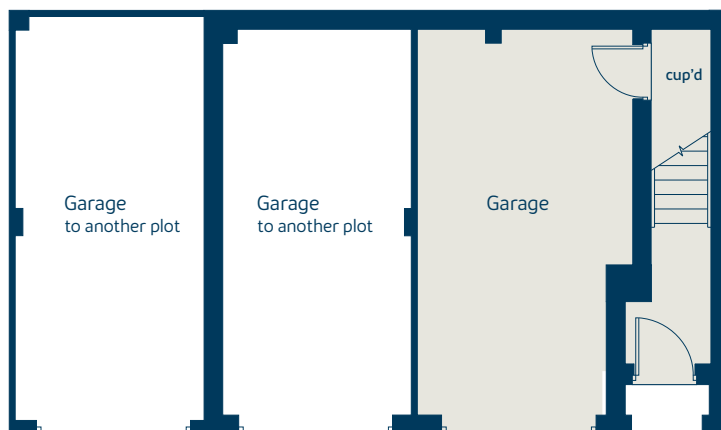
The floorplans shown are not to scale. Measurements are based on the original drawings. Slight variations may occur during construction.

Produced by the Bovis Homes Graphic Design Department.

When you have finished with this leaflet please recycle it.

SNWHT GDS1169 / 10.19

Ground floor







# The Elderberry

2 bedroom home

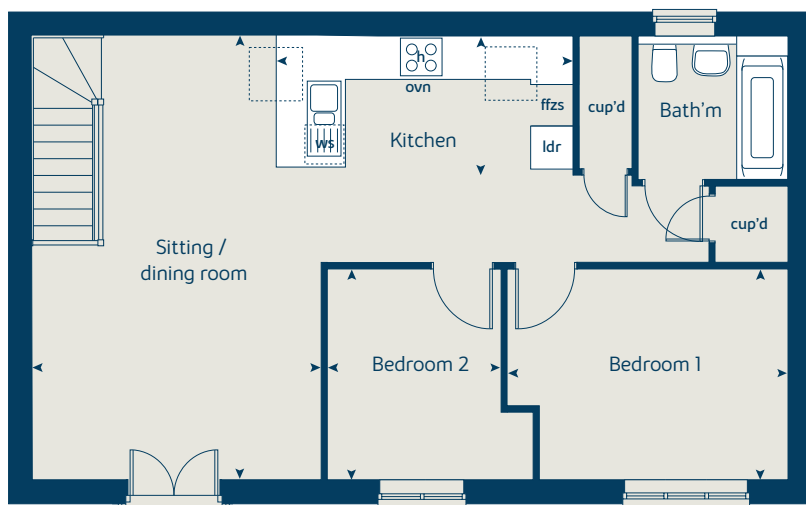
[bovishomes.co.uk](http://bovishomes.co.uk)

**Bovis  
Homes** 

# The Elderberry

## 2 bedroom home

### First floor



First floor	metres	feet / inches
Kitchen	4.24 x 1.91	13' 11" x 6' 3"
Sitting / dining room	6.09 x 4.13	20' 0" x 13' 7"
Bedroom 1	4.02 x 2.89	13' 2" x 9' 6"
Bedroom 2	2.89 x 2.48	9' 6" x 8' 2"

#### The Elderberry | 2BFOG (XF201) vt SNWHT |

This floorplan has been produced for illustrative purposes only. Room sizes shown are between arrow points as indicated on plan. The dimensions have tolerances of + or -50mm and should not be used other than for general guidance. If specific dimensions are required, enquiries should be made to the sales advisor.

ovn	oven	ldr	larder
h	hob	cup'd	cupboard
ws	washing machine space	◀ ▶	measuring points
ffzs	fridge freezer space		

Please refer to the sales advisor for specific plot details as the illustrations shown are computer generated impressions of how the property may look so are indicative only. External details or finishes may vary on individual plots and homes may be built in either detached or attached styles depending on the development layout. Exact specifications, window styles and whether a property is left or right handed may differ from plot to plot.

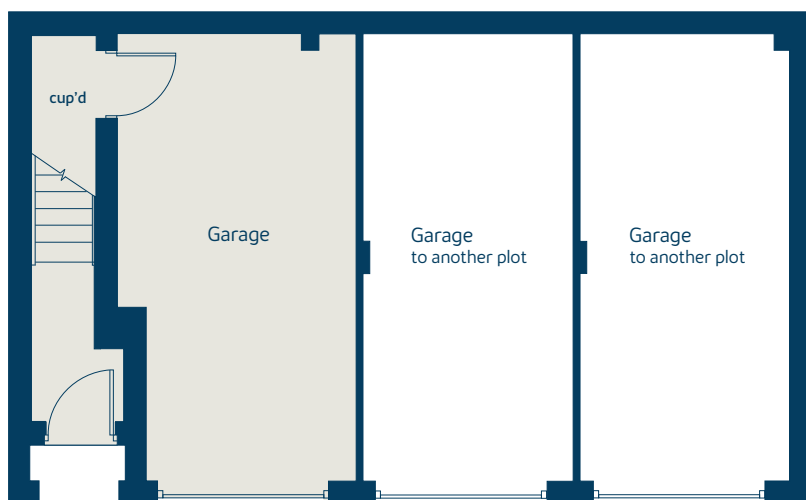
The floorplans shown are not to scale. Measurements are based on the original drawings. Slight variations may occur during construction.

Produced by the Bovis Homes Graphic Design Department.

When you have finished with this leaflet please recycle it.

SNWHT GDS1169 / 10.19

### Ground floor







# The Hawthorn

2 bedroom home

[bovishomes.co.uk](http://bovishomes.co.uk)

**Bovis  
Homes** 



# The Hawthorn

## 2 bedroom home

Ground floor	metres	feet / inches
Kitchen	3.73 x 2.92	12' 3" x 9' 7"
Sitting / dining area	4.07 x 4.05	13' 4" x 13' 3"

### First floor

Bedroom 1	4.07 x 2.69	13' 4" x 8' 10"
Bedroom 2	4.07 x 2.82	13' 4" x 9' 3"

### The Hawthorn | X203 P7 SNWHT |

This floorplan has been produced for illustrative purposes only. Room sizes shown are between arrow points as indicated on plan. The dimensions have tolerances of + or -50mm and should not be used other than for general guidance. If specific dimensions are required, enquiries should be made to the sales advisor.

\* Windows apply to selected plots only. Please see sales advisor for further details.

ovn	oven	ffzs	fridge freezer space
h	hob	cup'd	cupboard
ds	dishwasher space	◀ ▶	measuring points
ws	washing machine space		

Please refer to the sales advisor for specific plot details as the illustrations shown are computer generated impressions of how the property may look so are indicative only. External details or finishes may vary on individual plots and homes may be built in either detached or attached styles depending on the development layout. Exact specifications, window styles and whether a property is left or right handed may differ from plot to plot.

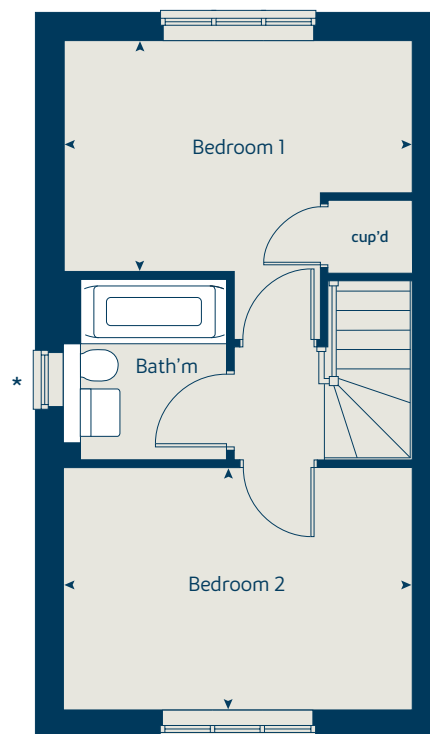
The floorplans shown are not to scale. Measurements are based on the original drawings. Slight variations may occur during construction.

Produced by the Bovis Homes Graphic Design Department.

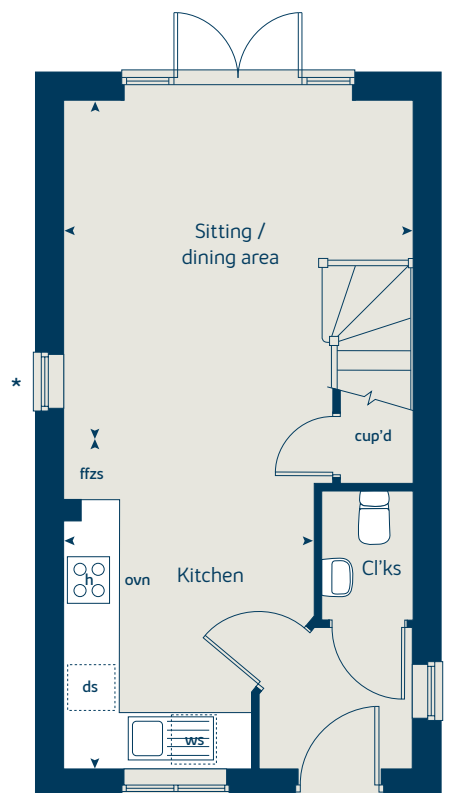
When you have finished with this leaflet please recycle it.

SNWHT GD51169 / 10.19

### First floor



### Ground floor





# The Holly

2 bedroom home

[bovishomes.co.uk](http://bovishomes.co.uk)

**Bovis  
Homes** 



# The Holly

## 2 bedroom home

Ground floor	metres	feet / inches
Kitchen / dining room	4.74 x 3.25	15' 6" x 10' 8"
Sitting room	3.72 x 3.66	12' 3" x 12' 0"

### First floor

Bedroom 1	3.59 x 3.20	11' 9" x 10' 6"
Bedroom 2	4.74 x 2.50	15' 6" x 8' 3"

### The Holly | X204 P6 vt SNWHT |

This floorplan has been produced for illustrative purposes only. Room sizes shown are between arrow points as indicated on plan. The dimensions have tolerances of + or -50mm and should not be used other than for general guidance. If specific dimensions are required, enquiries should be made to the sales advisor.

ovn	oven	ffzs	fridge freezer space
h	hob	cup'd	cupboard
ds	dishwasher space	◀ ▶	measuring points
ws	washing machine space		

Please refer to the sales advisor for specific plot details as the illustrations shown are computer generated impressions of how the property may look so are indicative only. External details or finishes may vary on individual plots and homes may be built in either detached or attached styles depending on the development layout. Exact specifications, window styles and whether a property is left or right handed may differ from plot to plot.

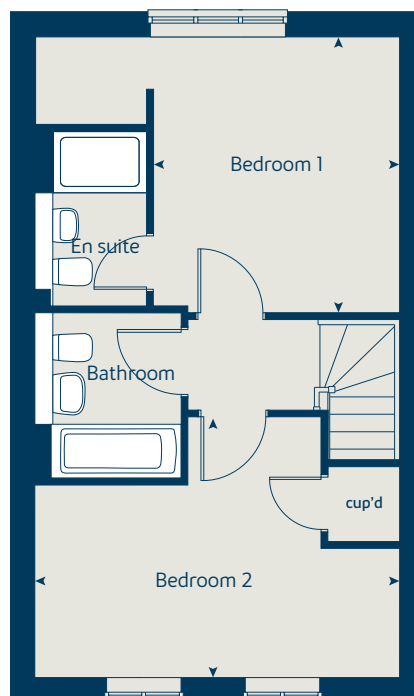
The floorplans shown are not to scale. Measurements are based on the original drawings. Slight variations may occur during construction.

Produced by the Bovis Homes Graphic Design Department.

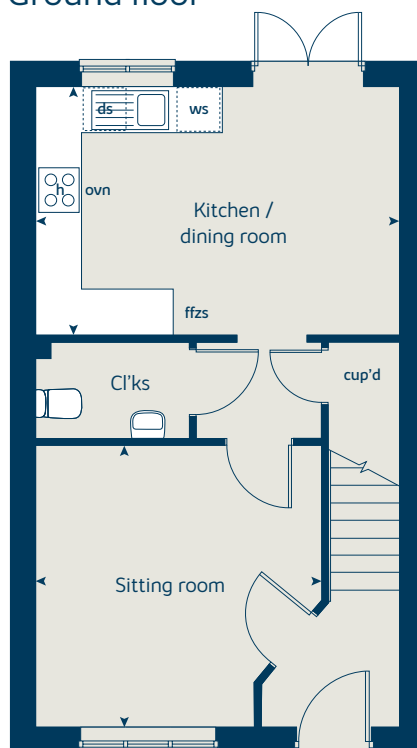
When you have finished with this leaflet please recycle it.

SNWHT GD51169 / 10.19

### First floor



### Ground floor





# The Hazel

3 bedroom home

[bovishomes.co.uk](http://bovishomes.co.uk)

**Bovis  
Homes** 



# The Hazel

3 bedroom home

Ground floor	metres	feet / inches
Kitchen / dining room	5.19 x 2.99	17' 0" x 9' 9"
Sitting room	4.17 x 3.66	13' 8" x 12' 0"

First floor	metres	feet / inches
Bedroom 1	3.49 x 2.97	11' 5" x 9' 9"
Bedroom 2	3.04 x 2.95	10' 0" x 9' 8"
Bedroom 3	3.48 x 2.15	11' 5" x 7' 1"

## The Hazel | X305 P5 SNWHT |

This floorplan has been produced for illustrative purposes only. Room sizes shown are between arrow points as indicated on plan. The dimensions have tolerances of + or -50mm and should not be used other than for general guidance. If specific dimensions are required, enquiries should be made to the sales advisor.

\* Windows apply to selected plots only. Please see sales advisor for further details.

ovn	oven	ffzs	fridge freezer space
h	hob	cup'd	cupboard
ds	dishwasher space	◀ ▶	measuring points
ws	washing machine space		

Please refer to the sales advisor for specific plot details as the illustrations shown are computer generated impressions of how the property may look so are indicative only. External details or finishes may vary on individual plots and homes may be built in either detached or attached styles depending on the development layout. Exact specifications, window styles and whether a property is left or right handed may differ from plot to plot.

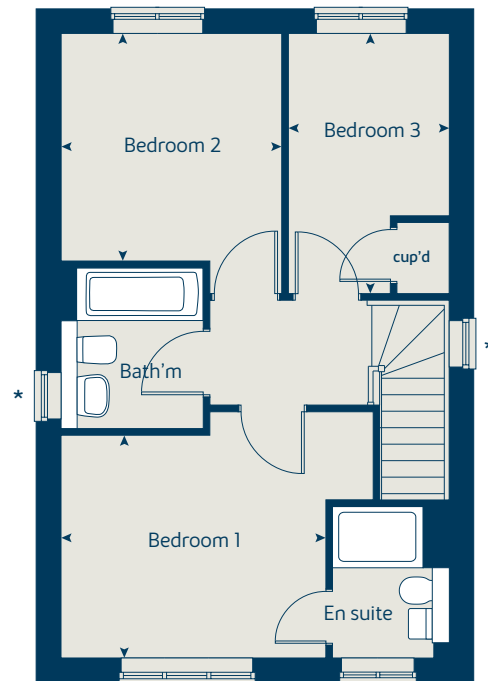
The floorplans shown are not to scale. Measurements are based on the original drawings. Slight variations may occur during construction.

Produced by the Bovis Homes Graphic Design Department.

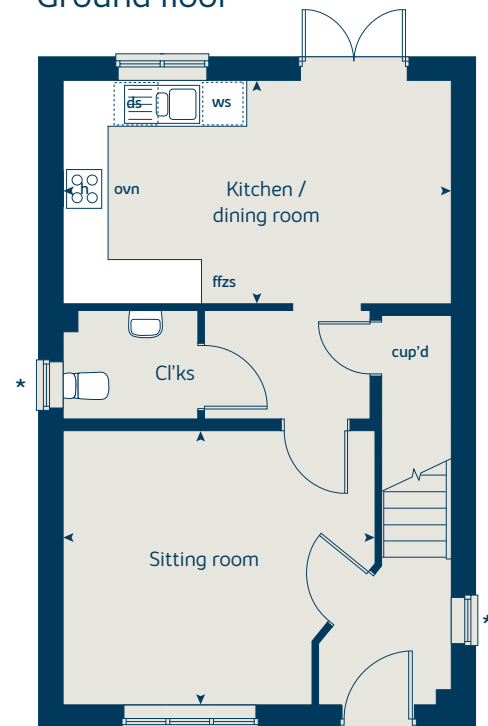
When you have finished with this leaflet please recycle it.

SNWHT GD51169 / 10.19

## First floor



## Ground floor





# The Elm

3 bedroom home

[bovishomes.co.uk](http://bovishomes.co.uk)

**Bovis  
Homes** 



# The Elm

## 3 bedroom home

Ground floor	metres	feet / inches
Kitchen	3.20 x 2.69	10' 6" x 10' 4"
Dining area	3.14 x 2.32	10' 4" x 7' 7"
Sitting room	5.52 x 3.32	18' 1" x 10' 11"

### First floor

Bedroom 1	3.33 x 2.93	10' 11" x 9' 8"
Bedroom 2	3.61 x 3.18	11' 10" x 10' 5"
Bedroom 3	3.61 x 2.25	11' 10" x 7' 5"

### The Elm | X307V SNWHT |

This floorplan has been produced for illustrative purposes only. Room sizes shown are between arrow points as indicated on plan. The dimensions have tolerances of + or -50mm and should not be used other than for general guidance. If specific dimensions are required, enquiries should be made to the sales advisor.

\* Windows apply to selected plots only. Please see sales advisor for further details.

- ① Alternative window layout applies to selected plots only. Please see sales advisor for further details.
- ② Alternative window layout applies to selected plots only. Please see sales advisor for further details.
- ③ Alternative window layout applies to selected plots only. Please see sales advisor for further details.

ovn	oven	ffzs	fridge freezer space
h	hob	cup'd	cupboard
ds	dishwasher space	◀ ▶	measuring points
ws	washing machine space		

Please refer to the sales advisor for specific plot details as the illustrations shown are computer generated impressions of how the property may look so are indicative only. External details or finishes may vary on individual plots and homes may be built in either detached or attached styles depending on the development layout. Exact specifications, window styles and whether a property is left or right handed may differ from plot to plot.

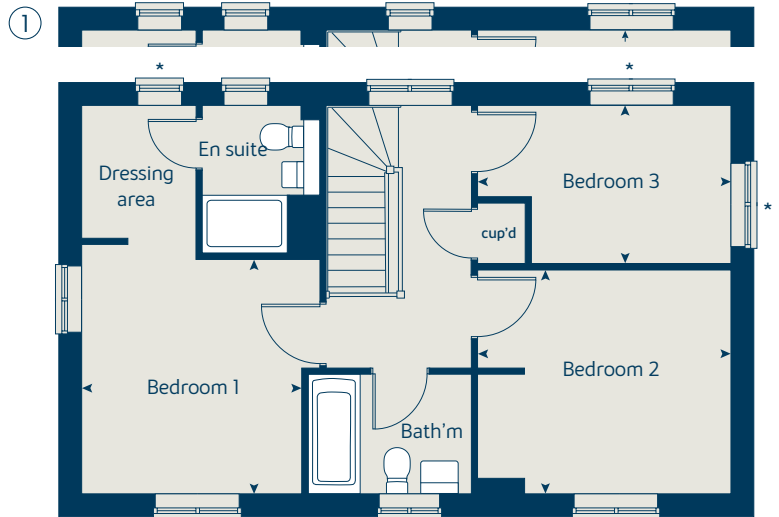
The floorplans shown are not to scale. Measurements are based on the original drawings. Slight variations may occur during construction.

Produced by the Bovis Homes Graphic Design Department.

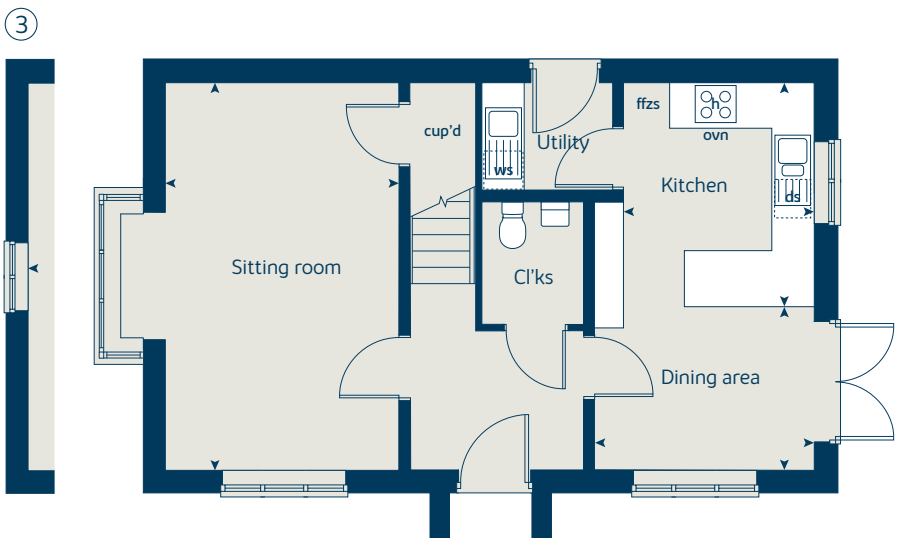
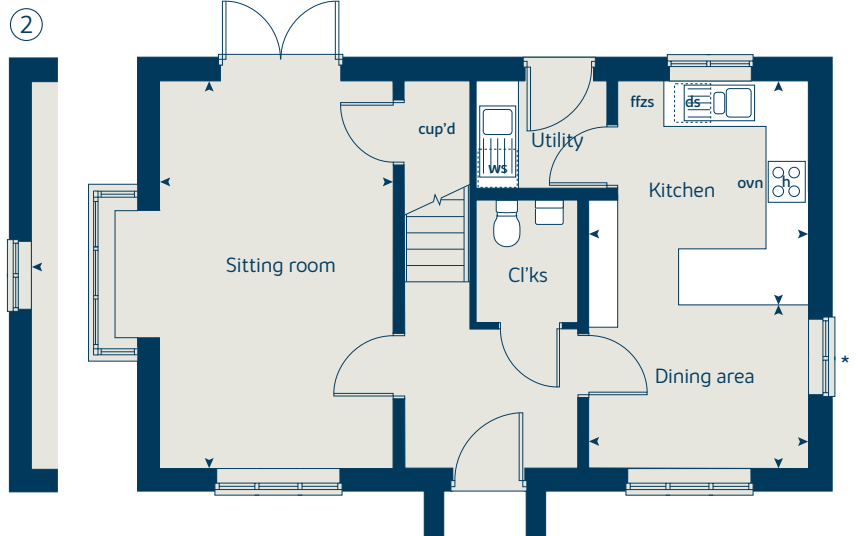
When you have finished with this leaflet please recycle it.

SNWHT GDS1169 / 10.19

### First floor



### Ground floor





# The Spruce

3 bedroom home

[bovishomes.co.uk](http://bovishomes.co.uk)

**Bovis  
Homes** 



# The Spruce

3 bedroom home

Ground floor	metres	feet / inches
Kitchen	3.23 x 2.69	10' 7" x 8' 9"
Dining area	3.14 x 2.30	10' 3" x 7' 6"
Sitting room	5.53 x 3.32	18' 1" x 10' 10"

## First floor

Bedroom 1	3.39 x 3.33	11' 1" x 10' 11"
Bedroom 2	3.61 x 3.18	11' 10" x 10' 5"
Bedroom 3	3.61 x 2.25	11' 10" x 7' 4"

## The Spruce | X307 P6 vt SNWHT |

This floorplan has been produced for illustrative purposes only. Room sizes shown are between arrow points as indicated on plan. The dimensions have tolerances of + or -50mm and should not be used other than for general guidance. If specific dimensions are required, enquiries should be made to the sales advisor.

\* Windows apply to selected plots only. Please see sales advisor for further details.

ovn	oven	ffzs	fridge freezer space
h	hob	cup'd	cupboard
ds	dishwasher space	< >	measuring points
ws	washing machine space		

Please refer to the sales advisor for specific plot details as the illustrations shown are computer generated impressions of how the property may look so are indicative only. External details or finishes may vary on individual plots and homes may be built in either detached or attached styles depending on the development layout. Exact specifications, window styles and whether a property is left or right handed may differ from plot to plot.

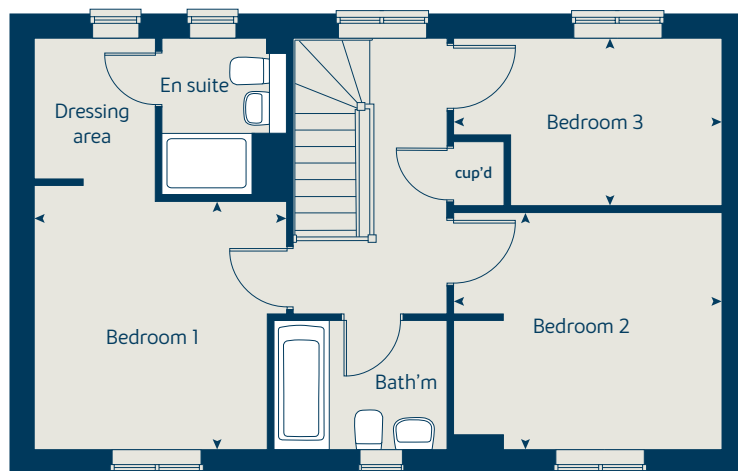
The floorplans shown are not to scale. Measurements are based on the original drawings. Slight variations may occur during construction.

Produced by the Bovis Homes Graphic Design Department.

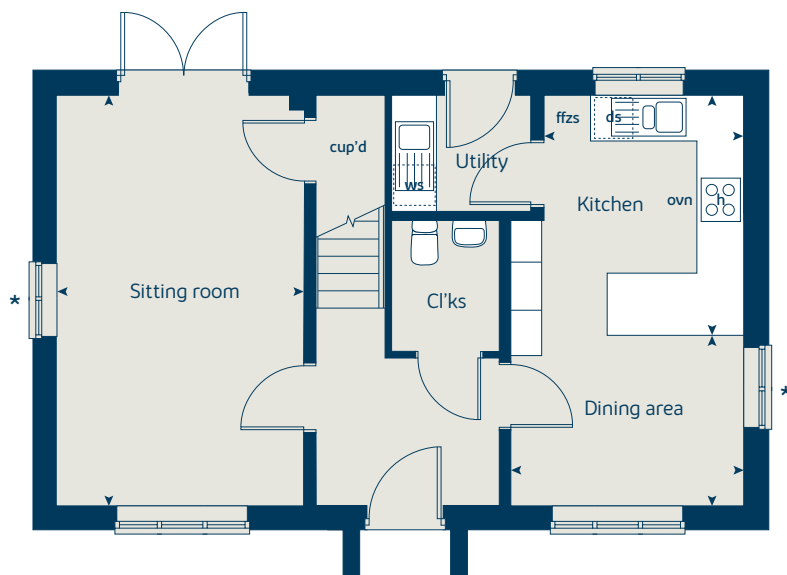
When you have finished with this leaflet please recycle it.

SNWHT GD51169 / 10.19

## First floor



## Ground floor





# The Cypress

3 bedroom home

[bovishomes.co.uk](http://bovishomes.co.uk)

**Bovis  
Homes** 



# The Cypress

## 3 bedroom home

Ground floor	metres	feet / inches
Kitchen / dining area	5.52 x 3.12	18' 1" x 10' 3"
Sitting room	4.33 x 3.40	14' 2" x 11' 1"

### First floor

Bedroom 1	4.09 x 3.27	13' 5" x 10' 9"
Bedroom 2	3.27 x 2.76	10' 9" x 9' 1"
Bedroom 3	2.55 x 2.16	8' 4" x 7' 1"

### The Cypress | X308 P7 (IF) SNWHT |

This floorplan has been produced for illustrative purposes only. Room sizes shown are between arrow points as indicated on plan. The dimensions have tolerances of + or -50mm and should not be used other than for general guidance. If specific dimensions are required, enquiries should be made to the sales advisor.

\* Window applies to plot 145 only. Please see sales advisor for further details.

ovn	oven	ffzs	fridge freezer space
h	hob	cup'd	cupboard
ds	dishwasher space	< >	measuring points
ws	washing machine space		

Please refer to the sales advisor for specific plot details as the illustrations shown are computer generated impressions of how the property may look so are indicative only. External details or finishes may vary on individual plots and homes may be built in either detached or attached styles depending on the development layout. Exact specifications, window styles and whether a property is left or right handed may differ from plot to plot.

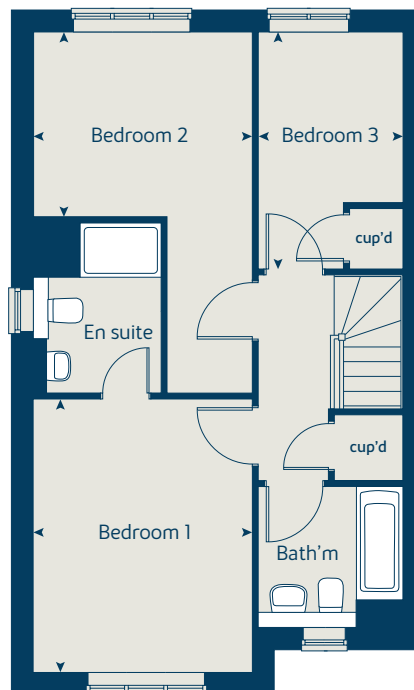
The floorplans shown are not to scale. Measurements are based on the original drawings. Slight variations may occur during construction.

Produced by the Bovis Homes Graphic Design Department.

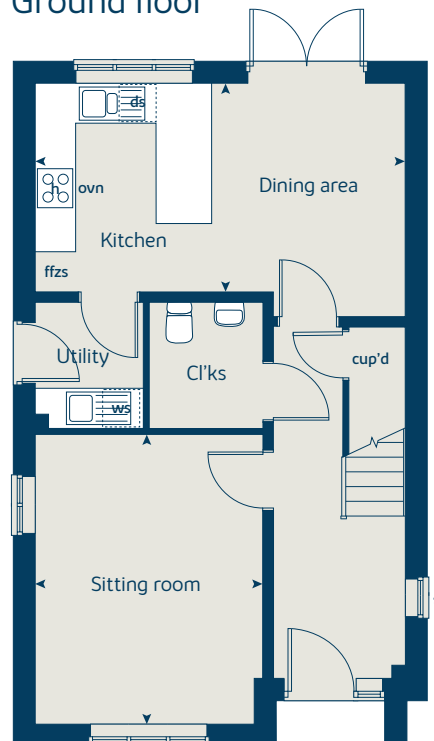
When you have finished with this leaflet please recycle it.

SNWHT GD51169 / 10.19

### First floor



### Ground floor





# The Beech

3 bedroom home

[bovishomes.co.uk](http://bovishomes.co.uk)





# The Beech

## 3 bedroom home

Ground floor	metres	feet / inches
Kitchen / dining room	4.74 x 2.93	15' 6" x 9' 7"
Sitting room	4.00 x 3.72	13' 1" x 12' 2"

### First floor

Bedroom 2	4.74 x 2.62	15' 6" x 8' 7"
Bedroom 3	3.39 x 2.49	11' 1" x 8' 2"

### Second floor

Bedroom 1	5.04 x 4.74	16' 6" x 15' 6"
-----------	-------------	-----------------

### The Beech | HT9A SNWHT |

This floorplan has been produced for illustrative purposes only. Room sizes shown are between arrow points as indicated on plan. The dimensions have tolerances of + or -50mm and should not be used other than for general guidance. If specific dimensions are required, enquiries should be made to the sales advisor.

\* Windows apply to selected plots only. Please see sales advisor for further details.

ovn	oven	ffzs	fridge freezer space
h	hob	cup'd	cupboard
ds	dishwasher space	◀ ▶	measuring points
ws	washing machine space		

Please refer to the sales advisor for specific plot details as the illustrations shown are computer generated impressions of how the property may look so are indicative only. External details or finishes may vary on individual plots and homes may be built in either detached or attached styles depending on the development layout. Exact specifications, window styles and whether a property is left or right handed may differ from plot to plot.

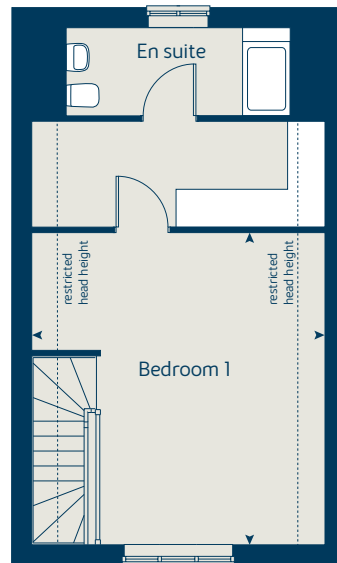
The floorplans shown are not to scale. Measurements are based on the original drawings. Slight variations may occur during construction.

Produced by the Bovis Homes Graphic Design Department.

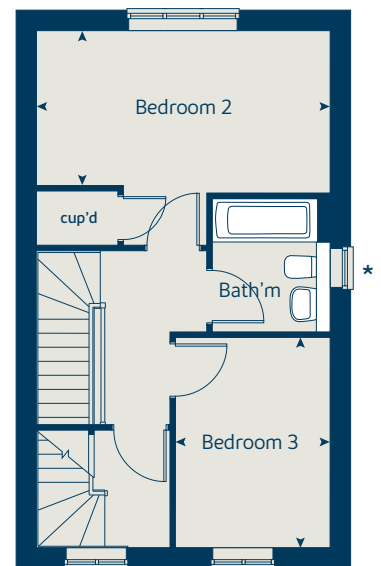
When you have finished with this leaflet please recycle it.

SNWHT GDS1169 / 10.19

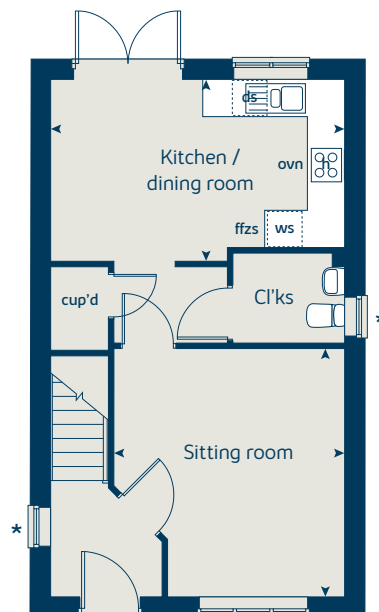
## Second floor



## First floor



## Ground floor





# The Chestnut

4 bedroom home

[bovishomes.co.uk](http://bovishomes.co.uk)

**Bovis  
Homes** 



# The Chestnut

## 4 bedroom home

Ground floor	metres	feet / inches
Kitchen	4.03 x 3.04	13' 3" x 10' 0"
Dining / family area	4.59 x 2.85	15' 1" x 9' 4"
Sitting room	4.98 x 3.40	16' 4" x 11' 2"
Study	3.40 x 1.81	11' 2" x 5' 11"

### First floor

Bedroom 1	3.24 x 3.03	10' 8" x 9' 11"
Bedroom 2	3.48 x 3.36	11' 5" x 11' 1"
Bedroom 3	3.25 x 2.35	10' 8" x 7' 7"
Bedroom 4	3.42 x 2.34	11' 3" x 7' 8"

### The Chestnut | X413 P5 SNWHT |

This floorplan has been produced for illustrative purposes only. Room sizes shown are between arrow points as indicated on plan. The dimensions have tolerances of + or -50mm and should not be used other than for general guidance. If specific dimensions are required, enquiries should be made to the sales advisor.

ovn	oven	ffzr	fridge freezer
h	hob	w	wardrobe
ds	dishwasher space	cup'd	cupboard
ws	washing machine space	< >	measuring points
ldr	larder		

Please refer to the sales advisor for specific plot details as the illustrations shown are computer generated impressions of how the property may look so are indicative only. External details or finishes may vary on individual plots and homes may be built in either detached or attached styles depending on the development layout. Exact specifications, window styles and whether a property is left or right handed may differ from plot to plot.

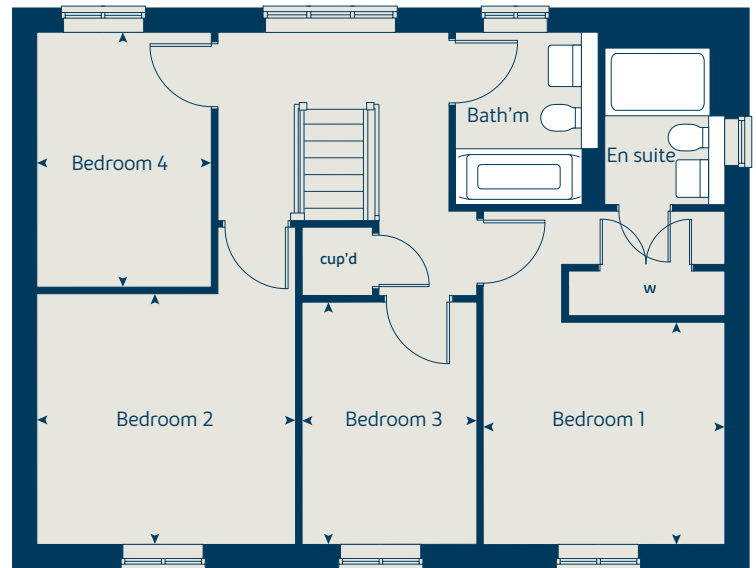
The floorplans shown are not to scale. Measurements are based on the original drawings. Slight variations may occur during construction.

Produced by the Bovis Homes Graphic Design Department.

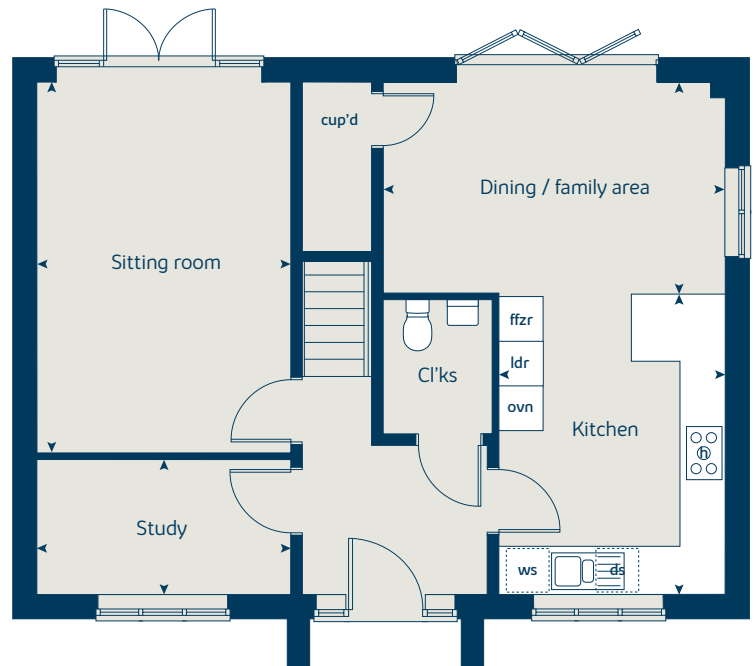
When you have finished with this leaflet please recycle it.

SNWHT GDS1169 / 10.19

### First floor



### Ground floor





# The Aspen

4 bedroom home

[bovishomes.co.uk](http://bovishomes.co.uk)

**Bovis  
Homes** 



# The Aspen

## 4 bedroom home

Ground floor	metres	feet / inches
Kitchen / dining area	7.78 x 3.37	25' 6" x 11' 1"
Sitting room	5.04 x 3.39	16' 6" x 11' 1"
Study	2.02 x 2.02	6' 8" x 6' 8"

### First floor

Bedroom 1	3.39 x 3.07	11' 1" x 10' 1"
Bedroom 2	3.11 x 3.00	10' 2" x 9' 10"
Bedroom 3	4.08 x 2.45	13' 4" x 8' 1"
Bedroom 4	3.61 x 2.45	11' 10" x 8' 1"

### The Aspen | X414 (IF) P6 vt SNWHT |

This floorplan has been produced for illustrative purposes only. Room sizes shown are between arrow points as indicated on plan. The dimensions have tolerances of + or -50mm and should not be used other than for general guidance. If specific dimensions are required, enquiries should be made to the sales advisor.

- ① Alternative first floor window layout applies to selected plots only. Please see sales advisor for further details.
- ② Alternative bay window layout applies to selected plots only. Please see sales advisor for further details.

ovn	oven	ldr	larder
h	hob	w	wardrobe
ds	dishwasher space	cup'd	cupboard
ws	washing machine space	◀ ▶	measuring points
ffzr	fridge freezer		

Please refer to the sales advisor for specific plot details as the illustrations shown are computer generated impressions of how the property may look so are indicative only. External details or finishes may vary on individual plots and homes may be built in either detached or attached styles depending on the development layout. Exact specifications, window styles and whether a property is left or right handed may differ from plot to plot.

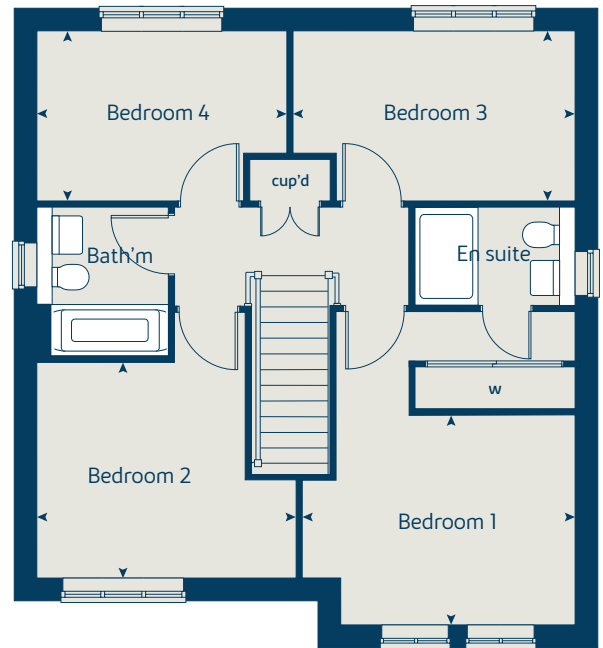
The floorplans shown are not to scale. Measurements are based on the original drawings. Slight variations may occur during construction.

Produced by the Bovis Homes Graphic Design Department.

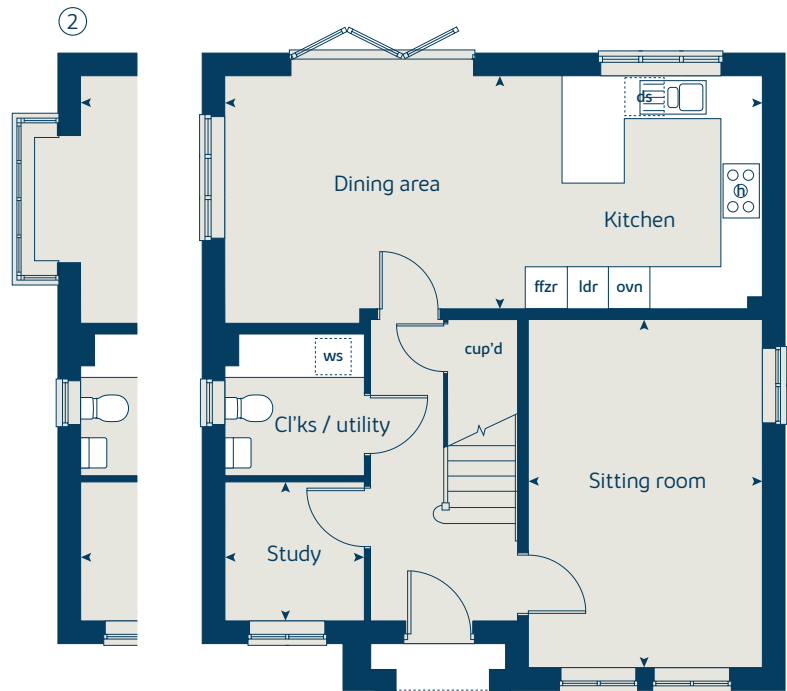
When you have finished with this leaflet please recycle it.

SNWHT GDS1169 / 10.19

### First floor



### Ground floor



②



# The Birch

5 bedroom home

[bovishomes.co.uk](http://bovishomes.co.uk)

**Bovis  
Homes** 



# The Birch

5 bedroom home

Ground floor	metres	feet/inches
Kitchen	4.54 x 4.16	14' 11" x 13' 8"
Family / dining area	4.96 x 3.51	17' 5" x 11' 6"
Sitting room	4.17 x 3.61	13' 8" x 11' 10"
Study / dining room	3.42 x 3.00	11' 2" x 9' 10"

First floor	metres	feet/inches
Bedroom 1	3.61 x 3.54	11' 10" x 11' 7"
Bedroom 2	3.92 x 3.23	12' 10" x 10' 7"
Bedroom 3	3.06 x 2.85	10' 1" x 9' 4"
Bedroom 4	2.98 x 2.83	9' 9" x 9' 3"
Bedroom 5	3.04 x 2.83	9' 11" x 9' 3"

## The Birch | X518 P5 (IF) vt SNWHT |

This floorplan has been produced for illustrative purposes only. Room sizes shown are between arrow points as indicated on plan. The dimensions have tolerances of + or -50mm and should not be used other than for general guidance. If specific dimensions are required, enquiries should be made to the sales advisor.

ovn	oven	ldr	larder
h	hob	cyl	hot water cylinder
dw	dishwasher	cup'd	cupboard
ws	washing machine space	< >	measuring points
ffzr	fridge freezer		

Please refer to the sales advisor for specific plot details as the illustrations shown are computer generated impressions of how the property may look so are indicative only. External details or finishes may vary on individual plots and homes may be built in either detached or attached styles depending on the development layout. Exact specifications, window styles and whether a property is left or right handed may differ from plot to plot.

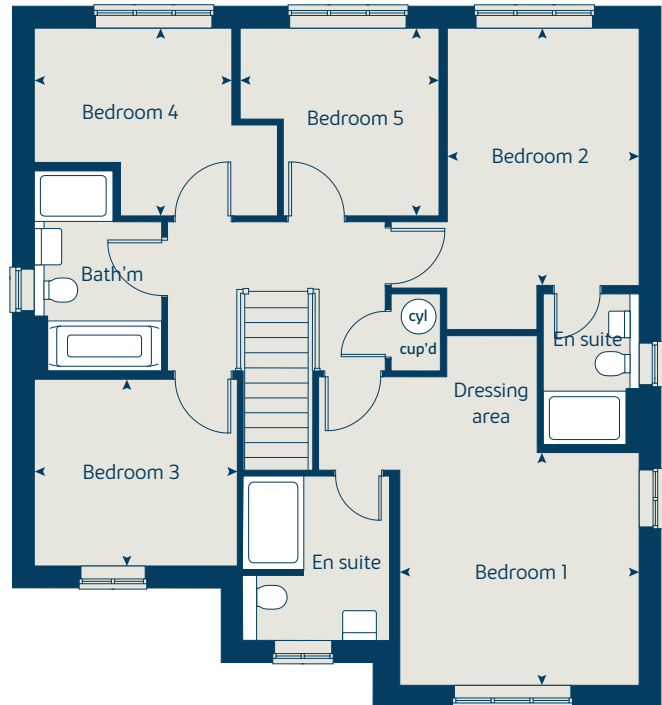
The floorplans shown are not to scale. Measurements are based on the original drawings. Slight variations may occur during construction.

Produced by the Bovis Homes Graphic Design Department.

When you have finished with this leaflet please recycle it.

SNWHT GD51169 / 10.19

## First floor



## Ground floor





# The Birch II

5 bedroom home

[bovishomes.co.uk](http://bovishomes.co.uk)

**Bovis  
Homes** 



# The Birch II

## 5 bedroom home

Ground floor	metres	feet / inches
Kitchen	4.54 x 4.16	14' 11" x 13' 8"
Family / dining area	5.23 x 3.51	17' 5" x 11' 6"
Sitting room	4.17 x 3.61	13' 8" x 11' 10"
Study / dining room	3.42 x 3.00	11' 2" x 9' 10"

First floor	metres	feet / inches
Bedroom 1	3.61 x 3.54	11' 10" x 11' 7"
Bedroom 2	3.92 x 3.23	12' 10" x 10' 7"
Bedroom 3	3.06 x 2.85	10' 1" x 9' 4"
Bedroom 4	2.98 x 2.83	9' 9" x 9' 3"
Bedroom 5	3.04 x 2.83	9' 11" x 9' 3"

### The Birch II | X518V SNWHT |

This floorplan has been produced for illustrative purposes only. Room sizes shown are between arrow points as indicated on plan. The dimensions have tolerances of + or -50mm and should not be used other than for general guidance. If specific dimensions are required, enquiries should be made to the sales advisor.

ovn	oven	ldr	larder
h	hob	cyl	hot water cylinder
dw	dishwasher	w	wardrobe
ws	washing machine space	cup'd	cupboard
ffzr	fridge freezer	◀ ▶	measuring points

Please refer to the sales advisor for specific plot details as the illustrations shown are computer generated impressions of how the property may look so are indicative only. External details or finishes may vary on individual plots and homes may be built in either detached or attached styles depending on the development layout. Exact specifications, window styles and whether a property is left or right handed may differ from plot to plot.

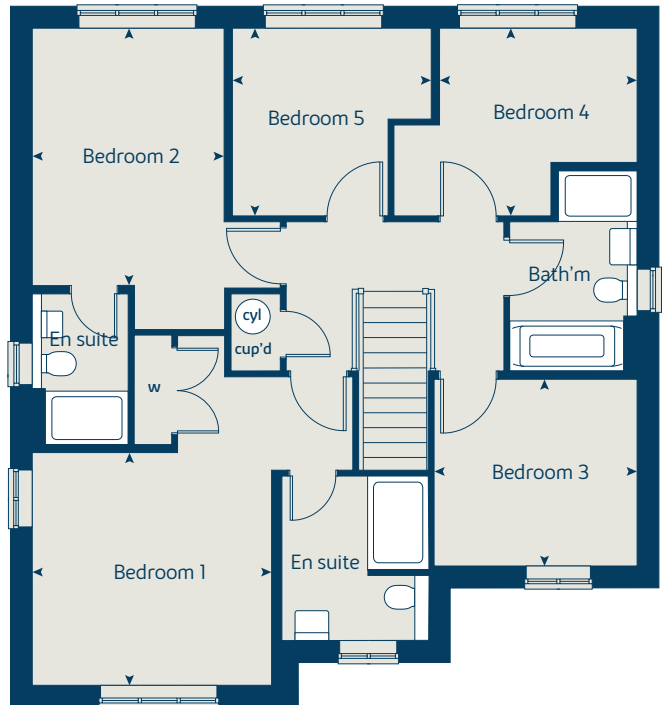
The floorplans shown are not to scale. Measurements are based on the original drawings. Slight variations may occur during construction.

Produced by the Bovis Homes Graphic Design Department.

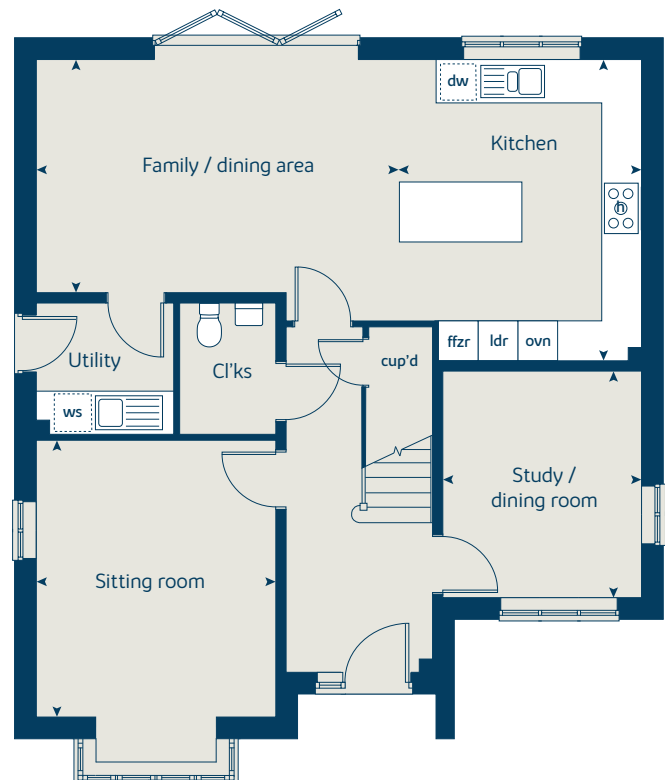
When you have finished with this leaflet please recycle it.

SNWHT GDS1169 / 10.19

### First floor



### Ground floor



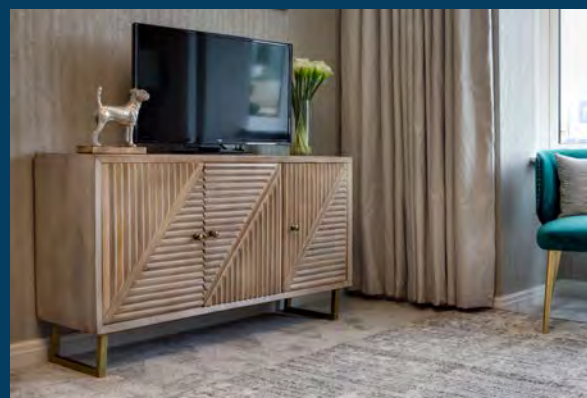
## So much choice...

Part of the excitement of buying a new home is the thrill of being the first person to live in the property and having a brand new contemporary kitchen and modern bathroom. Our premium brand partners ensure that all of our fixtures and fittings comply with the latest Government building regulations and only branded appliances are installed in your new home.

Once you know what specification comes included, you'll have a choice from our specially selected tiles for your kitchen and bathrooms, as well as kitchen worktops and cupboard doors. You can then use the Bovis Homes **Select** brochure to add the finishing touches to your home to make it extra special for you!

From personalising your bathrooms with stunning ceramics, or adding smooth sliding wardrobes to your master bedroom, there are a wide range of additional options and upgrades available.

The availability of items is subject to the stage of build, and can vary by development and house type. Our sales consultants will be happy to provide guidance.



## Whiteley Meadows

North Whiteley



When you have finished with this leaflet please recycle it.

The specification shown in this leaflet is correct at the time of going to press. Bovis Homes is continually reviewing and updating the specification on all housetypes and therefore reserves the right to change specification details. Photographs depict a typical Bovis Homes interior and may include optional upgrades. For full details regarding current specification and finishes, for the plots you are interested in, please refer to our sales consultant.

Produced by the Bovis Homes Graphic Design Department.

SNWHT GDS1169 / 10.19



Specification

[bovishomes.co.uk](http://bovishomes.co.uk)





# Whiteley Meadows

## North Whiteley

Use this guide to see what features are included in your new home. Your sales consultant will be happy to discuss the **Select** range of extras available.



### Kitchen

	1 bedroom The Burridge	2 bedroom The Elderberry The Holly The Hawthorn	3 bedroom The Hazel The Cypress The Elm The Spruce The Beech	4 bedroom The Chestnut The Aspen	5 bedroom The Birch The Birch II
Choice of Standard fitted kitchen (doors and worktops)*	■	■ ■ ■	■ ■ ■ ■ ■	■ ■	
Choice of Premium fitted kitchen (doors and worktops)*					■ ■
Stainless steel sink and drainer (single bowl) with chrome mixer tap**	■	■ ■ ■			
Stainless steel sink and drainer (single and a half bowl) with chrome mixer tap			■ ■ ■ ■ ■	■ ■	■ ■
Stainless steel sink and drainer (single bowl) with chrome mixer tap in utility				■	■ ■
Hotpoint hob (60cm) with built-in single oven (high level or under), with glass splashback and curved glass chimney hood	■	■ ■ ■	■ ■ ■ ■ ■		
Hotpoint hob (75cm) with built-in double oven (high level or under), with glass splashback and curved glass chimney hood				■ ■	
Bosch (75cm) hob with built-in double oven at high level, with glass splashback and stainless steel pyramid chimney hood					■ ■
Pre-wired for under unit lighting option	■	■ ■ ■	■ ■ ■ ■ ■		
LED under unit flexible strip lighting				■ ■	■ ■
Downlighting				■ ■	■ ■
Fridge / freezer space	■	■ ■ ■	■ ■ ■ ■ ■		
Integrated (Indesit) 50 / 50 fridge freezer				■ ■	■ ■
Space for integrated dishwasher with plumbing and electrics (with removable base unit)		■ ■	■ ■ ■ ■ ■	■ ■	
Integrated (Indesit) dishwasher					■ ■
Space for washing machine with plumbing and electrics in utility			■ ■ ■ ■ ■	■ ■	
Space for washing machine with plumbing and electrics in kitchen	■	■ ■ ■	■ ■ ■ ■ ■	■ ■	

### Bathrooms and en suite(s)

Ideal Standard contemporary white sanitary ware suite	■	■ ■ ■	■ ■ ■ ■ ■		
Ideal Standard contemporary white Concept Air sanitary ware suite with Aqua blade WC technology				■ ■	■ ■
Ideal Standard close coupled WC to cloakroom		■ ■	■ ■ ■ ■ ■		
Ideal Standard low profile shower tray with glass enclosure		■	■ ■ ■ ■ ■	■ ■	■ ■
Handheld hair wash attachment		■ ■	■ ■ ■ ■ ■	■ ■	■ ■
Shower over the bath	■	■			
Choice of Standard Porcelanosa wall tiling (splashback, half-height over bath, and full-height to shower cubicle)*	■	■ ■ ■	■ ■ ■ ■ ■	■ ■	
Choice of Premium Porcelanosa wall tiling (half-height to walls with fitted sanitary ware, half-height over bath, and full-height to shower cubicle)*					■ ■
Shaver socket / toothbrush charger to bathroom and main en suite	■	■ ■ ■	■ ■ ■ ■ ■	■ ■	■ ■
Angled spotlight fitting in chrome to bathroom and en suite(s)	■	■ ■ ■	■ ■ ■ ■ ■	■ ■	■ ■
Radiator or white towel warmer in bathroom / en suite (where applicable)	■	■ ■ ■	■ ■ ■ ■ ■		
Chrome towel warmer in bathroom and en suite(s)				■ ■	■ ■

### Bedrooms

	1 bedroom The Burridge	2 bedroom The Elderberry The Holly The Hawthorn	3 bedroom The Hazel The Cypress The Elm The Spruce The Beech	4 bedroom The Chestnut The Aspen	5 bedroom The Birch The Birch II
Built-in wardrobe(s) to bedroom 1 (with shelf and rail)				■ ■	■ ■

### Doors and Windows

Front door with multi-point security locking system and security chain	■	■ ■ ■	■ ■ ■ ■ ■	■ ■	■ ■
PVCu double glazing to windows	■	■ ■ ■	■ ■ ■ ■ ■	■ ■	■ ■
Double glazed PVCu French doors		■ ■ ■	■ ■ ■ ■ ■		
Double glazed bi-fold doors				■ ■	■ ■
White painted four-panel internal doors with chrome lever handles	■	■ ■ ■	■ ■ ■ ■ ■	■ ■	■ ■
Paving outside French / bi-fold door and path to garage personnel door (where applicable)		■ ■	■ ■ ■ ■ ■	■ ■	■ ■

### General

White painted walls and smooth white ceilings	■	■ ■ ■	■ ■ ■ ■ ■	■ ■	■ ■
Combined usb / double sockets in kitchen and bedroom 1	■	■ ■ ■	■ ■ ■ ■ ■	■ ■	■ ■
Multi-media point in sitting room	■	■ ■ ■	■ ■ ■ ■ ■	■ ■	■ ■
TV point to bedroom 1 and family room (where applicable)	■	■ ■ ■	■ ■ ■ ■ ■	■ ■	■ ■
Master telephone socket (plus to study where shown)	■	■ ■ ■	■ ■ ■ ■ ■	■ ■	■ ■
Gas central heating with wall mounted combi-boiler, programme selector and room thermostat(s)	■	■ ■ ■	■ ■ ■ ■ ■	■ ■	
Gas central heating with wall mounted boiler and separate hot water cylinder, programme selector and room thermostat(s)					■ ■
Thermostatic valves to all radiators (with the exception of rooms with separate thermostat control)	■	■ ■ ■	■ ■ ■ ■ ■	■ ■	■ ■
Wiring for external light to front porch, and rear door (where applicable)	■	■ ■ ■	■ ■ ■ ■ ■	■ ■	■ ■
Mains wired smoke detectors with battery back-up	■	■ ■ ■	■ ■ ■ ■ ■	■ ■	■ ■
Power and lighting to 'on plot' garage (where applicable)	■	■	■ ■ ■ ■ ■	■ ■	■ ■
Enclosed fenced rear garden, and garden gate (where applicable)		■ ■	■ ■ ■ ■ ■	■ ■	■ ■
External tap to rear garden		■ ■	■ ■ ■ ■ ■	■ ■	■ ■
Landscaped front gardens		■ ■	■ ■ ■ ■ ■	■ ■	■ ■
NHBC Buildmark cover	■	■ ■ ■	■ ■ ■ ■ ■	■ ■	■ ■
First two years' customer service support from Bovis Homes	■	■ ■ ■	■ ■ ■ ■ ■	■ ■	■ ■

■ Fitted as standard - included in the property

\* Subject to stage of construction

\*\* Plot specific variations can apply, please see sales consultant for further details

# Whiteley Meadows

North Whiteley,  
Hampshire SO30 2HB

## From Southampton

- Take the A3024 out of the city, crossing the River Itchen
- Continue for 4 miles to Kanes Hill Roundabout
- Take the 2nd exit onto A334 Charles Watts Way
- Continue on the A334 for approximately 3.5 miles
- At the top of Mill Hill, turn right onto the A3051
- Continue for just over a mile
- Whiteley Meadows can be found on your left hand side

## From M27 East

- Leave the M27 at Junction 9
- Take the A27 to Fareham West/Whiteley
- At Parkway South Roundabout take the 1st exit onto Rookery Avenue
- At next roundabout take the 2nd exit to stay on Rookery Avenue
- Turn right onto Yew Tree Drive and continue for half a mile
- At the roundabout take the 3rd exit onto A3051 Botley Road
- Continue on the A3051 for nearly 2 miles
- Whiteley Meadows will be found on your right hand side



When you have finished with this leaflet please recycle it.

Cover photograph of River Hamble. Not view from the development. The streetscene shown above has been produced for illustrative purposes only, please check the details of the homes you are interested in with the sales advisor.

Bovis Homes Limited, Southern Counties region  
Central 40, Lime Tree Way, Chineham Park, Basingstoke RG24 8GU Telephone: 01474 876 200

Produced by the Bovis Homes Graphic Design Department.

SNWHT GD51169 / 10.19

**Bovis  
Homes** 