



1 BEDROOM APARTMENTS

Tillermans is part of

GREENFORD
QUAY

BY GREYSTAR

SITE OVERVIEW



Tillermans is the exciting launch release of Greenford Quay's new rental homes, with the first phase ready to move into in October 2019. Tillermans is home to 379 one, two and three bedroom apartments, with vibrant ground floor spaces available for commercial and retail use.





Computer Generated Image of Tillermans viewed from the Grand Union Canal



TILLERMANS FACILITIES

With all the facilities you could need, Tillermans is the perfect place to spend your days.

Tillermans is located within easy reach of Greenford Station and the Central Line Underground to Central London.

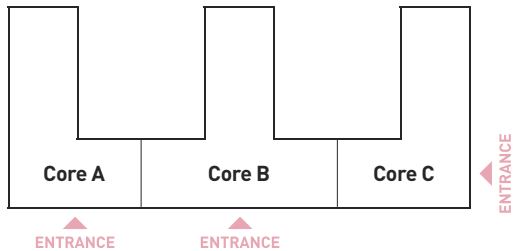
Tillermans Lobby offers a 24/7 concierge service, with an on-site team available to collect post and parcels, organise deliveries and assist with any residential requirements (repairs, waste management and more).

Car parking, Cycle store and Cycle Workshop are available, together with a Dog Wash room to groom your pet after a long walk down the canal.

The 14th Floor boosts the perfect combination of on-site amenities, including a 24/7 gym, a cinema, a play room for families, a games room and bar area, a dining room and a roof terrace overlooking west London.

14 Floor		
13		
12		
11		
10		
9		
8		
7		
	6	
	5	
	4	
	3	
	2	
	1	
Ground Floor		
Basement Floor		
Core A	Core B	Core C

= Residential floors



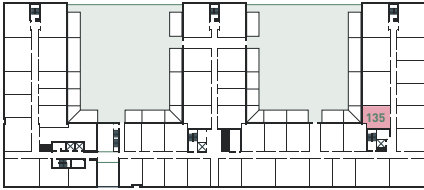


1 BEDROOM APARTMENTS

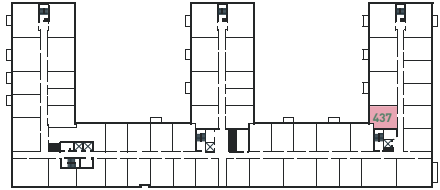
TYPE: STU-C1

FLOOR LOCATOR

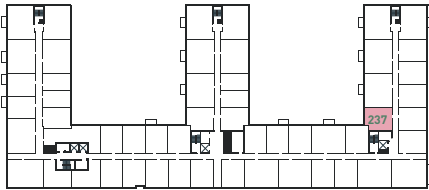
1st Floor



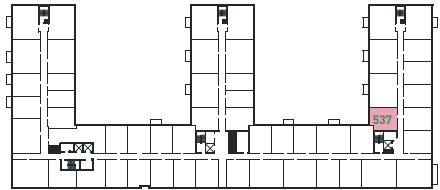
4th Floor



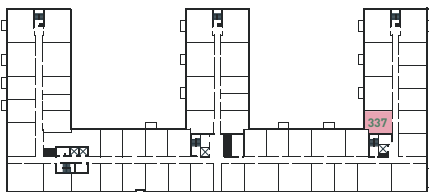
2nd Floor



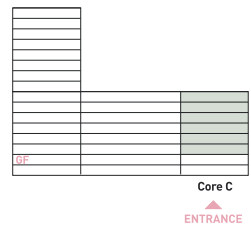
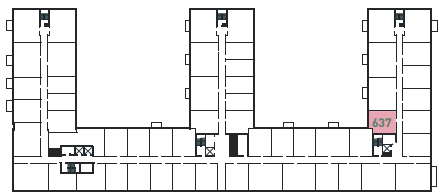
5th Floor



3rd Floor

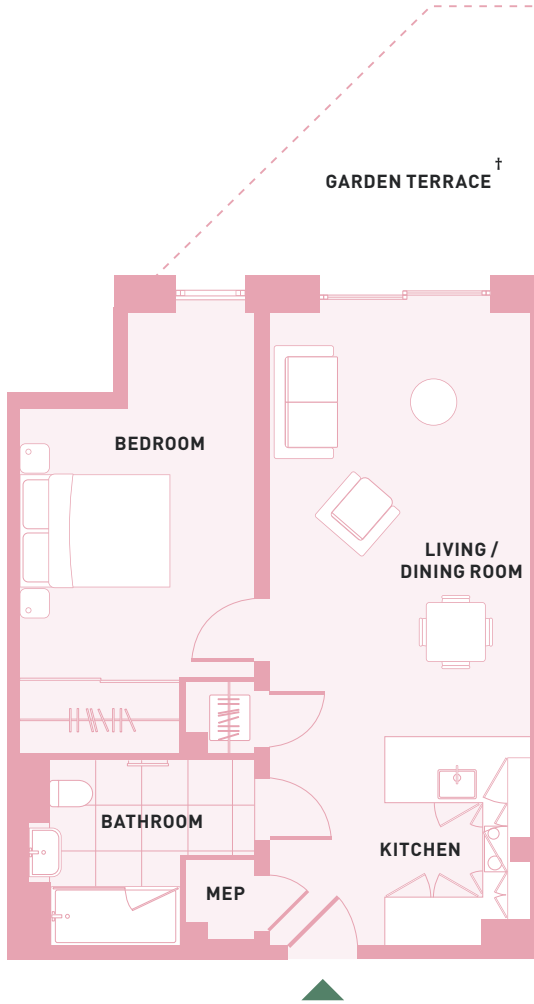


6th Floor



1 BEDROOM APARTMENT

TYPE: STU-C1



NET INTERNAL AREA

582 sqft / 54 sqm

These plans are to be used as a guide only to the apartment types available. Plans are not to scale. Units will vary based on location.

† Apartments with Garden Terrace:
135 (11.3sqm).



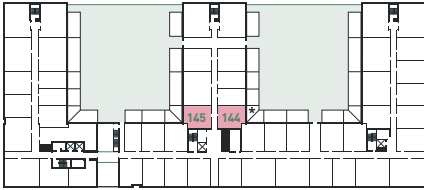


1 BEDROOM APARTMENTS

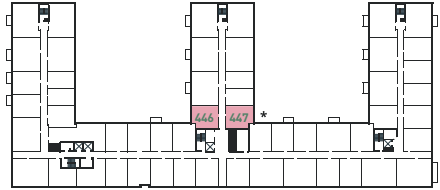
TYPE: STU-C2

FLOOR LOCATOR

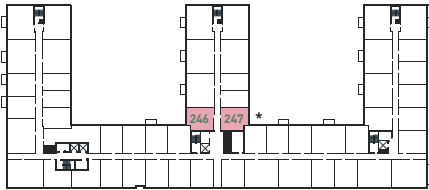
1st Floor



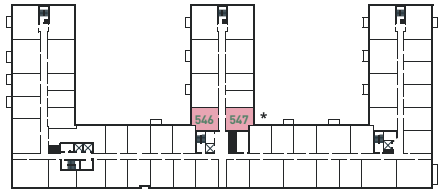
4th Floor



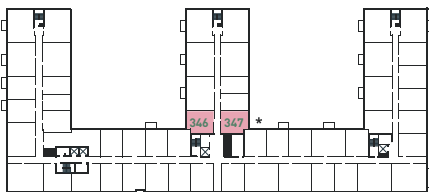
2nd Floor



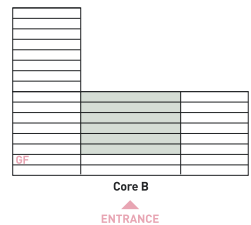
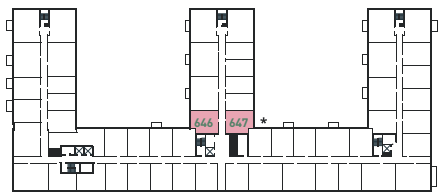
5th Floor



3rd Floor

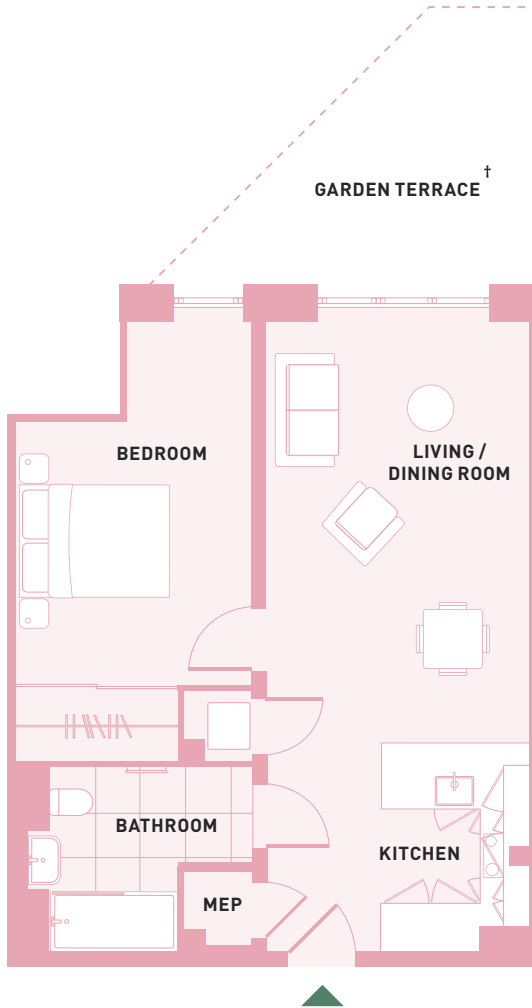


6th Floor



1 BEDROOM APARTMENT

TYPE: STU-C2



NET INTERNAL AREA

582 sqft / 54 sqm

These plans are to be used as a guide only to the apartment types available. Plans are not to scale. Units will vary based on location.

† Apartments with Garden Terrace:
144 (11.5sqm), 145 (11.5sqm).

* Plan is handed



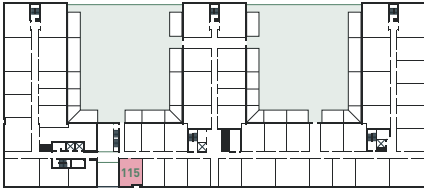


1 BEDROOM APARTMENTS

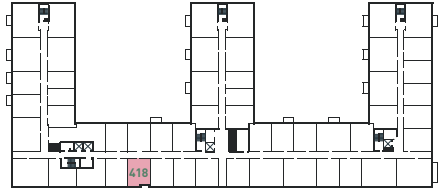
TYPE: 1B-A1

FLOOR LOCATOR

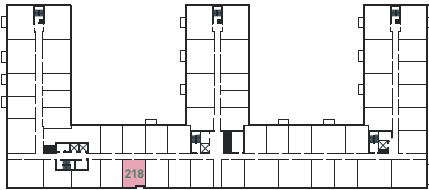
1st Floor



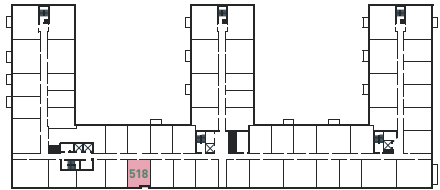
4th Floor



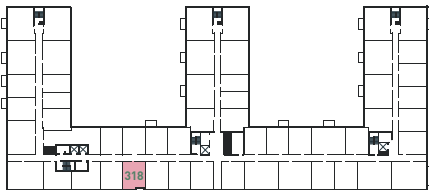
2nd Floor



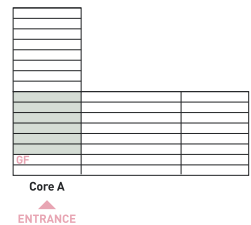
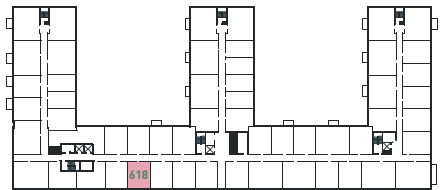
5th Floor



3rd Floor

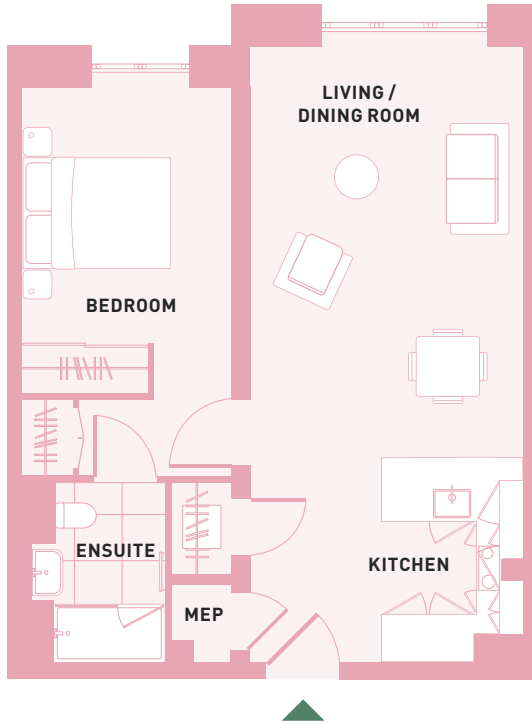


6th Floor



1 BEDROOM APARTMENT

TYPE: 1B-A1



NET INTERNAL AREA

585 sqft / 54 sqm

These plans are to be used as a guide only to the apartment types available. Plans are not to scale. Units will vary based on location.



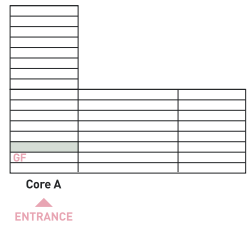
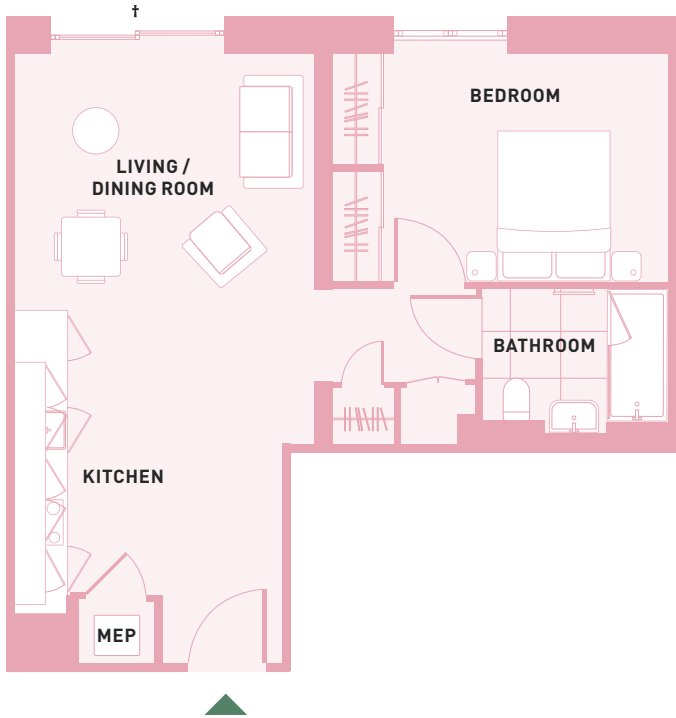


1 BEDROOM APARTMENTS

TYPE: 1B-A2A

1 BEDROOM APARTMENT

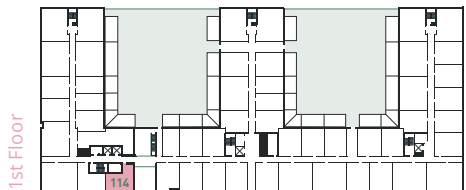
TYPE: 1B-A2A



NET INTERNAL AREA
572 sqft / 53 sqm

† Apartment with Juliet Balcony

These plans are to be used as a guide only to the apartment types available. Plans are not to scale. Units will vary based on location.



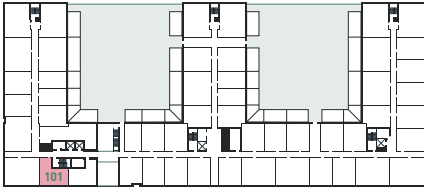


1 BEDROOM APARTMENTS

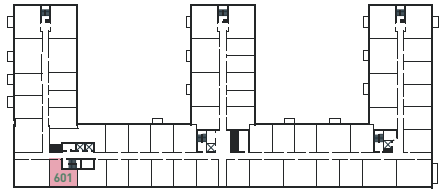
TYPE: 1B-A2

FLOOR LOCATOR

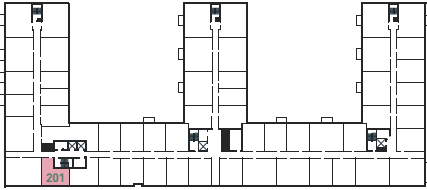
1st Floor



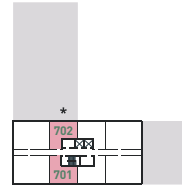
6th Floor



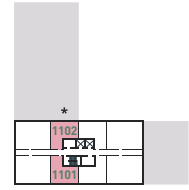
2nd Floor



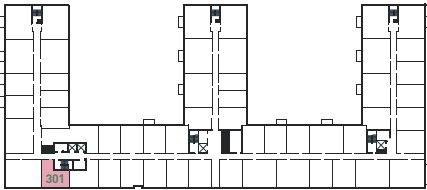
7th Floor



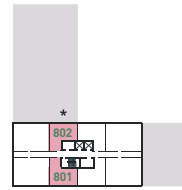
11th Floor



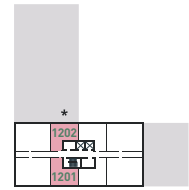
3rd Floor



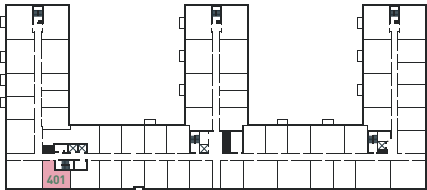
8th Floor



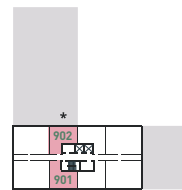
12th Floor



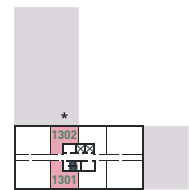
4th Floor



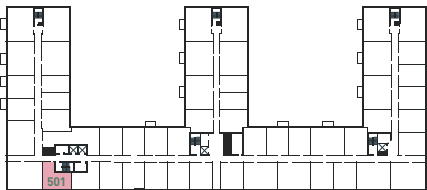
9th Floor



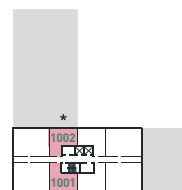
13th Floor



5th Floor

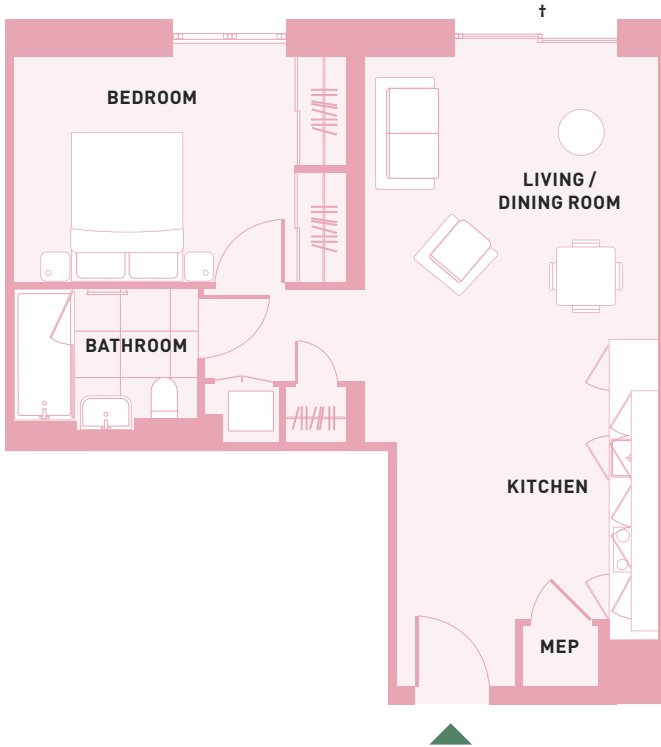


10th Floor



1 BEDROOM APARTMENT

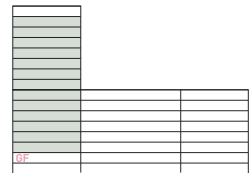
TYPE: 1B-A2



NET INTERNAL AREA
586 sqft / 54 sqm

† Apartments have a Juliet Balcony, apart from 702

These plans are to be used as a guide only to the apartment types available. Plans are not to scale. Units will vary based on location.



Core A
ENTRANCE

* Plan is handed



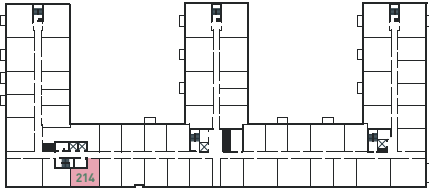


1 BEDROOM APARTMENTS

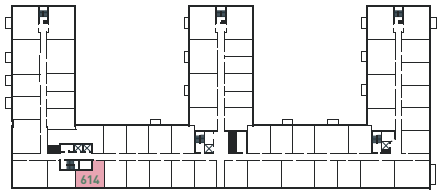
TYPE: 1B-A3

FLOOR LOCATOR

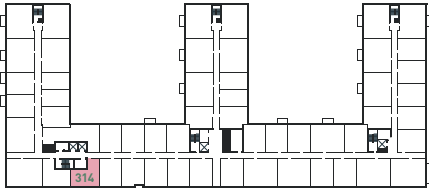
2nd Floor



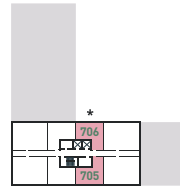
6th Floor



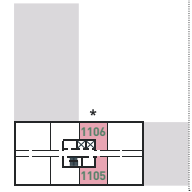
3rd Floor



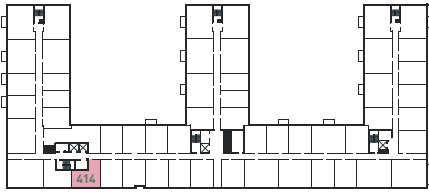
7th Floor



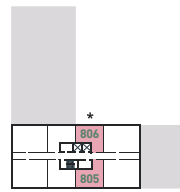
11th Floor



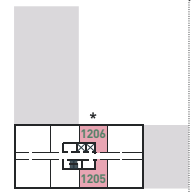
4th Floor



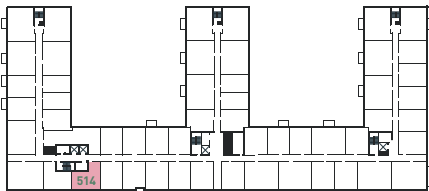
8th Floor



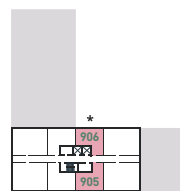
12th Floor



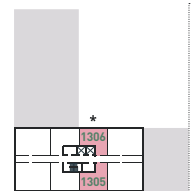
5th Floor



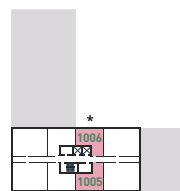
9th Floor



13th Floor

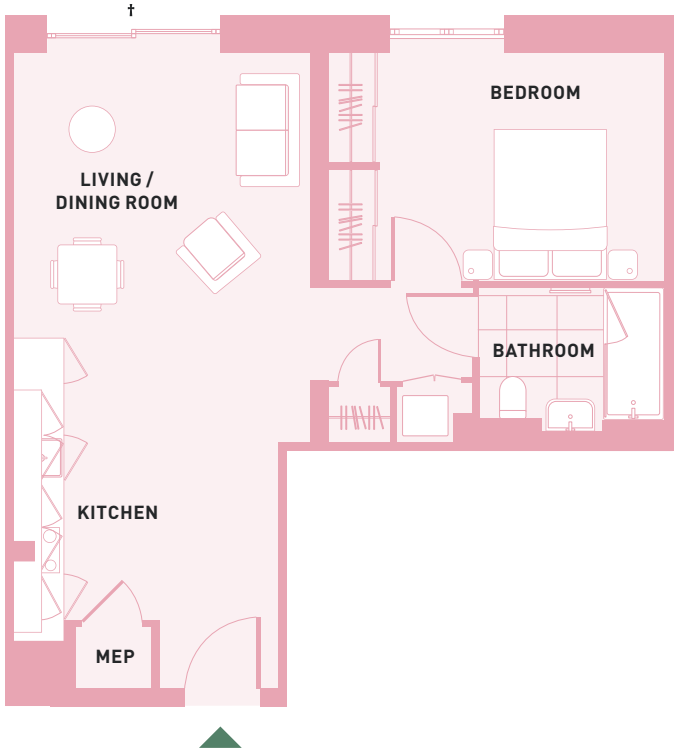


10th Floor



1 BEDROOM APARTMENT

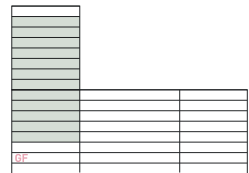
TYPE: 1B-A3



NET INTERNAL AREA
586 sqft / 54 sqm

† Apartments with Juliet Balcony: 214, 314, 414, 514, 614, 705, 706, 805, 806, 905, 906, 1005, 1006, 1105, 1106, 1205, 1206, 1305, 1306

These plans are to be used as a guide only to the apartment types available. Plans are not to scale. Units will vary based on location.



Core A
ENTRANCE

* Plan is handed



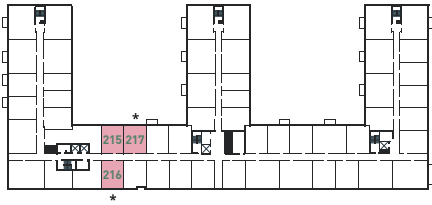


1 BEDROOM APARTMENTS

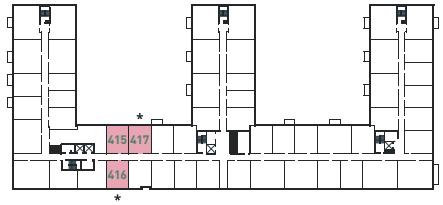
TYPE: 1B-B1

FLOOR LOCATOR

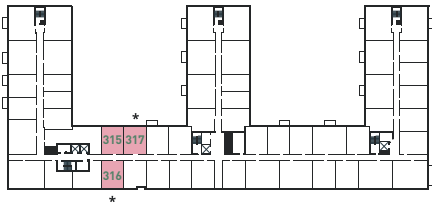
2nd Floor



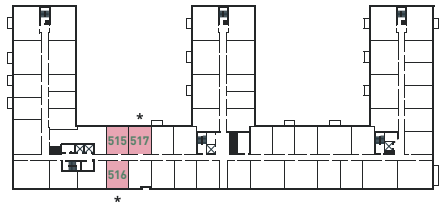
4th Floor



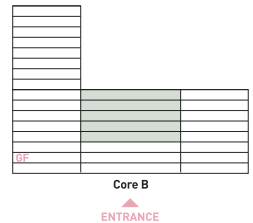
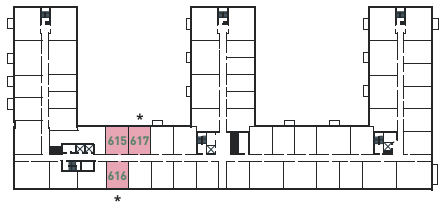
3rd Floor



5th Floor

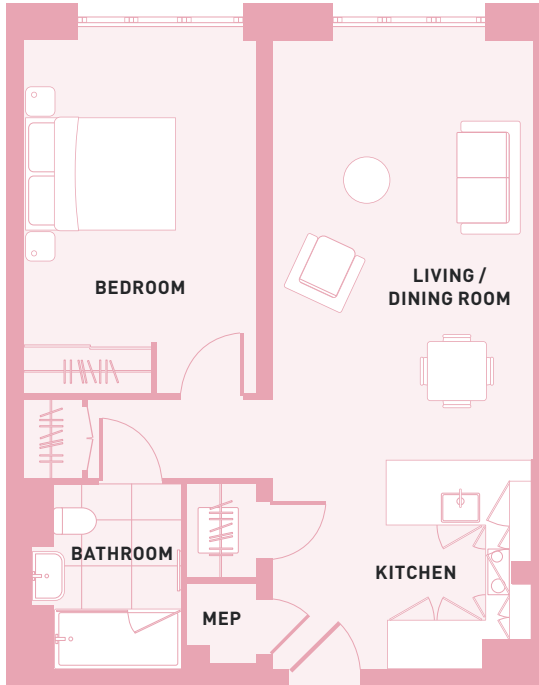


6th Floor



1 BEDROOM APARTMENT

TYPE: 1B-B1



NET INTERNAL AREA

604 sqft / 56 sqm

These plans are to be used as a guide only to the apartment types available. Plans are not to scale. Units will vary based on location.

* Plan is handed





1 BEDROOM APARTMENTS

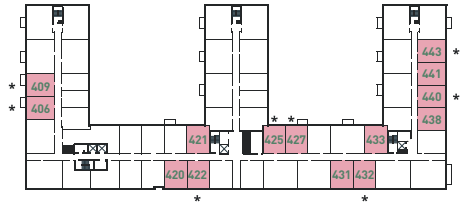
TYPE: 1B-B2

FLOOR LOCATOR

1st Floor



4th Floor



2nd Floor



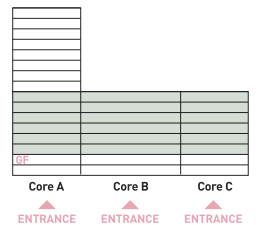
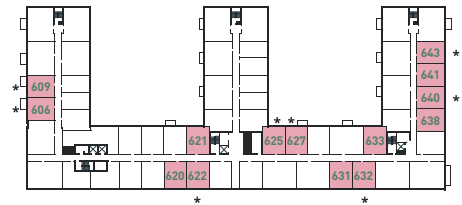
5th Floor



3rd Floor

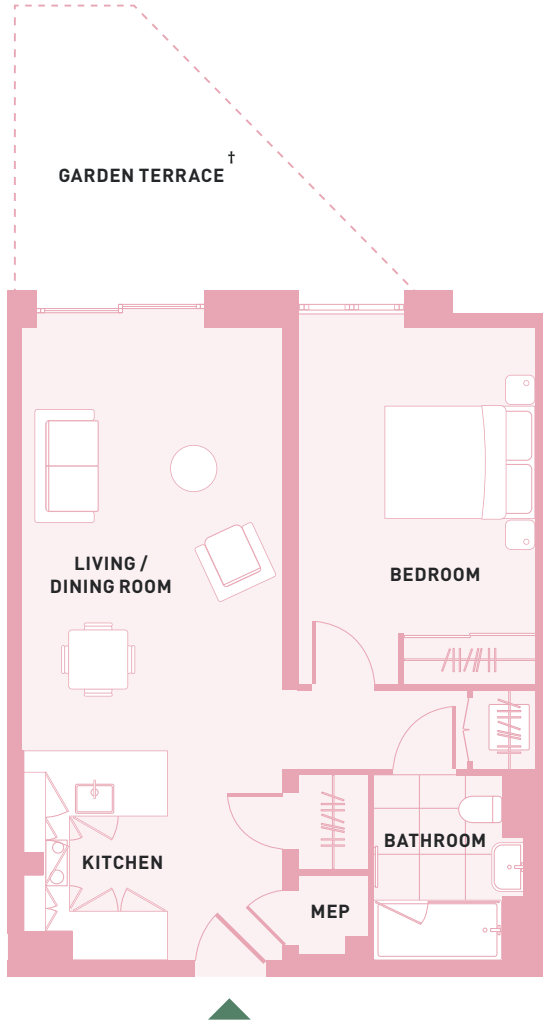


6th Floor



1 BEDROOM APARTMENT

TYPE: 1B-B2



NET INTERNAL AREA
604 sqft / 56 sqm

These plans are to be used as a guide only to the apartment types available. Plans are not to scale. Units will vary based on location.

† Apartments with Garden Terrace:
119 (12sqm), 123 (11.8sqm),
125 (25sqm), 131 (12.5sqm).

Apartments with Balcony: 206, 209, 227,
306, 309, 327, 406, 409, 427, 506, 509,
527, 606, 609, 627.

* Plan is handed





1 BEDROOM APARTMENTS

TYPE: 1B-B3

FLOOR LOCATOR

1st Floor



4th Floor



2nd Floor



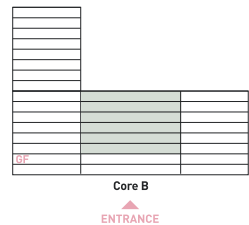
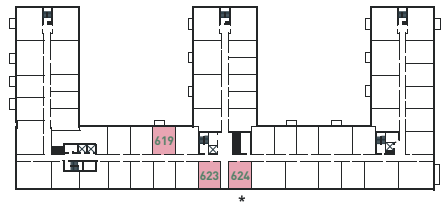
5th Floor



3rd Floor

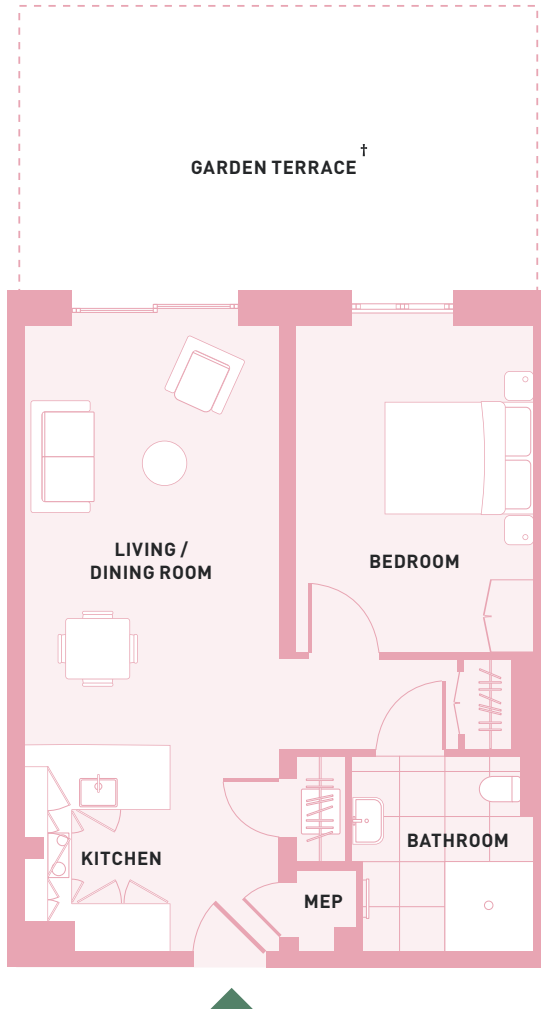


6th Floor



1 BEDROOM APARTMENT

TYPE: 1B-B3



NET INTERNAL AREA

604 sqft / 56 sqm

These plans are to be used as a guide only to the apartment types available. Plans are not to scale. Units will vary based on location.

† Apartments with Garden Terrace: 117 (25sqm).

Apartments with Balcony: 219, 319, 419, 519, 619.

* Plan is handed



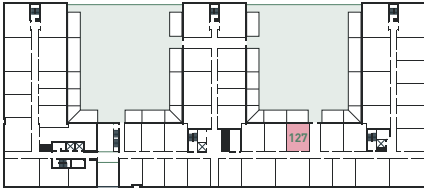


1 BEDROOM APARTMENTS

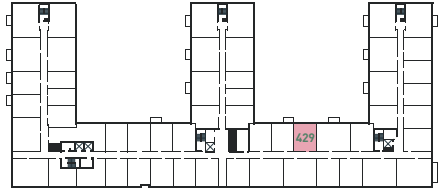
TYPE: 1B-B4

FLOOR LOCATOR

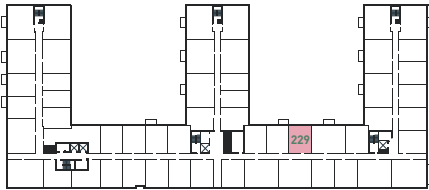
1st Floor



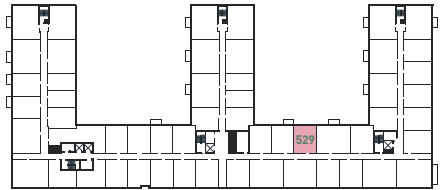
4th Floor



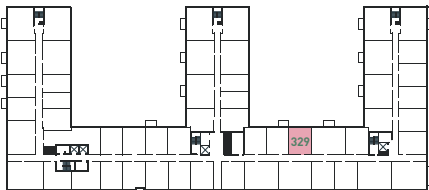
2nd Floor



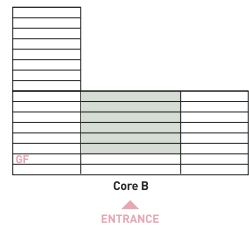
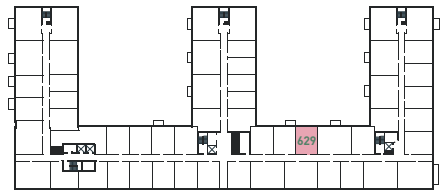
5th Floor



3rd Floor

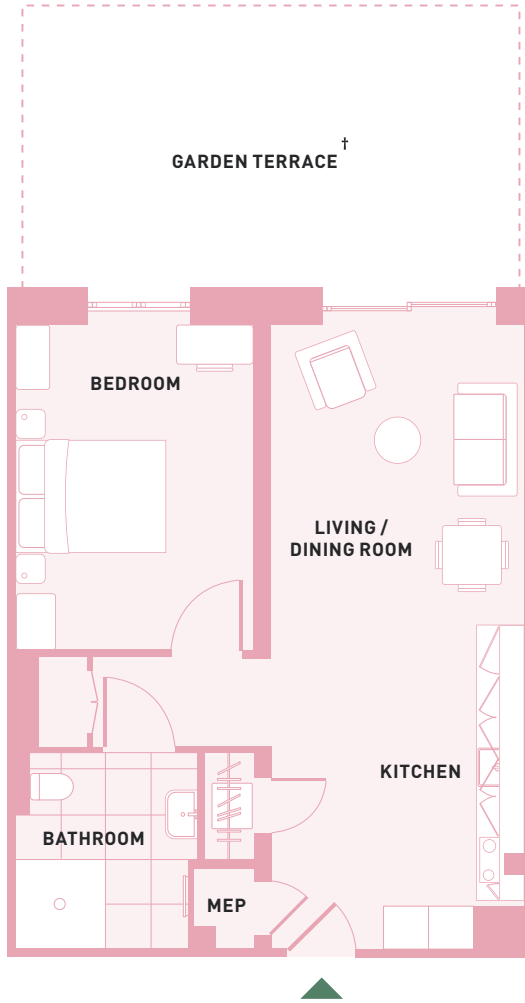


6th Floor



1 BEDROOM APARTMENT

TYPE: 1B-B4



NET INTERNAL AREA

604 sqft / 56 sqm

These plans are to be used as a guide only to the apartment types available. Plans are not to scale. Units will vary based on location.

† Apartments with Garden Terrace: 127 (24sqm).



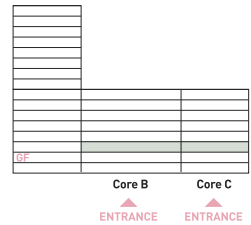
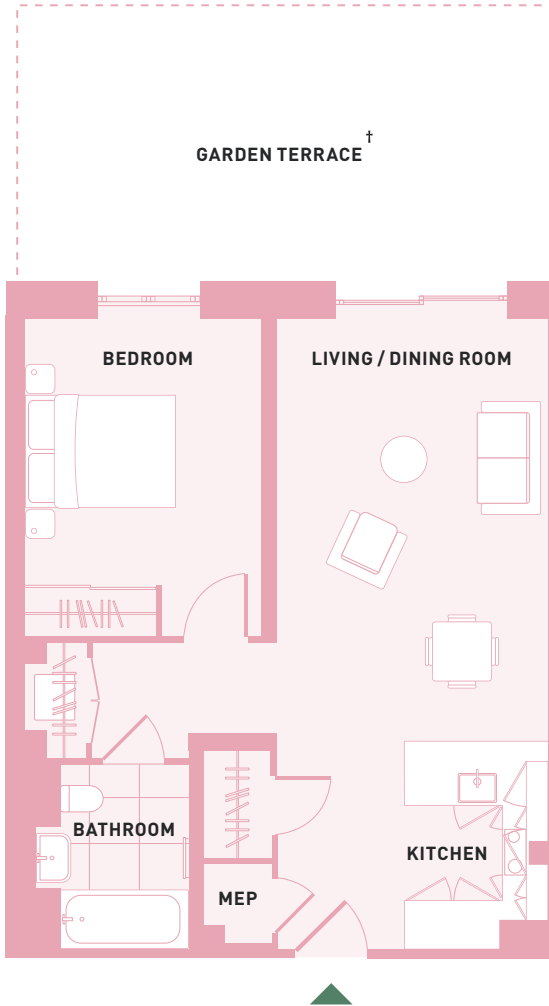


1 BEDROOM APARTMENTS

TYPE: 1B-B4A

1 BEDROOM APARTMENT

TYPE: 1B-B4A



NET INTERNAL AREA

619 sqft / 57 sqm

† Apartments with Garden Terrace:
149 (25.4sqm), 150 (25.4sqm), 129 (23.5sqm).

* Plan is handed

These plans are to be used as a guide only to the apartment types available. Plans are not to scale. Units will vary based on location.



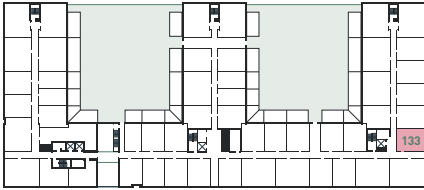


1 BEDROOM APARTMENTS

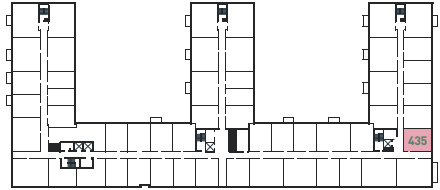
TYPE: 1B-B5

FLOOR LOCATOR

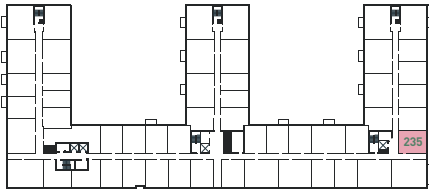
1st Floor



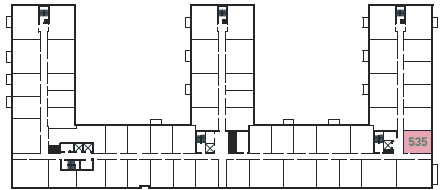
4th Floor



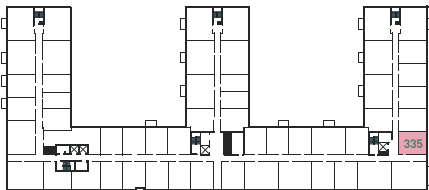
2nd Floor



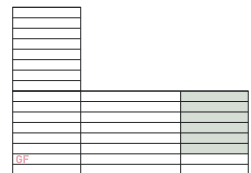
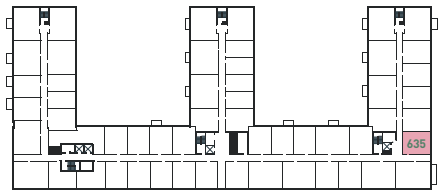
5th Floor



3rd Floor



6th Floor

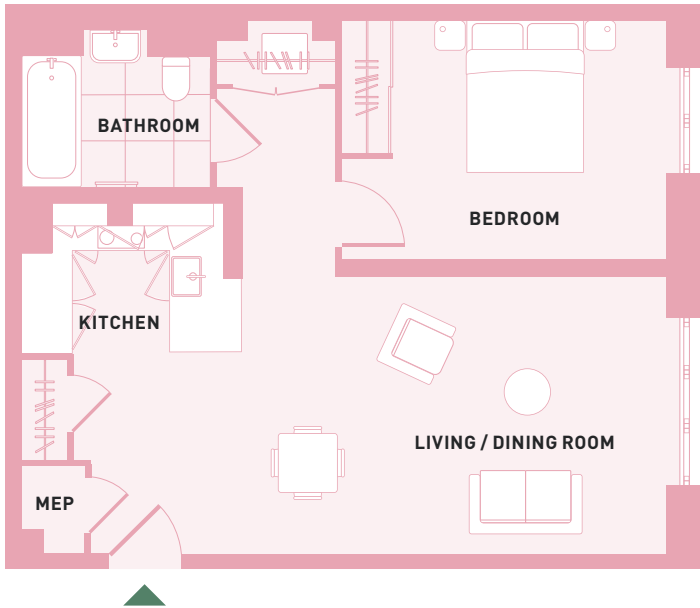


Core C
 ▲
 ENTRANCE



1 BEDROOM APARTMENT

TYPE: 1B-B5



NET INTERNAL AREA

613 sqft / 57 sqm

These plans are to be used as a guide only to the apartment types available. Plans are not to scale. Units will vary based on location.



INTERIOR FEATURES

KITCHEN

- Bespoke kitchen with soft close doors and drawers
- Silestone Technical Stone worktop
- Ceramic Tiles splashback
- Smeg Stainless Steel Multifunction Single Oven Energy Efficiency Class A
- Smeg Microwave Oven with Electric Grill, Silver Glass
- Smeg Touch Control Ceramic Hob with Induction Straight Edge Glass
- Smeg Fully Integrated Dishwasher A+A Rated
- Smeg Integrated In Column Combined Fridge & Freezer Energy Efficiency Class A+
- Smeg Combined washer / dryer (Studio and 1 Bedroom units)
- Smeg Free-standing Washing Machine in white Energy rating A+++B (typically located in utility cupboard; 2 and 3 Bedroom units)
- Smeg Free-standing Dryer, White Energy Efficiency Class: A+ (typically located in utility cupboard; 2 and 3 Bedroom units)

BATHROOM AND ENSUITE

- Roca white sanitaryware
- Crosswater shower set and Vado taps
- Ceramic wall and floor tiles
- Crosswater shower and bath screen
- Radox heated towel rail
- Wall mirror with bespoke shelving and feature lighting



CARPENTRY

- Internal doors to habitable room in dark finish
- Fitted wardrobe to master bedroom
- Bespoke shelving to bathrooms

FLOORING

- Aged timber vinyl Amtico flooring to kitchen, living and dining areas, and bedrooms
- Ceramic floor tiles to bathrooms

SERVICES AND AMENITIES

- Furnished / Unfurnished
- Parking spaces

- Flexible Tenancies
- Courtyards with BBQ grills
- Concierge service
- Residents' lounges
- Meeting Rooms
- Secure Post and Parcel Room
- Secure cycle storage
- Residents' amenities on 14th floor, including:
 - Roof terrace
 - Gym
 - Club Room
 - Cinema with Sonos Sound System
 - Private Dining Room
 - Play Area



Tillermans is part of

GREENFORD
QUAY

BY GREYSTAR