



11 The Rushes

Burton Latimer, Northamptonshire NN15 5PT

Simpson
and Partners

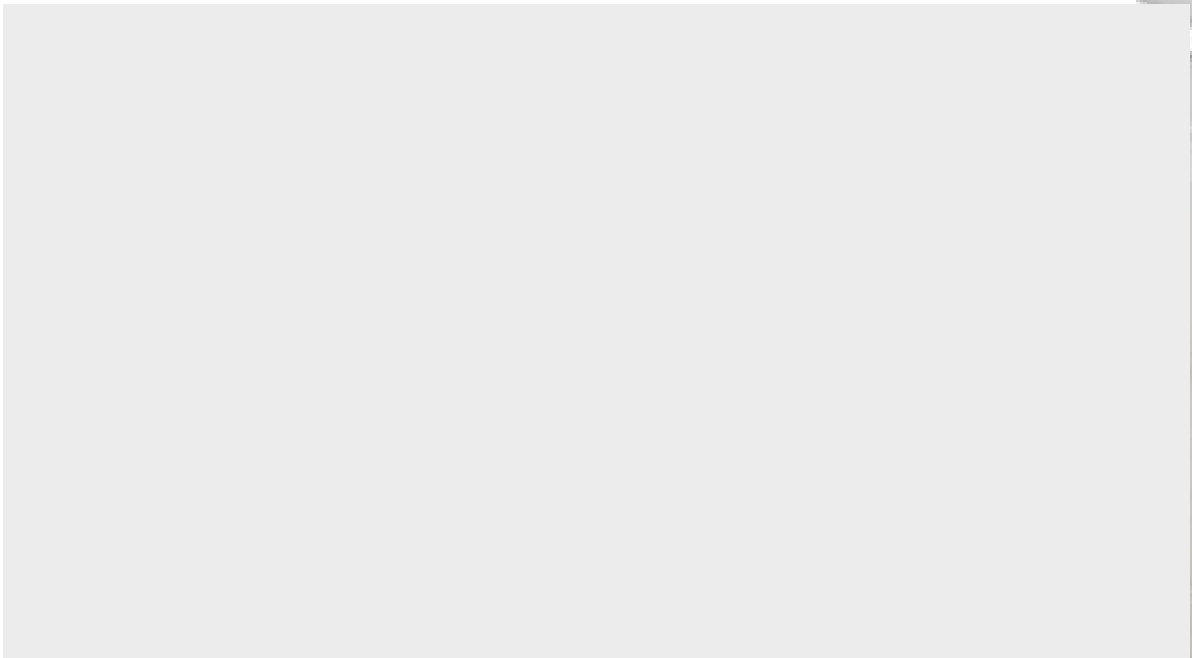


.Located on the outskirts of Burton Latimer is this superb three double bedroom detached property with off road parking and a single garage. Built in 2005 by Messrs Deejak. The property benefits from sealed unit double glazing, gas radiator central heating, security alarm system, 13' kitchen with built in and integrated appliances, 18' living room with feature fireplace, separate dining room, bedroom one with fitted wardrobes and an en-suite shower room, three piece bathroom suite, front and a Southerly facing rear garden. The accommodation comprises entrance hall, downstairs WC, kitchen, living room and a dining room. Then on the first floor there are three bedrooms, en-suite to bedroom one and a bathroom. An internal viewing is a must to appreciate this superb family home.

🛏 3 🚽 2 🚗 2

Offers in excess of: **£340,000**





Offices at:

Kettering
01536 518200

Thrapston
01832 731222

Burton Latimer
01536 722355

Corby
01536 202007

Rushden
01933 418917

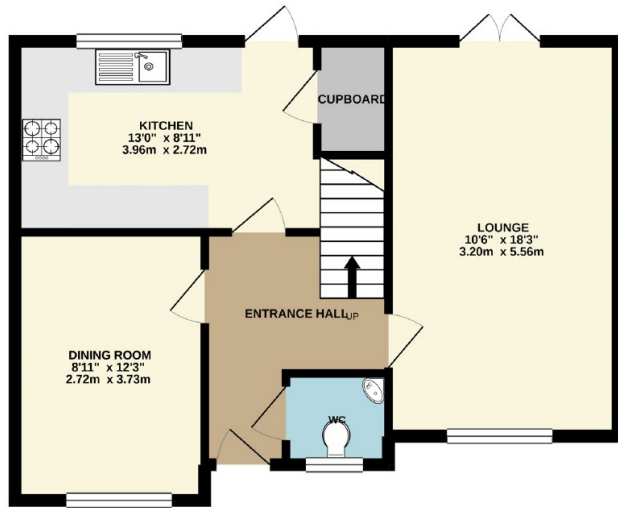
Wellingborough
01933 224953

Northampton
01604 590888

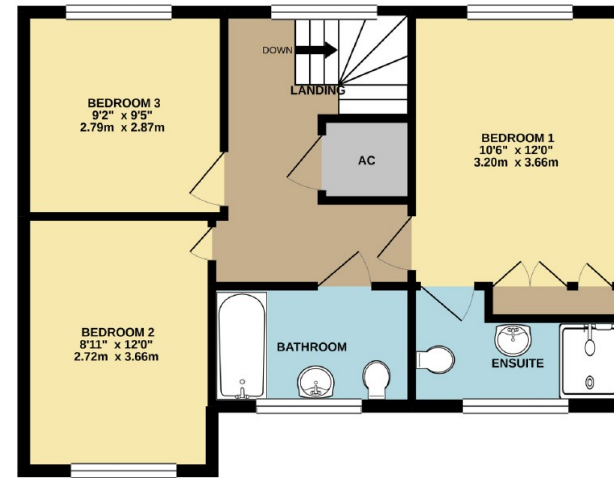




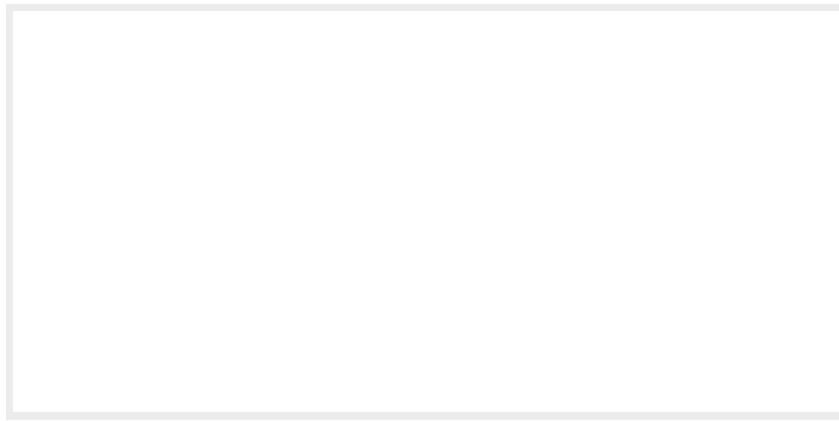
GROUND FLOOR

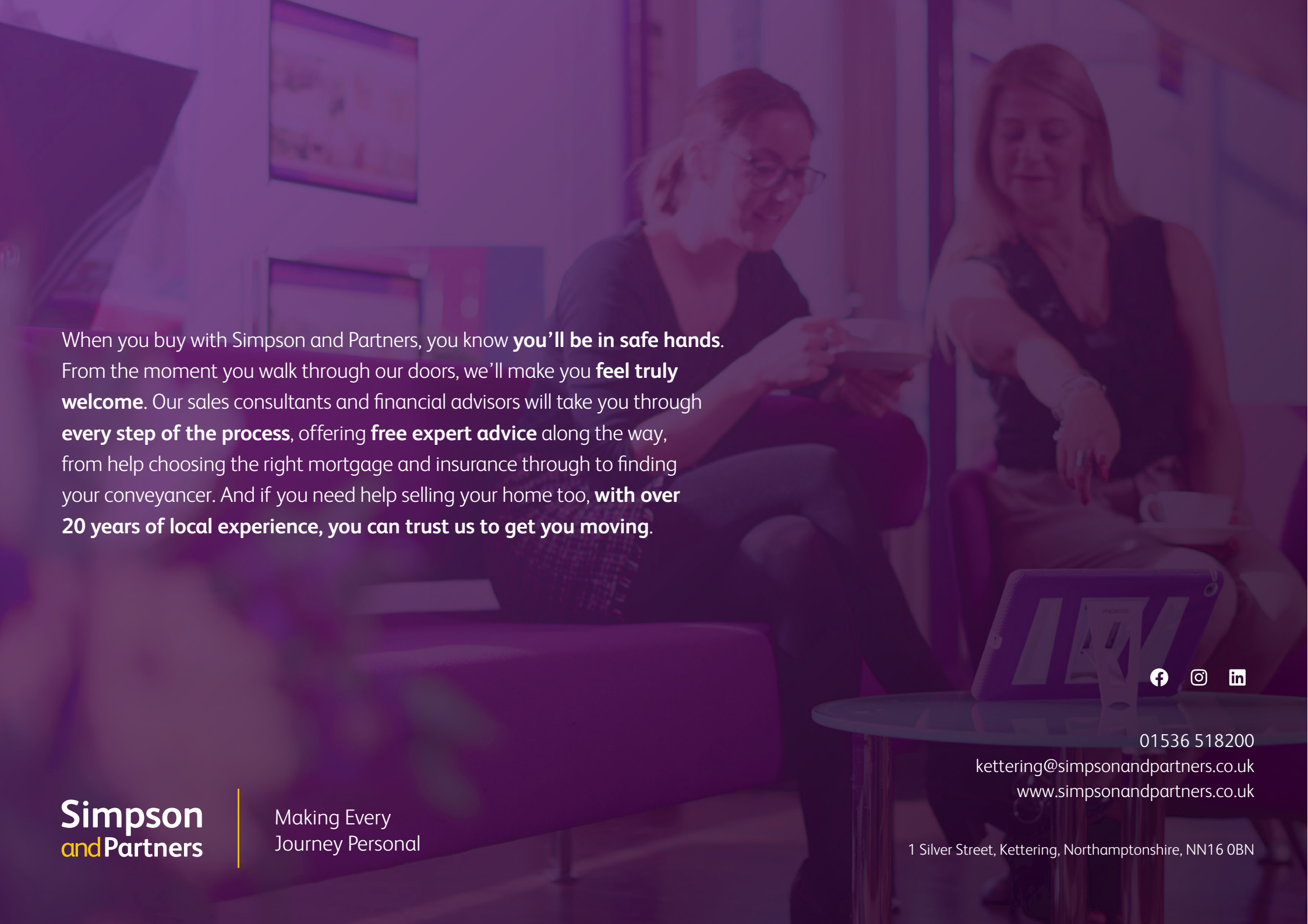


1ST FLOOR



Whilst every attempt has been made to ensure the accuracy of the floor plan contained here, measurements of doors, windows, rooms and any other items are approximate and no responsibility is taken for any error, omission, or mis-statement. The plan is copyright to Simpson and Partners and is for illustrative purposes and should only be used as such by any prospective purchaser. The services, systems and appliances shown have not been tested and no guarantee as to their operability can be given. Made with Metropix ©2021.





When you buy with Simpson and Partners, you know **you'll be in safe hands**. From the moment you walk through our doors, we'll make you **feel truly welcome**. Our sales consultants and financial advisors will take you through **every step of the process**, offering **free expert advice** along the way, from help choosing the right mortgage and insurance through to finding your conveyancer. And if you need help selling your home too, **with over 20 years of local experience, you can trust us to get you moving**.



**Simpson
and Partners**

Making Every
Journey Personal

01536 518200

kettering@simpsonandpartners.co.uk

www.simpsonandpartners.co.uk

1 Silver Street, Kettering, Northamptonshire, NN16 0BN