



27 Cornfield Way

Burton Latimer, Northamptonshire NN155YH

Simpson
and Partners



Simpson and Partners are pleased to offer for sale this beautifully presented three bedroom detached property with block paved off road parking and a single detached garage. The property is offered for sale in 'Show Home' condition and benefits from upvc double glazing, gas radiator central heating, superb 14' bay fronted living room, separate dining room, 10' conservatory, 13' kitchen with built in stainless steel appliances, luxury refitted two piece downstairs WC, bay fronted bedroom one with fitted wardrobes and a luxury fitted en-suite shower room, bedroom two with built in wardrobes, white three piece bathroom suite, front and a beautifully landscaped enclosed rear garden. An internal viewing is a must to appreciate this stunning family home.

 3  3  3

Price: £330,000



Superb bay fronted bedroom with fitted wardrobes and a luxury fitted en-suite shower room.



Offices at:

Kettering
01536 518200

Thrapston
01832 731222

Burton Latimer
01536 722355

Corby
01536 202007

Rushden
01933 418917

Wellingborough
01933 224953

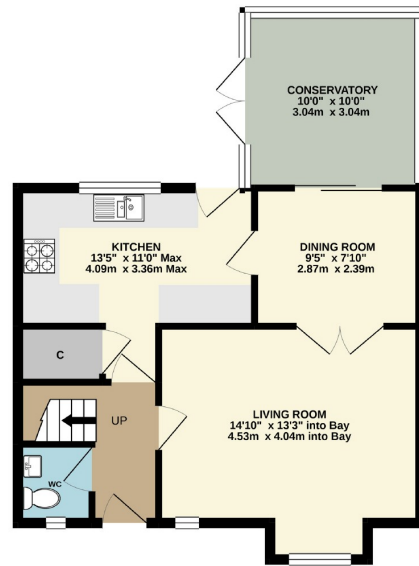
Northampton
01604 590888



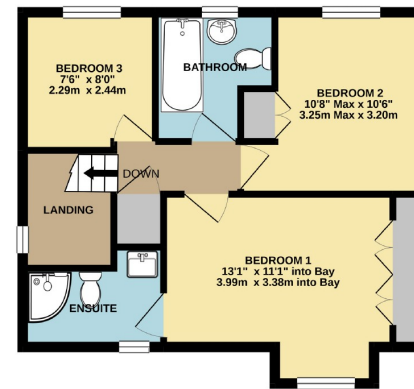
Beautifully landscaped enclosed rear garden.



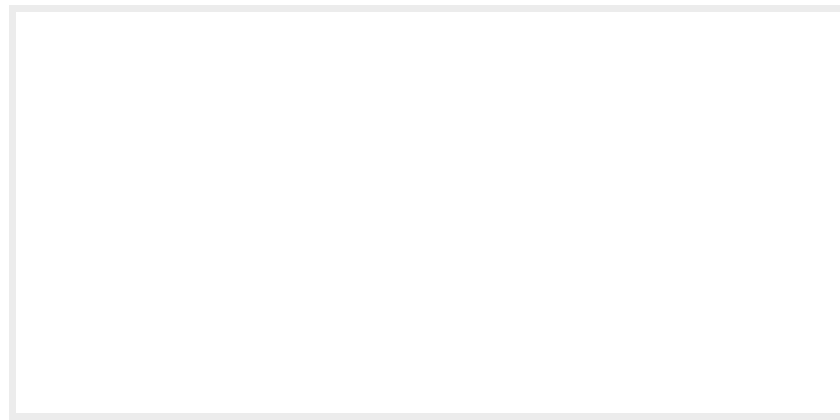
GROUND FLOOR



1ST FLOOR



Whilst every attempt has been made to ensure the accuracy of the floor plan contained here, measurements of doors, windows, rooms and any other items are approximate and no responsibility is taken for any error, omission, or mis-statement. The plan is copyright to Simpson and Partners and is for illustrative purposes and should only be used as such by any prospective purchaser. The services, systems and appliances shown have not been tested and no guarantee as to their operability can be given.
Made with Metropix ©2021



When you buy with Simpson and Partners, you know **you'll be in safe hands**. From the moment you walk through our doors, we'll make you **feel truly welcome**. Our sales consultants and financial advisors will take you through **every step of the process**, offering **free expert advice** along the way, from help choosing the right mortgage and insurance through to finding your conveyancer. And if you need help selling your home too, **with over 20 years of local experience, you can trust us to get you moving**.

**Simpson
and Partners**

Making Every
Journey Personal



01536 518200

kettering@simpsonandpartners.co.uk

www.simpsonandpartners.co.uk

1 Silver Street, Kettering, Northamptonshire, NN16 0BN