



43 Finedon Street

Burton Latimer, Northamptonshire NN15 5SB

Simpson
and Partners

Occupying a corner plot is this beautifully presented three bedroom detached property with off road parking to the front and rear with a single garage. The property benefits from Upvc double glazing and gas radiator heating, luxury fitted 22' kitchen/dining room with built in appliances, 14' living room, 19' upvc conservatory, bedroom with a luxury re-fitted three piece en-suite shower room, beautifully landscaped enclosed South/Westerly facing rear garden. The accommodation comprises entrance hall, downstairs WC, living room, kitchen/dining/family room and a conservatory. Then on the first floor there are three bedrooms, en-suite shower room to bedroom one and a family bathroom. Viewing is highly recommended to appreciate this competitively priced family home.

Price: £314,995



3



2



2

Offices at:

Burton Latimer
01536 722355

Kettering
01536 518200

Thrapston
01832 731222

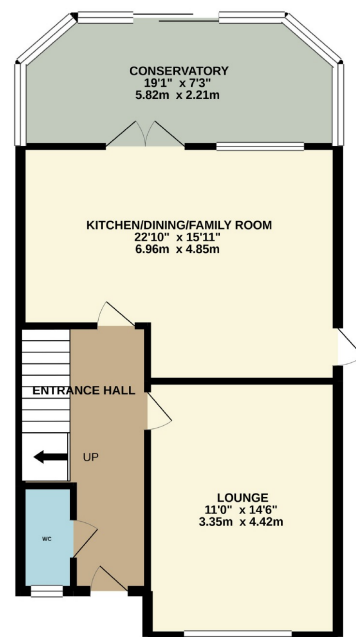
Corby
01536 202007

Rushden
01933 418917

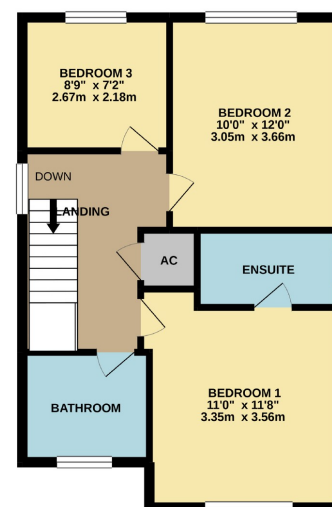
Wellingborough
01933 224953

Northampton
01604 590888

GROUND FLOOR



1ST FLOOR



Whilst every attempt has been made to ensure the accuracy of the floorplan contained herein, measurements of doors, windows, rooms and any other items are approximate and no responsibility is taken for any error, omission or mis-statement. This plan is for illustration purposes only and should be used as such by any prospective purchaser. The services, systems and appliances shown have not been tested and no guarantee as to their operability or efficiency can be given.
Made with Memopix ©2021

When you buy with Simpson and Partners, you know **you'll be in safe hands**. From the moment you walk through our doors, we'll make you **feel truly welcome**. Our sales consultants and financial advisors will take you through **every step of the process**, offering **free expert advice** along the way, from help choosing the right mortgage and insurance through to finding your conveyancer. And if you need help selling your home too, **with over 20 years of local experience, you can trust us to get you moving**.

**Simpson
and Partners**

Making Every
Journey Personal



01536 722355

burton@simpsonandpartners.co.uk

www.simpsonandpartners.co.uk

12 Churchill Way, Burton Latimer, Northamptonshire, NN15