



Asking Price £325,000

Flat 5 Portadene, 6 Portarlington Road, Bournemouth, BH4 8BT



SAXE COBURG™

Property Experts







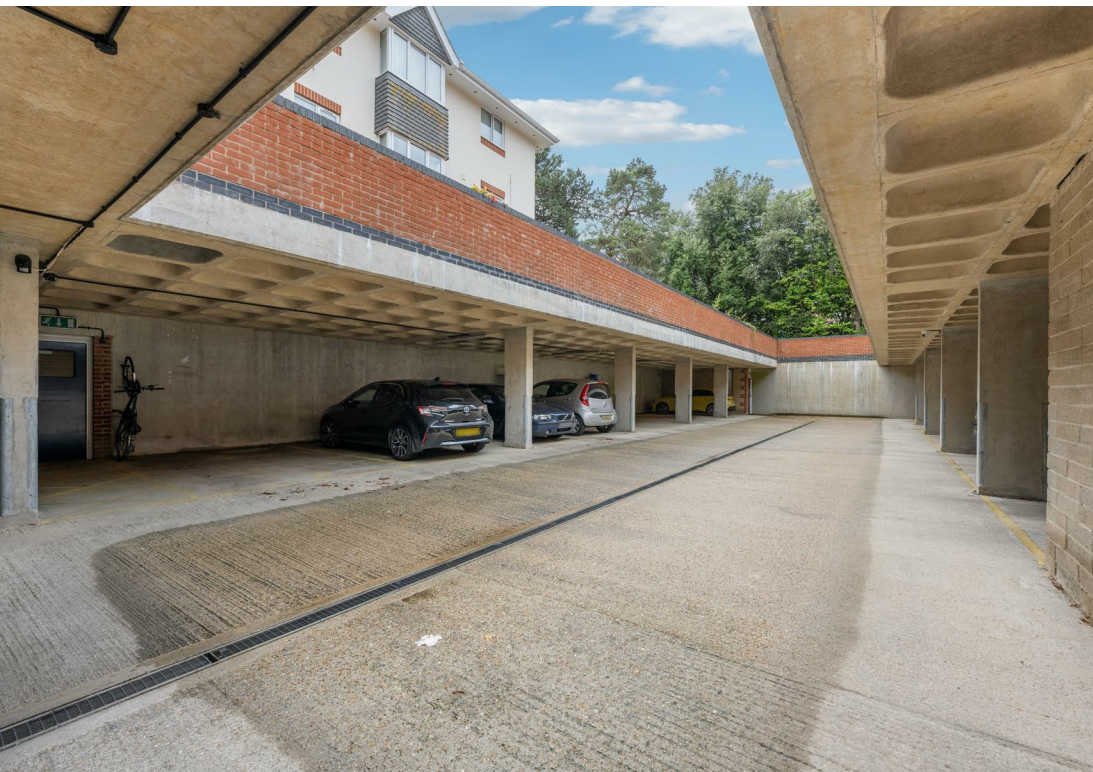
Property description

Nestled in the desirable area of Portarlinton Road, Westbourne this splendid top floor flat offers a perfect blend of comfort and modern living. With two generously sized double bedrooms, including a master suite complete with an ensuite bathroom, this property is ideal for both individuals and small families seeking a stylish home.

The spacious lounge and dining area is a highlight of the flat, featuring patio doors that lead out to a private balcony, perfect for enjoying the fresh air and picturesque views. The well-appointed kitchen/breakfast room provides ample space for culinary creativity, making it a delightful spot for both casual meals and entertaining guests.

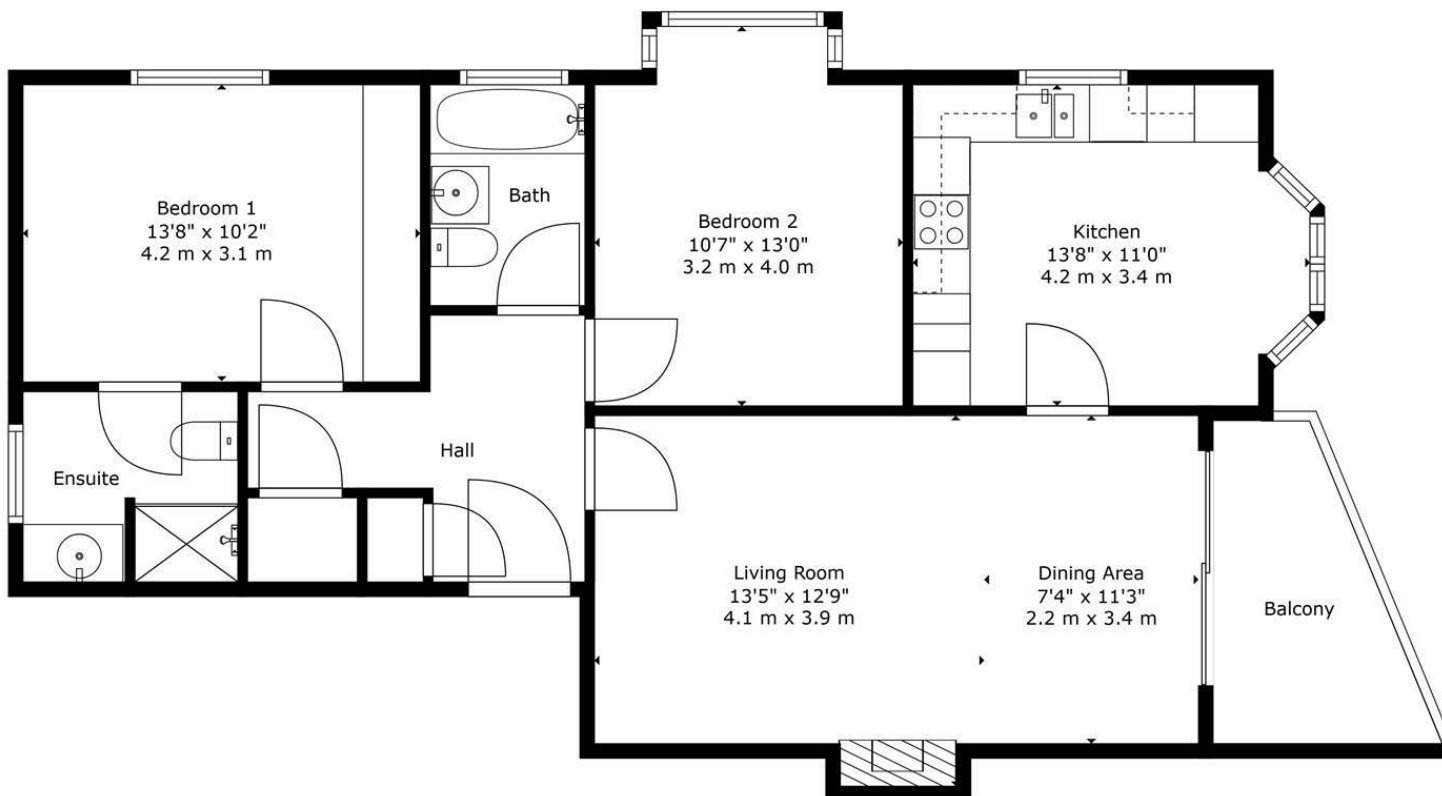
In addition to its attractive living spaces, the flat boasts two bathrooms, ensuring convenience for all residents. The secure undercover parking adds peace of mind, making this property not only a beautiful home but also a practical choice.

With its prime location in Bournemouth, residents will enjoy easy access to local amenities, parks, and stunning coastline. This flat is a wonderful opportunity for those looking to embrace a vibrant lifestyle in a charming seaside town. Don't miss the chance to make this exceptional property your new home.



FEATURES & SPECIFICATIONS

- Two double bedrooms
- Ensuite to master bedroom
- Family bathroom included
- Spacious lounge diner
- Patio doors to balcony
- Spacious kitchen with dining
- Top floor flat
- Allocated underground parking
- Viewing recommended



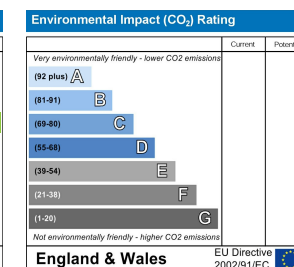
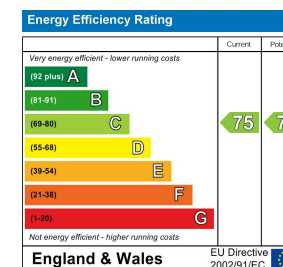
TOTAL: 849 sq. ft, 79 m2
 FLOOR 1: 849 sq. ft, 79 m2
 EXCLUDED AREAS: BALCONY: 62 sq. ft, 6 m2, FIREPLACE: 7 sq. ft, 1 m2, WALLS: 71 sq. ft, 6 m2

Whilst Every Attempt Has Been Made To Ensure The Accuracy Of This Floor Plan. All Measurements Are Approximate And For Display Purposes Only. Created By Property Photography Group.



Disclaimer: These particulars are believed to be correct, but their accuracy is not guaranteed and they do not constitute an offer or contract. Strictly subject to contract, all measurements are approximate.

Agents Note: At no time have we undertaken a structural survey and services have not been tested. Interested parties should satisfy themselves to the structural integrity of the premises and condition / working order of services, plants and equipment





<https://www.saxecoburg.co.uk>

47 Poole Road, Westbourne, Bournemouth, Dorset, BH4 9BA

T: 01202 303066 info@saxecoburg.co.uk



SAXE COBURG™

Property Experts