



Key Features

- ✓ Stunning Period Barn Conversion
- ✓ Four/Five Spacious Bedrooms
- ✓ Two Bedroom Suites
- ✓ Luxurious Family Bathroom
- ✓ Open Plan Living Space with Luxury Kitchen
- ✓ Vaulted Ceilings with Exposed Timbers
- ✓ Range Cooker & Integrated Appliances
- ✓ Generous Garden
- ✓ Parking For 3 /4 Vehicles
- ✓ EPC Rating D



Finn Farm Court, Kingsnorth, Ashford

£2,400 PCM



Northwood of Ashford are delighted to offer this spacious single story barn conversion with a wealth of period features. This stunning property is ideally located in a semi-rural location being part of a cluster of properties making up a farmstead conversion of 12 dwellings which won an award for the design and conversion of the original buildings.

The Granary was converted in 1999 and offers some stunning accommodation and is extremely well presented throughout and offers versatile living space with the added benefit of recent kitchen and bathroom upgrades but still retaining many exposed beams and solid oak flooring and vaulted ceilings.

Finn Farm residents also benefit from the use of 4.2 acres (1.69) hectares of adjoining land on the north side of the farmstead.





Accommodation comprises :

Entrance Hall :

Kitchen/Dining Room : 19'6 x 13'0 (5.94 x 3.96) Stunning range of contemporary style kitchen units under corian work surfaces with Rangemaster induction cooker and integrated dishwasher and fridge freezer.

Sitting Room : 19'3 x 12'1 (5.87m x 3.68m) French doors to garden.

Utility room : Wash hand basin, space & plumbing for washing machine and tumble dryer.

Principle Bedroom : 16'2 x 16'10 (4.97m x 5.13m)

En-Suite Shower Room :

Bedroom Two : 15'6 x 13'3 plus recess (4.72m x 4.04m)
En-Suite Shower Room.

Bedroom Three : 13'0 x 9'0 (3.96m x 2.74m)

Bedroom Four : 13'0 x 7'2 (3.96m x 2.18m)

Bedroom Five/Study 12'10 x 6'9 (3.91m x 2.06m)

Family Bathroom :

Outside : Gravelled driveway with turning and parking space for 4/5 cars. The garden extends to the front and side of the property with a paved terrace, area of decking, lawn, borders and shrubs, brick pizza oven, outside tap and lighting.

Services : Mains water, electricity and drainage. No mains gas is available.

Viewing : Strictly by appointment.

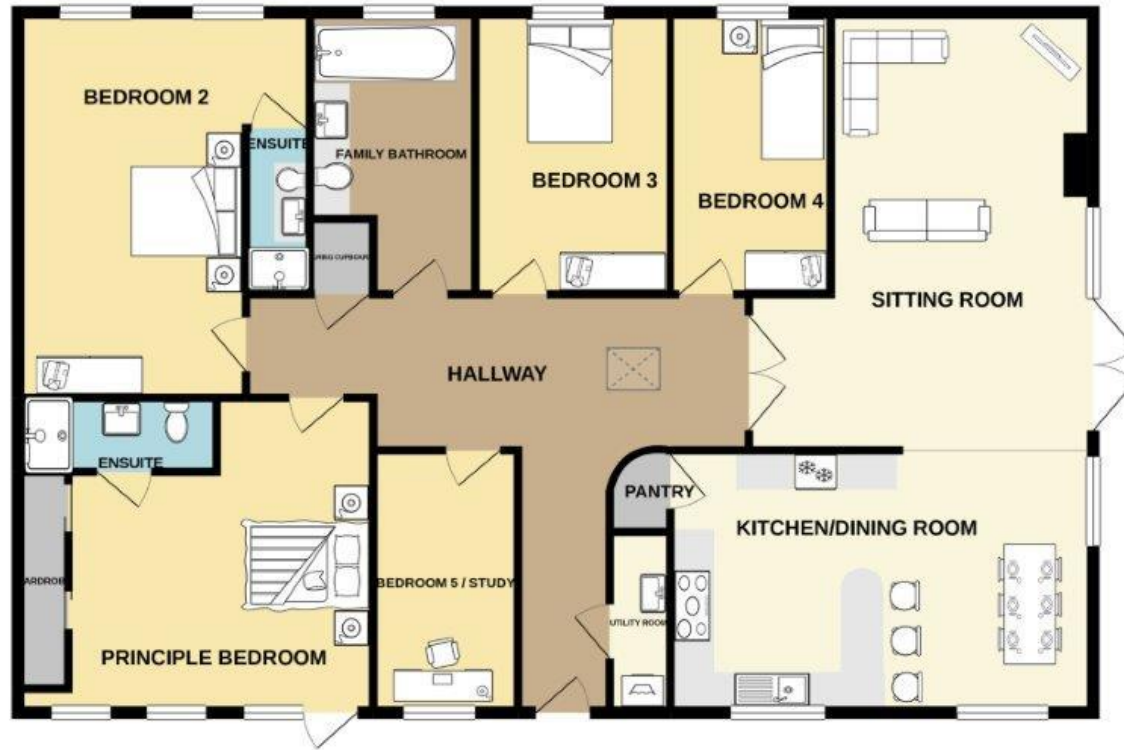




n



GROUND FLOOR
1596 sq.ft. (148.3 sq.m.) approx.



TOTAL FLOOR AREA: 1596 sq.ft. (148.3 sq.m.) approx.

Northwood Ashford

Bridgewater House

4 Victoria Road TN23 7AJ

01233 229 788

ashford@northwooduk.com