



### Prestwood Road | Wednesfield | Wolverhampton | WV11 1RB

This Two Bedroom Semi Detached Bungalow is located on Prestwood Road in Wednesfield and is within very close proximity to amenities nearby such as schools, supermarkets, eateries, New Cross Hospital and has excellent transport links heading into and out of Wolverhampton. The property has one reception room, two bedrooms, kitchen and a family bathroom. Externally the property has off road parking and a large patio area to the rear. The property benefits from gas central heating and double glazing. Chain free. Viewings are essential.

### Offers In Region Of £185,000

- Two Bedroom Bungalow
- Reception Room
- Fitted Kitchen
- Family Bathroom
- Excellent Location & Amenities

## Tenure

Freehold

## Council Tax Band

B

## Viewing Arrangements

Strictly by appointment

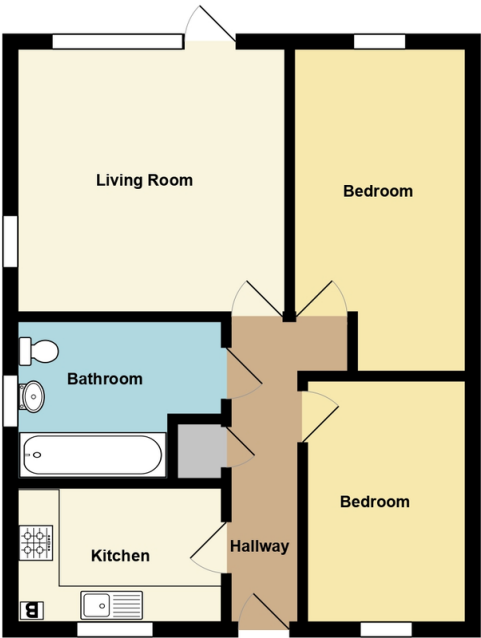
## Contact Details

386 Penn Road  
Wolverhampton  
West Midlands  
WV4 4DF

www.leightonpaul.com  
Wolverhampton@leightonpaul.com  
01902 628004



123a Prestwood Road, Wolverhampton, WV3 1RB  
For Guidance Only. Copyright Leighton Paul



Score	Energy rating	Current	Potential
92+	A		
81-91	B		
69-80	C	69 C	78 C
55-68	D		
39-54	E		
21-38	F		
1-20	G		

Agents Note: Whilst every care has been taken to prepare these sales particulars, they are for guidance purposes only. All measurements are approximate and are for general guidance purposes only and whilst every care has been taken to ensure their accuracy, they should not be relied upon and potential buyers are advised to recheck the measurements.