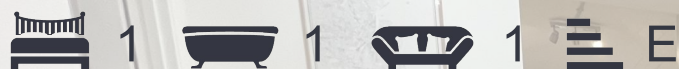




Museum Street, Ipswich, £895 Per month



GRACE ESTATE AGENTS are offering this great opportunity to rent this luxury One Bedroom Apartment located in the heart of Ipswich Town Centre close to shops restaurants and bars.

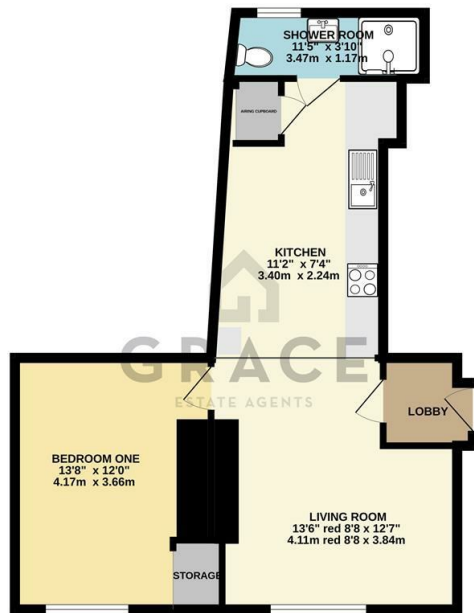
- One Bedroom, Luxury Apartment
- Town Centre Location
- Established Victorian Building
- Fitted Kitchen with Appliances
- Modern Bathroom
- Contemporary Design
- High Ceilings
- Generous Room Sizes
- Viewing is Essential

£895 Per month

Viewing

Please contact our Grace Estate Agents Office on 01473 747728 if you wish to arrange a viewing appointment for this property or require further information.

GROUND FLOOR
558 sq.ft. (51.8 sq.m.) approx.



TOTAL FLOOR AREA: 558 sq.ft. (51.8 sq.m.) approx.
Whilst every attempt has been made to ensure the accuracy of the floorplan contained here, measurements of doors, windows, rooms and any other items are approximate and no responsibility is taken for any error, omission or misstatement. This plan is for guidance purposes only and should be used as such by any prospective purchaser. The services, systems and appliances shown have not been tested and no guarantee is given as to their operability or efficiency can be given.
Made with letbricks (2025)



Energy Efficiency Rating			Environmental Impact (CO ₂) Rating		
Very energy efficient - lower running costs	Current	Potential	Very environmentally friendly - lower CO ₂ emissions	Current	Potential
(92 plus) A			(92 plus) A		
(81-91) B			(81-91) B		
(69-80) C			(69-80) C		
(55-68) D			(55-68) D		
(38-54) E			(38-54) E		
(21-38) F			(21-38) F		
(1-20) G			(1-20) G		
Not energy efficient - higher running costs			Not environmentally friendly - higher CO ₂ emissions		
England & Wales	EU Directive 2002/91/EC		England & Wales	EU Directive 2002/91/EC	



These particulars, whilst believed to be accurate are set out as a general outline only for guidance and do not constitute any part of an offer or contract. Intending purchasers should not rely on them as statements of representation of fact, but must satisfy themselves by inspection or otherwise as to their accuracy. No person in this firm's employment has the authority to make or give any representation or warranty in respect of the property.