



Montague Road, Felixstowe,
£525,000

A truly substantial four bedroom two reception double bay fronted character residence located on a corner plot just a short walk from both the seafront and town centre in Felixstowe.

- **CHARACTER RESIDENCE**
- **DETACHED**
- **FOUR BEDROOMS**
- **TWO RECEPTIONS**
- **CONSERVATORY**
- **KITCHEN/DINER**
- **UTILITY ROOM**
- **EN-SUITE**
- **SOUTH FACING ROOF TERRACE**
- **GARAGE**

PROPERTY:

A fantastic opportunity to acquire this most substantial four bedroom two reception double bay fronted detached house located on a corner plot in a prominent position close to both the seafront with its wealth of facilities and the town centre with shops and those everyday needs. This versatile property is offered CHAIN FREE with a host of possibilities ideally suiting a buyer looking to put their own stamp onto a lovely established character residence.

The accommodation comprises:- hallway, reception room, study, conservatory, kitchen/dining room and utility room. The first floor rooms lead off the landing with four bedrooms, en-suite, family bathroom and roof terrace. There are also established gardens to the front and rear and good sized driveway giving access to the Garage and ample off road parking.

Council Tax Band E:
Suffolk





LOCATION:

This property is perfectly placed for a walk to the sea front and the beach which has been heavily invested in over the last three years offering many new attractions and an abundance of restaurants including the boardwalk which gives fantastic views over the sea and not to mention the short walk to the town which also offers a fantastic range of restaurants and shops.

HALLWAY:

33'7 x 5'5 (10.24m x 1.65m)

Wooden entrance door to:- coved cornice, staircase to first floor landing, storage cupboard under stairs, radiator and door to rear garden.

LOUNGE:

17'2 x 13'5 (5.23m x 4.09m)

Coved cornice, picture rail, feature sash style bay window to front elevation with inset window seating, radiator, window to side elevation, fire surround with open fire place (not tested) radiator and open to:- Study.



**RECEPTION ROOM/DINING:**

13'5 x 13'0 (4.09m x 3.96m)

Coved cornice, picture rail, marble fire surround with inset open fire place (not tested), feature sash style bay window to front elevation and two radiators.

STUDY:

13'5 x 7'2 (4.09m x 2.18m)

Access via double doors to conservatory.

CONSERVATORY:

9'4 x 8'5 (2.84m x 2.57m)

Polycarbonate roof, double glazed picture window to garden, double glazed doors to rear and door to garage.

KITCHEN/DINING ROOM:

19'8 x 13'7 (5.99m x 4.14m)

Window to side elevation, stainless steel sink unit inset to work granite style work surface with cupboards under, further modern style floor standing cupboards drawers and units, matching wall mounted units, inset four ring gas hob with built in electric over to tall standing unit, feature redbrick chimney breast with inset storage cupboards. space for tumble drier, space for dishwasher, space for fridge freezer, access to lobby (with door to garden) and utility room.

UTILITY ROOM:

6'8 x 5'10 (2.03m x 1.78m)

Window to garden, stainless steel sink unit with cupboards under space for appliances.

CELLAR:

Door and steps down to cellar area.

LANDING:

18'2 x 5'5 (5.54m x 1.65m)

Doors to bedrooms, family bathroom and roof terrace.

BEDROOM 1:

13'6 x 12'10 (4.11m x 3.91m)

Sash window to front and window to side elevation, radiator, built in wardrobes and door to en-suite.





EN-SUITE:

7'3 x 7'1 (2.21m x 2.16m)

Smooth ceiling, wash hand basin with strip light/shaver socket over, low level WC wet room style open shower area with shower unit and part tiled walls.

BEDROOM 2:

13'6 x 13'3 (4.11m x 4.04m)

Sash window to front elevation, radiator , fire surround and wash hand basin.

BEDROOM 3:

13'6 x 12'0 (4.11m x 3.66m)

Window to rear elevation, wash hand basin, fire surround and radiator.

BEDROOM 4:

12'2 x 8'0 (3.71m x 2.44m)

Window to rear elevation, built in airing cupboard and steps with access to roof terrace, overlooking terrace with southerly outlook.





BATHROOM:

13'6 x9'2 (4.11m x2.79m)

Corner style Shower with shower unit, central panel bath with mixer tap shower spray, pedestal wash hand basin, low level WC , radiator window to one elevation and built in storage with mirrored doors.

ROOF TERRACE:

Wrought iron railing/balustrade, Astro turf, southerly aspect and partial views to seafront

FRONT GARDEN:

Established lawn mainly to lawn with flower beds and driveway to garage.

REAR GARDEN:

Southerly aspect, enclosed, block paved rear area forming patio.

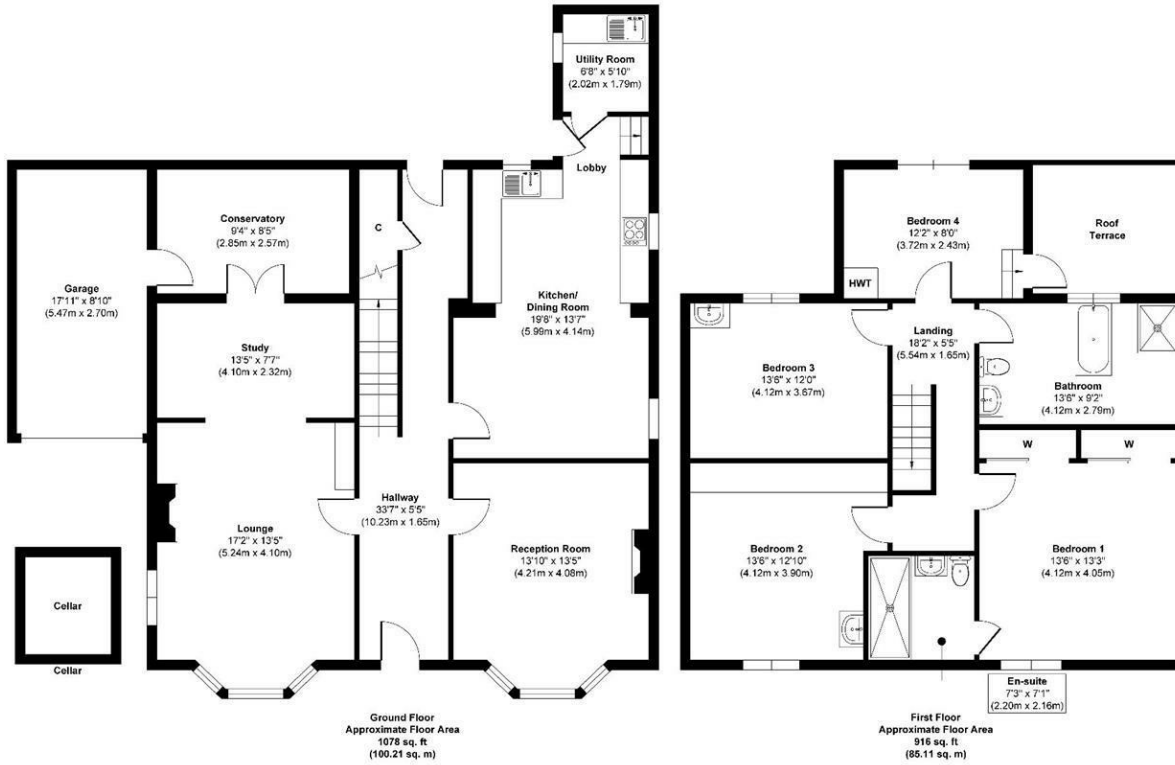
GARAGE:

17'11 x8'10 (5.46m x2.69m)





8 Montague Road, IP11 7HF



Approx. Gross Internal Floor Area 1994 sq. ft / 185.32 sq. m

Illustration for identification purposes only, measurements are approximate, not to scale.

Produced by Elements Property

Viewing

Please contact our Grace Estate Agents Office on 01473 747728 if you wish to arrange a viewing appointment for this property or require further information.

These particulars, whilst believed to be accurate are set out as a general outline only for guidance and do not constitute any part of an offer or contract. Intending purchasers should not rely on them as statements of representation of fact, but must satisfy themselves by inspection or otherwise as to their accuracy. No person in this firm's employment has the authority to make or give any representation or warranty in respect of the property.



| Energy Efficiency Rating | | Current | Potential |
|---|--------------------|-------------------------|-----------|
| Very energy efficient - lower running costs | (92 plus) A | | |
| | (81-91) B | | |
| | (69-80) C | | |
| | (55-68) D | | |
| | (39-54) E | | |
| | (21-38) F | | |
| | (1-20) G | | |
| Not energy efficient - higher running costs | | | |
| England & Wales | | EU Directive 2002/91/EC | |
| | | | 80 |
| | | 45 | |

| Environmental Impact (CO ₂) Rating | | Current | Potential |
|---|--------------------|-------------------------|-----------|
| Very environmentally friendly - lower CO ₂ emissions | (92 plus) A | | |
| | (81-91) B | | |
| | (69-80) C | | |
| | (55-68) D | | |
| | (39-54) E | | |
| | (21-38) F | | |
| | (1-20) G | | |
| Not environmentally friendly - higher CO ₂ emissions | | | |
| England & Wales | | EU Directive 2002/91/EC | |