



24 Stonelands Park, Dawlish

Guide Price £425,000





24 Stonelands Park

Dawlish, Dawlish

Council Tax band: D

Tenure: Freehold

EPC Energy Efficiency Rating: D

EPC Environmental Impact Rating:

- WELL PRESENTED DETACHED PROPERTY
- RECEPTION HALL, KITCHEN DINER, LIVING ROOM, STUDY
- THREE BEDROOMS
- GROUND FLOOR SHOWER ROOM, UPPER FLOOR SHOWER ROOM
- DRIVEWAY PARKING, GARAGE, UTILITY SPACE
- UPVC DOUBLE GLAZING, GAS CENTRAL HEATING
- NO UPWARD CHAIN



You can include any text here. The text can be modified upon generating your brochure.





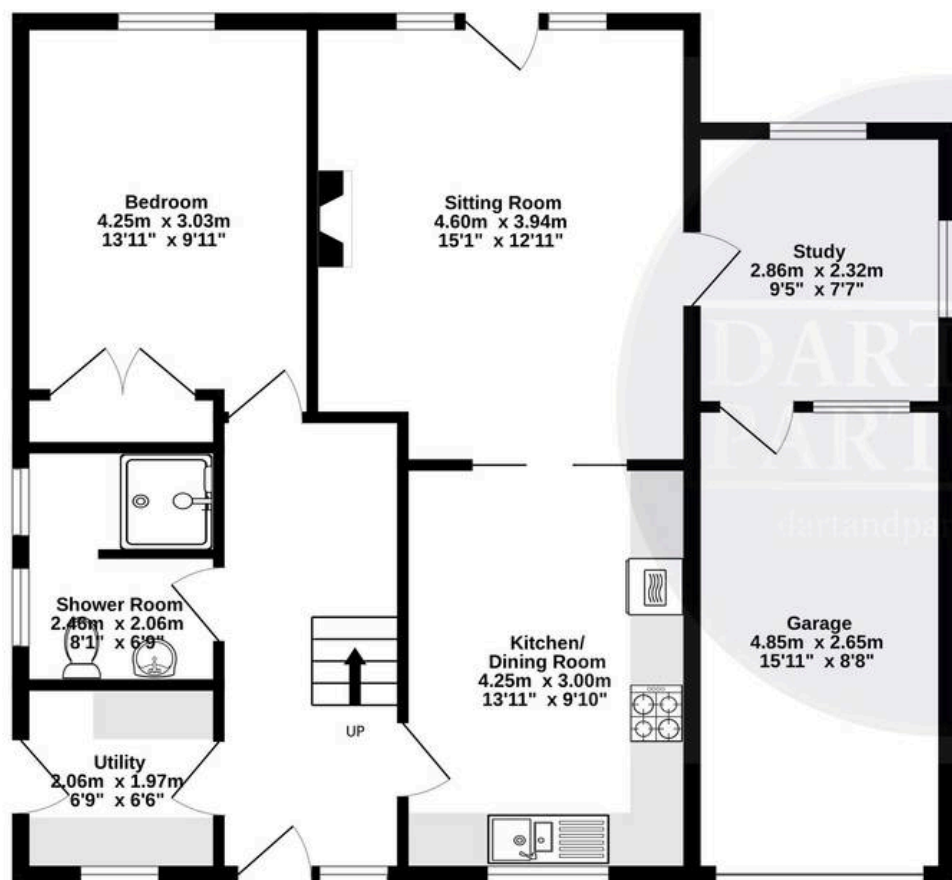
You can include any text here. The text can be modified upon generating your brochure.



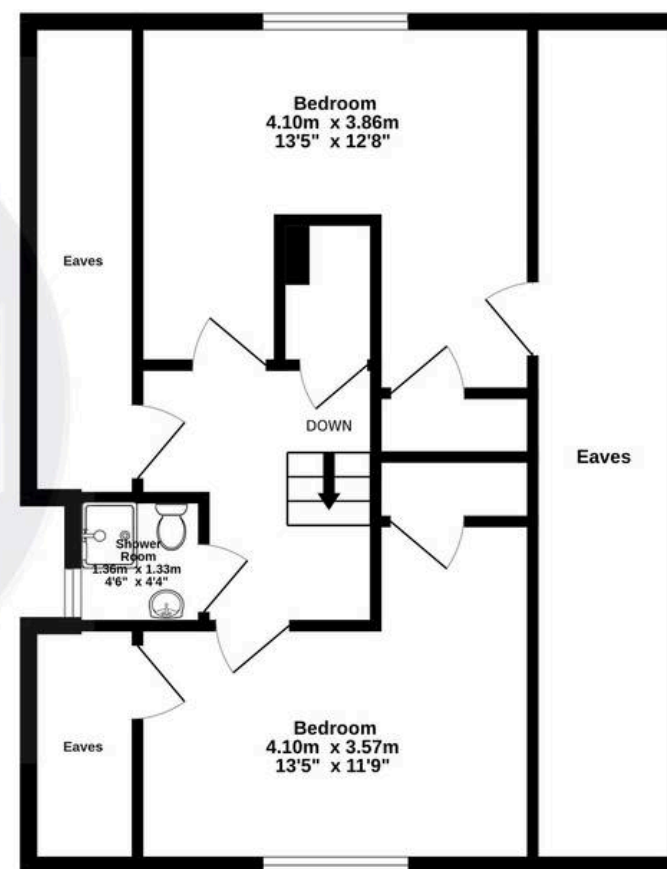
You can include any text here. The text can be modified upon generating your brochure.



Ground Floor
81.5 sq.m. (878 sq.ft.) approx.



1st Floor
58.1 sq.m. (626 sq.ft.) approx.



TOTAL FLOOR AREA : 139.7 sq.m. (1503 sq.ft.) approx.

Whilst every attempt has been made to ensure the accuracy of the floorplan contained here, measurements of doors, windows, rooms and any other items are approximate and no responsibility is taken for any error, omission or mis-statement. This plan is for illustrative purposes only and should be used as such by any prospective purchaser. The services, systems and appliances shown have not been tested and no guarantee as to their operability or efficiency can be given.
Made with Metropix ©2025

