



2 Cofton Hill, Cockwood

In Excess of £280,000





2 Cofton Hill

Cockwood, Exeter

Council Tax band: TBD

Tenure: Freehold

EPC Energy Efficiency Rating: D

EPC Environmental Impact Rating:

- DETACHED COTTAGE IN THE CENTRE OF COCKWOOD
- WONDERFUL VIEWS ACROSS THE RIVER EXE
- NO ONWARD CHAIN
- FITTED KITCHEN, UTILITY
- LIVING ROOM DINER
- ENCLOSED COURTYARD GARDEN
- HAS BEEN RUN AS A SUCCESSFUL AIRBNB



You can include any text here. The text can be modified upon generating your brochure.

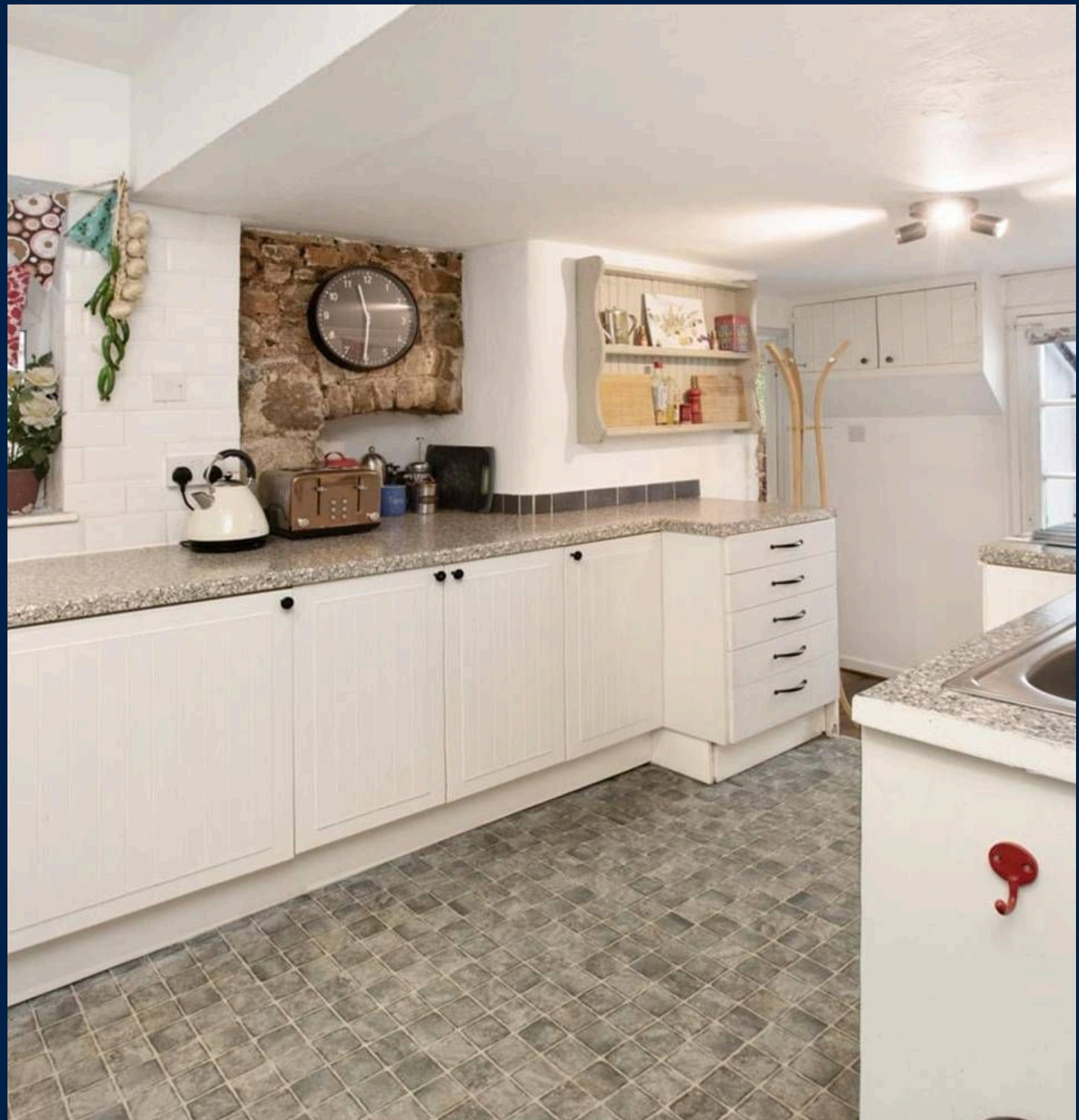




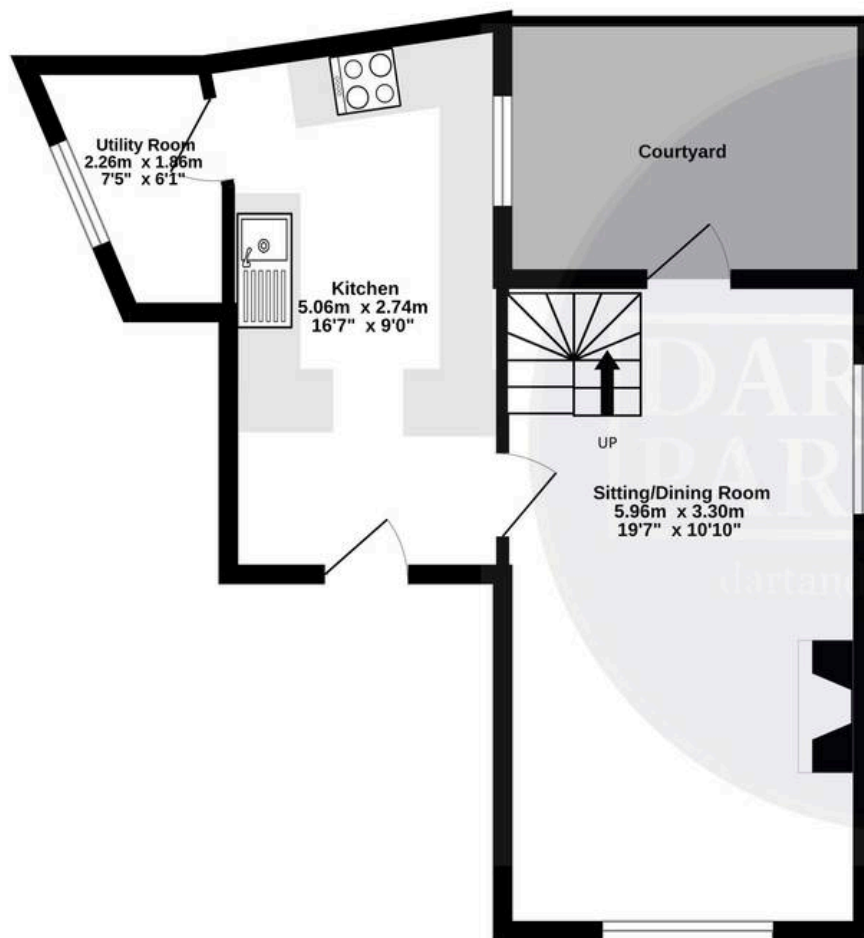
You can include any text here. The text can be modified upon generating your brochure.



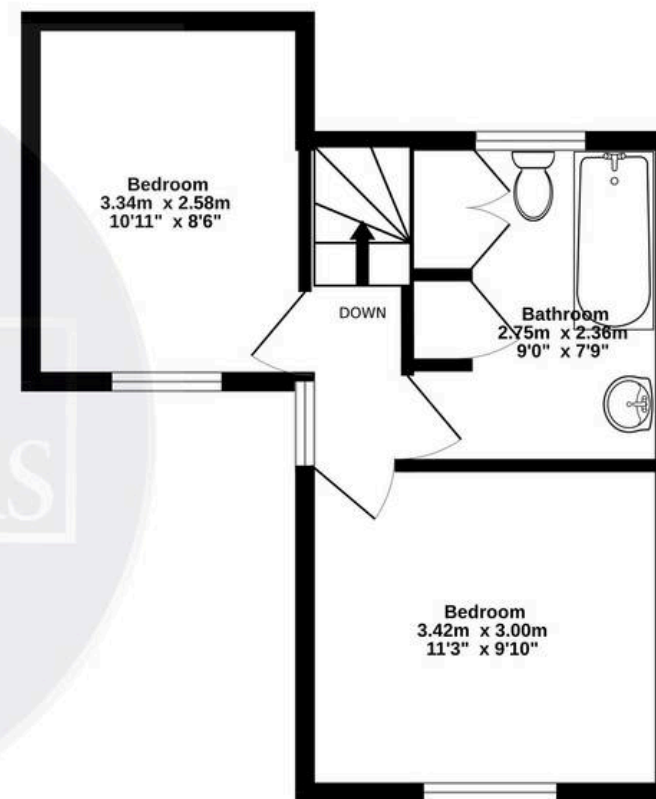
You can include any text here. The text can be modified upon generating your brochure.



Ground Floor
34.4 sq.m. (370 sq.ft.) approx.



1st Floor
27.9 sq.m. (300 sq.ft.) approx.



TOTAL FLOOR AREA : 62.3 sq.m. (670 sq.ft.) approx.

Whilst every attempt has been made to ensure the accuracy of the floorplan contained here, measurements of doors, windows, rooms and any other items are approximate and no responsibility is taken for any error, omission or mis-statement. This plan is for illustrative purposes only and should be used as such by any prospective purchaser. The services, systems and appliances shown have not been tested and no guarantee as to their operability or efficiency can be given.

Made with Metropix ©2025

