



14 Barton Crescent, Dawlish

Guide Price £425,000

DART &
PARTNERS
Established 1971



14 Barton Crescent

Dawlish, Dawlish

Council Tax band: F

Tenure: Freehold

EPC Energy Efficiency Rating: D

EPC Environmental Impact Rating:

- FAMILY BATHROOM, SEPARATE WC
- VESTIBULE, RECEPTION HALL
- KITCHEN BREAKFAST ROOM, DINING ROOM, LIVING ROOM
- GAS CENTRAL HEATING
- VICTORIAN TERRACED PROPERTY WITH MANY CHARACTER FEATURES
- CONVENIENTLY LOCATED CLOSE TO TOWN
- FIVE BEDROOMS
- REAR COURTYARD GARDEN, WORKSHOP



You can include any text here. The text can be modified upon generating your brochure.





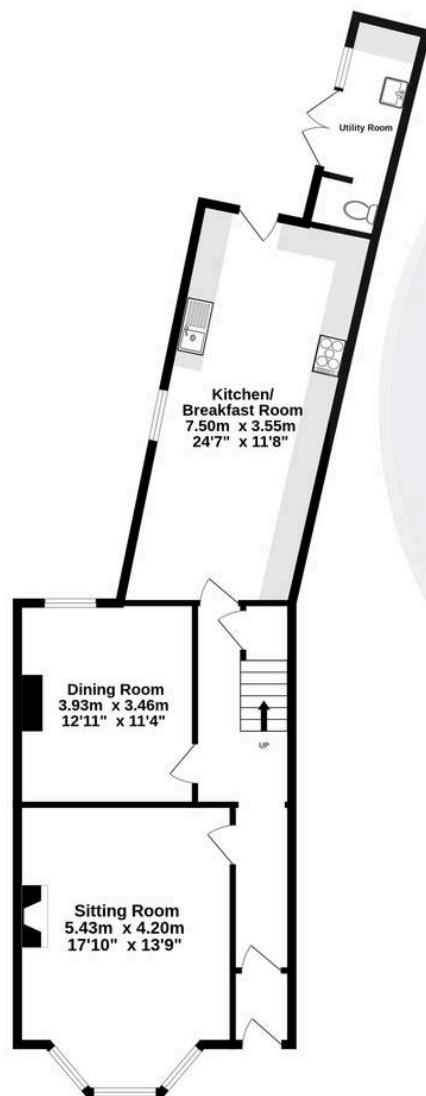
You can include any text here. The text can be modified upon generating your brochure.



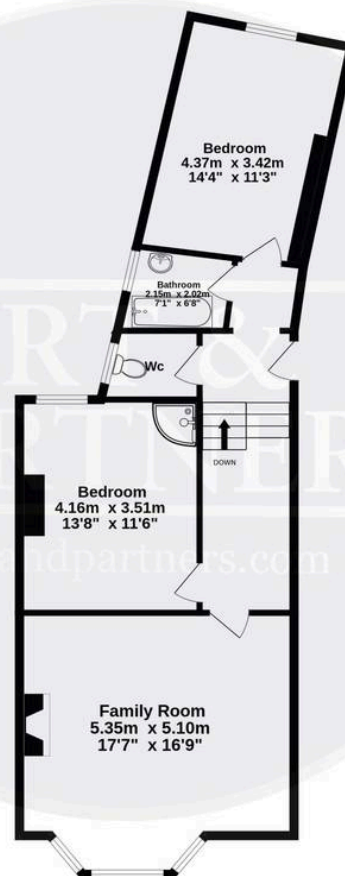
You can include any text here. The text can be modified upon generating your brochure.



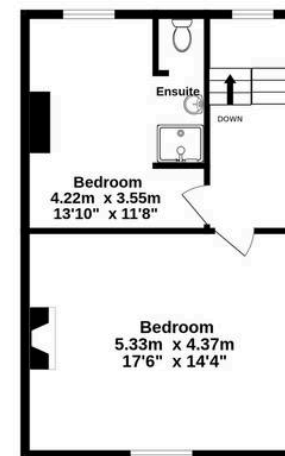
Ground Floor
78.4 sq.m. (844 sq.ft.) approx.



1st Floor
69.8 sq.m. (751 sq.ft.) approx.



2nd Floor
44.7 sq.m. (481 sq.ft.) approx.



TOTAL FLOOR AREA : 192.8 sq.m. (2076 sq.ft.) approx.

Whilst every attempt has been made to ensure the accuracy of the floorplan contained here, measurements of doors, windows, rooms and any other items are approximate and no responsibility is taken for any error, omission or mis-statement. This plan is for illustrative purposes only and should be used as such by any prospective purchaser. The services, systems and appliances shown have not been tested and no guarantee as to their operability or efficiency can be given.

Made with Metropix ©2024

