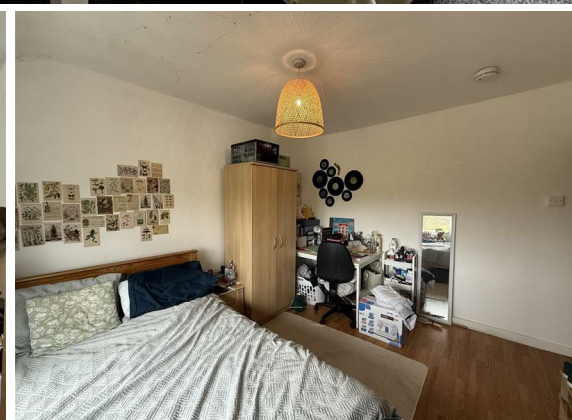




**Ffriddoedd Road,  
Bangor  
4 Bed  
House  
£95 Per Week**



**VARCITY  
LIVING**  
Sales | Lettings





TOTAL FLOOR AREA: 980 sq ft (91.1 sq.m.) approx.  
 Whilst every attempt has been made to ensure the accuracy of the floorplans contained here, measurements of doors, windows, rooms and any other items are approximate and no responsibility is taken for any error, omission or mis-statement. This plan is for illustrative purposes only and should be used as such by any prospective purchaser. The services, systems and appliances shown have not been tested and no guarantee as to their operability or efficiency can be given.  
 Made with Metagen 02/09

This four bedroom property is located just slightly more upward on Ffriddoed Road, almost directly opposite to the Ffriddoedd halls site, for those who aren't ready to leave Bar Uno behind. Situated in Upper Bangor, this property benefits from close proximity to various university buildings, including Main Arts, as well as a wide range of local amenities such as bars, restaurants, cafes, retail shops, and conveniently Morrisons just at the bottom of the road.

The ground floor features a spacious social space that can be used as living room or games room etc, a double bedroom, a dining room and a kitchen at the rear. The first floor includes a bathroom with a corner bathtub and overhead shower, a WC, a sink basin, two double bedrooms, and a single bedroom. All bedrooms are fully furnished with a bed, wardrobe, desk and chair.

The private parking and large garden are highly rare and sought after for the Bangor area. As well as conveniently being in Upper Bangor, we expect this property to be a number one choice on a lot of student's favourite properties list.

## CONTACT

1 College Road  
 Bangor  
 Gwynedd  
 LL57 2AN

E: [sales@varcityltd.com](mailto:sales@varcityltd.com)  
 T: 01248 719254  
[www.varcityliving.co.uk](http://www.varcityliving.co.uk)

- Price per person
- Double bed(s)
- Private parking
- Washing machine
- Add all bills option
- Fully managed property
- Garden

