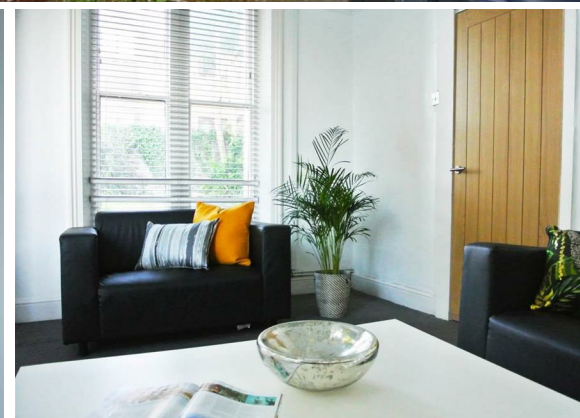
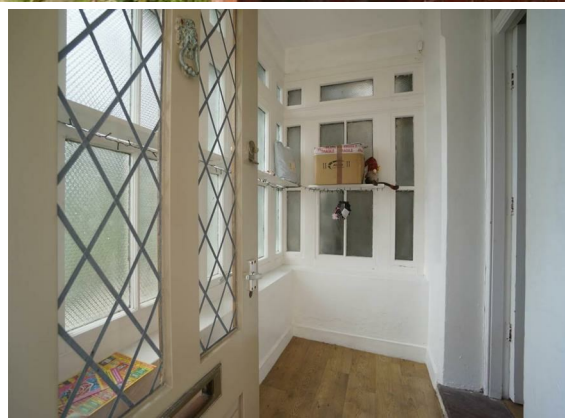




**Craig Y Don,
Bangor
6 Bed
House**

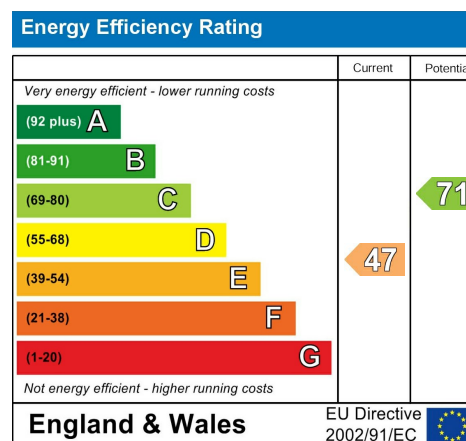
**Asking Price
£293,000**



**VARCITY
LIVING**
Sales | Lettings



- Established 6 Bed HMO In Upper Bangor
- Tenants in situ - income £34,224
- Tenants secured for academic year 25/26 - income £35,800
- Close Proximity to University Buildings
- Sought After Student Area
- Driveway Parking
- Central Heating



Spacious six bedroom HMO located in the thriving student area of upper Bangor, home of the main university campus, Main Arts.

17 Craig-Y-Don Road has a consistent track record of full student occupation, with a 24/25 contract in place worth £34,224 and a secured contract for academic year 25/26 worth £35,800. This offers an investor great long term investment potential, given the buoyancy of the local student lettings market.

Comprising of six fully furnished bedrooms, each with a bed, mattress, study desk with chair, wardrobe and chest of drawers, all included in the sale price. Within the living room are two sofas and a coffee table. To the front of the property, occupants benefit from a private driveway parking space as well as a freshly painted, large porch entrance. To the rear of the property is an open yard, well suited for outdoor seating space and BBQ's.

Positioned a stone throw away from many local amenities including bars, restaurants, cafes, supermarket and independent retails stores.

CONTACT

1 College Road
Bangor
Gwynedd
LL57 2AN

E: sales@varcityltd.com
T: 01248 719254
www.varcityliving.co.uk



**VARCITY
LIVING**
Sales | Lettings