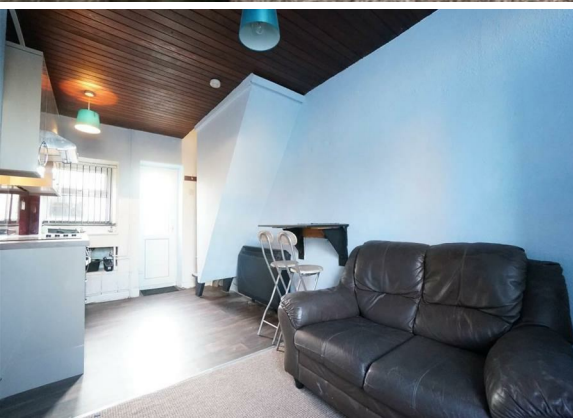


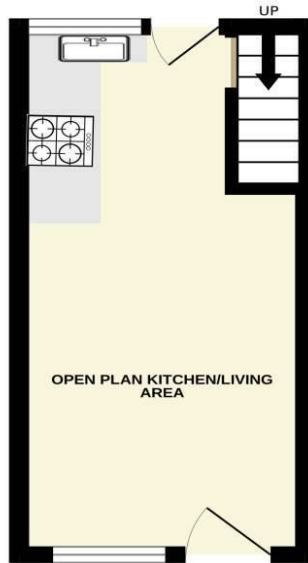


**Church Street,
Bangor**
**1 Bed
House**
**Offers Over
£92,500**

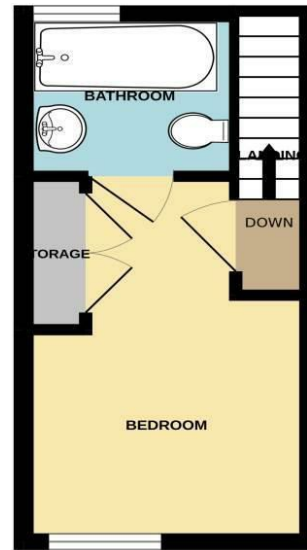


**VARCITY
LIVING**
Sales | Lettings

GROUND FLOOR
155 sq.ft. (14.4 sq.m.) approx.

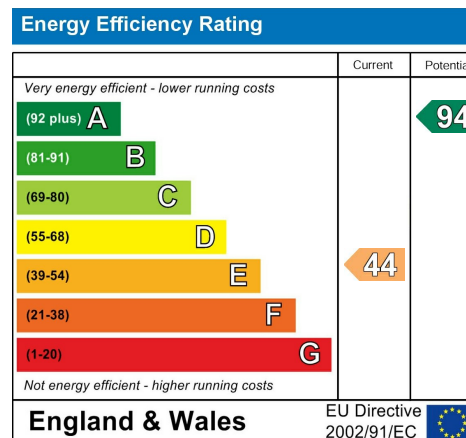


1ST FLOOR
155 sq.ft. (14.4 sq.m.) approx.



TOTAL FLOOR AREA : 311 sq.ft. (28.9 sq.m.) approx.
Whilst every attempt has been made to ensure the accuracy of the floorplan contained here, measurements of doors, windows, rooms and any other items are approximate and no responsibility is taken for any error, omission or mis-statement. This plan is for illustrative purposes only and should be used as such by any prospective purchaser. The services, systems and appliances shown have not been tested and no guarantee as to their operability or efficiency can be given.
Made with Metropix ©2022

- Freehold Property
- No Chain
- Open Plan Kitchen/Living Area
- End of Terrace
- Ideal For First Time Buyers or Investors
- Rear Yard



A unique and well laid out, one bedroom end of terrace property, suited to an owner occupier or investor.

The property has consistently attracted rental occupants in the past, underscoring the strong demand for one-bedroom rentals in the area. Current occupant in situ until 30th June 2025, with the option to purchase with vacant possession from July 2025.

The property features a spacious open-plan kitchen/living area, double bedroom, and a bathroom complete with a bathtub/shower, WC, and sink. To be sold with the option of all furniture and fittings included.

Situated just a short distance from Bangor train station and the A55 dual-carriageway, the location provides excellent transport links for easy access in and out of the city. Bangor High Street, only a ten-minute walk away, offers a range of local amenities including cafes, restaurants, bars, convenience stores, and supermarkets, making it a highly convenient spot for residents.

CONTACT

1 College Road
Bangor
Gwynedd
LL57 2AN

E: sales@varcityltd.com
T: 01248 719254
www.varcityliving.co.uk



**VARCITY
LIVING**
Sales | Lettings