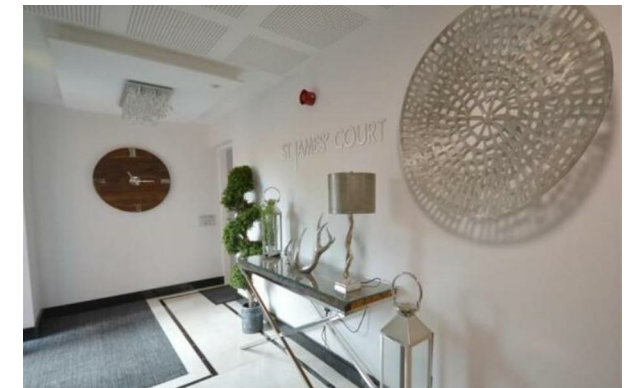


# Horton & Senate



Apartment 21, 331, St. James Court Stratford Road, Shirley,

£1,250 p.m.

- Two Bedroom Apartment
- Bathroom And En Suite
- EPC B
- furnished
- Modern Neutral Décor
- Council Tax Band C
- Open Plan Kitchen Diner
- Allocated Parking
- Available January

# Apartment 21, 331, St. James Court Stratford Road, Shirley B90 3BL

This vibrant apartment offers the perfect blend of modern comfort and convenience. Residents will enjoy easy access to local cafes, restaurants, and shopping destinations. With spacious interiors, contemporary amenities, and a welcoming atmosphere, this apartment promises a lifestyle of both relaxation and excitement. Allocated parking space. Available January

2

2

1

B

Council Tax Band: C







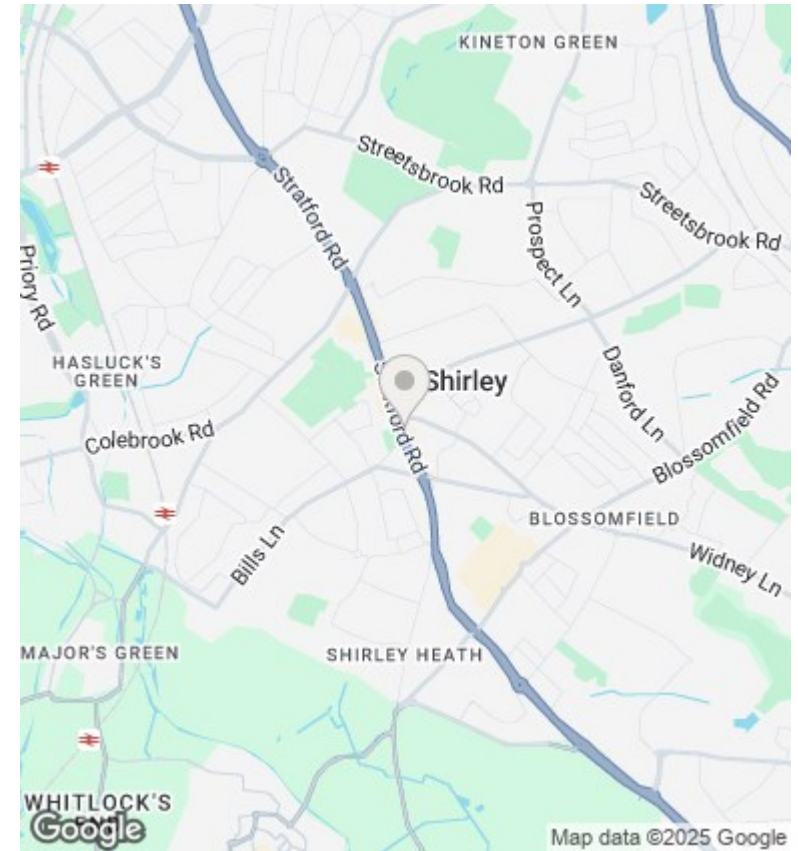


## Directions

## Viewings

Viewings by arrangement only. Call 01564 773200 to make an appointment.

## Council Tax Band



Energy Efficiency Rating		
	Current	Potential
<i>Very energy efficient - lower running costs</i>		
(92 plus) <b>A</b>		
(81-91) <b>B</b>	84	
(69-80) <b>C</b>		
(55-68) <b>D</b>		
(39-54) <b>E</b>		
(21-38) <b>F</b>		
(1-20) <b>G</b>		
<i>Not energy efficient - higher running costs</i>		
<b>England &amp; Wales</b>	EU Directive 2002/91/EC	