

Horton & Senate



1002 Rotunda New Street, Birmingham, B2 4PE

£1,150

- 10th Floor Apartment
- Bathroom with Shower
- Council Tax Band C
- Available End September
- 1 Double Bedroom
- Kitchen with Integrated Appliances
- EPC Rating D
- Lounge/Diner/Kitchen
- Electric Heating
- Furnished

1002 Rotunda New Street, Birmingham B2 4PE

Horton & Senate Property Services are pleased to offer this larger style one double bedroom apartment located on the tenth floor of the iconic Rotunda building in Birmingham city centre. Benefiting from double glazing, electric heating and comprising of secure communal entrance with lift and stair case to all floors, entrance hallway with fitted storage cupboard, large lounge/diner with views across Birmingham, fitted kitchen area with integrated appliances and breakfast bar, concealed sliding door into bedroom, double bedroom with fitted wardrobe and access into Jack & Jill style bathroom.

1

1

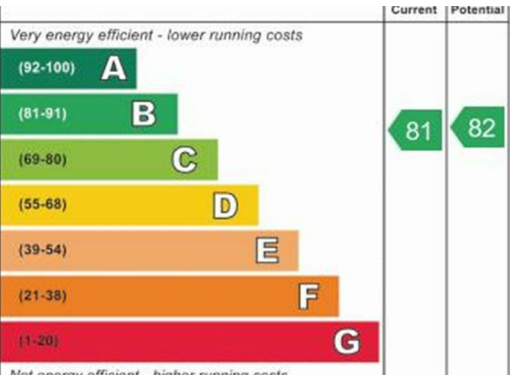
1

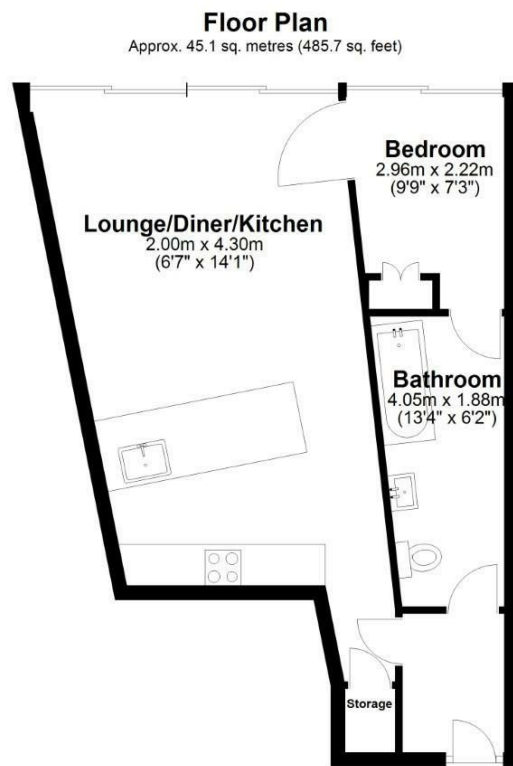
C

Council Tax Band: E

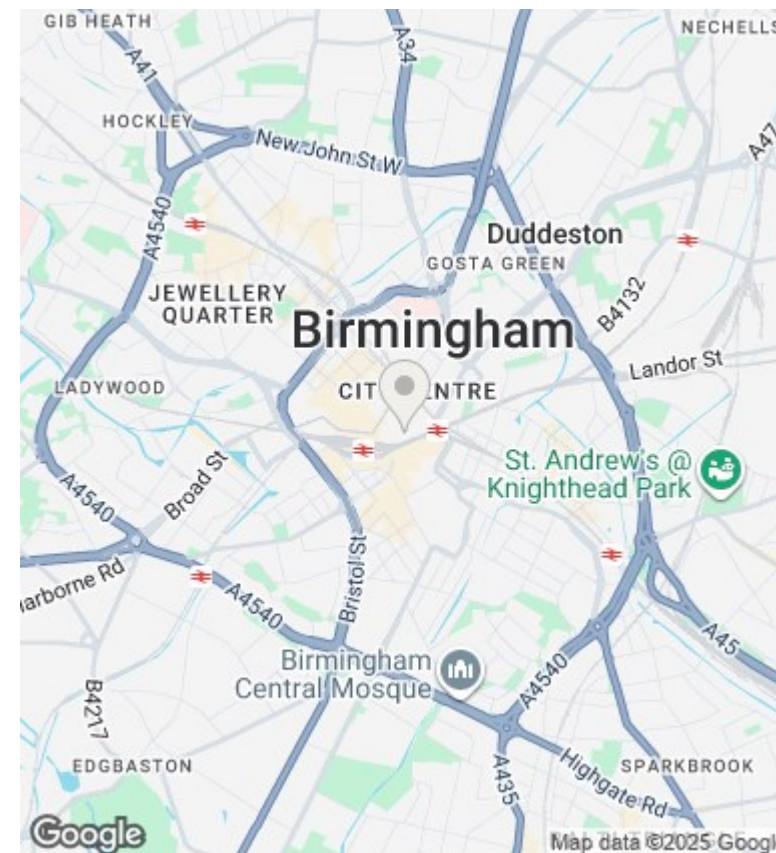








Total area: approx. 45.1 sq. metres (485.7 sq. feet)



Directions

Viewings

Viewings by arrangement only. Call 01564 773200 to make an appointment.

Council Tax Band

B

Energy Efficiency Rating		
	Current	Potential
Very energy efficient - lower running costs		
(92 plus) A		
(81-91) B		
(69-80) C	80	83
(55-68) D		
(39-54) E		
(21-38) F		
(1-20) G		
Not energy efficient - higher running costs		
EU Directive 2002/91/EC		
England & Wales		