

# Horton & Senate



## 64 Honduras Wharf Summer Lane, Birmingham, B19 3SR

£870

- 1 Double Bedroom
- Gas Central Heating
- Council Tax Band B
- Unfurnished
- 2nd Floor Apartment
- Lounge/Diner with Balcony
- EPC Rating B
- Close to Birmingham City Centre
- Bathroom with Shower
- Available Early July

49a Station Road, Knowle, Solihull, West Midlands, B93 0HN  
01564 773200

[info@senateproperty.co.uk](mailto:info@senateproperty.co.uk)

# 64 Honduras Wharf Summer Lane, Birmingham B19 3SR

Horton & Senate Property Services are pleased to offer this one double bedroom second floor apartment. Located close to Birmingham City Centre, Snow Hill train station, local amenities and with M6 Motorway link close by. Benefiting from double glazing, gas central heating and comprising of secure communal entrance with intercom system, communal staircase and lift to all floors, entrance hallway, lounge/diner with access onto balcony, fitted kitchen with integrated electric oven, four ring gas hob, fridge with freezer box, luxury fitted bathroom with shower over bath, walk in storage cupboard housing gas central heating boiler and washing machine.

1 1 1 B

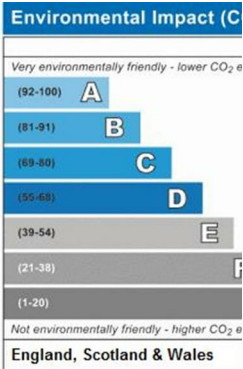
Council Tax Band: B





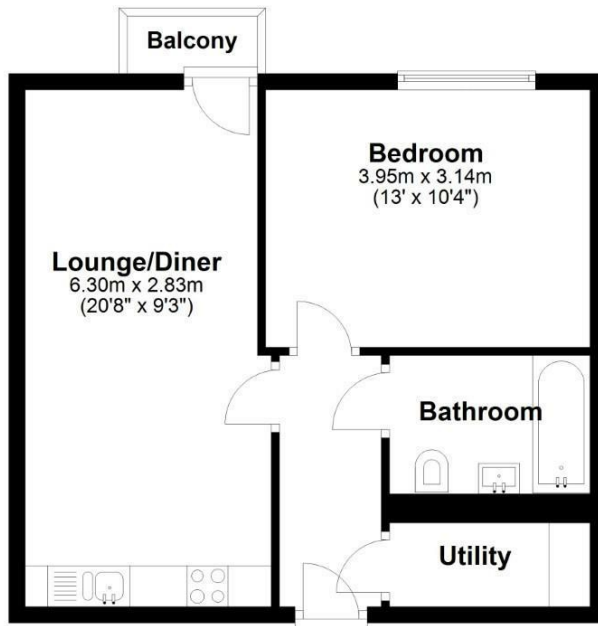






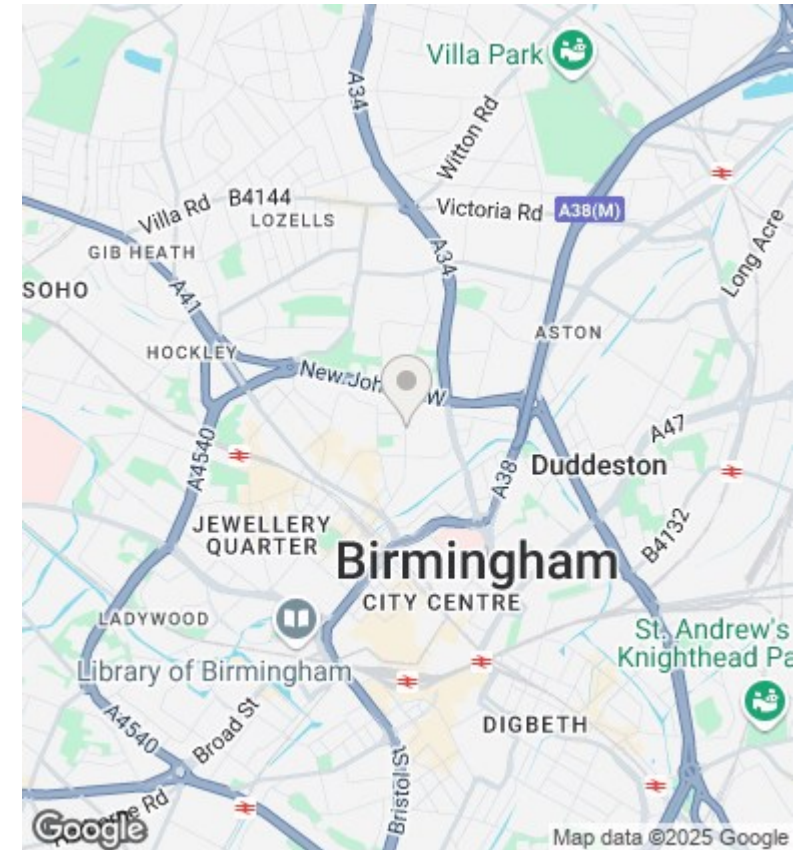
## Floor Plan

Approx. 43.4 sq. metres (467.3 sq. feet)



Total area: approx. 43.4 sq. metres (467.3 sq. feet)

This floor plan is not to scale and is for illustration/marketing purposes of Senate Property Services Ltd.  
Plan produced using PlanUp.



## Directions

## Viewings

Viewings by arrangement only. Call 01564 773200 to make an appointment.

## Council Tax Band

B

Energy Efficiency Rating		
	Current	Potential
Very energy efficient - lower running costs		
(92 plus) <b>A</b>		
(81-91) <b>B</b>	82	82
(69-80) <b>C</b>		
(55-68) <b>D</b>		
(39-54) <b>E</b>		
(21-38) <b>F</b>		
(1-20) <b>G</b>		
Not energy efficient - higher running costs		
EU Directive 2002/91/EC		
England & Wales		