

Horton & Senate



77 St. Lawrence Close, Knowle, Solihull, B93 0EU

£1,295

- Top Floor Apartment
- Refitted Bathroom with Shower
- EPC Rating B
- 2 Double Bedrooms
- Gas Central Heating
- Available April
- Garage in Separate Block
- Council Tax Band C
- Unfurnished

77 St. Lawrence Close, Solihull B93 0EU

Horton & Senate are pleased to offer this two double bedroom Top floor apartment with garage in separate block. Located close to local amenities on Knowle, High Street within easy access to Knowle park, local Schools and with M42 motorway link close by. Benefiting from double glazing, gas central heating and comprising of secure communal entrance with intercom system, communal staircase to all floors, entrance hallway with fitted storage, lounge/diner, refitted kitchen, refitted bathroom with shower and bedroom one with fitted wardrobes.

2

1

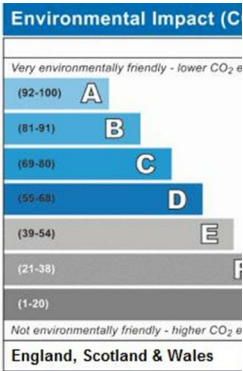
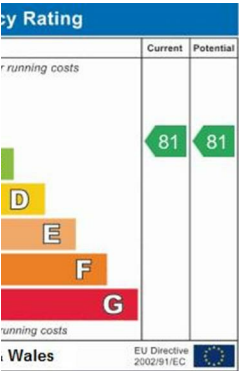
1

B

Council Tax Band: C

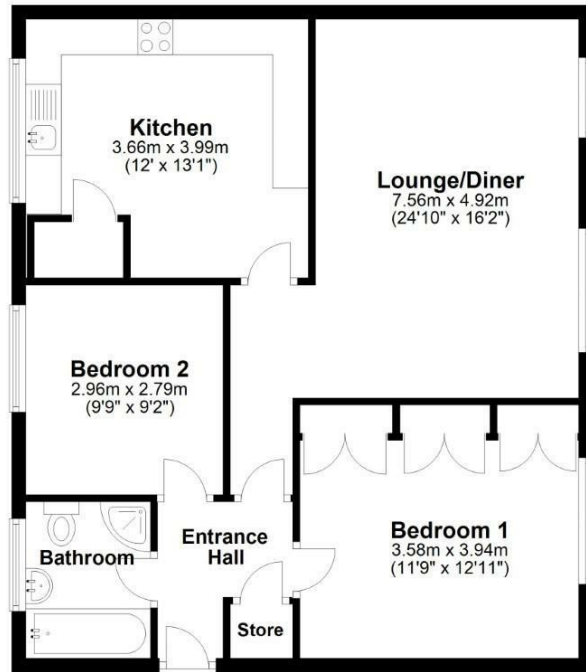






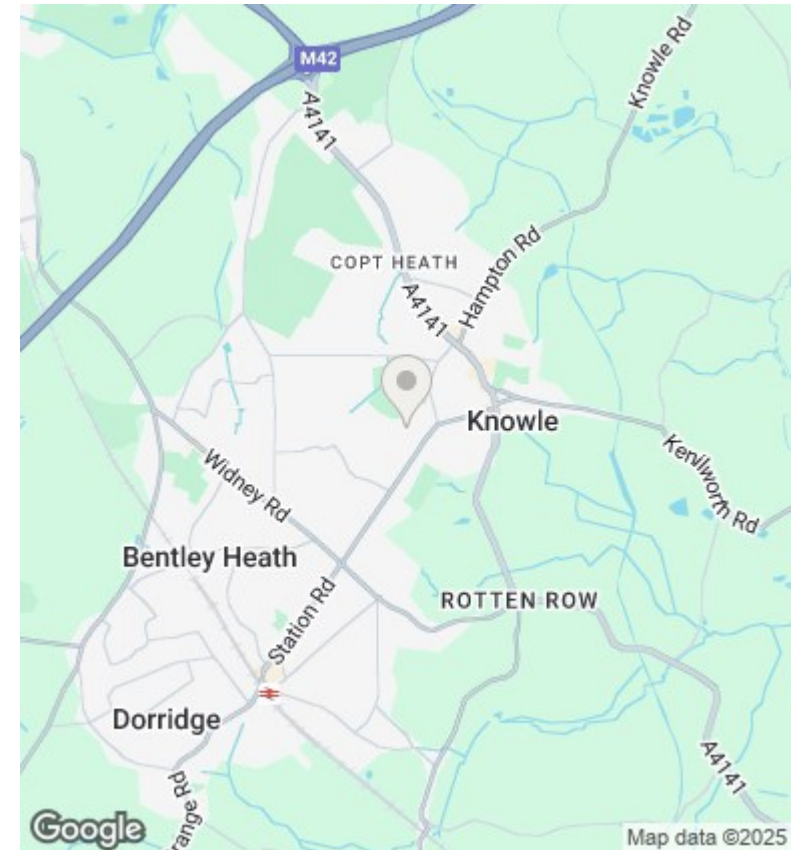
Floor Plan

Approx. 69.8 sq. metres (751.0 sq. feet)



Total area: approx. 69.8 sq. metres (751.0 sq. feet)

This floor plan is not to scale and is for illustration/marketing purposes of Senate Property Services Ltd.
Plan produced using PlanUp.



Directions

Viewings

Viewings by arrangement only. Call 01564 773200 to make an appointment.

Council Tax Band

B

Energy Efficiency Rating		
	Current	Potential
Very energy efficient - lower running costs		
(92 plus) A		
(81-91) B	81	81
(69-80) C		
(55-68) D		
(39-54) E		
(21-38) F		
(1-20) G		
Not energy efficient - higher running costs		
England & Wales EU Directive 2002/91/EC		