

Horton & Senate



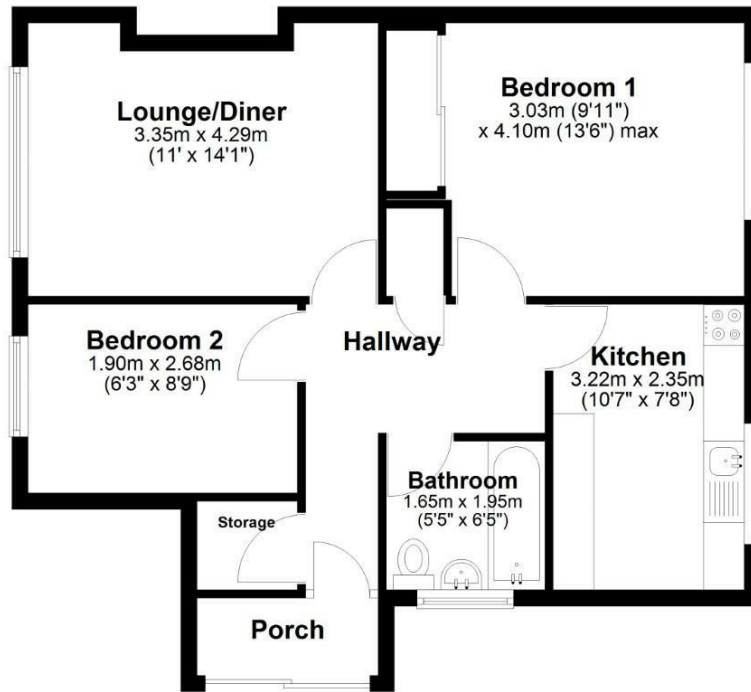
25 Mockley Wood Road, Knowle, Solihull, B93 9NF

Offers in the region of £235,000

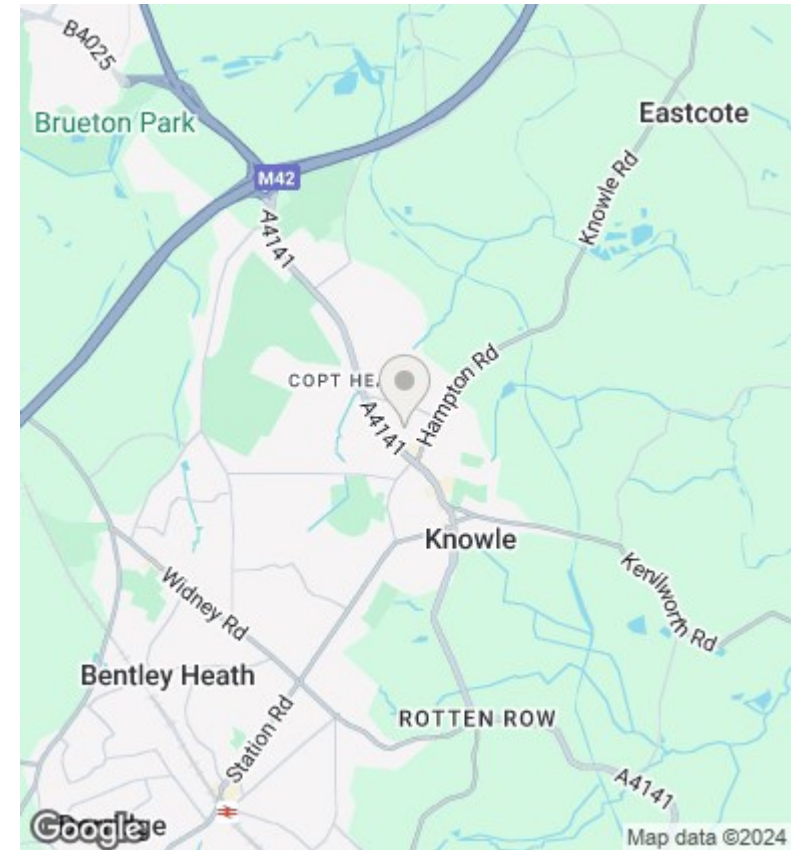
- Ground Floor Maisonette
- Rear Garden
- Kitchen
- 2 Bedrooms
- Double Glazed
- Lounge/Diner
- Gas Central Heating
- Shower Room

Floor Plan

Approx. 64.0 sq. metres (688.6 sq. feet)



Total area: approx. 64.0 sq. metres (688.6 sq. feet)



Directions

Viewings

Viewings by arrangement only. Call 01564 773200 to make an appointment.

Council Tax Band

C

EPC Rating:

D

Energy Efficiency Rating		Current	Potential
<i>Very energy efficient - lower running costs</i>			
(92 plus) A			
(81-91) B			
(69-80) C			
(55-68) D		64	74
(39-54) E			
(21-38) F			
(1-20) G			
<i>Not energy efficient - higher running costs</i>			
England & Wales		EU Directive 2002/91/EC	