

# Horton & Senate



8 Alderwood Place Princes Way, Solihull, B91 3HX

£269,500

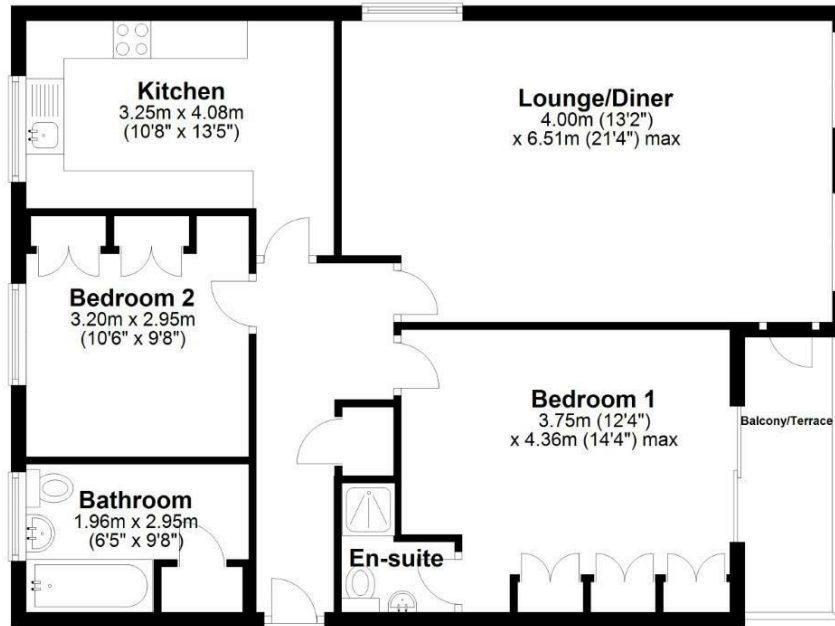
- Ground Floor Apartment
- En-suite Shower Room
- Gas Central Heating
- 2 Double Bedrooms
- Refitted Kitchen
- Patio/Terrace
- Garage in Separate Block
- Double Glazed

49a Station Road, Knowle, Solihull, West Midlands, B93 0HN  
01564 773200

[info@senateproperty.co.uk](mailto:info@senateproperty.co.uk)

### Ground Floor

Approx. 78.7 sq. metres (847.4 sq. feet)



Total area: approx. 78.7 sq. metres (847.4 sq. feet)

This floor plan is not to scale and is for illustration/marketing purposes of Senate Property Services Ltd. Plan produced using PlanUp.



### Directions

### Viewings

Viewings by arrangement only. Call 01564 773200 to make an appointment.

### Council Tax Band

C

### EPC Rating:

C

Energy Efficiency Rating		Current	Potential
Very energy efficient - lower running costs			
(92 plus)	A		
(81-91)	B		
(69-80)	C	71	76
(55-68)	D		
(39-54)	E		
(21-38)	F		
(1-20)	G		
Not energy efficient - higher running costs			
<b>England &amp; Wales</b>		EU Directive 2002/91/EC	