

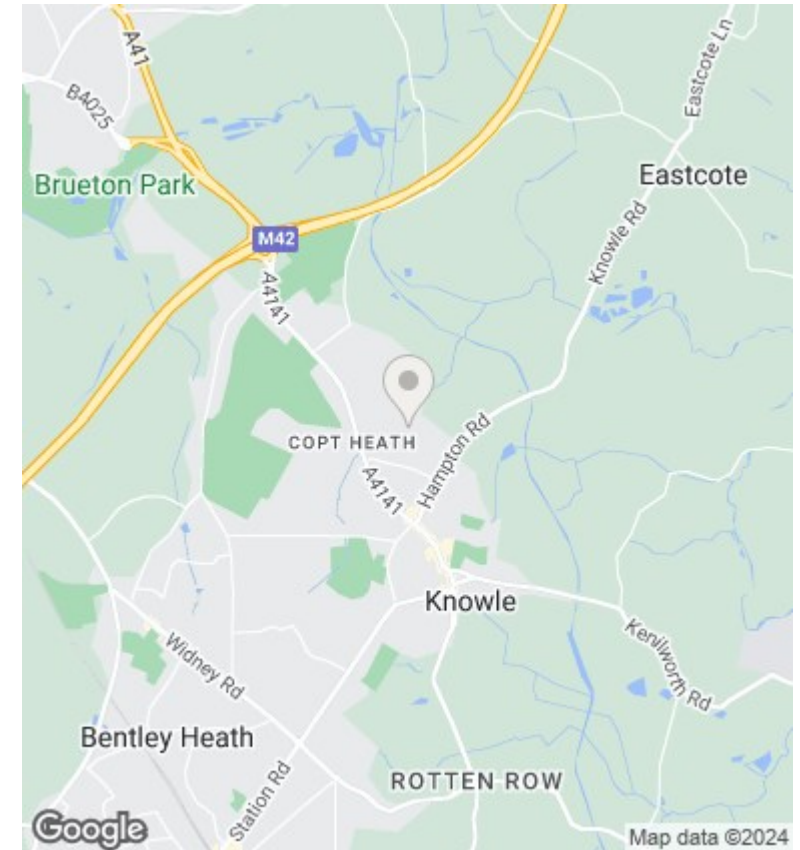
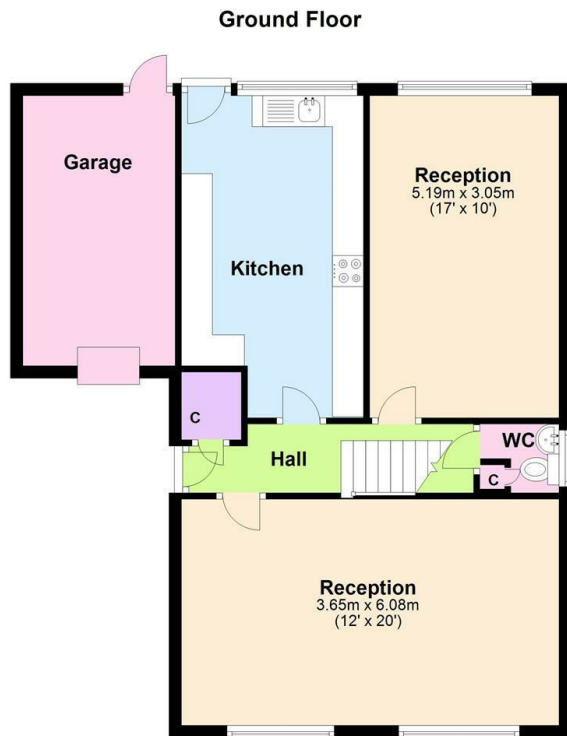
Horton & Senate



24 Alveston Grove, Knowle, Solihull, B93 9NX

Price £575,000

- No Chain!
- Single Garage
- Downstairs WC
- 4 Bedrooms
- Two Receptions
- Off Road Parking
- Detached
- Large Kitchen



Directions

Viewings

Viewings by arrangement only. Call 01564 773200 to make an appointment.

Council Tax Band

EPC Rating:

Energy Efficiency Rating		
	Current	Potential
<i>Very energy efficient - lower running costs</i>		
(92 plus) A		
(81-91) B		
(69-80) C		
(55-68) D		
(39-54) E		
(21-38) F		
(1-20) G		
<i>Not energy efficient - higher running costs</i>		
England & Wales	EU Directive 2002/91/EC	