

GOLDSWORTH PLACE



WOKING

**GOLDSWORTH PLACE IS A SIGNATURE BUILDING BEAUTIFULLY COMBINING DESIGN AND INNOVATION TO CREATE WORKING ENVIRONMENTS THAT INSPIRE AND EXCITE. LARGE OPEN FLOOR PLATES AND FLOOR TO CEILING GLAZING DRAWS NATURAL LIGHT TO THE HEART OF THE BUILDING PROVIDING UPLIFTING AND STIMULATING WORK SPACES.**

Enriching the workspace has proven to be a catalyst in creating productive offices and Goldsworth Place offers this in abundance. Two excellent light and spacious floors totalling 38,464 square feet are available now. Extensive refurbishment of the available floors, with an extended reception including new café and break-out areas, all deliver an impressive arrival experience.







RECEPTION HALL ENTRANCE





RECEPTION HALL





RECEPTION HALL BREAK-OUT SEATING AREAS





RECEPTION HALL CAFE AREA

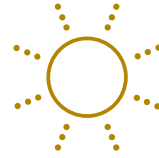
# THE PLACE TO BE



**NEW RECEPTION, CAFÉ  
& BREAK-OUT SPACE**



**UNRIVALLED TOWN CENTRE  
PARKING RATIO - 1:247 SQ FT**



**ALLOCATED TERRACE SPACE  
ON EACH FLOOR**



**TARGET EPC B  
RATING**



**CANALSIDE WALKS &  
CYCLE ROUTES**



**WORKING TO LONDON,  
WATERLOO 23 MINUTES**



**70 SECURE CYCLE  
STORAGE SPACES**



**BASEMENT SHOWERS  
& CHANGING**



**GET READY ROOM  
AND LOCKERS**



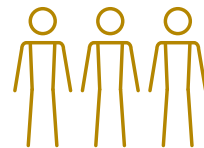
**FULLY REFINISHED  
WCs**



**3 DDA COMPLIANT  
LIFTS**



**HIGHLY EFFICIENT  
AIR CONDITIONING**



**OCCUPANCY DENSITIES  
1:8 SQ METRES**



**FLOOR TO CEILING  
GLAZING**



**WIREScore  
GOLD**



# RIGHT TIME — RIGHT PLACE

The transformation of Woking is rapidly taking shape and the completion of the new Victoria Square development will see a 21st century high quality destination delivered for the South East. This is Woking's defining moment and the investment and ambition for the town is evident at every turn. The regeneration of the Jubilee Square retail area has recently been completed and Victoria Square will add 75,000 square feet of new shopping and eating experiences in two large and impressive public plazas. The development will also include a 189 room Hilton hotel, featuring a restaurant, café, and 700 square metres of function rooms and meeting space.

There will also be several bars including a Sky Bar on the 22nd floor which will offer commanding views across Surrey and towards London. Attracting the very best people and providing working environments they can excel in is at the core of Goldsworth Place thinking. Award winning architects TP Bennett have optimised the reception and outside areas to create high quality break space that includes a café and break-out areas. The fresh new changing facilities mean employees can make use of immediate access to the Saturn Trail.









# PLACE IN THE SUN

## IMPRESSIVE TERRACES — LIGHT, BRIGHT AND AIRY FLOORS

Both first and second floors feature excellent terrace and outside space. Sharing a coffee, catching some fresh air or simply breathing in the view can re-charge the day. The south facing aspects catch hours of unbroken daylight and the large glazed façades soak up summer sun – perfect for informal meetings as well as those all-important staff and client events.



# WOKING CENTRAL



**GOLDSWORTH PLACE**

## RETAIL

- 1 The Peacocks Retail Centre
- 2 Wolsey Place Retail Centre
- 3 Jubilee Square
- 4 Market Walk
- 5 Red Car Park

## VENUES

- 1 The Lightbox
- 2 WWF Living Planet
- 3 Nova Cinema
- 4 New Victoria Theatre
- 5 Anytime Fitness

## CAFES

- 1 Costa Coffee
- 2 Starbucks
- 3 Pret A Manger
- 4 Côte Brasserie
- 5 Caffè Nero
- 6 Gordon Ramsey Street Burger

## BUSINESSES

- 1 KFC
- 2 Fidessa
- 3 Asahi
- 4 McLaren
- 5 Mercer

## HOTELS

- 1 Doubletree By Hilton
- 2 Travelodge
- 3 Premier Inn
- 4 Hilton

## TRAVEL

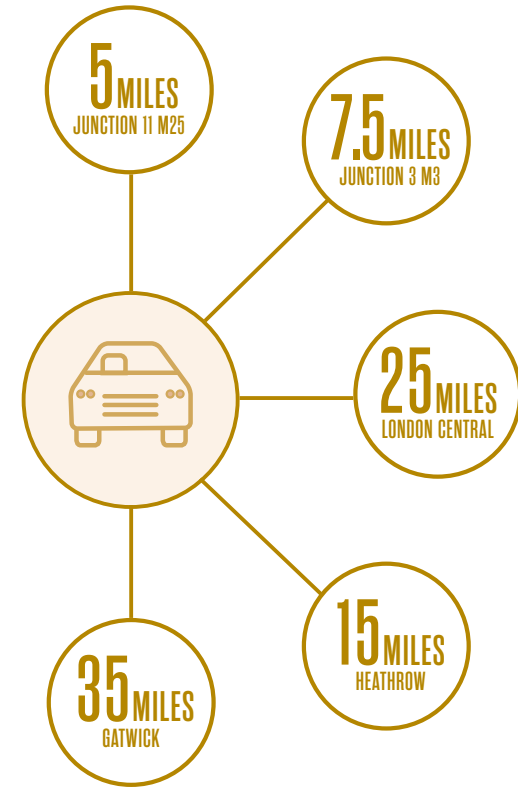
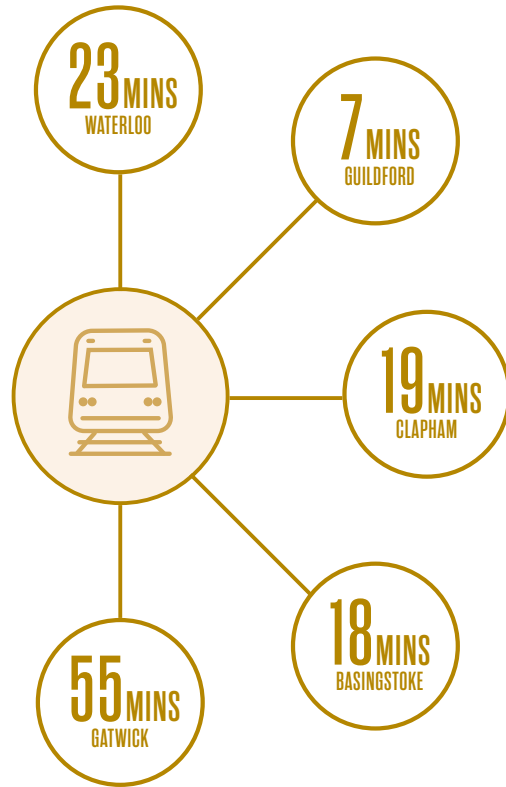
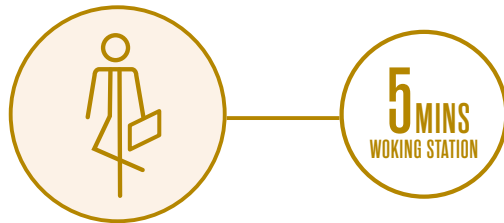
- 1 Basingstoke Canal/Saturn Trail
- 2 Woking Rail Station



# CONNECTED PLACE

## UNRIVALLED ROAD ACCESS & SWIFT RAIL SERVICES TO LONDON

Goldsworth Place is superbly located to enable quick travel around the South East and beyond. Woking rail station is only a short walk via the ground-breaking new Victoria Square and London Waterloo Station (23 minutes journey time) is serviced by 15 trains an hour. The motorway network is easily accessed with both Gatwick and Heathrow airports under an hour's drive time.





JUBILEE SQUARE





1.



2.

THE PLACE TO ABSORB

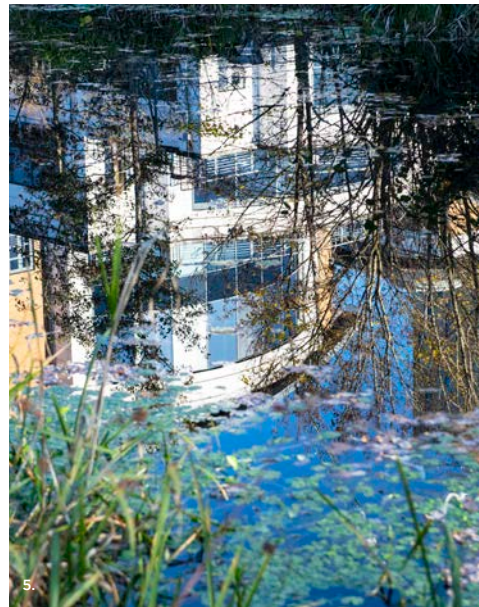
- 1. HG WELLS
- 2. THE LIGHTBOX
- 3. ALEC BEDSER
- 4. WWF LIVING PLANET
- 5. GOLDSWORTH PLACE
- 6. THE MARTIAN



3.



4.



5.



6.





SATURN TRAIL / BASINGSTOKE CANAL



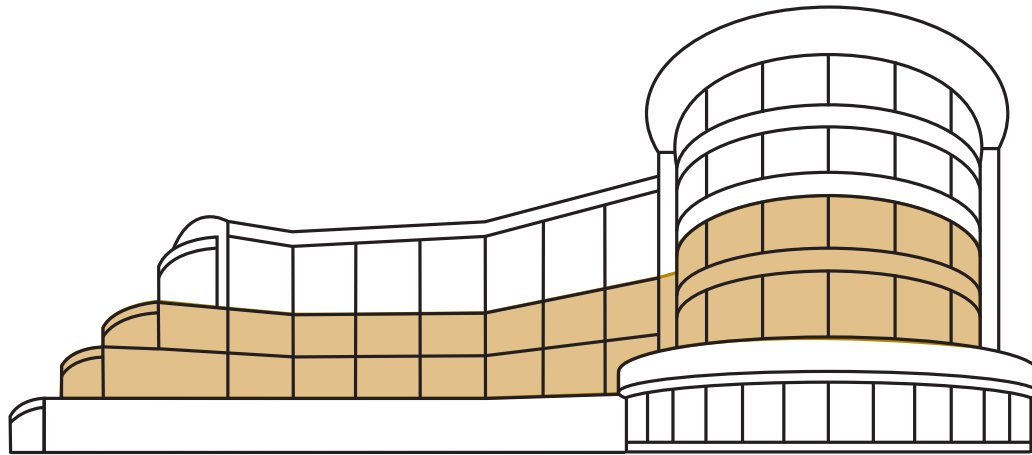


THE PLACE TO MUNCH

1. KIWI & SCOT
2. STREET BURGER
3. MARCIANO LOUNGE
4. RED STONE
5. BEP VIET
6. BACARÓ
7. CÔTE BRASSERIE

# PLAN YOUR PLACE

SECOND FLOOR	19,170 SQ FT / 1,781 SQ M
FIRST FLOOR	19,294 SQ FT / 1,792 SQ M
TOTAL	<u>38,464 SQ FT / 3,573 SQ M</u>

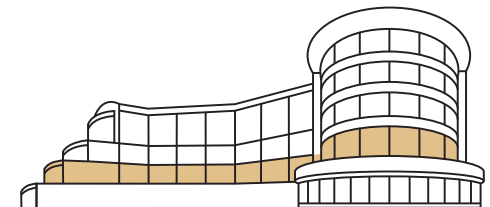
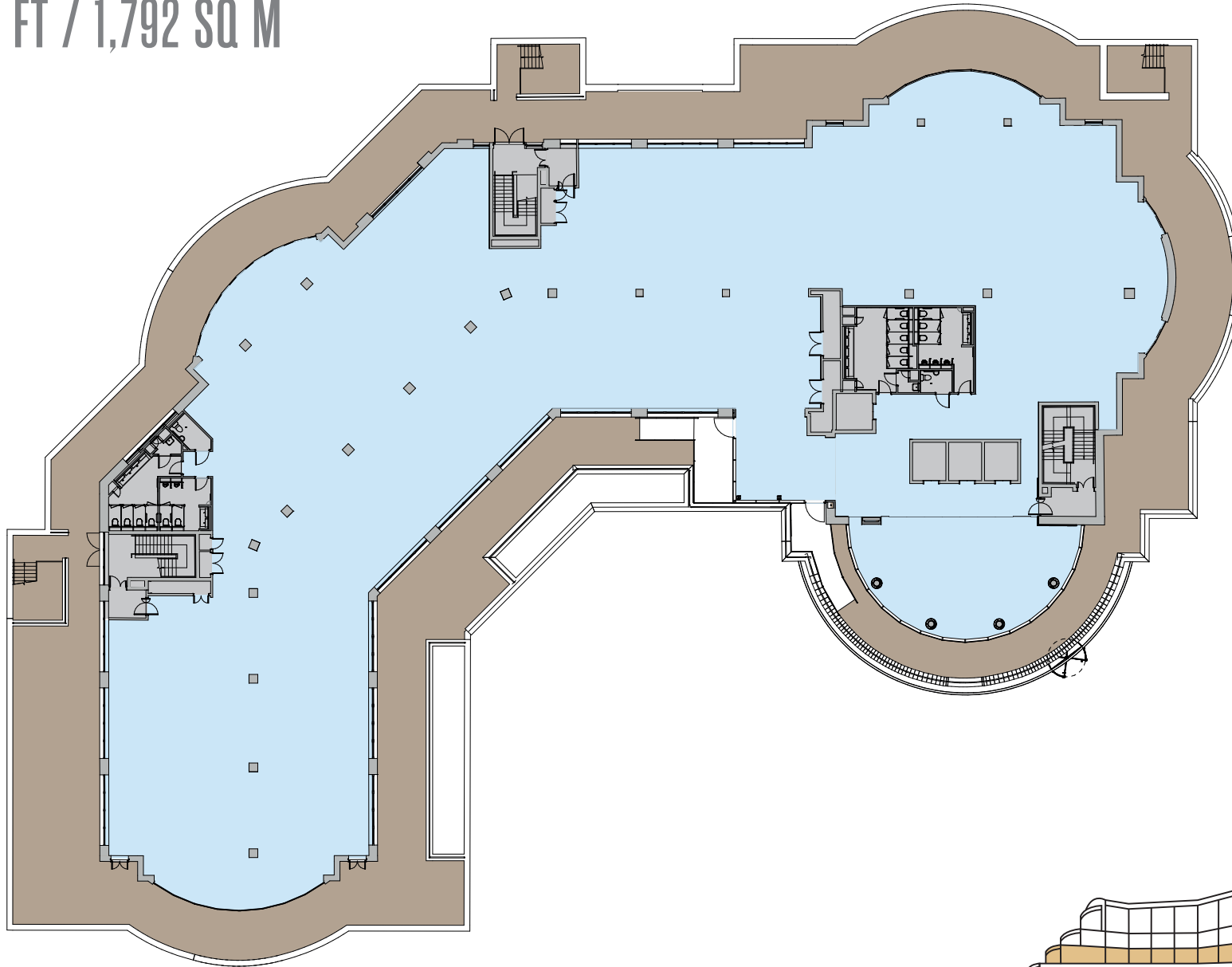
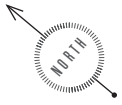


4	LET TO CAPGEMINI UK PLC
3	LET TO CAPGEMINI UK PLC
2	<b>19,170 SQ FT / 1,781 SQ M (PARKING - 77 SPACES)</b>
1	<b>19,294 SQ FT / 1,792 SQ M (PARKING - 78 SPACES)</b>
G	RECEPTION / CAFE



# FIRST FLOOR

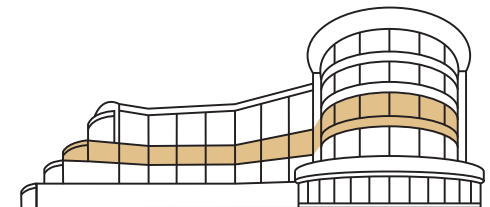
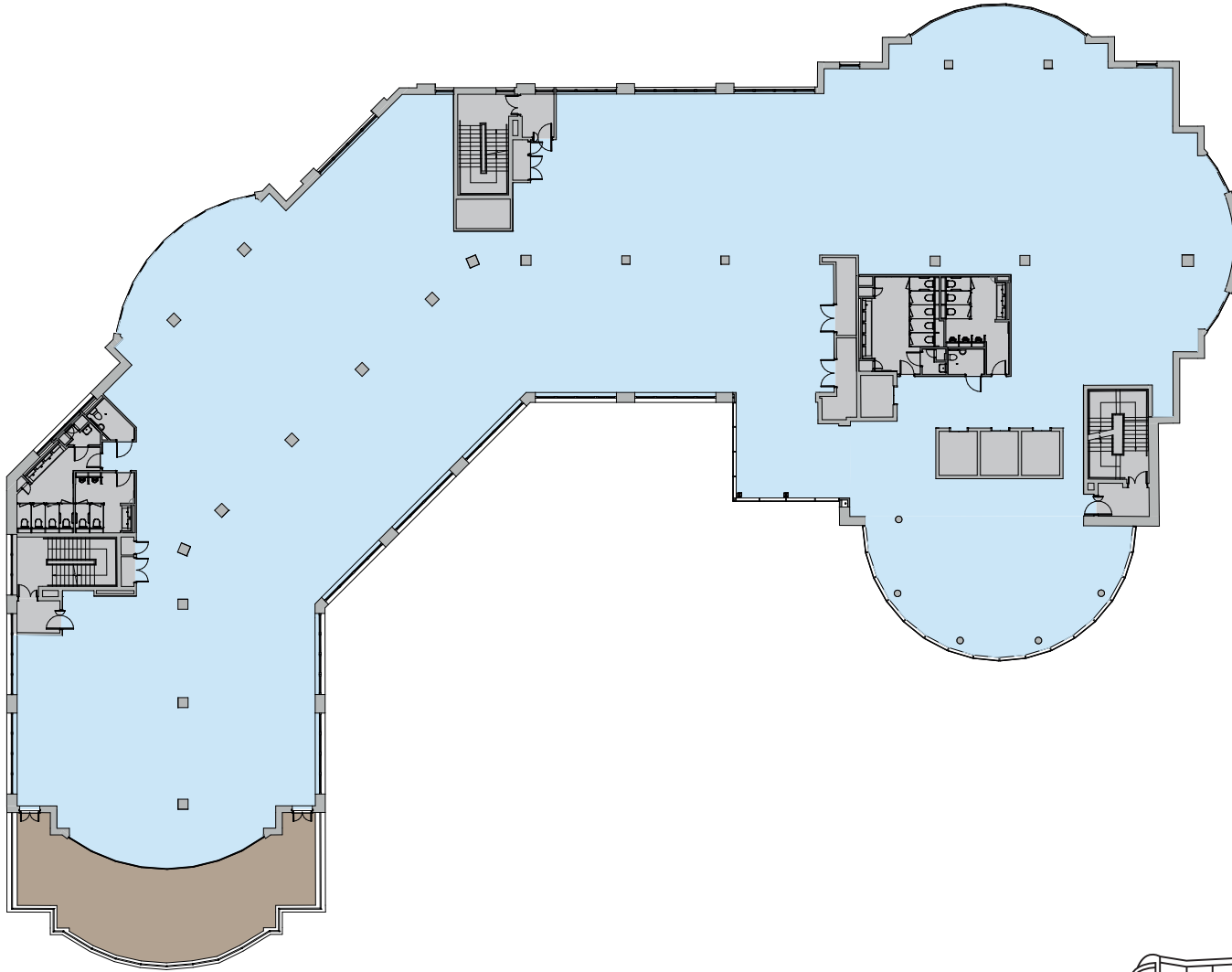
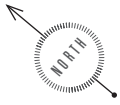
19,294 SQ FT / 1,792 SQ M





# SECOND FLOOR

19,170 SQ FT / 1,781 SQ M







FIRST FLOOR OFFICE





FIRST FLOOR ROOF TERRACES





FIRST FLOOR OFFICE





FIRST FLOOR OFFICE





FIRST FLOOR TERRACE



FIRST FLOOR WCs





SECOND FLOOR OFFICE





SECOND FLOOR OFFICE





BOLTON PLACE

RECEPTION ↑

← CAR PARK  
CYCLE PARKING





SECOND FLOOR OFFICE





CGI OF POTENTIAL FIT OUT



# MOBILE PLACE

Goldsworth Place is surrounded by excellent opportunities to escape the urban and emerge yourself in the rural. The Saturn Walk canalside trail and cycleway runs alongside the building and offers miles of secluded interconnected paths. Easily accessible storage for 70 bikes have been included in the basement parking area with dedicated showers and M/F changing featuring oak lockers and benching.





## OWNER & DEVELOPER

---



**GOLDSWORTHPLACE.COM**

## AGENTS

---



STUART CHAMBERS  
stuart.chambers@savills.com  
+44 7870 999 339

ANDREW WILLCOCK  
awillcock@savills.com  
+44 7870 999 628



SIMON FITCH  
simon.fitch@hurstwarne.co.uk  
+44 7917 531 707

PETER RICHARDS  
peter.richards@hurstwarne.co.uk  
+44 7803 078 011



#### IMPORTANT NOTICE

##### 1. Particulars:

These particulars are not an offer or contract, nor part of one. You should not rely on statements by Savills LLP or Hurst Warne in the particulars or by word of mouth or in writing ("information") as being factually accurate about the property, its condition or its value. Neither Savills LLP or Hurst Warne nor any joint agent has any authority to make any representations about the property, and accordingly any information given is entirely without responsibility on the part of the agents, seller(s) or lessors(s).

##### 2. Photos and CGI's etc:

The photographs and CGI's show only certain parts of the property as they appeared at the time they were taken. Areas, measurements and distances given are approximate only.

##### 3. Regulations etc:

Any reference to alterations to, or use of, any part of the property does not mean that any necessary planning, building regulations or other consent has been obtained. None of the services or appliances have been tested and no warranty is given or is to be implied that they are in working order. A buyer or lessee must find out by inspection or in other ways that these matters have been properly dealt with and that all information is correct. March 2022.

