

# BLOOM HEATHROW LONDON

BUILDING 3

46,000 sq ft coming in Q1 2024

[bloomheathrowlondon.com](https://bloomheathrowlondon.com)



# WELCOME TO YOUR NEW NATURAL HABITAT

WELCOME TO  
BLOOM  
HEATHROW  
LONDON



# IT'S NOT JUST HOW YOU WORK IT'S HOW YOU FEEL

Bloom is much more than a collection of different companies it's a community where connections are made. We are designed for people who want a better work/life balance.

We provide fitness classes, sports clubs, charity fundraisers, family days, book clubs, BBQs, pop-up outdoor cinemas and screenings of major sporting events.

Our on-site Lifestyle Manager will help put you in touch with everything happening on the campus. They're your front-of-house, concierge and first point of contact. They're also here to organise a year-round programme of events. Besides all the fun stuff like BBQs and outdoor cinemas, there'll also be business networking, guest speakers, client entertainment and special interest days.



B3 GROUND FLOOR



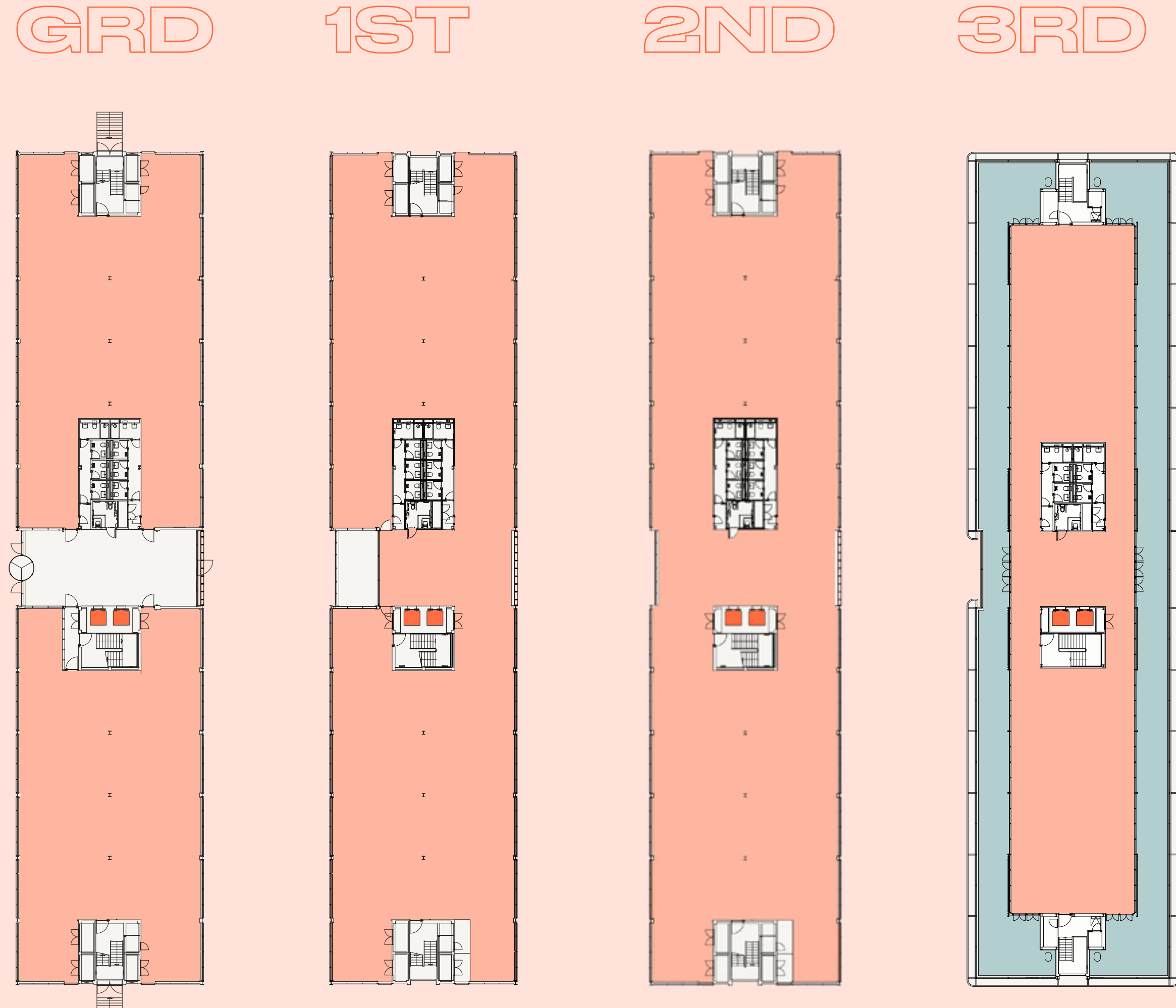
# B3

**Building 3 is being refurbished and extended with views down to the lake.**

- > Remodelled reception
- > Large interconnected pavilion
- > Roof terrace with panoramic views
- > VAV air conditioning
- > Raised access floors
- > Contemporary exposed ceiling with LED lighting
- > Refurbished WCs and showers
- > Two passenger lifts
- > BMS control system
- > 174 parking spaces with a ratio of 1:255 sq ft
- > Targeting BREEAM Excellent, EPC rating A and WiredScore Platinum or Gold

FLOOR	SQ FT	SQ M
Reception (Ground Floor)	1,345	125
Ground Floor	11,711	1,088
1st	12,120	1,126
2nd	13,153	1,222
3rd	7,363	684
<b>Total</b>	<b>45,692</b>	<b>4,245</b>

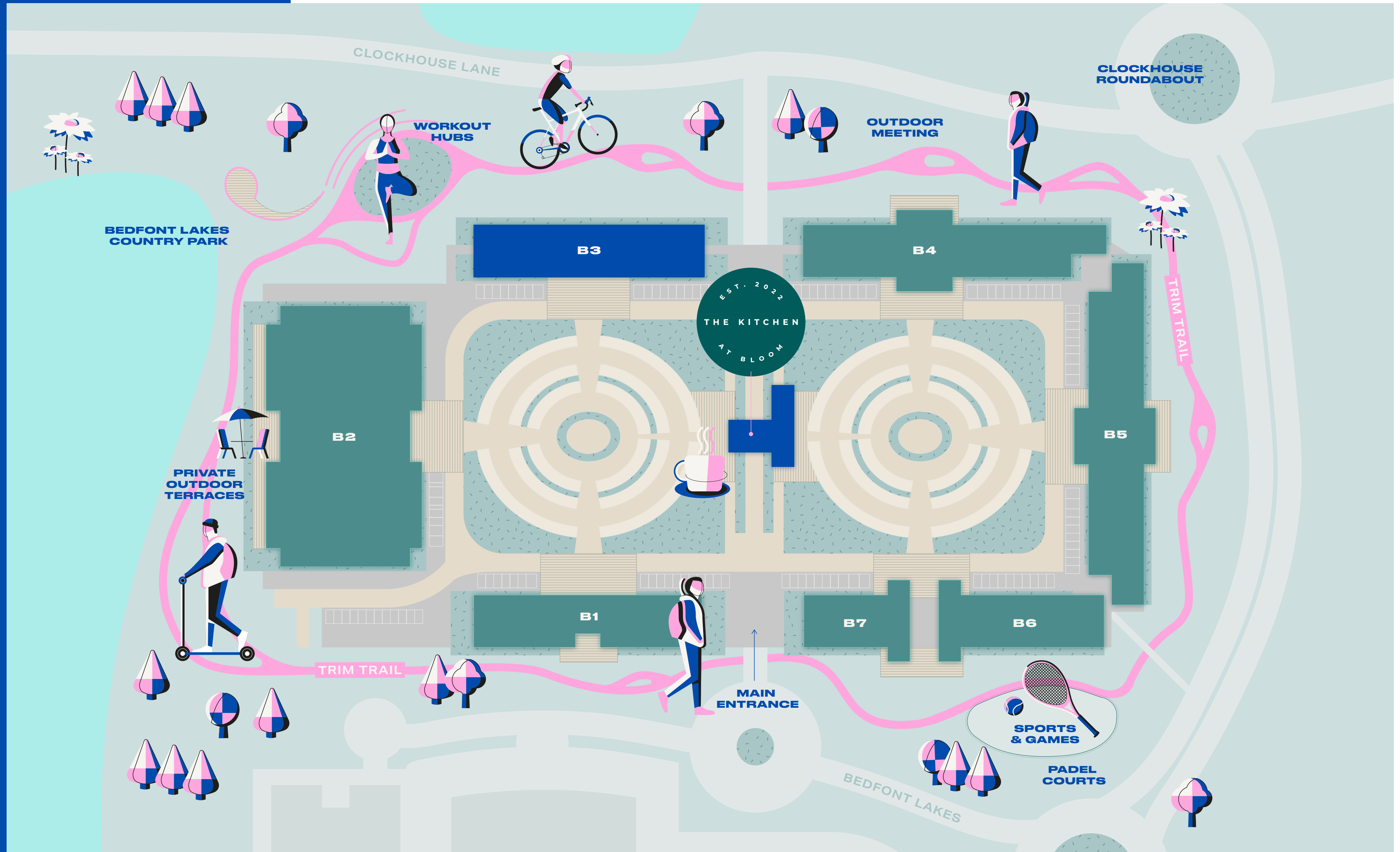
There is potential to add ground floor Pavilion of 1,842 sq ft at the rear of the building which has planning consent.

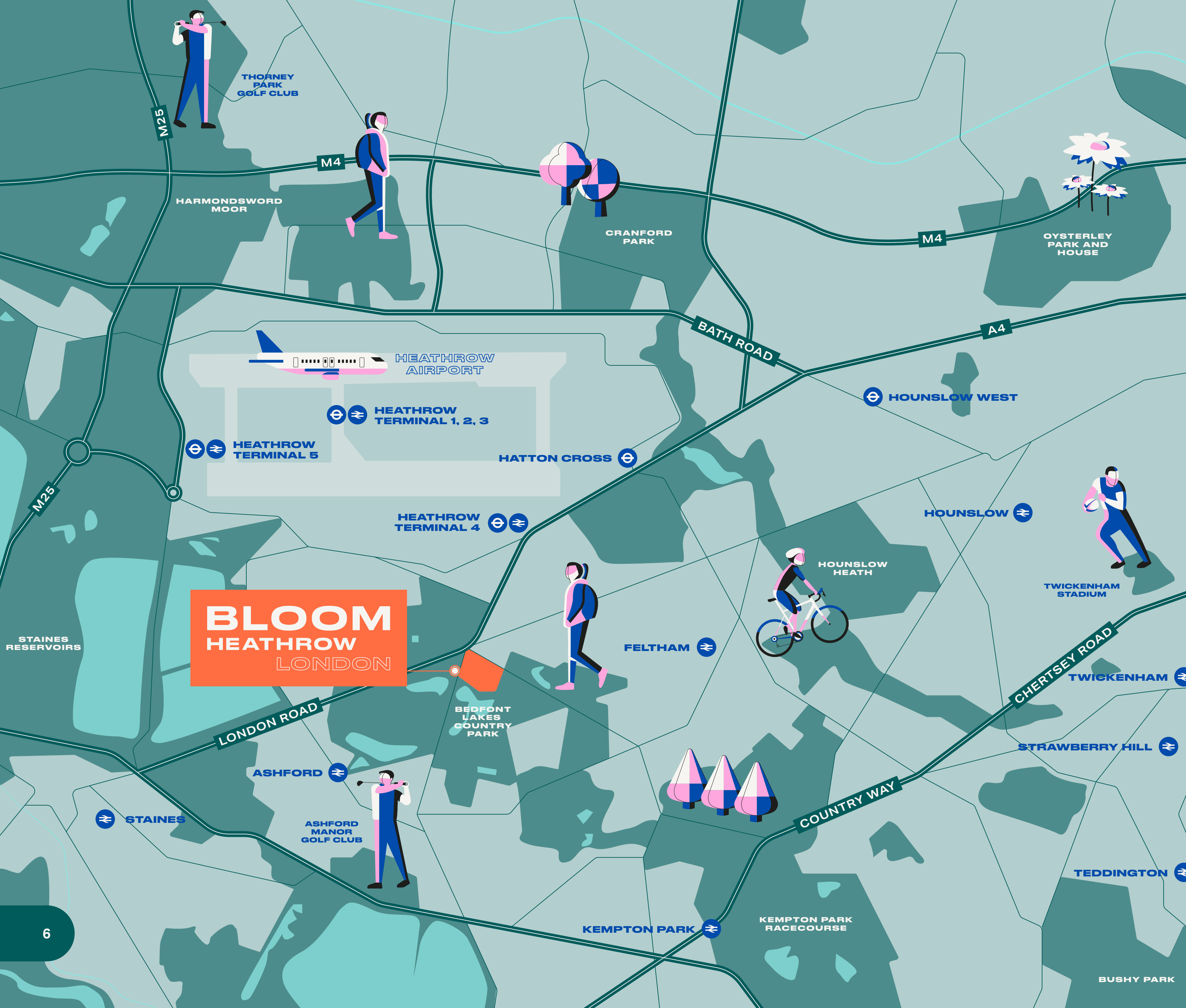


Office Core Lift Terrace

Floor areas IPMS 3. Floor plan not to scale. For indicative purposes only.

# THE MASTERPLAN





# IN THE HEART OF WEST LONDON

**Looking for the ideal business location? Come on in.**

Central London is close enough to be on tap, yet far enough away to feel like you've left it all behind. You're right at the crossroads of the beautiful Home Counties of Surrey, Berkshire and Buckinghamshire. There's nature in abundance and of course, Heathrow, one of the world's most important gateways, is just minutes away.

Our estate is adjacent to the 180-acre Bedfont Lakes Country Park. This Green Flag Award winner is a nature-lover's paradise. There's a fishing lake, nature reserve, walking and running trails, a visitor's centre, wildlife centre and outdoor playgrounds.

We can't think of anywhere better to get away from your desk and recharge your batteries.

# CONNECTIVITY MATTERS HERE

## BLOOM BY CAR

Travel times from Bloom Heathrow London.

Heathrow Terminal 4	7 mins
Feltham	8 mins
Staines	15 mins
Central London	52 mins
M3 (J1)	9 mins
M4 (J3)	14 mins
M25 (J14)	13 mins
Hatton Cross	7 mins

## BLOOM BY RAIL

Travel times to Bloom\* from London and Reading.

Richmond	10 mins
Clapham Junction	18 mins
London Waterloo	29 mins
Reading	52 mins

## BLOOM BY CROSSRAIL

Travel times from Heathrow station.

Paddington	24 mins
Bond Street	28 mins
Liverpool Street	30 mins
Reading	50 mins

## BLOOM BY UNDERGROUND

Travel times from Heathrow Terminal 4 Station.

Hammersmith	46 mins
Ealing Broadway	50 mins
Paddington	55 mins
Victoria	1 hr 2 mins
Bond Street	1 hr 6 mins
Liverpool Street	1 hr 20 mins
Farringdon	1 hr 22 mins

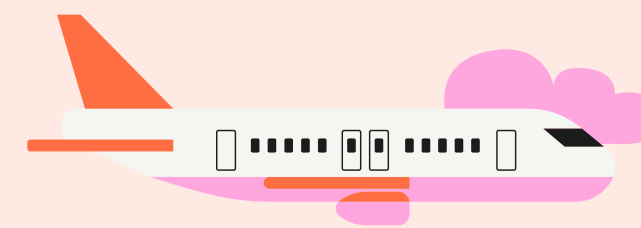
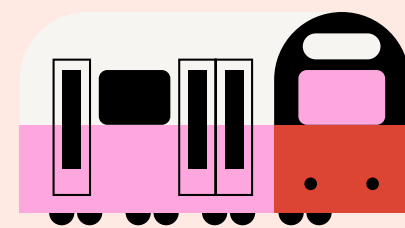
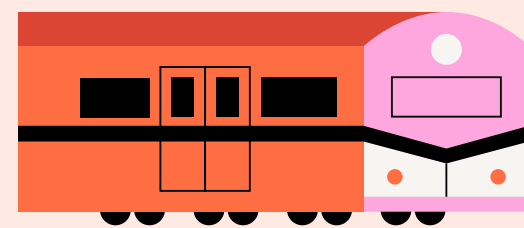
## BLOOM BY AIR

Travel times from Heathrow Airport.

Amsterdam	1 hr 5 mins
Paris	1 hr 10 mins
Dublin	1 hr 15 mins
Frankfurt	1 hr 40 mins
Berlin	1 hr 55 mins
Milan	2 hrs
Madrid	2 hrs 15 mins

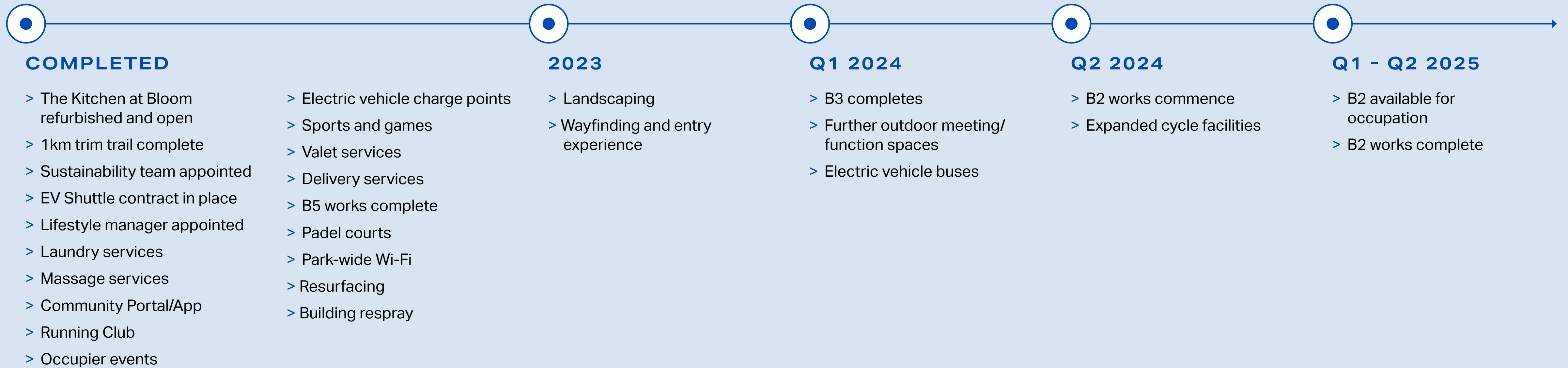
## EV SHUTTLE BUSES

We're electrifying our fleet of shuttle buses that run every weekday from 7.20am to 7.30pm. You can travel in style and comfort and absolutely free. The bus goes to Feltham Station every 15 mins and Hatton Cross every 30 mins.



\*from Feltham Station

# BLOOM TIMELINE





# FROM FOUR GREY WALLS TO 19 GREEN ACRES

## OUR NATURAL SETTING ISN'T A BONUS, IT'S HOW WE DO BUSINESS

Wherever you look, you're blessed with spectacular views. And we're not shy about giving Mother Nature a helping hand.

We're planting native shrubs and flowers around the campus, creating improved wildlife habitats through enhanced planting. And by introducing bug hotels, bird feeders and wildlife boxes, we're attracting even more natural wonders. As an added bonus, customers even get their own plots to grow herbs and wildflowers.



B3 TERRACE



LAKESIDE ENVIRONMENT



1KM TRIM TRAIL



# FROM SOURDOUGH TO SWEET SUCCESS

The Kitchen at Bloom was opened in January 2022. We believe eating well is sharing seasonal, local, food that nourishes our bodies, so expect food of all styles and flavours, and some pretty spectacular coffee too.

We only use responsibly sourced ingredients of the highest quality, all lovingly prepared by our chef team. Taste, texture and sustainability are all on the menu, so we source from local farmers, within 80-100 miles of Bloom. Plus our used rapeseed oil is turned into bio fuel, and food waste into renewable energy or biofertiliser.

Any excess produce is either posted on the Olio app for collection, or given to The Felix Project for non-profit organisations across London.

Package lightly. It's simple: our packaging needs to be light on the earth's resources, light in transport, and light on post-use footprint. That's why we do our best to use natural and recycled materials, with functional designs that can be reused, recycled or composted.





# NOW BLOOM FITS PERFECTLY IN YOUR POCKET

With such a smart workplace, you'd be right to expect some really smart tech.

From security to climate control, Bloom uses the latest technology to help you get more out of your day.

The Bloom app also connects you with everything that's going on. Team updates, exercise classes, events, meeting room availability as well as the best travel routes and what's on locally... it's a window onto the whole Bloom experience. Log in on your desktop, tablet or phone, and everything you need is right at your fingertips.

# INTERESTED?

## WE'D LOVE TO HEAR FROM YOU



**Andrew Willcock**

D: 020 7409 8866  
M: 07870 999 628  
awillcock@savills.com

**Stuart Chambers**

T: 020 7075 2883  
M: 07870 999 339  
stuart.chambers@savills.com



**Richard Harding**

D: 020 3362 4349  
M: 07730 817 019  
richardharding@brayfoxsmith.com

**Simon Knight**

T: 020 7629 5456  
M: 07818 012 419  
simonknight@brayfoxsmith.com

**James Shillabeer**

T: 020 3363 4351  
M: 07824 663 594  
jameshillabeer@brayfoxsmith.com

**[bloomheathrowlondon.com](http://bloomheathrowlondon.com)**

**Disclaimer**

These details are set out as a general outline only for guidance. All descriptions, references to condition and necessary permissions for use, and other details are indicative and should not be relied upon as statements or representation of fact. Any reference to alterations to, or use of, any part of the property does not mean that any necessary planning, building regulations or other consent has been obtained. All photography and computer generated imagery are indicative only and should not be relied upon. September 2023.