

# One Eton St.

RICHMOND-UPON-THAMES | TW9 1AG

**28,596 sq ft  
available**

Prime office space  
in the heart of Richmond









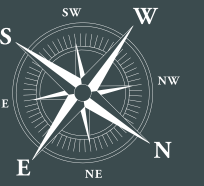
ONE ETON STREET HAS RECENTLY UNDERGONE A COMPREHENSIVE REFURBISHMENT AND PROVIDES 28,596 SQ FT OF SUSTAINABLE, HIGH QUALITY WORKSPACE AT ONE OF RICHMOND'S MOST HIGH PROFILE OFFICE BUILDINGS

Situated in the heart of Richmond, One Eton Street is a 3 minute walk from the station and set amongst the bustle of the High Street.

The first, second and third floors are available with floors ranging from 7,218 sq ft upwards.







# Area Schedule

Floor	Use	Sq Ft	Sq M
3RD FLOOR	OFFICE	7,218	671
2ND FLOOR	OFFICE	11,034	1,025
1ST FLOOR	OFFICE	9,492	882
1ST FLOOR	BREAKOUT AREA	349	32
GROUND	RECEPTION	503	47
<b>TOTAL</b>		<b>28,596</b>	<b>2,657</b>

Net Internal Areas (6th Edition).

# Specification

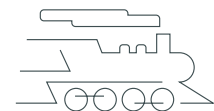
- Newly remodelled and refurbished reception
- Communal mezzanine break out area
- Private roof terraces
- Shower facilities, changing rooms & lockers
- New LED lighting
- VRV Air-Conditioning system
- BREEAM: Excellent
- EPC: B
- Ground source heat pump system
- EWave 4 Star Accreditation



Cycle storage

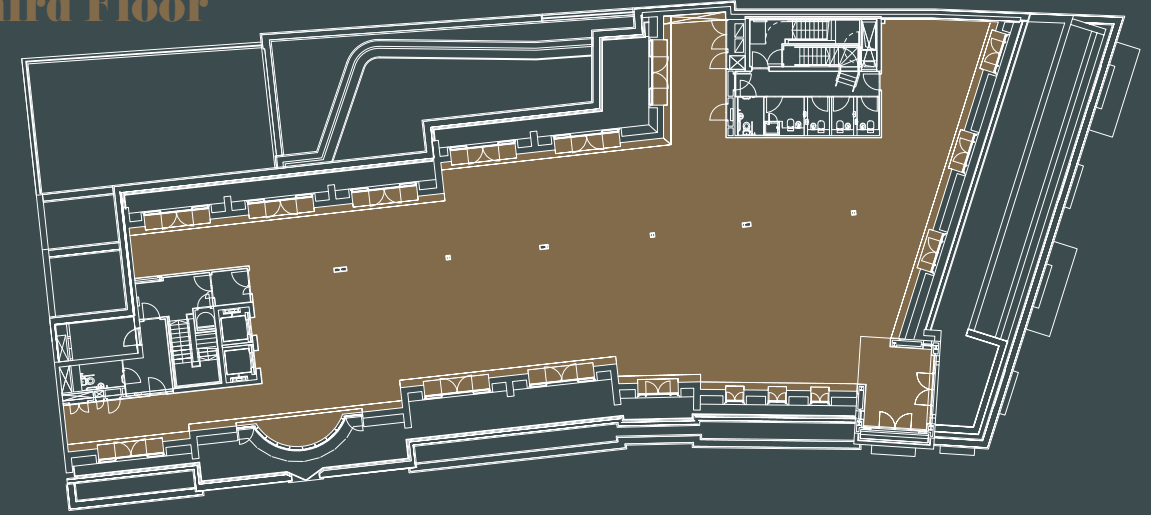


Male & Female shower & changing rooms

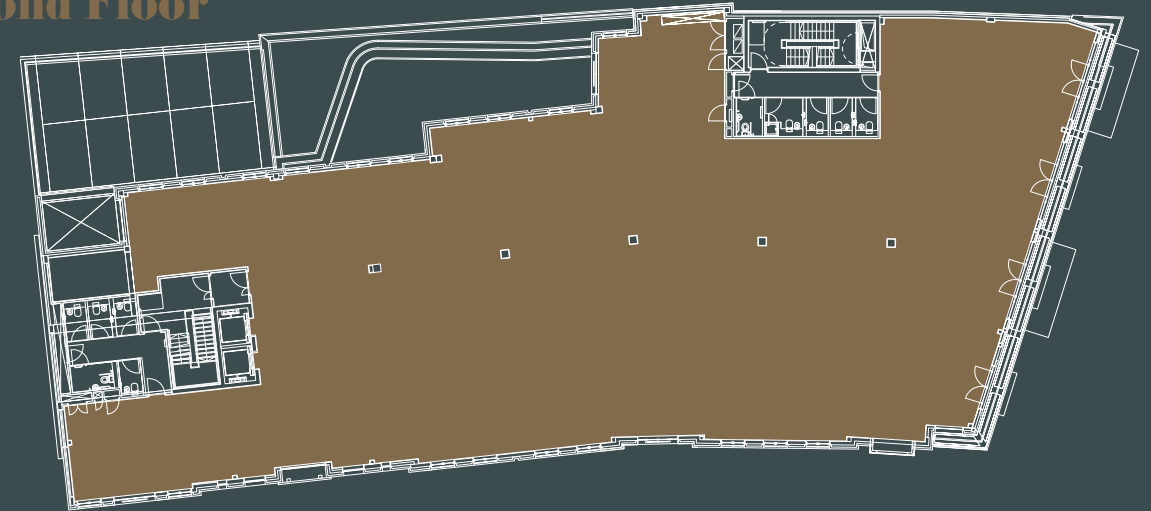


Prime location 320m from Richmond Train Station

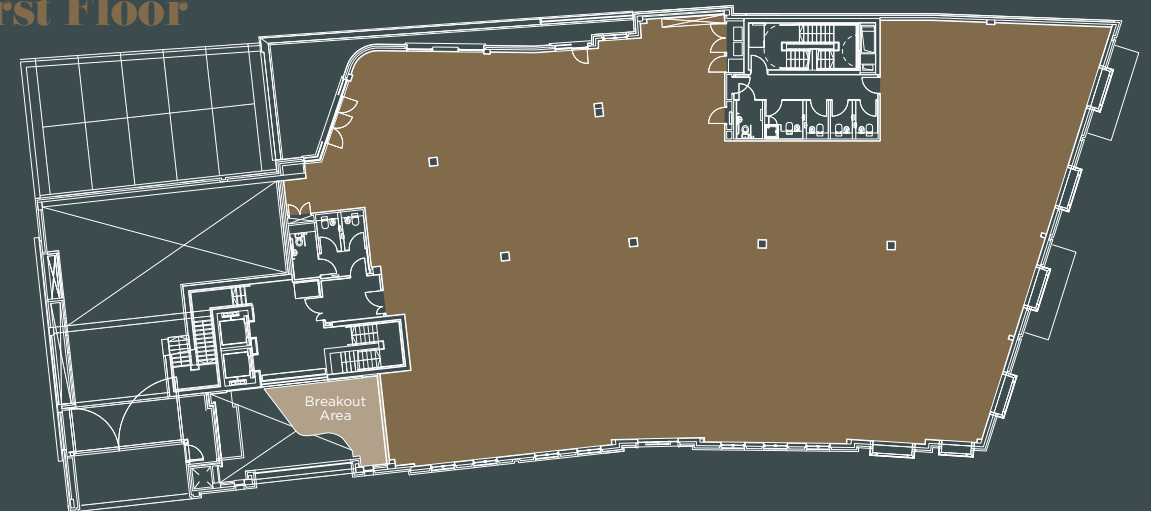
## Third Floor



## Second Floor



## First Floor



To view/download space plans, visit:  
<https://oneeton-richmond.com/the-building/>

# A Connected Location

You can travel to Richmond by boat, train, car, underground, bicycle or by foot.

Heathrow is a 25 minute drive, Waterloo Station is 20 minutes by Train, Victoria is 34 minutes and Piccadilly 33 minutes.

<b>Tube</b> from Richmond	<b>mins</b>
Earl's Court	21
Victoria	29
Westminster	32
Edgware Road	34
Oxford Circus	37
King's Cross St. Pancras	41
Heathrow Airport (Terminal 1)	51

Source: tfl.gov.uk

<b>Train</b> from Richmond	<b>mins</b>
Clapham Junction	10
Kingston-Upon-Thames	17
London Waterloo	20
Vauxhall	22
Wimbledon	25
Reading	58

Source: tfl.gov.uk

<b>Drive</b>	<b>mins</b>
Kingston-Upon-Thames	13
Heathrow Airport	25
Guildford	41
Reading	53

Source: googlemaps







### Food

- 1 One Eton retail space
- 2 Waitrose
- 3 Tesco Metro
- 4 Holland & Barrett
- 5 Marks & Spencer

### Hotels

- 6 Travelodge
- 7 The Petersham Hotel
- 8 Richmond Hill Hotel
- 9 Richmond Harbour Hotel & Spa
- 10 Orange Tree Hotel

### Pubs

- 11 The Cricketers Pub
- 12 The White Swan
- 13 The White Cross
- 14 Slug & Lettuce
- 15 Scotts

### One Eton St.

### Restaurants

- 16 The Ivy
- 17 Gaucho
- 18 Antipodea
- 19 No 1a Dukes St
- 20 Pier 1
- 21 144 On The Hill
- 22 Bills

### Health & fitness

- 23 Royal Mid-Surrey Golf Club
- 24 Richmond Hill Health Club
- 25 Digma Fitness
- 26 Richmond Athletic Association
- 27 Virgin Active Twickenham
- 28 Harlequins RFC
- 29 Twickenham Stadium

### Green Spaces

- 30 Old Deer Park
- 31 Richmond Park
- 32 Terrace Gardens
- 33 Kew Gardens
- 34 Gothic Gardens
- 35 Marble Hill Park





## Terms

### RENT

Price Upon Application.

### SERVICE CHARGE

Price Upon Application.

### RATES PAYABLE

To be Assessed.

Contact the agents  
to find out more

 HanoverGreen 

**Harry Pruden**

07721 128 796

[hpruden@hanovergreen.co.uk](mailto:hpruden@hanovergreen.co.uk)

**Holly Purvis**

07977 371 475

[holly.purvis@savills.com](mailto:holly.purvis@savills.com)

**David Cuthbert**

07710 183 423

[dcuthbert@hanovergreen.co.uk](mailto:dcuthbert@hanovergreen.co.uk)

**Florence Horner**

07870 999 255

[florence.horner@savills.com](mailto:florence.horner@savills.com)

**[oneeton-richmond.com](http://oneeton-richmond.com)**

Sat Nav: TW9 1AG

Important Notice 1. Particulars: These particulars are not an offer or contract, nor part of one. You should not rely on statements by Savills in the particulars or by word of mouth or in writing ("information") as being factually accurate about the property, its condition or its value. None of the joint agents has any authority to make any representations about the property, and accordingly any information given is entirely without responsibility on the part of the agents, seller(s) or lessor(s). 2. Photos etc: The photographs show only certain parts of the property as they appeared at the time they were taken. Areas, measurements and distances given are approximate only. 3. Regulations etc: Any reference to alterations to, or use of, any part of the property does not mean that any necessary planning, building regulations or other consent has been obtained. None of the services or appliances have been tested and no warranty is given or is to be implied that they are in working order. A buyer or lessee must find out by inspection or in other ways that these matters have been properly dealt with and that all information is correct. 4. VAT: The VAT position relating to the property may change without notice. (v8) July 2024