

Foxhall



Estate Agents

625 Foxhall Road
Ipswich IP3 8ND

Unit 4, Ropes Drive
Kesgrave IP5 2FU

01473 721133

01473 613296

info@foxhallestateagents.co.uk

www.foxhallestateagents.co.uk



Gladstone Road

East Ipswich, Ipswich, IP3 8AT

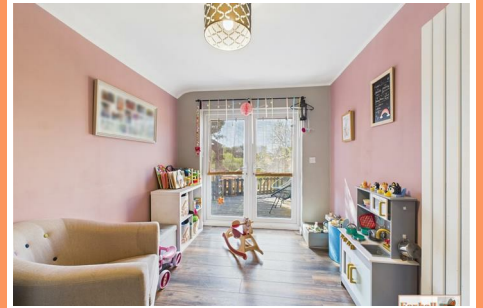
Asking price £325,000



Gladstone Road

East Ipswich, Ipswich, IP3 8AT

Asking price £325,000



Front Garden

Off road parking to the front, part of the front garden being enclosed by walling and decorative stones.

Main Door Hallway

Double glazed entrance door to entrance hallway with doors to dining room, sitting room/study.

Sitting Room/Study

10'5" x 9'9" (3.18m x 2.97m)

Strip flooring, two windows to the front, radiator and picture rail.

Dining Room

13'1" x 10'3" (3.99m x 3.12m)

Cupboard under stairs, attractive fire surround, double glazed windows to rear, door to stairs and through to kitchen/breakfast area and door to the lounge.

Lounge

14'0" x 11'0" (4.27m x 3.35m)

Radiator, double glazed French doors to the outside and through to the second entrance area

Second Entrance Area

2'11" x 2'4" (0.89m x 0.71m)

Obscure double glazed door to the front, double glazed window to the front and door to the downstairs cloakroom.

Downstairs Cloakroom

4'3" x 3'11" (1.30m x 1.19m)

Low level W.C, wash hand basin with a mixer tap, double glazed window to the front

Kitchen/Breakfast Room

22'8" x 8'1" (6.91m x 2.46m)

Well fitted comprising single drainer stainless steel sink unit, with a mixer tap and cupboards under, excellent range of wooden work surfaces with cupboards, drawers and appliance space under. Wall mounted cupboards with a wall mounted cupboard housing the Ideal boiler (we understand it was fitted in 2019), extractor fan. Through to breakfast area with upright radiator, double glazed French doors leading out to the decking area outside .

Landing

Access to the loft, storage cupboard, doors to bedroom one, bedroom two, bedroom three, bedroom four and bathroom.

Bedroom One

11'2" x 10'8" (3.40m x 3.25m)

Double glazed window to front and radiator.

Bedroom Two

10'9" x 10'4" (3.28m x 3.15m)

Two windows to front, wardrobe recess, radiator, laminated style flooring.

Bedroom Three

9'5" x 8'8" (2.87m x 2.64m)

Double glazed window to rear and radiator.

Bedroom Four

9'3" x 7'6" (2.82m x 2.29m)

Double glazed window to rear and upright radiator.

Bathroom

6'3" x 5'11" (1.91m x 1.80m)

Panel bath with a mixer tap, separate shower (with

rainfall and hand held showers), over the bath with screen, low level W.C, pedestal wash hand basin with mixer tap, extractor fan, radiator and double glazed window to rear.

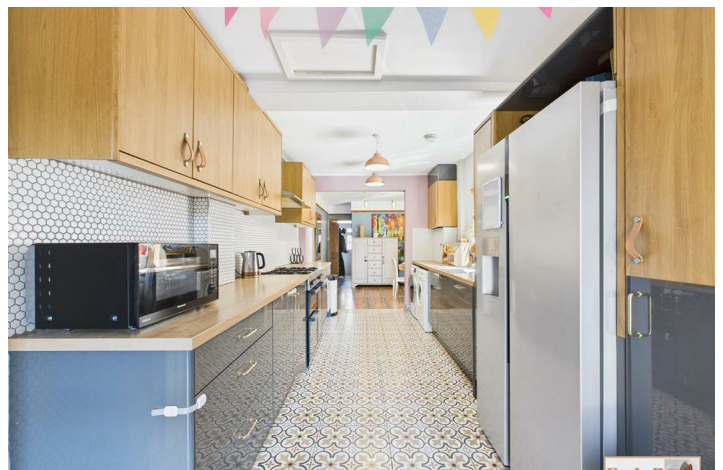
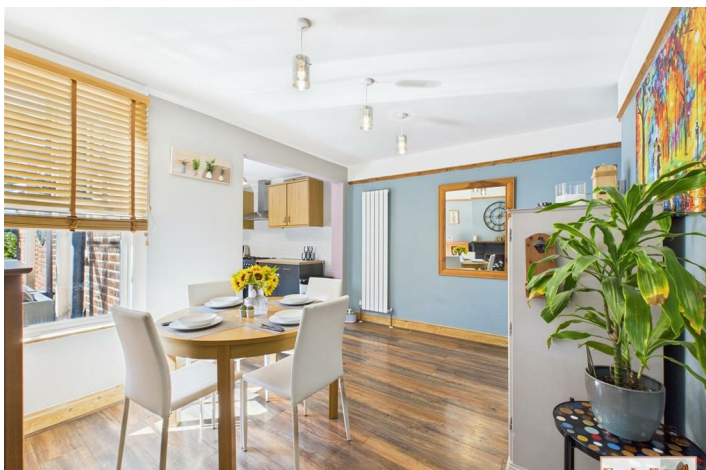
Rear Garden

Rear garden commences with decked areas immediately behind the dining room and kitchen/breakfast area. The area behind the kitchen/breakfast is enclosed by picket fence with steps leading to a paved area with decorative stones. Around to the decked area behind the dining room and to the other side there are steps down to a large paved patio area ideal for entertaining, with sleeper borders and further steps down to another decked area with access down to a lower area which has been barked with a mature tree.

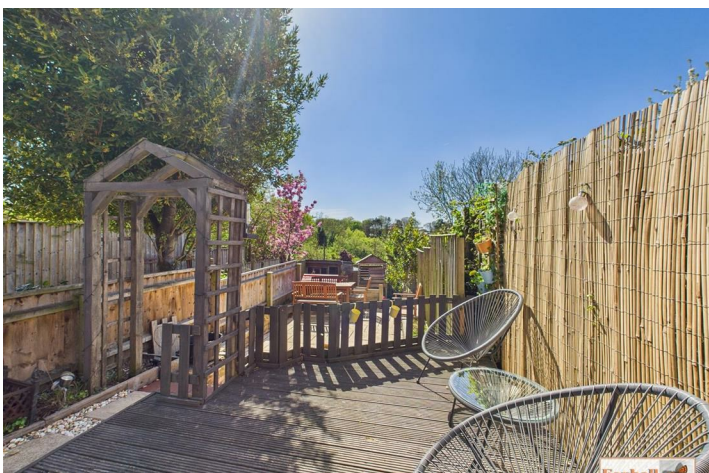
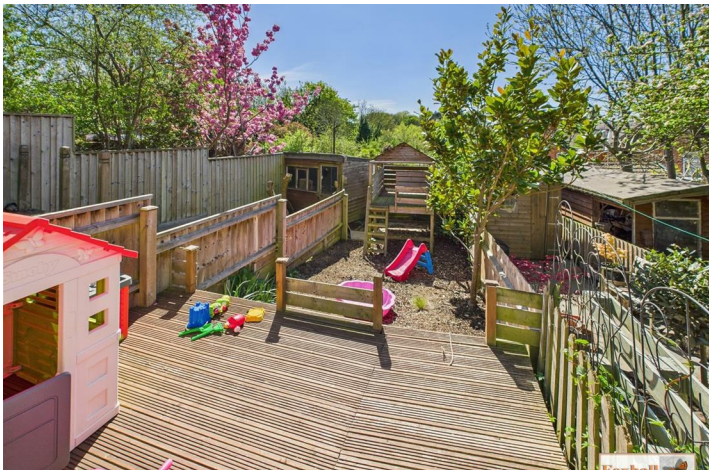
Agents Notes

Tenure - Freehold

Council Tax Band - B







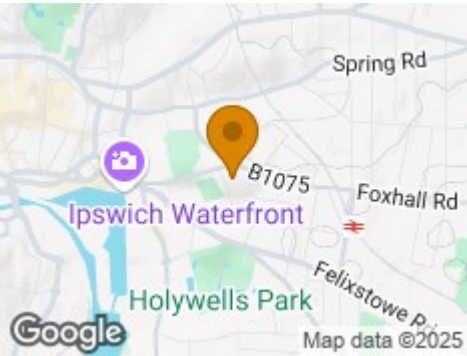
Road Map



Hybrid Map



Terrain Map



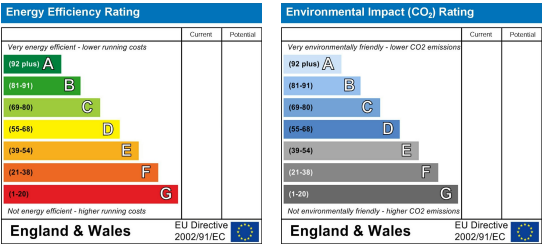
Floor Plan



Viewing

Please contact us on 01473 721133 if you wish to arrange a viewing appointment for this property or require further information.

Energy Efficiency Graph



These particulars, whilst believed to be accurate are set out as a general outline only for guidance and do not constitute any part of an offer or contract. Intending purchasers should not rely on them as statements of representation of fact, but must satisfy themselves by inspection or otherwise as to their accuracy. No person in this firms employment has the authority to make or give any representation or warranty in respect of the property.