

FOXGLOVE CLOSE

LOVE THE HOME YOU LIVE IN





FOXGLOVE CLOSE

CATTERICK GARRISON

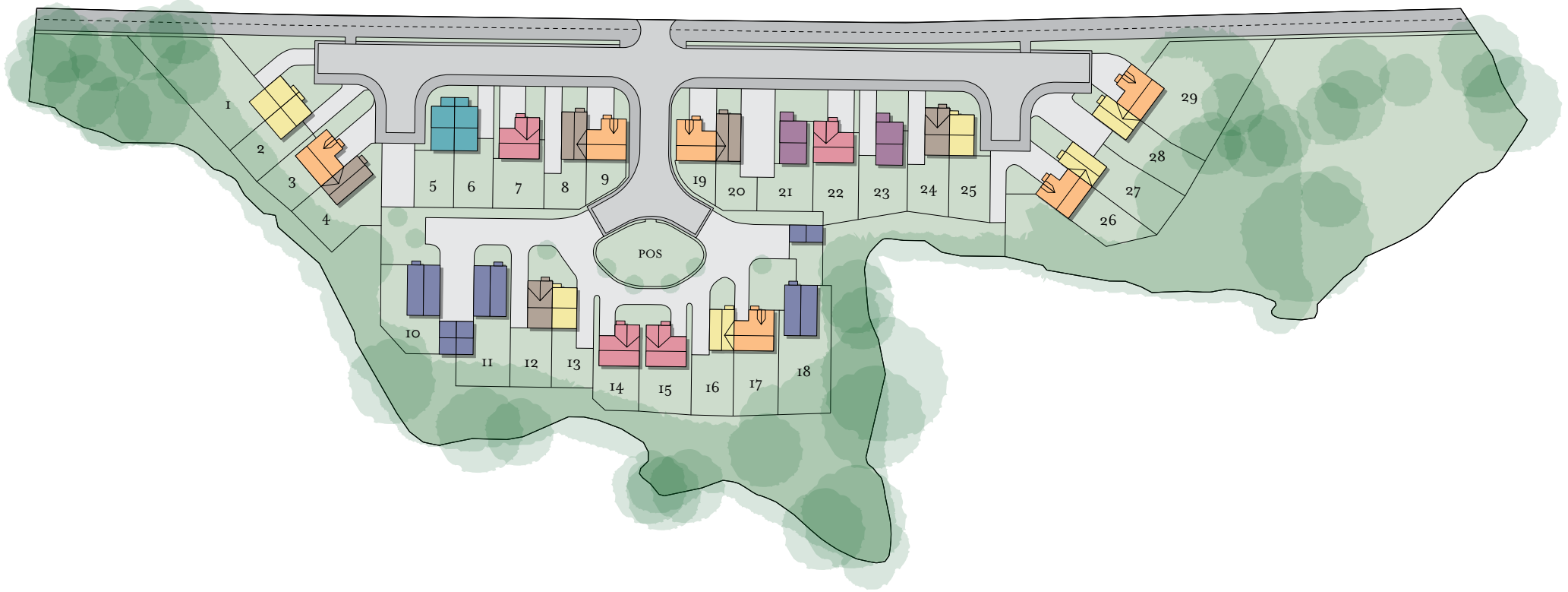
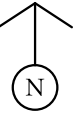
Foxglove Close is an exciting new development of 2, 3 and 4 bedroom Detached and Semi-Detached homes in Catterick.

Northcountry Homes are proud to be offering first time buyers and buyers wanting to move up the property ladder, a beautiful range of homes at an affordable price that we just know you'll love.

Catterick is close to the edge of the Yorkshire Dales, providing easy access to some of the best countryside around. There is the local Foxglove Covert nature reserve less than a mile away, the superb Richmond castle is only 3 miles away whilst catterick Racecourse is just a 4-mile drive.

Within close reach of the A1, the location is perfect for those who commute and there is the local bus route and a train station at nearby Northallerton. With York City centre being just an hour's drive away for shopping and Leeds Bradford Airport is also only an hour's drive, perfect for taking off to your holiday destination.

FOXGLOVE CLOSE




2 BEDROOM SEMI-DETACHED

3 BEDROOM SEMI-DETACHED


3 BEDROOM DETACHED

4 BEDROOM DETACHED

 *the ROSEFINCH*

 *the PIPIT*

 *the WAGTAIL*

 *the SERIN*

 *the FIRECREST*

 *the HARRIER*

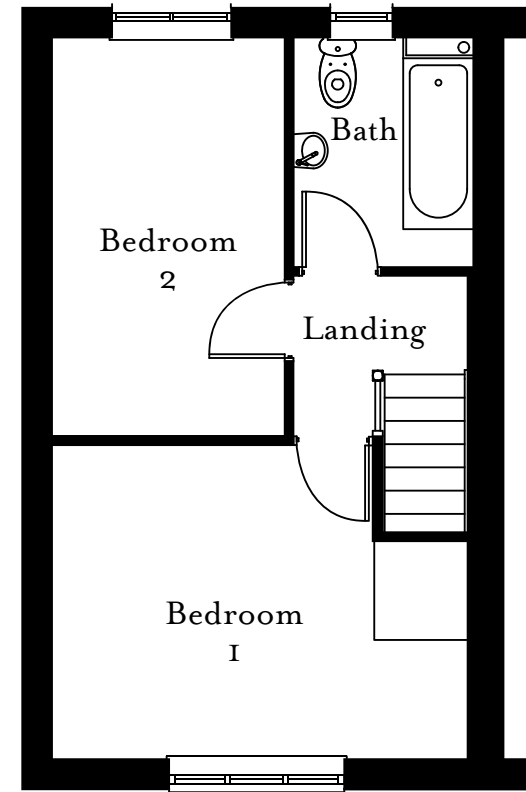
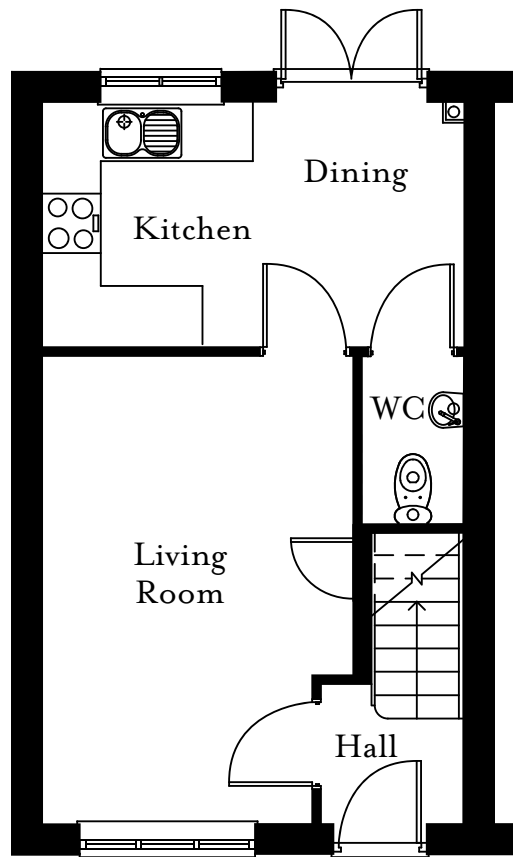
 *the WOODLARK*

2 BEDROOM SEMI-DETACHED



the ROSEFINCH

NORTH COUNTRY
HOMES



G GROUND FLOOR

ROOM	SIZE (METRES)	SIZE (FEET & INCHES)
Kitchen/Dining	4.15 × 2.42	13ft 7in × 7ft 11in
Living Room	4.64 × 3.07	15ft 3in × 10ft 1in
WC	1.67 × 0.99	5ft 6in × 3ft 3in

I FIRST FLOOR

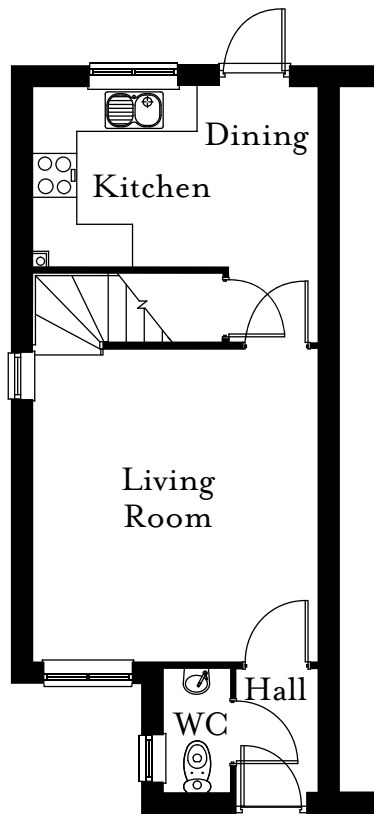
ROOM	SIZE (METRES)	SIZE (FEET & INCHES)
Bedroom I	4.15 × 3.10	13ft 7in × 10ft 2in
Bedroom 2	3.95 × 2.29	12ft 11in × 7ft 6in
Bathroom	2.29 × 1.77	7ft 6in × 5ft 10in

2 BEDROOM SEMI-DETACHED



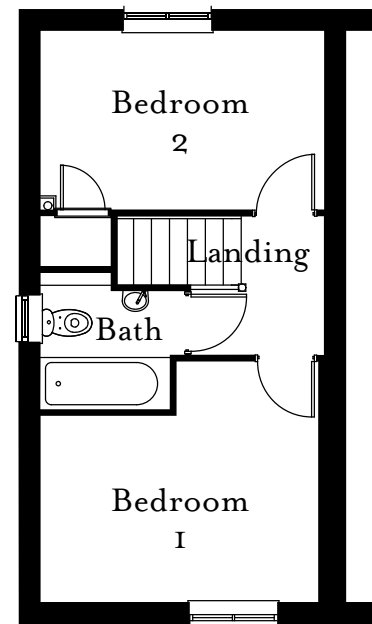
the FIRECREST

NORTH COUNTRY
HOMES



0 GROUND FLOOR

ROOM	SIZE (METRES)	SIZE (FEET & INCHES)
Kitchen/Dining	3.81 × 2.40	14ft 8in × 9ft 6in
Living Room	4.10 × 3.63	14ft 8in × 11ft 11in
WC	1.60 × 0.88	5ft 3in × 2ft 11in



1 FIRST FLOOR

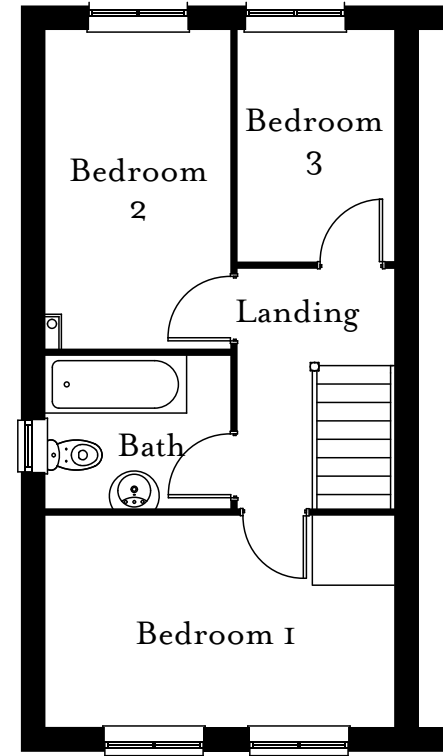
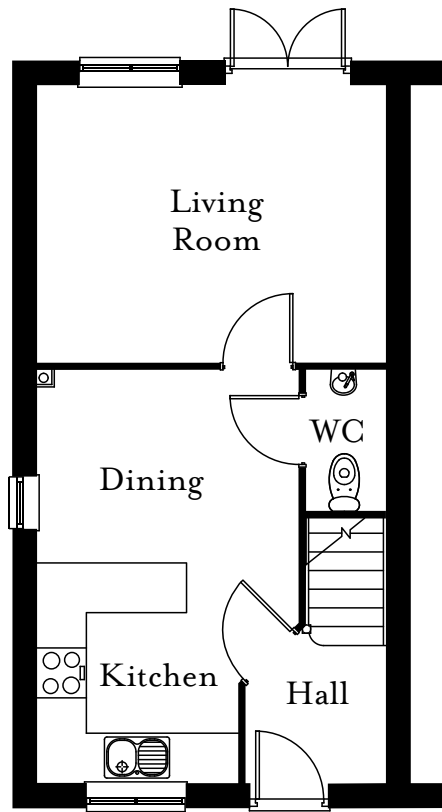
ROOM	SIZE (METRES)	SIZE (FEET & INCHES)
Bedroom 1	3.77 × 3.20	13ft 0in × 8ft 3in
Bedroom 2	3.77 × 2.37	8ft 2in × 6ft 2in
Bathroom	1.87 × 1.87	6ft 2in × 6ft 2in

3 BEDROOM SEMI-DETACHED



the PIPIT

NORTH COUNTRY
HOMES



0 GROUND FLOOR

ROOM	SIZE (METRES)	SIZE (FEET & INCHES)
Kitchen/Dining	4.95 × 3.12*	16ft 3in × 10ft 3in
Living Room	4.15 × 3.31	13ft 7in × 10ft 10in
WC	1.65 × 0.95	5ft 3in × 2ft 11in

*Maximum

1 FIRST FLOOR

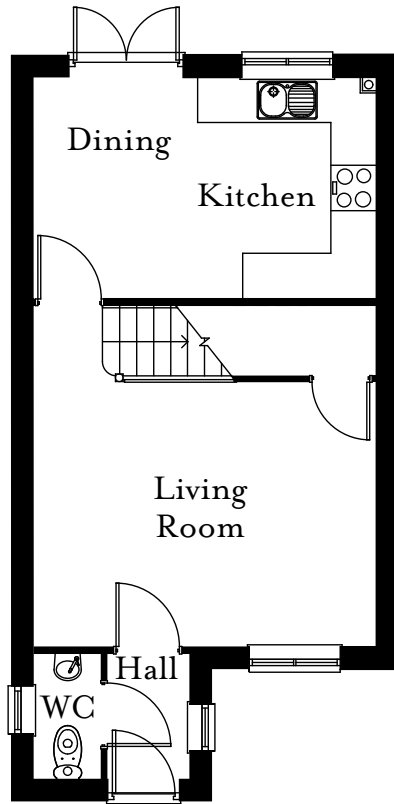
ROOM	SIZE (METRES)	SIZE (FEET & INCHES)
Bedroom 1	4.15 × 2.52	13ft 7in × 8ft 3in
Bedroom 2	3.81 × 2.20	12ft 6in × 7ft 3in
Bedroom 3	2.76 × 1.86	9ft 1in × 6ft 1in
Bathroom	2.20 × 1.84	7ft 3in × 6ft 0in

3 BEDROOM DETACHED



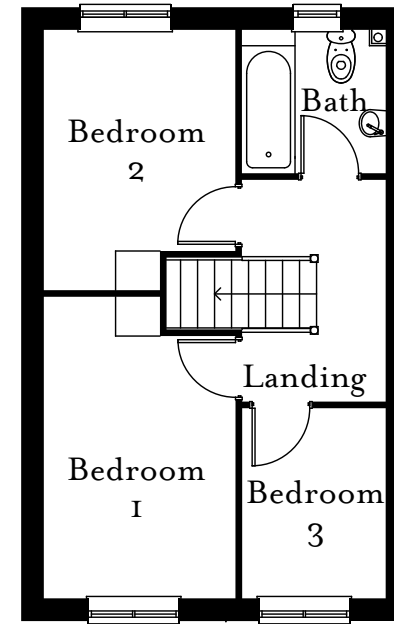
the WAGTAIL

NORTH COUNTRY
HOMES



0 GROUND FLOOR

ROOM	SIZE (METRES)	SIZE (FEET & INCHES)
Kitchen/Dining	4.48 × 2.90	14ft 8in × 9ft 6in
Living Room	4.48 × 3.63	14ft 8in × 11ft 11in
WC	1.60 × 0.88	5ft 3in × 2ft 11in



1 FIRST FLOOR

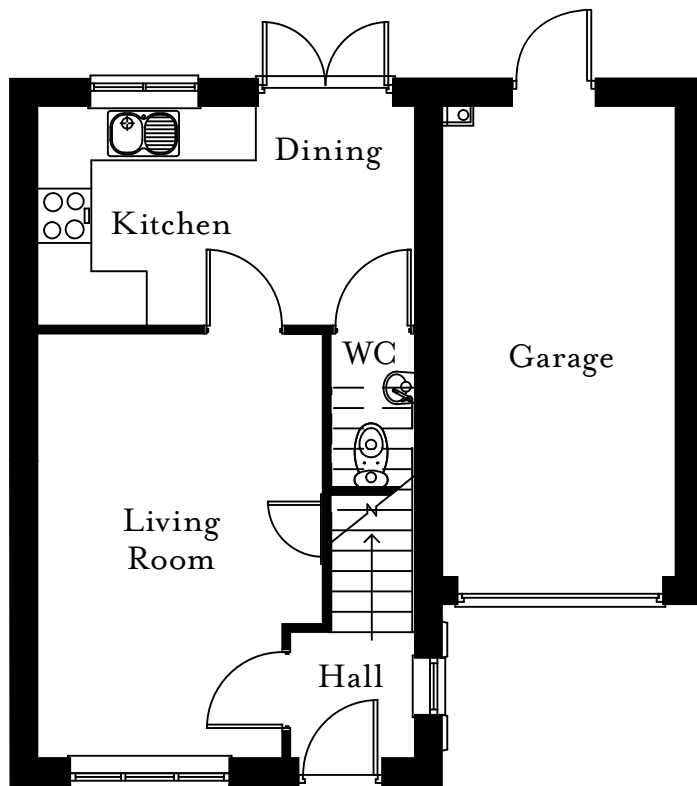
ROOM	SIZE (METRES)	SIZE (FEET & INCHES)
Bedroom 1	3.96 × 2.51	13ft 0in × 8ft 3in
Bedroom 2	3.42 × 2.50	11ft 2in × 8ft 3in
Bedroom 3	2.49 × 1.87	8ft 2in × 6ft 2in
Bathroom	1.87 × 1.87	6ft 2in × 6ft 2in

3 BEDROOM DETACHED



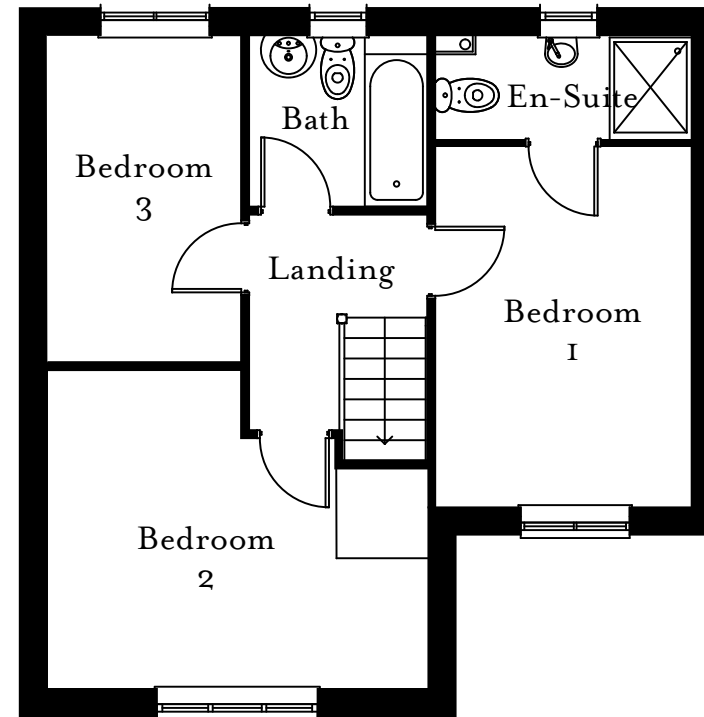
the WOODLARK

NORTH COUNTRY
HOMES



G GROUND FLOOR

ROOM	SIZE (METRES)	SIZE (FEET & INCHES)
Kitchen/Dining	4.15 × 2.40	13ft 7in × 7ft 10in
Living Room	4.66 × 3.07	15ft 4in × 10ft 1in
WC	1.69 × 0.99	5ft 7in × 3ft 3in



I FIRST FLOOR

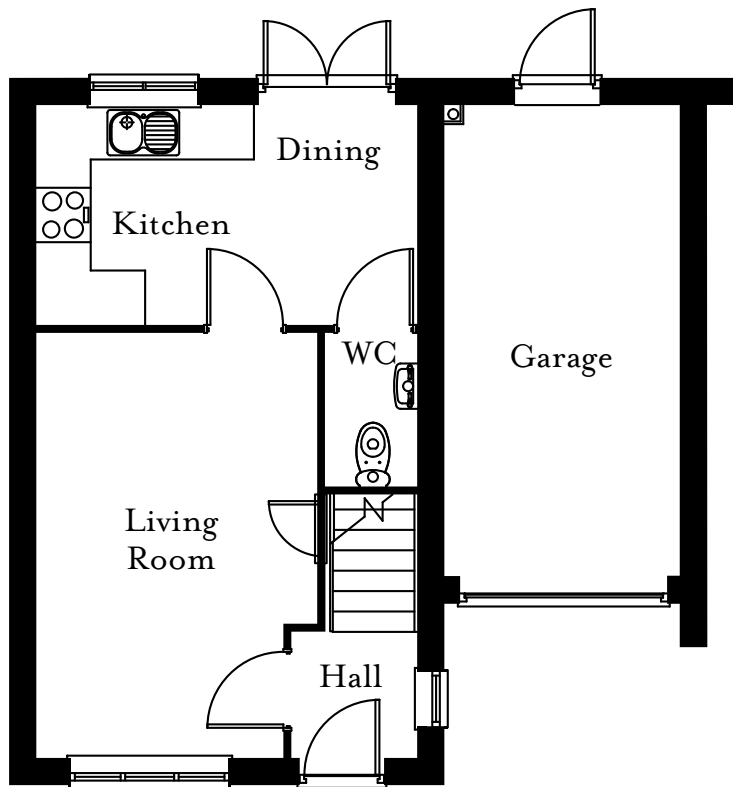
ROOM	SIZE (METRES)	SIZE (FEET & INCHES)
Bedroom 1	3.97 × 2.80	13ft 0in × 9ft 2in
En-suite	1.10 × 2.80	3ft 7in × 9ft 2in
Bedroom 2	4.15 × 3.48	13ft 7in × 11ft 5in
Bedroom 3	3.58 × 2.11	11ft 9in × 6ft 11in
Bathroom	1.86 × 1.96	6ft 1in × 6ft 5in

3 BEDROOM SEMI-DETACHED



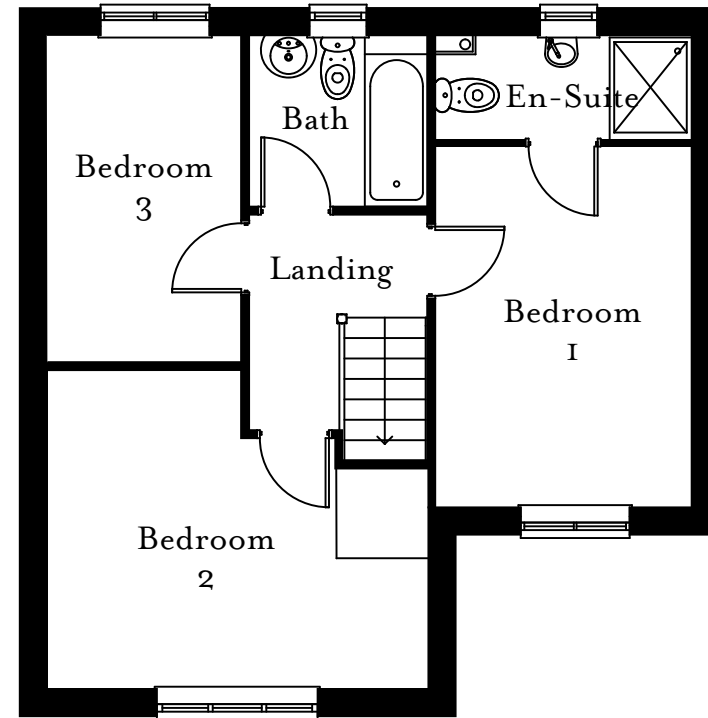
the HARRIER

NORTH COUNTRY
HOMES



G GROUND FLOOR

ROOM	SIZE (METRES)	SIZE (FEET & INCHES)
Kitchen/Dining	4.15 × 2.38	13ft 7in × 7ft 10in
Living Room	4.66 × 3.07	15ft 4in × 10ft 1in
WC	1.69 × 0.99	5ft 7in × 3ft 3in



1 FIRST FLOOR

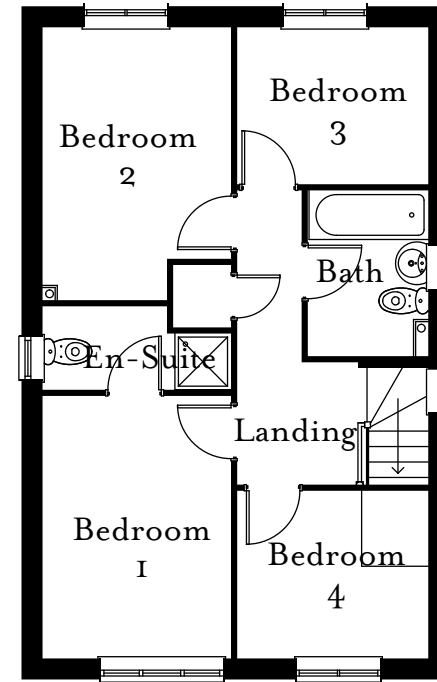
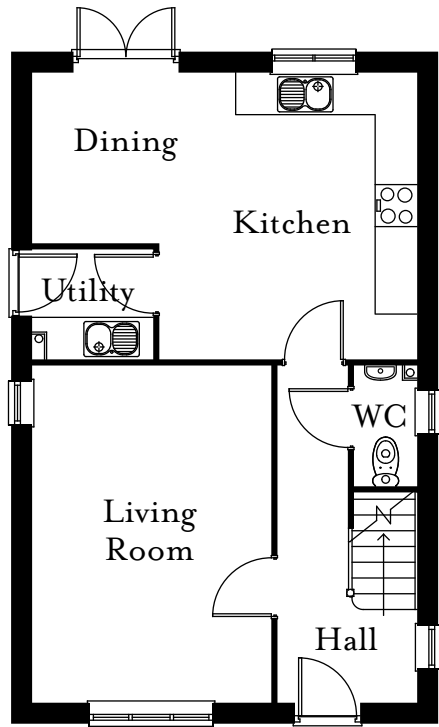
ROOM	SIZE (METRES)	SIZE (FEET & INCHES)
Bedroom 1	3.97 × 2.80	13ft 0in × 9ft 2in
En-suite	1.10 × 2.80	3ft 7in × 9ft 2in
Bedroom 2	4.15 × 3.48	13ft 7in × 11ft 5in
Bedroom 3	3.58 × 2.11	11ft 9in × 6ft 11in
Bathroom	1.96 × 1.86	6ft 5in × 6ft 1in

4 BEDROOM DETACHED



the SERIN

NORTH COUNTRY
HOMES



GROUND FLOOR

ROOM	SIZE (METRES)	SIZE (FEET & INCHES)
Kitchen/Dining	5.45 × 4.05	17ft 11in × 13ft 3in
Living Room	4.74 × 3.39	15ft 7in × 11ft 1in
Utility	1.71 × 1.61	5ft 7in × 5ft 3in
WC	1.69 × 0.88	5ft 7in × 2ft 10in

FIRST FLOOR

ROOM	SIZE (METRES)	SIZE (FEET & INCHES)
Bedroom 1	3.71 × 2.66	12ft 2in × 8ft 9in
En-suite	2.66 × 1.20	8ft 9in × 3ft 11in
Bedroom 2	3.80 × 2.66	12ft 6in × 8ft 9in
Bedroom 3	2.70 × 2.21	8ft 10in × 7ft 3in
Bedroom 4	2.70 × 2.36	8ft 10in × 7ft 9in
Bathroom	2.35 × 1.72	7ft 9in × 5ft 8in

Telephone: 01748 896 794

Email: foxglovesales@northcountryhomes.co.uk

www.northcountryhomes.co.uk

Issue 1 - Nov 23 Although every effort is made to ensure accuracy, exact details may vary during the course of construction. No responsibility can be accepted for any mis-statement on this literature, which is not a contract. The company also reserves the right to alter specification without notice.

NORTH COUNTRY
HOMES

SPECIFICATIONS

INTERIOR FEATURES

WALLS

White Matt Emulsion to all walls.

INTERNAL DOORS

6 panel style door painted white.

INTERNAL DOOR FURNITURE

Polished Chrome ironmongery.

STAIRCASE

Spindle newel post handrail and newel cap.

CEILINGS

White Matt Emulsion.

WOODWORK

White Gloss.

LIGHTING

All pendant lights are fitted with LED low energy bulbs.

CENTRAL HEATING

Dual Zone heating to allow different heat and timer settings for living areas and bedrooms.
Ideal standard system Combi Boiler.

TELEPHONE POINT

Fitted in the Lounge.

TV POINT

Fitted to Lounge and Master Bedroom - cabling to be provided to the loft for occupier's future provision of aerial.

ELECTRICAL SOCKETS

White. Multi point socket for aerial, telephone and power points in the Lounge.

SMOKE DETECTOR

Mains operated with battery back up.

ROOF SPACE

400mm insulation.

EXTERIOR FEATURES

WINDOWS

PVCu windows in white with Argon filled to increase thermal energy efficiency.

FASCIA & RAINWATER GOODS

PVCu fascia's in white. Drain pipes in black.

FRONT EXTERNAL DOOR

6 panel style door painted white with chrome ironmongery.

FRONT AND REAR DOOR

LOCKING SYSTEM

Multi point locking system.

PATIO DOORS

PVCu in white (Internally and externally).

GARAGE

Up and over style door in white.

KITCHEN, UTILITY & BATHROOM FEATURES

KITCHEN STYLES

A range of kitchens in modern styles and colours to choose from, with an option of handles.

WORK SURFACES

In a range of colour and design choices.

SINK

Stainless steel one bowl sink with chrome taps.

APPLIANCES

Single oven, hob and extractor.

SPLASHBACK

Kitchen Splashback included.

SANITARYWARE

Twyford, Alcona range in white.

Telephone: 01748 896 794

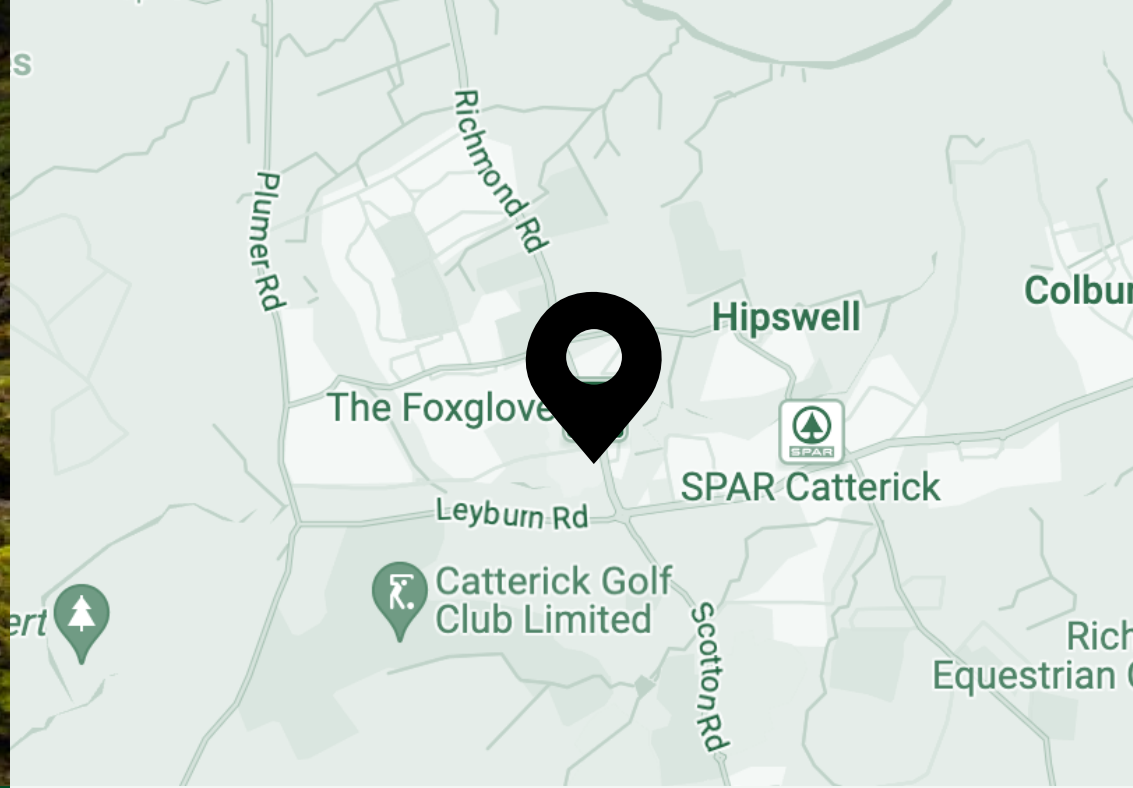
Email: foxglovesales@northcountryhomes.co.uk

www.northcountryhomes.co.uk

Issue 1 - Nov 23 Although every effort is made to ensure accuracy, exact details may vary during the course of construction. No responsibility can be accepted for any mis-statement on this literature, which is not a contract. The company also reserves the right to alter specification without notice.

The logo for North Country Homes features a stylized white house outline above the text "NORTH COUNTRY" in a serif font, with "HOMES" in a smaller sans-serif font below it, all enclosed in a thin white rectangular border.

NORTH COUNTRY
HOMES



FOXGLOVE CLOSE

GOUGH ROAD, CATTERICK GARRISON,
RICHMOND. DL9 3HH



A1 MOTORWAY
9 miles



NORTHALLERTON TRAIN STATION
15 miles



TEESIDE AIRPORT
22 miles (1 hour drive)



YORK CITY CENTRE
46 miles (1 hour drive)

LEEDS BRADFORD AIRPORT
50 miles (1 hour drive)