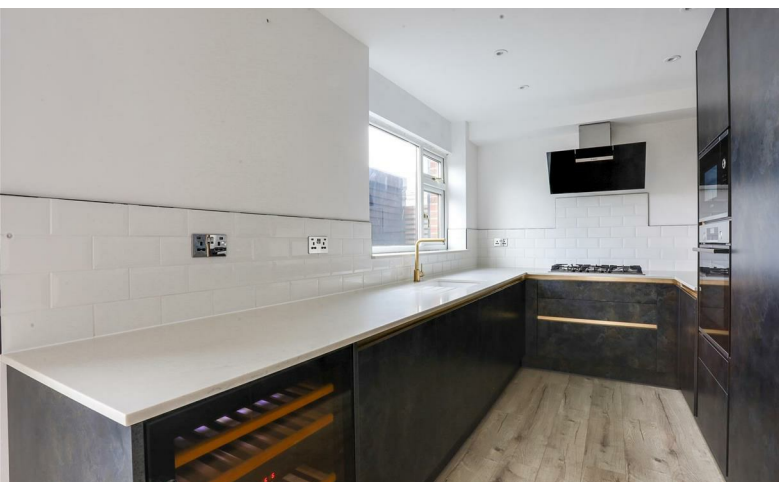


Hilltop Close, Cheshunt

£2,400



3 1 1 D

Sanctuary
Buntingford

42 Hilltop Close, Cheshunt, EN7 6QN

An exceptional family home to let positioned within this highly desirable and extremely sought after residential cul-de-sac. This semi detached house boasts spacious accommodation featuring three bedrooms, an additional loft room, a high spec kitchen and luxurious four piece bathroom suite. Externally there is a south facing landscaped rear garden and off street parking to the front.

Credit References and Deposit

Prospective tenants will be required to complete a credit referencing application payable whether successful or not. Prior to taking occupation of the property you will be required to pay a deposit of 1½ times the monthly rent, the first months rent in advance and an administration fee.

Directions

