



DOUGLAS BUTLER

ESTATE AGENTS



20 Yew Tree Avenue

Chester, CH1 6HB

£500,000



20 Yew Tree Avenue

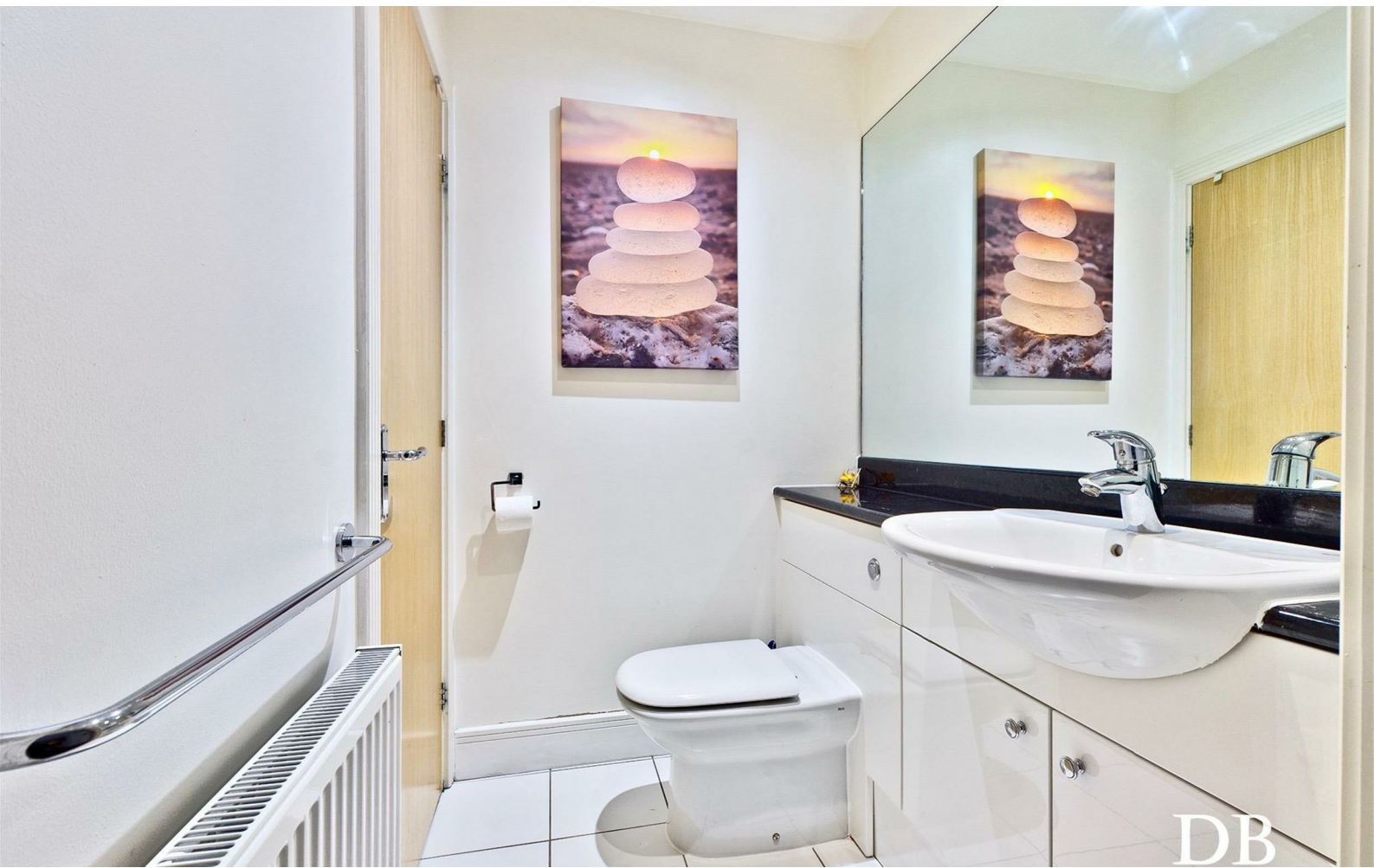


Description

SEARCHING FOR A STYLISH DETACHED HOME IN A POPULAR LOCATION? Welcome to 20 Yew Tree Avenue, tucked away on a good sized corner plot in a very popular and exclusive residential cul-de-sac. This property has been beautifully renovated over the years to create a perfect home for any modern day family. Excellent amenities are moments away including Saughall village boasting a range of local shops, well regarded schools, countryside walks, close access to motorway links and Chester City around a 10/15 minute car journey away. Flooded in natural light, in brief the ground floor benefits from reception hallway, family room/childrens room, utility room, downstairs WC, and an impressive open plan kitchen/lounge with a feature island, some built in appliances and doors taking you out to the garden. The first floor benefits from storage, a family bathroom and four good sized bedrooms, the master offering an en suite. Outside, there is off road parking for many vehicles and access to the detached double garage. The rear garden is mainly laid to lawn with countryside views as a backdrop and seating areas perfect for outdoor entertaining on those warm summer evenings. With gas heating, this property is a must view!

- A STYLISH FOUR BEDROOM DETACHED HOME
- COUNTRYSIDE FIELD VIEWS TO THE REAR
- CLOSE TO EXCELLENT AMENITIES
- TUCKED AWAY ON A GOOD SIZED CORNER PLOT
- OFF ROAD PARKING AND A DOUBLE GARAGE
- DO NOT MISS OUT - A MUST VIEW!

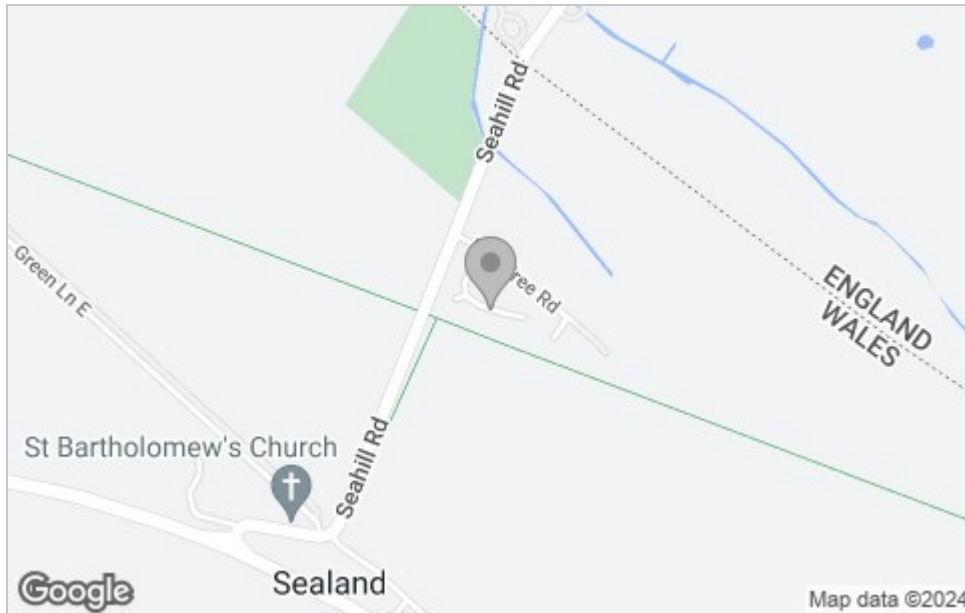




Floor Plan



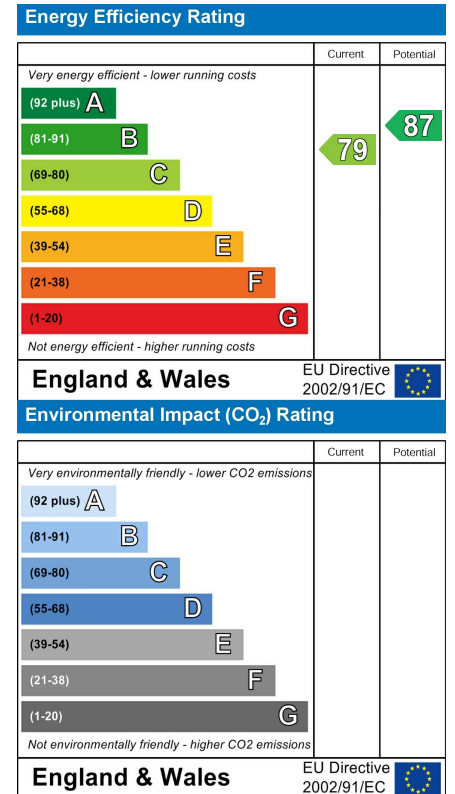
Area Map



Viewing

Please contact our Douglas Butler Sales Office on 01244 563155 if you wish to arrange a viewing appointment for this property or require further information.

Energy Efficiency Graph



These particulars, whilst believed to be accurate are set out as a general outline only for guidance and do not constitute any part of an offer or contract. Intending purchasers should not rely on them as statements of representation of fact, but must satisfy themselves by inspection or otherwise as to their accuracy. No person in this firm's employment has the authority to make or give any representation or warranty in respect of the property.