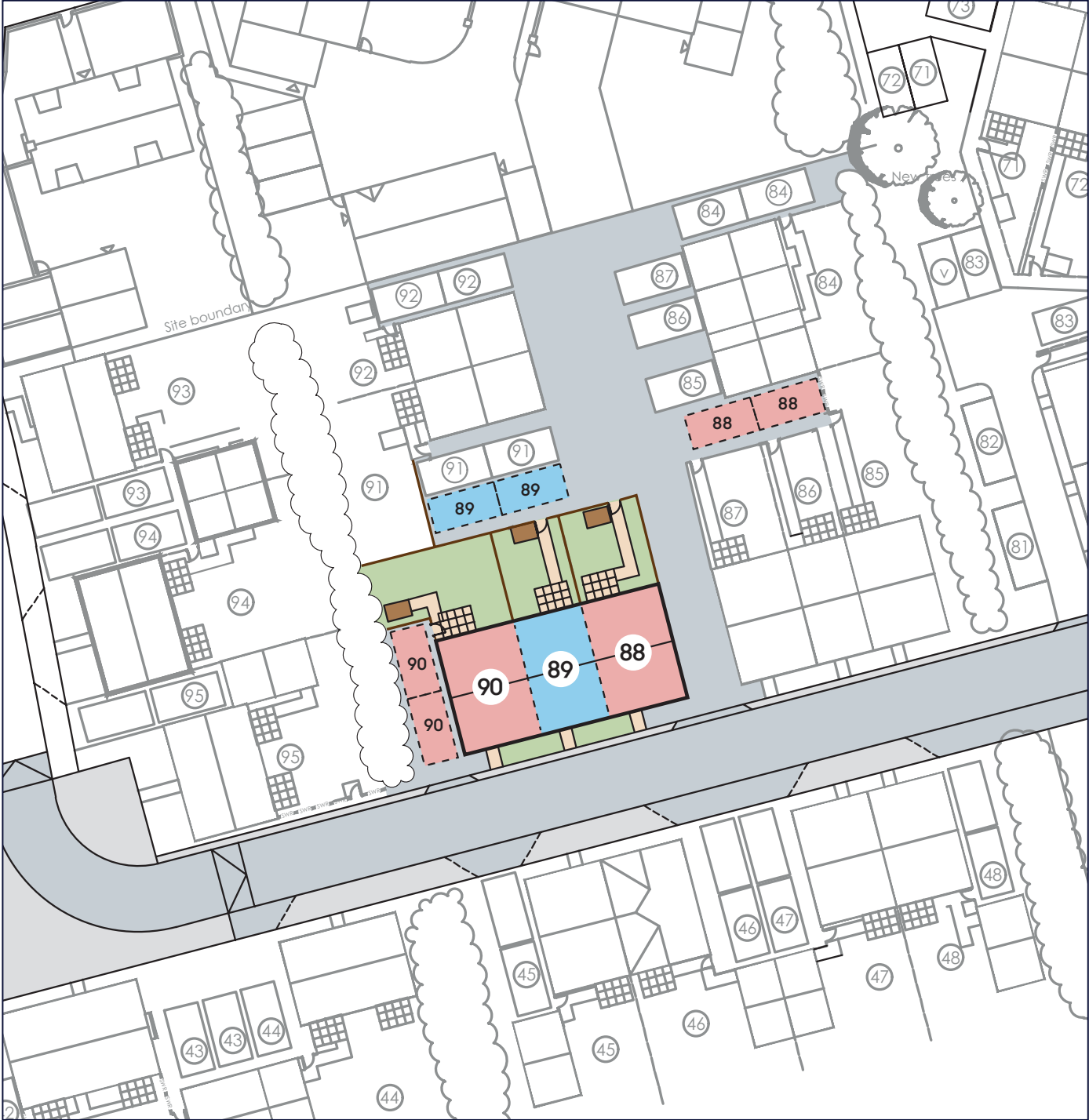


# Site plan

Plots 88 & 90  
3 bedroom house

Plot 89  
2 bedroom house



The prices are correct at the time of print but can be subject to change, speak to a Sales Consultant for further details.  
The floor plans shown are for guidance only and are subject to change during construction. Window and door positions may vary from home to home, and some homes may be left or right handed.

\*Eligibility criteria. Terms and conditions apply. Prices are subject to change and are based on a 35% share of a 2 or 3 bedroom house.  
Speak to our Sales Consultants for further details.



Price start from  
**£60,900**  
for a 35% share\* of  
a 2 bedroom home  
  
No stamp duty for  
first time buyers

## Ladywell Meadows Chulmleigh

A fantastic opportunity for local people to purchase a new home in the pretty village of Chulmleigh.

Chulmleigh is situated within a conservation area, and has good links to Exeter and Barnstaple via the A377 and the historical Tarka Line.

Contact us for more information

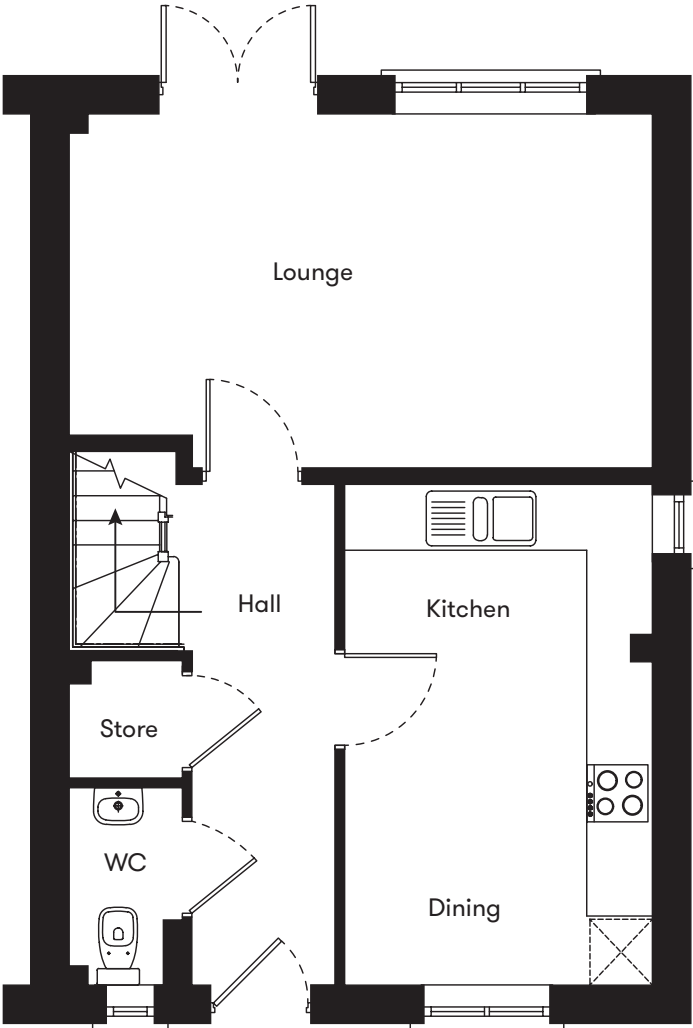
Telephone: 01752 856037  
Email: [newhomes@livewest.co.uk](mailto:newhomes@livewest.co.uk)

**LiveWest**  
A home for everyone

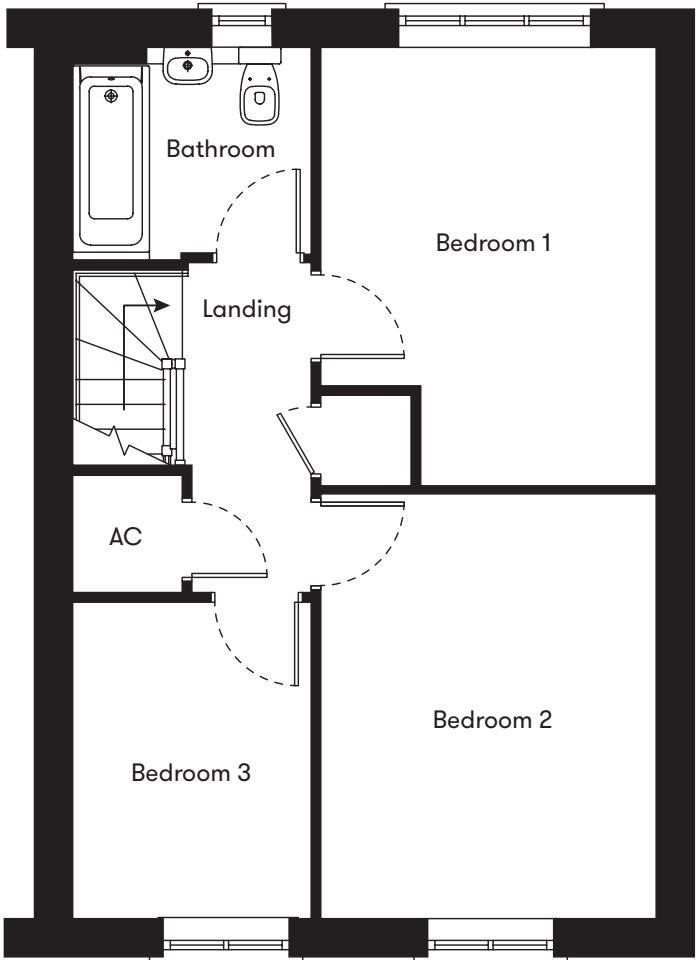
Chulmleigh has a strong community and welcoming feel to it, hosting a variety of musical and theatrical events and has a range of welcoming inns the whole family can enjoy.

**LiveWest**  
A home for everyone

# Floor plan



Ground Floor



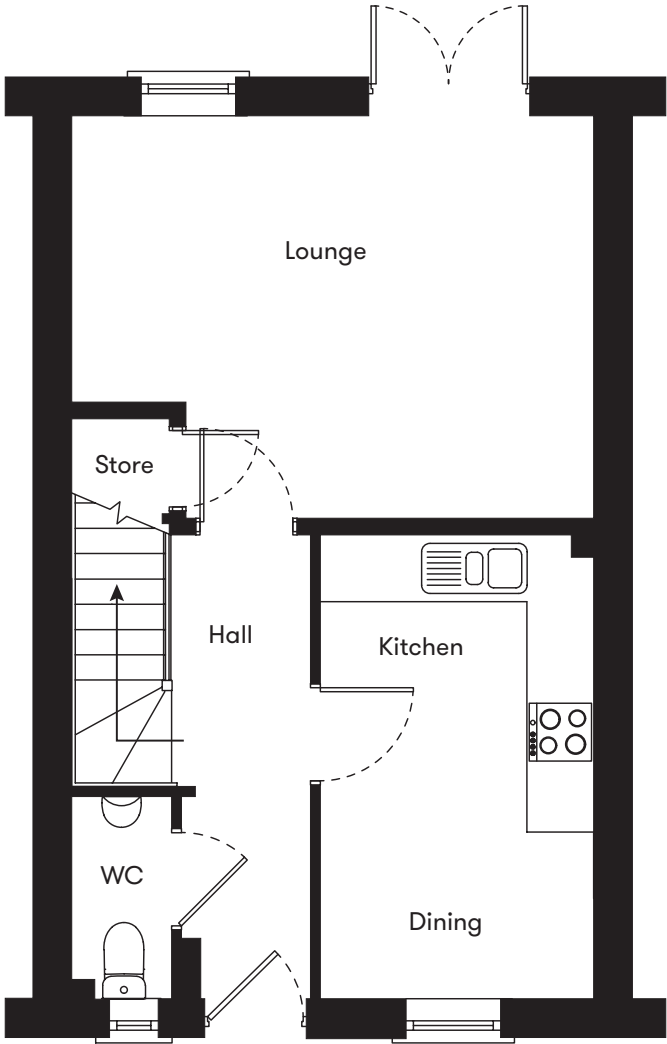
First Floor

Plots  
88 & 90  
3 Bedroom Houses

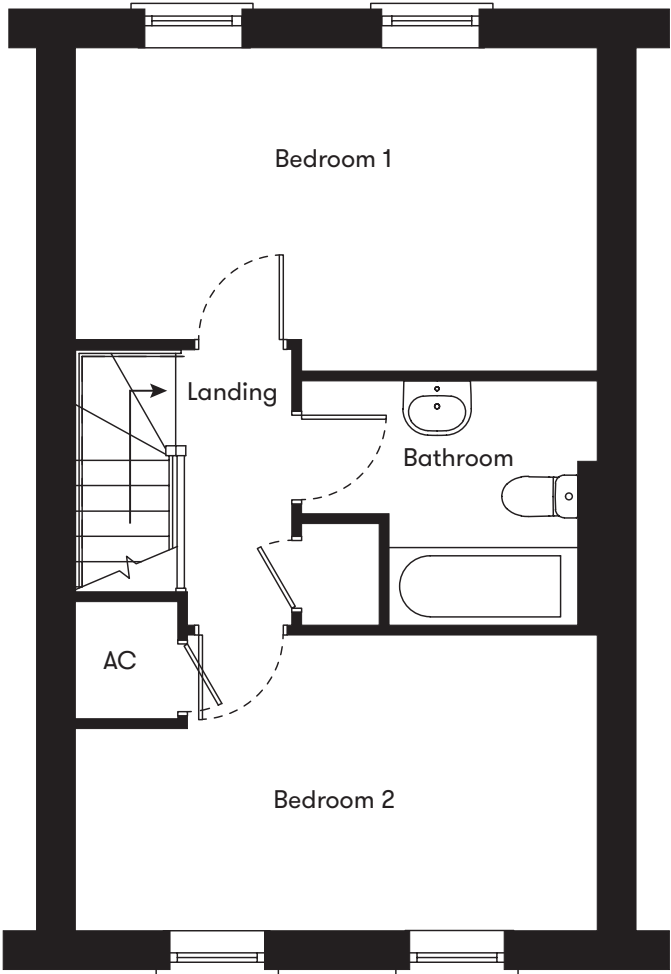
Plot	House type	Open Market Value	35% Share	Rent*
88	3 bedroom end terrace house with 2 parking spaces	£199,000	£69,650	£276.95
90	3 bedroom end terrace house with 2 parking spaces	£201,500	£70,525	£280.33

\*Including buildings insurance. Service charge to be confirmed.

# Floor plan



Ground Floor



First Floor

Plot 89  
2 Bedroom House

Plot	House type	Open Market Value	35% Share	Rent*
89	2 bedroom mid terrace house with 2 parking spaces	£174,000	£60,900	£242.63

\*Including buildings insurance. Service charge to be confirmed.

Contact us for more information

Telephone: 01752 856037  
Email: [newhomes@livewest.co.uk](mailto:newhomes@livewest.co.uk)



Contact us for more information

Telephone: 01752 856037  
Email: [newhomes@livewest.co.uk](mailto:newhomes@livewest.co.uk)

