

EMSLEY  MAVOR  
ESTATE AGENTS

...your home is where our heart is



**Shaw Crescent**  
Huby, York, YO61 1JF  
£550,000



## Shaw Crescent

Huby, York, YO61 1JF

STYLE - Detached Four Bedroom Family Home

HIGHLIGHTS - Luxurious Village Home with Rural Views, Stylishly Decorated Throughout, Lovely Garden

THREE WORDS - Move Straight In!

### Luxurious Village Home with Rural Views

#### Overview

Welcome to 23 Shaw Crescent, Huby — a simply stunning 4-bedroom detached home that epitomises luxurious village living. Extensively renovated and extended in 2021, this property boasts a meticulously appointed interior and glorious far-reaching rural views to the rear. With a blend of modern elegance and practical family living, this home is a true gem.

#### Step Inside

As you enter through the impressive 21'2" long reception hall, adorned with oak flooring, you are greeted by a sense of warmth and sophistication. The hall leads to a cloakroom/wc and three versatile reception rooms: a cosy sitting room with a wood-burning stove, a formal dining room/snug, and a flexible family room. The heart of the home is undoubtedly the superbly appointed Nobilia dining kitchen. This space offers generous storage, extensive worktop areas, and a range of integrated appliances, all complemented by underfloor heating. The larger-than-average utility room ensures that practicality is not compromised.





### First Floor

The first-floor landing guides you to the stunning principal bedroom, complete with built-in wardrobes and breathtaking views towards Crayke. The luxuriously appointed "Narnia" style en-suite bathroom features underfloor heating, a bath, and a separate walk-in shower. The property also includes two further double bedrooms, one single bedroom, and a newly appointed family bathroom, ensuring ample space for the entire family.

### Outside

Externally, the block-paved driveway provides convenient parking and access to an integral storage garage. The lawned rear garden is a haven of tranquillity, featuring a paved seating area perfect for alfresco dining while enjoying the fabulous rural views

### Additional Information

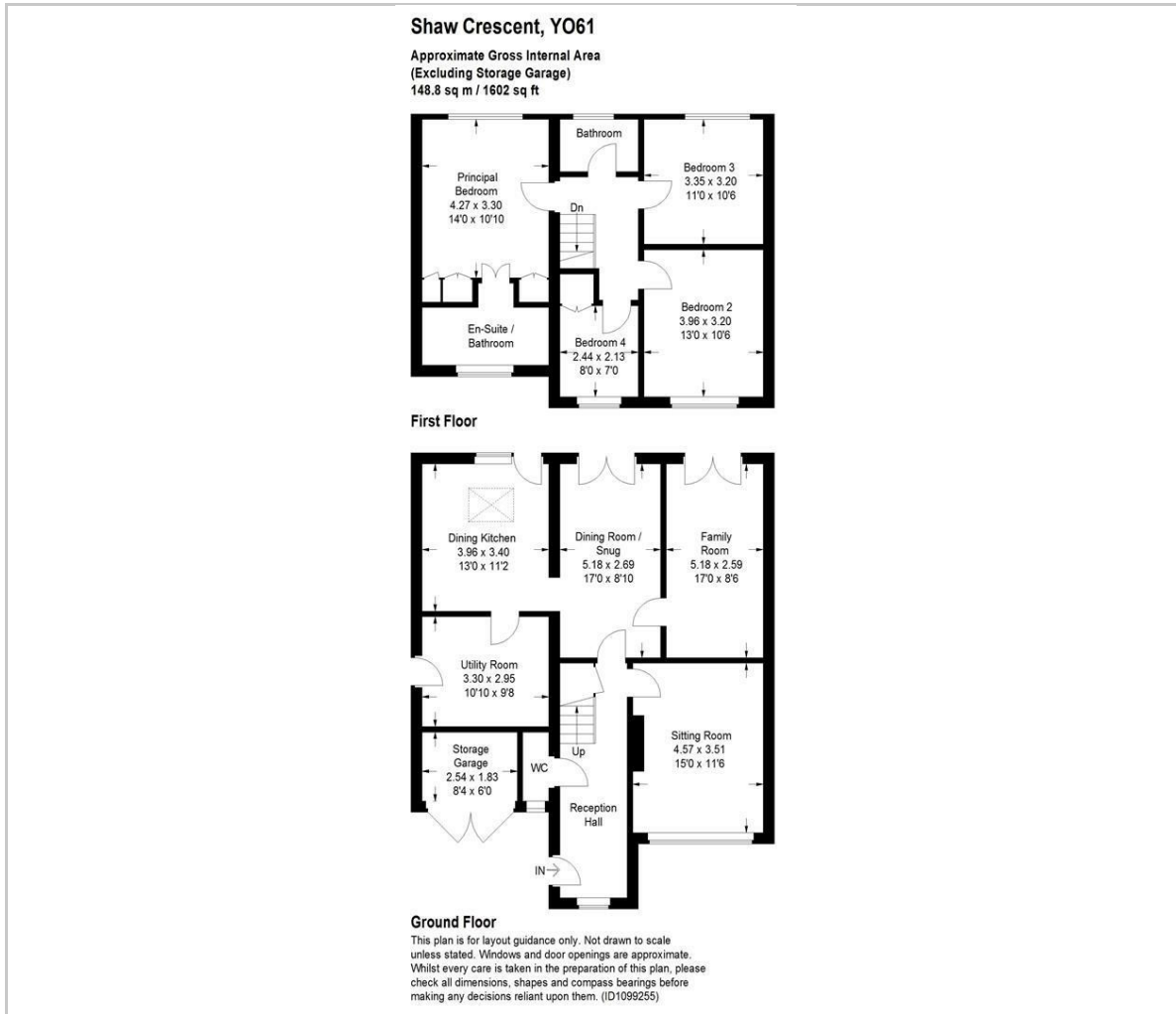
- Air source heat pump
- Underfloor heating in the dining kitchen, utility room, and dining room/snug
- Radiators throughout the rest of the home
- Oak internal doors
- UPVC double glazing
- Mains drainage
- Council Tax Band: D

### Local Life in Huby

Huby offers a picturesque village lifestyle with excellent local amenities and stunning countryside walks. This property is perfect for those seeking a blend of luxury and rural charm. Don't miss the opportunity to make 23 Shaw Crescent your new home.



## Floor Plan



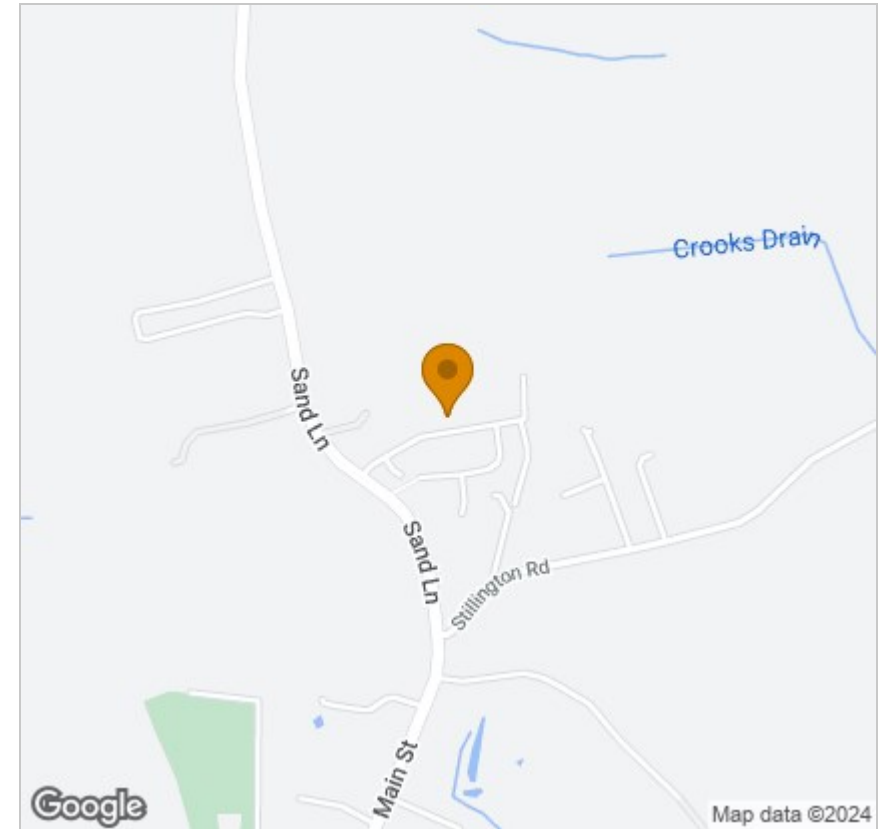
## Viewing

Please contact our Emsley Mavor Estate Agents Office on 01347823579 if you wish to arrange a viewing appointment for this property or require further information.

These particulars, whilst believed to be accurate are set out as a general outline only for guidance and do not constitute any part of an offer or contract. Intending purchasers should not rely on them as statements of representation of fact, but must satisfy themselves by inspection or otherwise as to their accuracy. No person in this firm's employment has the authority to make or give any representation or warranty in respect of the property.

1 Tollbooth Building Market Place, Easingwold, North Yorkshire, YO61 3AB  
 Tel: 01347823579 Email: info@emsleymavor.co.uk http://emsleymavor.co.uk

## Area Map



## Energy Efficiency Graph

