

EMSLEY  MAVOR
ESTATE AGENTS

...your home is where our heart is



Farefield Close

Dalton, Thirsk, YO7 3FD

£395,000



4



2



1



C

Farefield Close

Dalton, Thirsk, YO7 3FD

STYLE - Stylish Detached Family Home

HIGHLIGHTS - Beautifully Decorated Throughout, Underfloor Heating to Ground Floor, Open Views

THREE WORDS - Elegant. Family. Lifestyle.

STYLISH FAMILY HAVEN WITH SCENIC VIEWS

Welcome to 5 Farefield Drive, Dalton YO7—a beautifully styled detached family home nestled within a charming development, offering far-reaching open views that captivate and inspire. This residence is a harmonious blend of tasteful décor and elegant flooring, creating a warm and inviting atmosphere throughout.

STEP INSIDE

Step inside to discover a spacious dining kitchen that stretches across the back of the property. Bifold doors seamlessly connect the indoor space to the patio and garden beyond, perfect for alfresco dining and entertaining. The kitchen itself is a modern masterpiece, featuring sage-coloured base and wall units complemented by sleek worktops. Culinary enthusiasts will appreciate the five-ring induction hob, double oven, and integrated appliances, including a microwave and dishwasher. The undermount sink, set into the granite, adds a touch of sophistication.

The sitting room serves as a cosy retreat, with a feature panelled wall and ample space for comfortable seating. It offers lovely views of the front garden, making it an ideal spot to unwind after a busy day. A convenient cloakroom and underfloor heating throughout the ground floor enhance the home's comfort and functionality.





UPSTAIRS

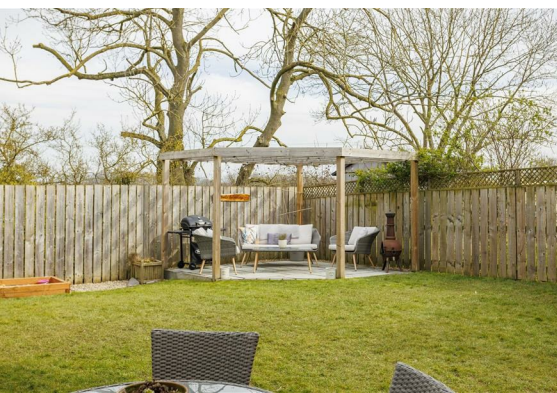
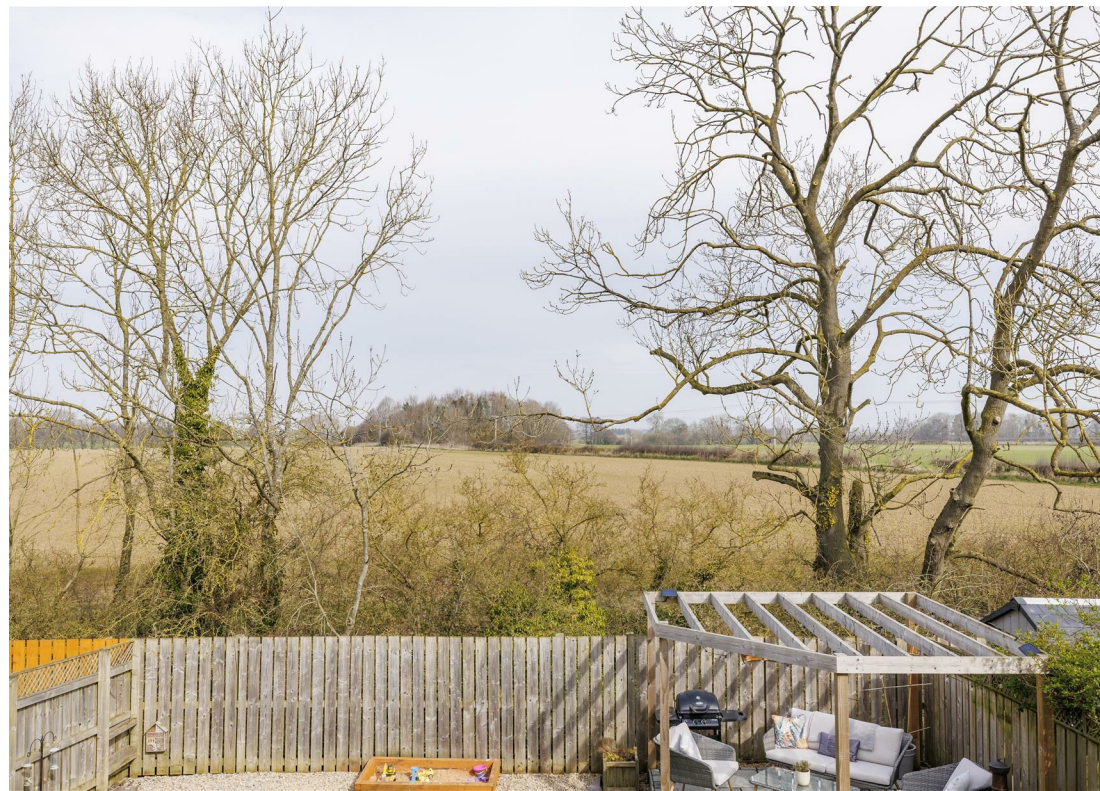
Upstairs, the master bedroom boasts a smart ensuite, while three further generous bedrooms provide ample space for family and guests. Two of these bedrooms offer breathtaking open views, ensuring a serene start to each day. The modern family bathroom completes the upper level.

OUTSIDE

Outside, the garden is a true delight, featuring a lovely pergola and seating area, a recently extended patio, and established borders that edge the lush lawn. A wooden shed offers practical external storage. There is off street parking for numerous cars.

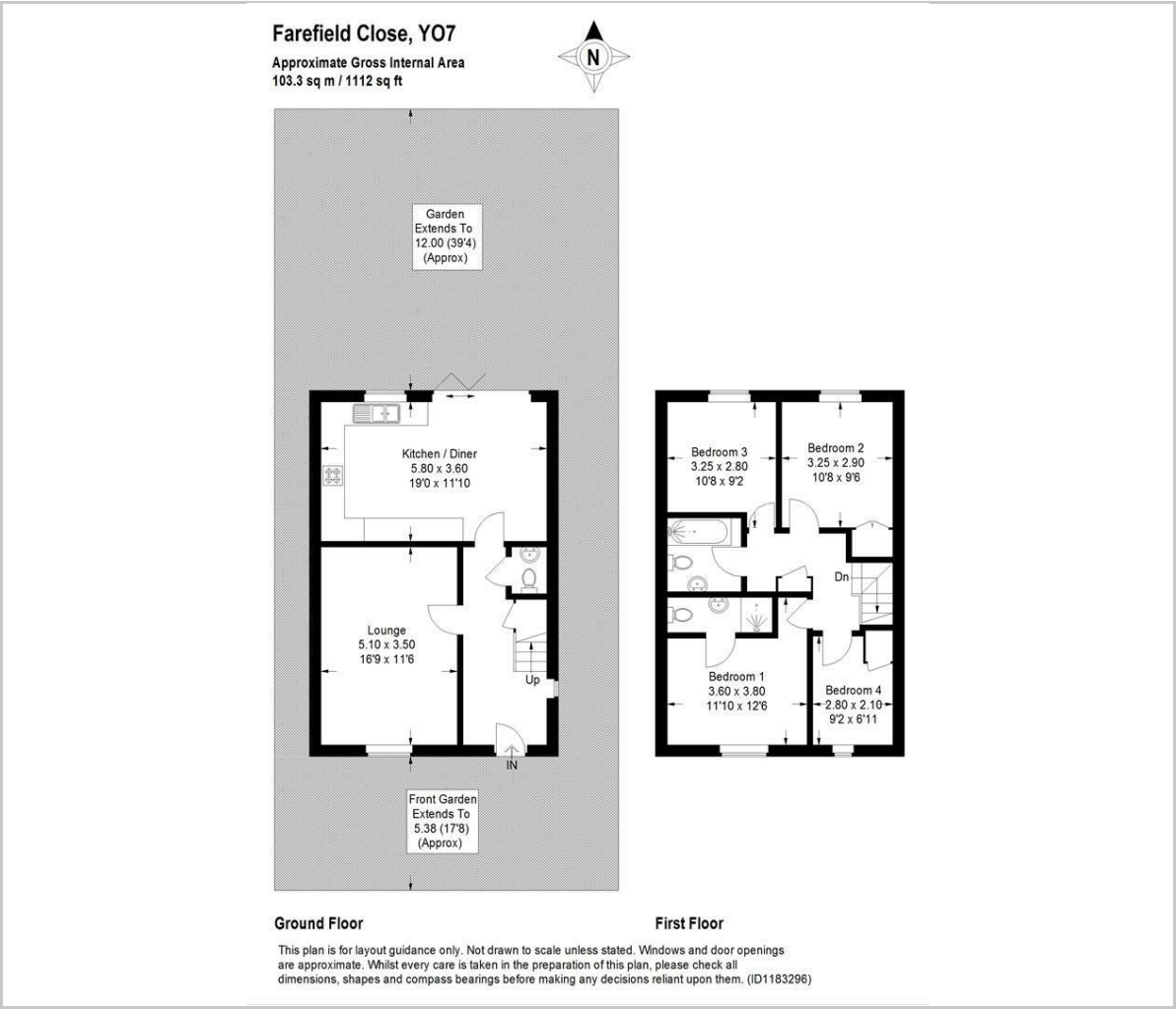


This home is equipped with underfloor heating on the ground floor, double glazing, and mains gas and water services, ensuring comfort and efficiency throughout. Situated in the popular village of Dalton, this property is finished to an exceptionally high standard, offering excellent internal and external space with idyllic views. Don't miss your chance to make this stylish family haven your own.



Dalton is an attractive village nestled in the picturesque countryside of North Yorkshire and, surrounded by the scenic landscapes of the North Yorkshire Moors National Park, the village makes an ideal destination for outdoor enthusiasts, offering opportunities for hiking and cycling etc. It is viewed as an excellent commuter village, being in close proximity to both the A19 and A1(M) arterial routes, allowing simple commutes to Harrogate, York, Leeds and Middlesbrough. The village further benefits from close proximity to a number of excellent schools, both state and private.

Floor Plan



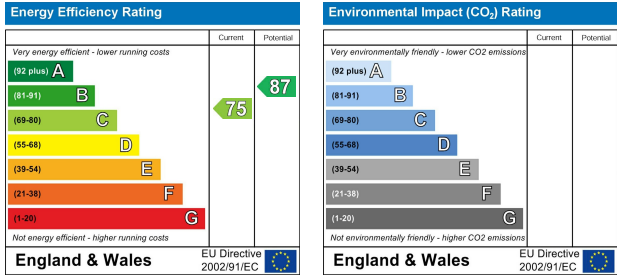
Viewing

Please contact our Emsley Mavor Estate Agents Office on 01347823579 if you wish to arrange a viewing appointment for this property or require further information.

Area Map



Energy Efficiency Graph



These particulars, whilst believed to be accurate are set out as a general outline only for guidance and do not constitute any part of an offer or contract. Intending purchasers should not rely on them as statements of representation of fact, but must satisfy themselves by inspection or otherwise as to their accuracy. No person in this firms employment has the authority to make or give any representation or warranty in respect of the property.

1 Tollbooth Building Market Place, Easingwold, North Yorkshire, YO61 3AB
Tel: 01347823579 Email: info@emsleymavor.co.uk http://emsleymavor.co.uk