



24 Oakdale Grove, Shipley, BD18 1NX
£375,000

Offered with NO ONWARD CHAIN is this modern FIVE BEDROOM DETACHED family home. Set over three floors the property offers spacious living in the popular residential location of Wrose. Internal viewing is essential to fully appreciate all that is on offer.

EPC RATING - C

COUNCIL TAX BAND - F

GROUND FLOOR

ENTRANCE HALLWAY

Spacious entrance hallway with a central heating radiator and stairs to the first floor.

LOUNGE



Good size main reception room with two double glazed windows and a central heating radiator.

DINING KITCHEN



A fabulous space which forms the hub of this family home. The kitchen area is fitted with wall and base units to three sides with a granite work surface over. There is a dining area with island unit which sits in a light and bright position with glazed double doors extending to the ceiling. Tiled flooring, a central heating radiator and further double glazed window.

UTILITY ROOM

Useful utility space with fitted base unit and granite work top over incorporating a stainless steel sink and mixer tap. Tiled flooring, a double glazed window and doors leading to the garage and side elevation.

WC



Ground floor cloakroom with a fitted hand wash basin and WC in white. Double glazed window and a central heating radiator.

INTEGRAL GARAGE

Accessed from the utility room and having an up and over to the front elevation an integral garage providing useful storage and parking options.

FIRST FLOOR

LANDING

Large landing area with a double glazed window and a central heating radiator.

BEDROOM



Large double bedroom to the front elevation with two double glazed windows and a central heating radiator.

EN-SUITE



Low flush WC, hand wash basin and large shower cubicle with glass sliding door. Tiled flooring and a heated towel rail.

BEDROOM



To the rear elevation with a double glazed window and a central heating radiator.

BEDROOM



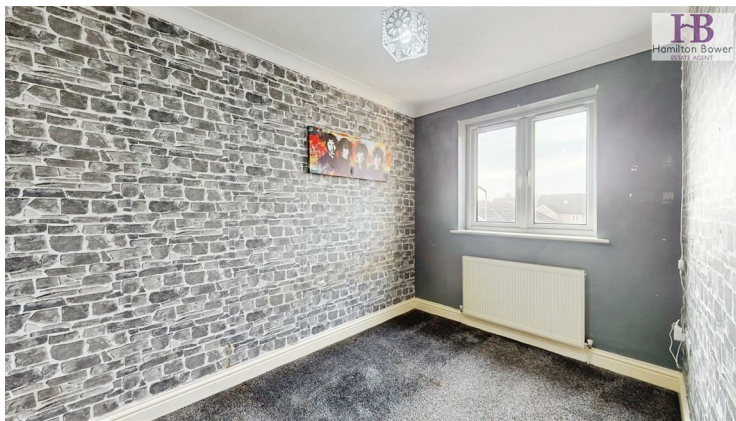
To the rear elevation with a double glazed window and a central heating radiator.

BATHROOM



Fitted three piece bathroom suite in white comprising of a jacuzzi bath, low flush WC and hand wash basin. Tiled flooring, a double glazed window and a heated towel rail.

BEDROOM



To the front elevation with a double glazed window and a central heating radiator.

SECOND FLOOR

LANDING

Double glazed window and a central heating radiator.

BEDROOM



Large top floor bedroom with good quality wood flooring, a double glazed window, two Velux windows, a central heating radiator and eaves storage.

EN-SUITE



Stylish fitted three piece bathroom suite in white with low flush WC, hand wash basin and a bath with hand held shower. Tiled flooring and a Velux window.

EXTERNAL



To the front elevation a driveway leading to the garage and a lawn. To the rear, a pleasant enclosed garden with raised patio and an array of mature plants shrubs and hedges.

