



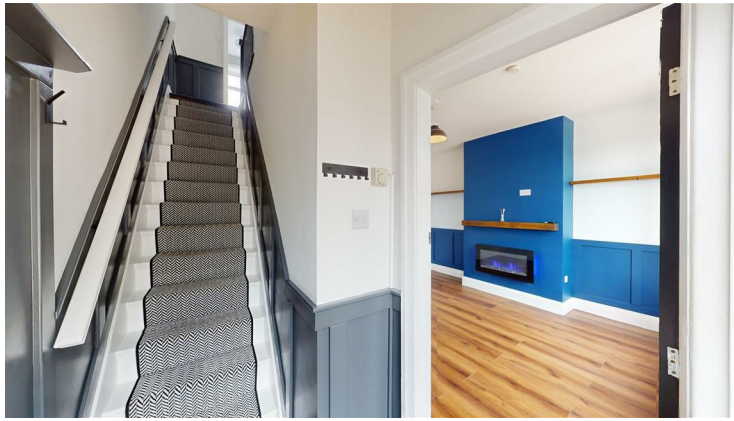
## 217 Beacon Road, Wibsey, Bradford, West Yorkshire, BD6 3DR Offers Over £190,000

HAMILTON BOWER are pleased to offer FOR SALE this RECENTLY MODERNISED THREE BEDROOM TERRACE PROPERTY with off-street parking located in Bradford - BD6. With a new kitchen and bathroom, fresh flooring and decoration throughout, and with a driveway offering multiple off-street parking spaces, we expect this property to appeal to a wide range of prospective buyers. Internally comprising; entrance, kitchen, lounge, three first floor bedrooms, bathroom and loft. Externally the property has a driveway to front and a garden to the rear complete with lawn and decking. The property has recently undergone a full refurbishment by the current owner resulting in a fresh, contemporary feel throughout - it is also being offered with NO ONWARD SALE CHAIN.

FOR MORE INFORMATION PLEASE CONTACT HAMILTON BOWER TODAY

## GROUND FLOOR

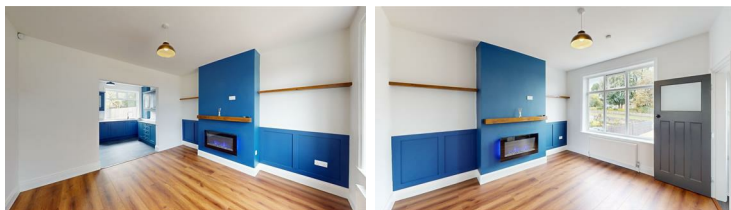
### Entrance



### Kitchen



### Lounge



## FIRST FLOOR

### Primary Bedroom



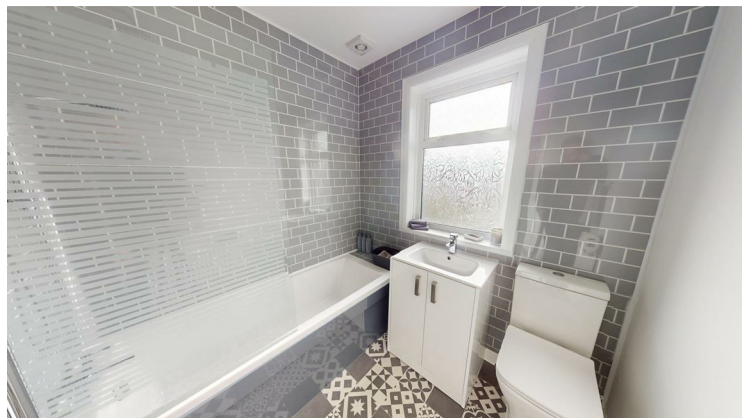
### Bedroom



### Bedroom



### Bathroom



## EXTERNAL



Front

Rear



