



**Apt 705, VM1 Salts Mill Road, Shipley, Bradford, West Yorkshire, BD17 7EE**  
**Asking Price £115,000**

HAMILTON BOWER are pleased to offer FOR SALE this well-presented ONE BEDROOM DUPLEX APARTMENT located in Shipley, Bradford. With an allocated parking space, rental potential and open-plan living, we expect this property to be popular with a wide range of prospective buyers. Internally comprising; entrance, kitchen, dining living, wc, storage, bedroom, bathroom, balcony. The property has an secure intercom entry system, an allocated parking space and finally a balcony offering outdoor seating with views.

FOR MORE INFORMATION PLEASE CONTACT HAMILTON BOWER TODAY

## INTERNAL

### Kitchen

Modern kitchen with tiled flooring and integrated appliances - dishwasher, fridge/freezer, oven, ceramic hob and extractor hood.

### Dining Living



Open-plan dining living area with full-length windows and door to the balcony allowing for an abundance of natural light.

### WC



WC with wash basin and tiled flooring.

### Bedroom



Generous bedroom to the first floor with full-length windows allowing for a great view and an abundance of natural light. Offering space for a large bed, side tables and wardrobes.

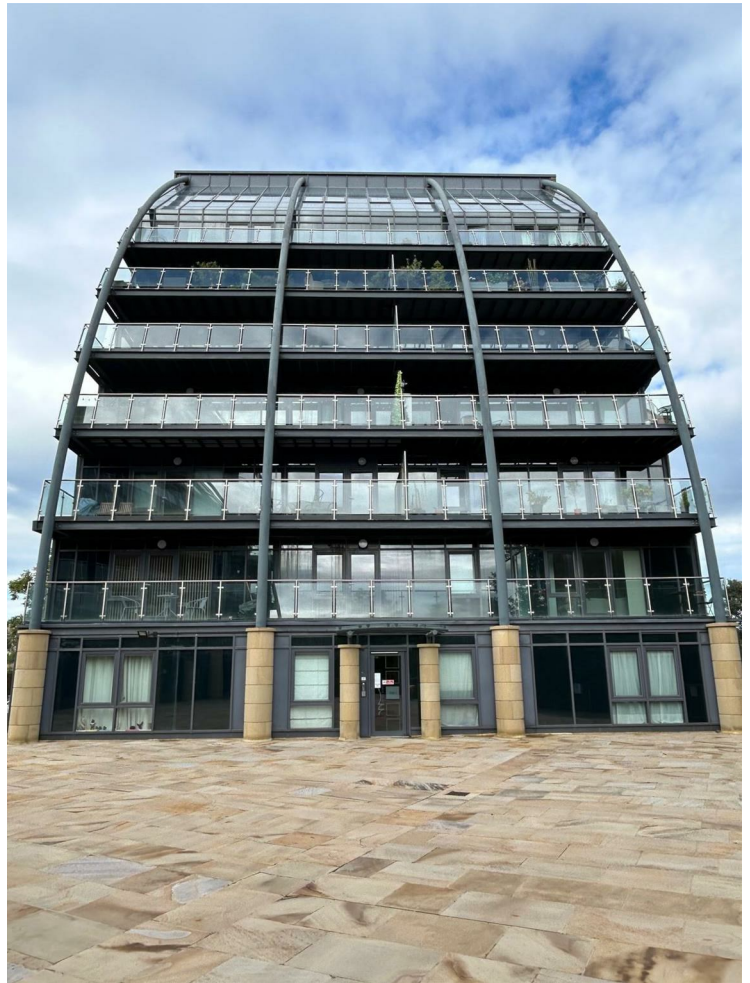
### Bathroom



Bathroom with tiled flooring and matching white three-piece

suite as seen - bath with overhead shower, wc, wash basin and towel rail.

## EXTERNAL



### Views



Balcony offering space for outdoor seating with far-reaching views over Aire Valley.

