

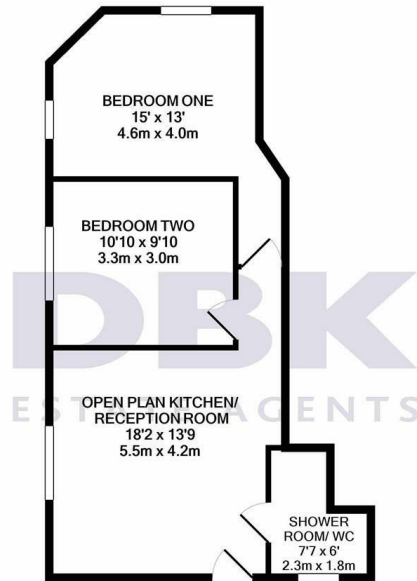


TO LET

Hanworth Road, Hounslow, TW3 3TY
£1,900 Per Calendar Month

DBK
ESTATE AGENTS

- Available To Rent Immediately! ▪ All Bills Included!
- First Floor Apartment ▪ Two Double Bedrooms
- Open Plan Kitchen/ Reception Room ▪ Shower Room/ WC
- Gas Central Heating ▪ Double Glazed Windows
- Walking Distance to Hounslow Overground Station ▪ Hounslow High Street within Short Walk



TOTAL APPROX. FLOOR AREA 466 SQ. FT. (43.3 SQ.M.)
 Whilst every attempt has been made to ensure the accuracy of the floor plan contained here, measurements of doors, windows, rooms and any other items are approximate and no responsibility is taken for any error, omission, or mis-statement. This plan is for illustrative purposes only and should be used as such by any prospective purchaser. The services, systems and appliances shown have not been tested and no guarantee as to their operability or efficiency can be given.
 Made with Metropix ©2020

THE PROPERTY

Available To Rent Immediately! ALL BILLS INCLUDED!

This beautifully presented first-floor apartment offers modern living in an exceptionally convenient location. Designed to provide both comfort and practicality, the property features two generously sized double bedrooms, ideal for professionals, couples, or small families seeking a well-connected home.

Stepping inside, you are greeted by a bright and spacious open-plan kitchen and reception area, creating a warm and welcoming environment perfect for everyday living and entertaining. The contemporary kitchen is fitted with modern units and ample storage, ensuring both style and convenience. A sleek shower room with WC adds to the home's modern appeal.

The apartment further benefits from gas central heating and double-glazed windows throughout, offering energy efficiency and year-round comfort.

Perfectly positioned for commuters, the property is just a short walk from Hounslow Overground Station, providing swift transport links into Central London and surrounding areas. Hounslow High Street is also within easy walking distance, placing a wide range of shops, cafés, restaurants, and amenities right on your doorstep.