



pearson  
ferrier®



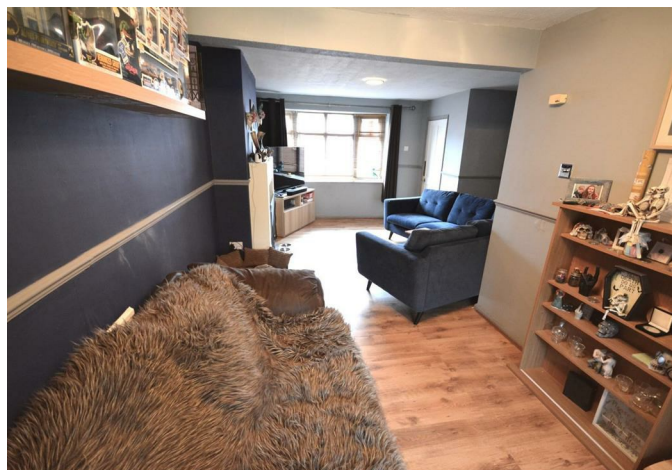
24 CHEVIOT CLOSE  
Ramsbottom, BL0 9LL  
£280,000

## 24 CHEVIOT CLOSE

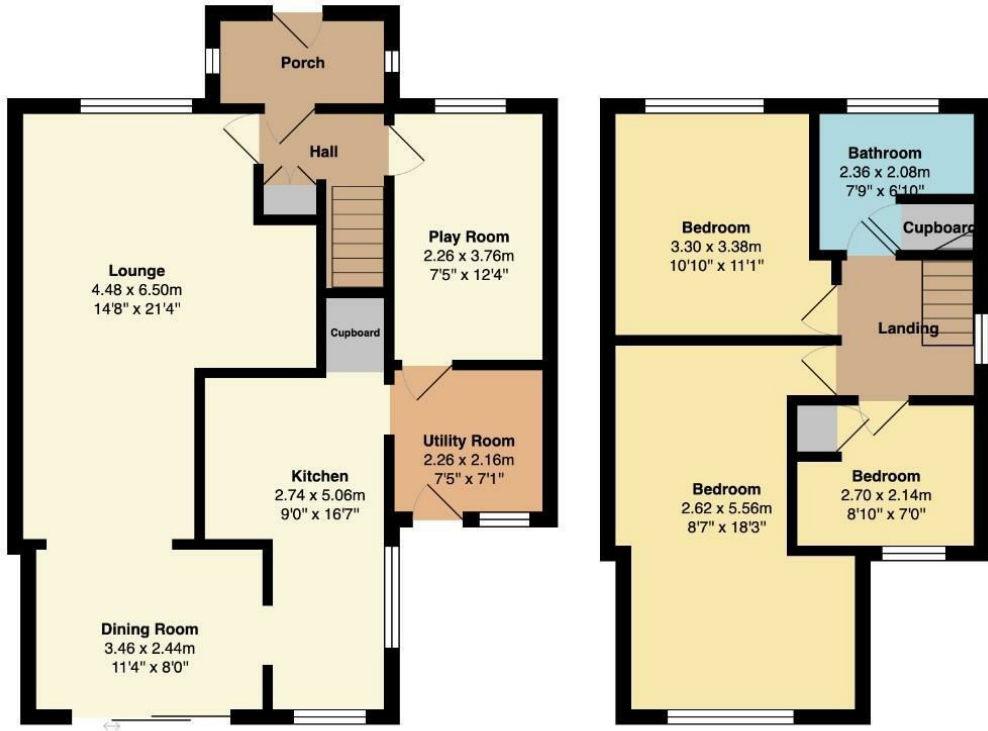
### Property at a glance

- extended modern semi detached
- three bedrooms
- spacious interior
- popular location/head of cul-de-sac
- ample gardens and parking
- gas c/heating & d.glazed

Cheviot Close, Ramsbottom is a smartly presented, extended modern three bedroom semi detached house, located at the head of this cul-de-sac in this popular residential location, within walking distance to local schools and shops and a short distance to the town centre and onward drive to the motorway network. The house has been extended significantly from the original design and boasts a spacious interior and benefits from double glazing and is warmed by gas fired central heating and enjoys a south westerly facing generously sized rear garden. The accommodation briefly comprises; entrance porch, inner hall, games room, large L-shaped lounge open through to a dining room, kitchen and utility room, first floor, three bedrooms and bathroom. Outside there is a block paved driveway and lawned garden forecourt and enclosed rear patio gardens. Council Tax Band D/Leasehold property unexpired term of 999 years



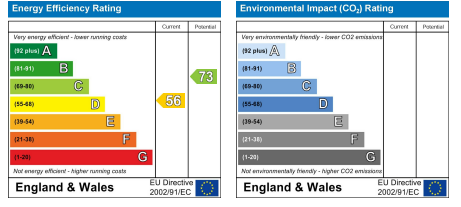




**Ground Floor**  
Area: 68.0 m<sup>2</sup> ... 732 ft<sup>2</sup>

**First Floor**  
Area: 44.7 m<sup>2</sup> ... 481 ft<sup>2</sup>

Total Area: 112.7 m<sup>2</sup> ... 1213 ft<sup>2</sup>



Ramsbottom Office  
11 Bolton Street, Ramsbottom, BL0 9HU  
Telephone: 01706 822630  
Fax: #  
Email: ramsbottom@pearsonferrier.co.uk

[www.pearsonferrier.co.uk](http://www.pearsonferrier.co.uk)



All statements contained in these particulars are for indicative purposes only and are made without responsibility on the part of Pearson Ferrier and the vendors of this property and are not to be relied on as statements or representations of fact. Potential purchasers should satisfy themselves by inspection or otherwise as to the accuracy of such details contained in these particulars.