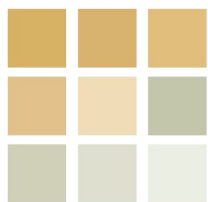




pearson
ferrier®



LAND LYING TO THE SOUTH OF 5 STUBBINS LANE

Bury, BL0 0PU

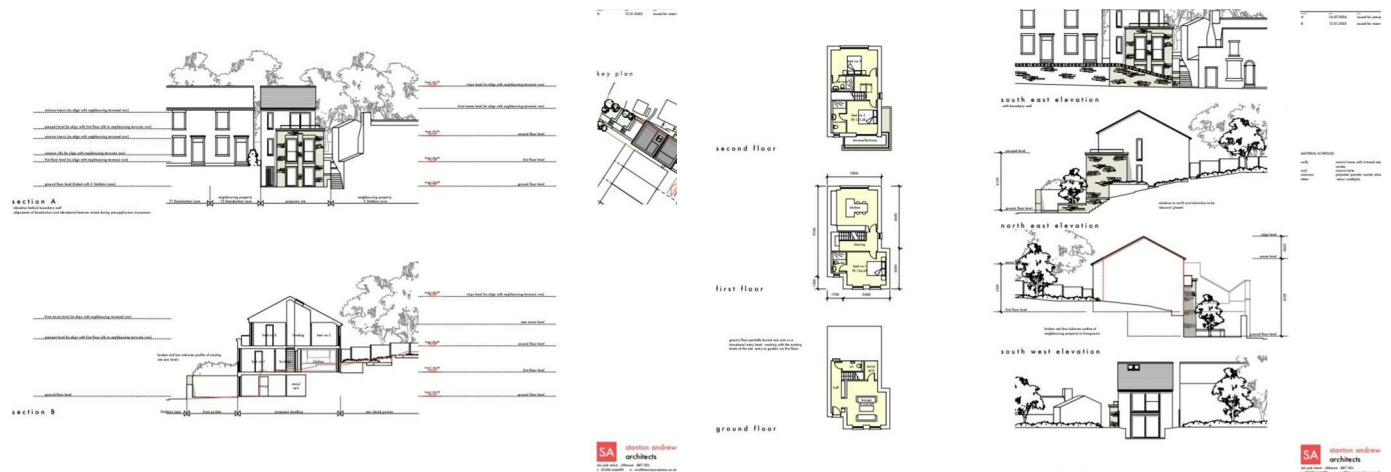
Asking Price £120,000

LAND LYING TO THE SOUTH OF 5 STUBBINS LANE

Property at a glance

- FREEHOLD LAND WITH PLANNING FOR A DETACHED HOME
- IDEAL SELF BUILD OR DEVELOPMENT
- THREE STOREY PROPERTY WITH 3 EN SUITES
- CLOSE TO RAMSBOTTOM CENTRE

Freehold land with planning granted for a three storey detached home, a short walk from Ramsbottom centre. The property is set to comprise three bedrooms (all en suite), lounge, kitchen/diner, hallway and downstairs W.C.. The plot size is approx. 185 SQ MT in size. Approval of reserved matters was granted in March 2025 by Bury council (planning ref 71575), following outline permission which was previously granted (planning ref 67718). All enquiries regarding planning are to be directed to Bury MBC. It is well placed for local shops being approx. 1/4 mile from Ramsbottom centre with a good selection of supermarkets, boutique shops and the East Lancashire Railway. There are also good primary and secondary schools close by. This is a great opportunity for builders, property developers or someone looking for a self build opportunity.





Ramsbottom Office
11 Bolton Street, Ramsbottom, BL0 9HU
Telephone: 01706 822630
Fax: #
Email: ramsbottom@pearsonferrier.co.uk

www.pearsonferrier.co.uk

All statements contained in these particulars are for indicative purposes only and are made without responsibility on the part of Pearson Ferrier and the vendors of this property and are not to be relied on as statements or representations of fact. Potential purchasers should satisfy themselves by inspection or otherwise as to the accuracy of such details contained in these particulars.

