



pearson  
ferrier®



WEAVERS COTTAGE LEE BROOK ROAD

Rossendale, BB4 8JF

£550,000



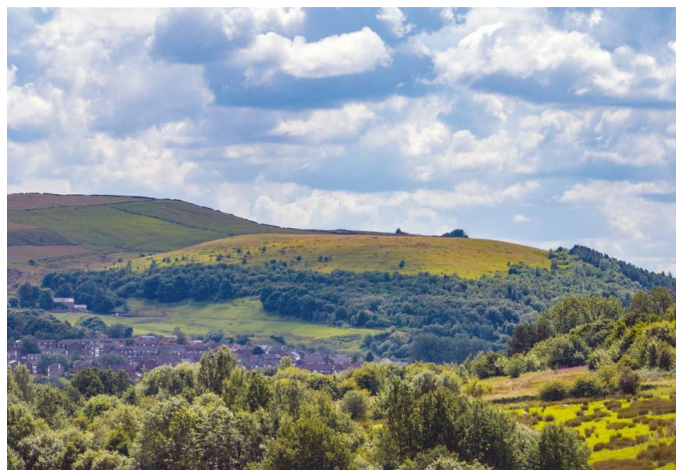
# WEAVERS COTTAGE LEE BROOK ROAD

## Property at a glance

- stunning detached cottage
- three bedrooms
- completely refurbished throughout
- large gardens and grounds
- stunning contemporary interior
- detached garage/studio

Weavers Cottage, Rossendale is a beautifully presented and recently renovated, three bedroom detached period cottage set over 3 floors, tucked away in this secluded position within large gardens and grounds, with detached garage with utility area and wood burning stove (ideal studio room), located within a short drive to the town centre and onwards to the motorway network. Completely restored throughout the house has a stylish and contemporary interior with original features, set behind decorative steel gates designed, built and installed by renowned Blacksmith James Godbold who has also designed and installed an internal spiral staircase, balustrade and decked patio positioned off the living area at first floor level. The house is connected to all mains services, is PVC double glazed and warmed by gas fired central heating. The accommodation briefly comprises; entrance porch with tiled flooring and guests wc/cloaks, farmhouse type kitchen, first floor, spacious living room with Juliet balcony, sitting room/bedroom three, second floor, two double bedrooms and stunning four piece bathroom suite. Outside there are sliding steel entrance gates leading to an enclosed parking area and a detached stone built garage with utility area, ideal for use as a garden room/studio, large gardens with lawns and mature borders and rear enclosed paved patio with water feature.

Council tax Band D/Freehold Property





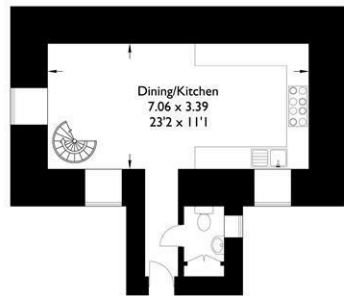
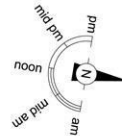


# Weavers Cottage

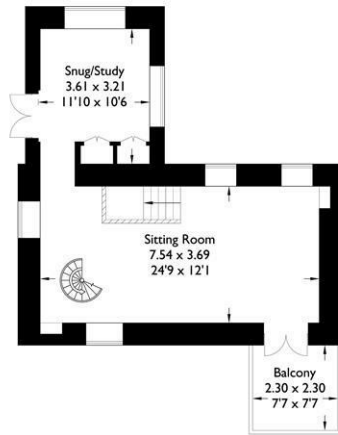
Approximate Gross Internal Area : 111.38 sq m / 1198.88 sq ft

Outbuilding : 22.31 sq m / 240.14 sq ft

Total : 133.69 sq m / 1439.02 sq ft



Ground Floor



First Floor

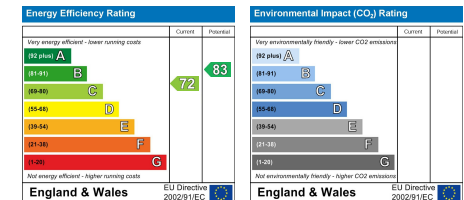


Second Floor



Outbuilding

For illustrative purposes only. Not to scale.  
Whilst every attempt was made to ensure the accuracy of the floor plan,  
all measurements are approximate and no  
responsibility is taken for any error.



Ramsbottom Office  
11 Bolton Street, Ramsbottom, BL0 9HU

Telephone: 01706 822630

Fax: #

Email: ramsbottom@pearsonferrier.co.uk

[www.pearsonferrier.co.uk](http://www.pearsonferrier.co.uk)



All statements contained in these particulars are for indicative purposes only and are made without responsibility on the part of Pearson Ferrier and the vendors of this property and are not to be relied on as statements or representations of fact. Potential purchasers should satisfy themselves by inspection or otherwise as to the accuracy of such details contained in these particulars.