



pearson  
ferrier®



6 ALDERWOOD GROVE  
Ramsbottom, BL0 0HQ  
£530,000



## 6 ALDERWOOD GROVE

### Property at a glance

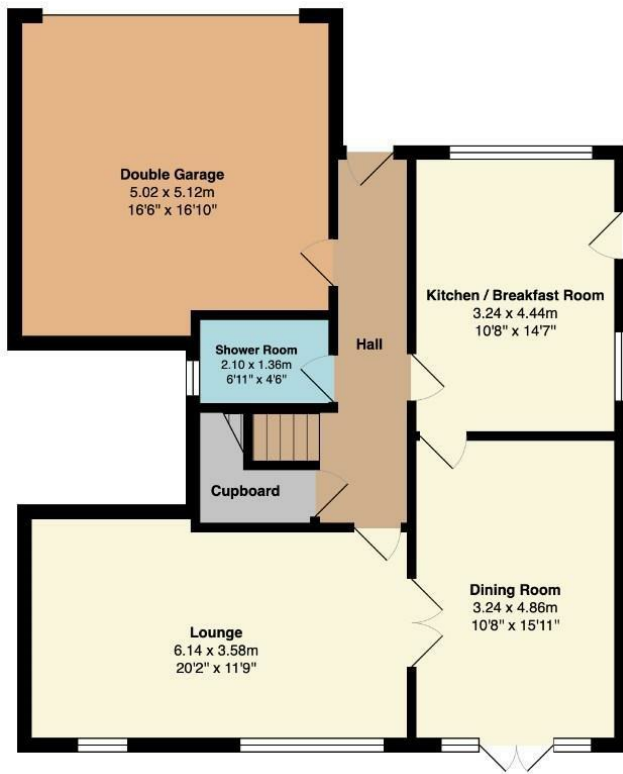
- modern detached house
- four bedrooms
- immaculate interior
- head of cul-de-sac
- no onward chain
- large gardens
- sought after location

Alderwood Grove, Edenfield is an immaculately presented, four bedroom detached house, offered with no onward chain, located at the head of a small cul-de-sac in the heart of this highly regarded village setting, within easy reach of local schools, shops and bus routes and a short drive to Ramsbottom and Rawtenstall town centres, the motorway network and nearby New Hall Hey Retail Park. The house benefits from gas fired central heating and is double glazed, the accommodation briefly comprises; entrance hall with access into the integral garage, living room, dining room, breakfast kitchen and shower room, first floor, four bedrooms and a family bathroom. Outside there is a lawned garden forecourt and driveway leading into the double garage, to the rear there are generously sized lawned gardens, borders and patio adjoining neighbouring fields enjoying a westerly aspect. Freehold/Council Tax Band E

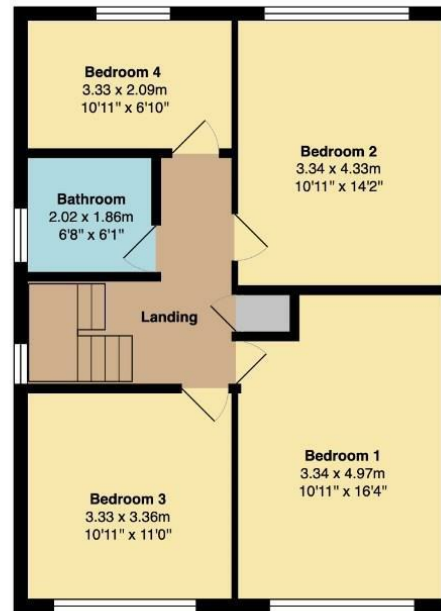






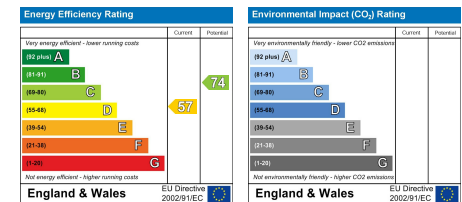


**Ground Floor**  
Area: 93.7 m<sup>2</sup> ... 1008 ft<sup>2</sup>



**First Floor**  
Area: 64.1 m<sup>2</sup> ... 690 ft<sup>2</sup>

Total Area: 157.8 m<sup>2</sup> ... 1699 ft<sup>2</sup>



Ramsbottom Office  
11 Bolton Street, Ramsbottom, BL0 9HU  
Telephone: 01706 822630  
Fax: #  
Email: ramsbottom@pearsonferrier.co.uk

[www.pearsonferrier.co.uk](http://www.pearsonferrier.co.uk)



All statements contained in these particulars are for indicative purposes only and are made without responsibility on the part of Pearson Ferrier and the vendors of this property and are not to be relied on as statements or representations of fact. Potential purchasers should satisfy themselves by inspection or otherwise as to the accuracy of such details contained in these particulars.