



pearson
ferrier®



5 CROFTERS BANK
Rossendale, BB4 8FH
£1,175 Per Month

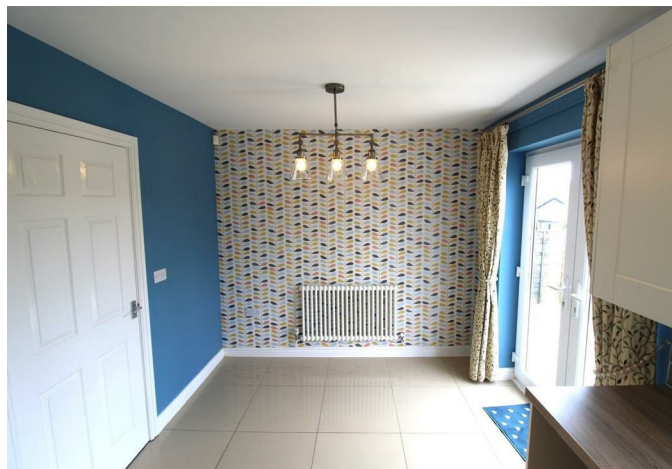
5 CROFTERS BANK

Property at a glance

- modern detached house
- three bedrooms (main ensuite)
- popular location
- countryside views
- generous gardens
- parking

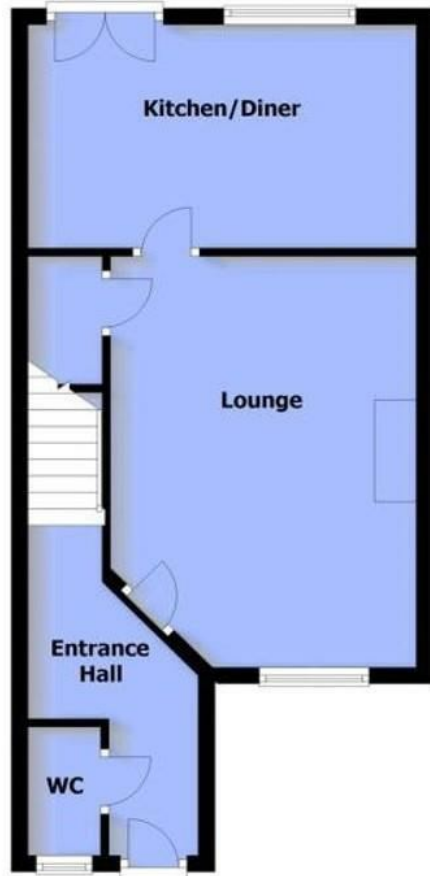
Crofters Bank, Loveclough is a smartly presented, three bedroom detached house, located on this popular residential estate enjoying an elevated setting and westerly aspect with views over surrounding countryside in the distance. The house is a short distance to the village centre and a short drive into Rawtenstall town centre and north towards Burnley. The property has the usual benefits of gas fired central heating and is PVC double glazed, the accommodation briefly comprises; entrance porch with wc/cloaks and stairs to the first floor, living room, fitted dining kitchen, first floor, three bedrooms the main with ensuite and an additional bathroom. Outside there is a garden forecourt and side parking space and a generously sized enclosed rear lawned garden and patio area. Viewings will be available from the end of April.

Council Tax: C
EPC: D

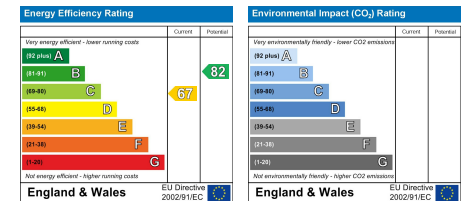




Ground Floor



First Floor



Ramsbottom Office
 11 Bolton Street, Ramsbottom, BL0 9HU
 Telephone: 01706 822630
 Fax: #
 Email: ramsbottom@pearsonferrier.co.uk

www.pearsonferrier.co.uk



All statements contained in these particulars are for indicative purposes only and are made without responsibility on the part of Pearson Ferrier and the vendors of this property and are not to be relied on as statements or representations of fact. Potential purchasers should satisfy themselves by inspection or otherwise as to the accuracy of such details contained in these particulars.