



FLAT 27 THE LANDMARK  
Radcliffe, M26 1QG  
Offers In The Region Of £120,000



# FLAT 27 THE LANDMARK

## Property at a glance

- deceptively spacious first floor apartment
- two bedrooms (master with ensuite shower room)
- within close proximity to local amenities, including schools, shops, and the vibrant nightlife of Whitefield with its array of bars and restaurants
- Commuters will appreciate the easy access to Whitefield Metrolink Station and nearby motorway networks, facilitating seamless travel to Manchester City Centre and beyond
- Ideal for first-time buyers embarking on their property journey or Buy to Let property investors expanding their portfolio
- PVC double glazing & electric heating
- spacious lounge
- modern fitted kitchen
- modern family bathroom
- communal allocated parking and communal gardens

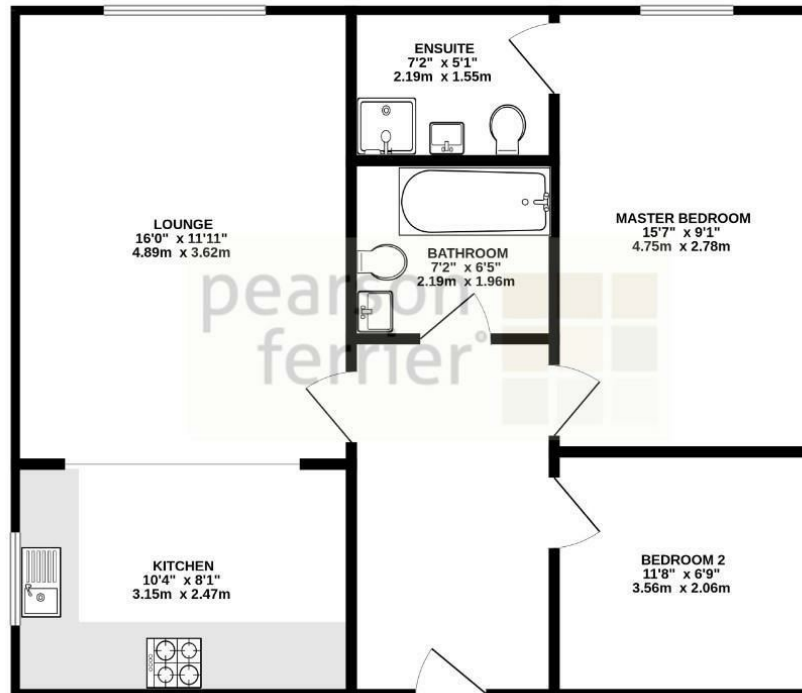
A deceptively spacious two bedroom first floor apartment within close proximity to local amenities, including schools, shops, and the vibrant nightlife of Whitefield with its array of bars and restaurants. Commuters will appreciate the easy access to Whitefield Metrolink Station and nearby motorway networks, facilitating seamless travel to Manchester City Centre and beyond. Ideal for first-time buyers embarking on their property journey or Buy to Let property investors expanding their portfolio, early viewing is highly recommended to avoid any disappointment further features include: PVC double glazing, electric heating, spacious lounge, modern fitted kitchen, two generous sized bedrooms (master with ensuite shower room) and a modern family bathroom. Outside - communal allocated parking and communal gardens.



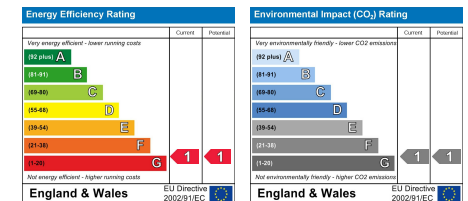




GROUND FLOOR  
680 sq.ft. (63.2 sq.m.) approx.



TOTAL FLOOR AREA: 680 sq.ft. (63.2 sq.m.) approx.  
Whilst every attempt has been made to ensure the accuracy of the floorplan contained herein, measurements of doors, windows, rooms and any other items are approximate and no responsibility is taken for any error, omission or mis-statement. This plan is for illustrative purposes only and should be used as such by any prospective purchaser. The services, systems and appliances shown have not been tested and no guarantee as to their operability or efficiency can be given.  
Made with Metagis (2025)



Radcliffe Office

44 Blackburn Street Radcliffe, Manchester, M26 1NQ

Telephone: 0161 725 8155

Fax: #

Email: radcliffe@pearsonferrier.co.uk

[www.pearsonferrier.co.uk](http://www.pearsonferrier.co.uk)

All statements contained in these particulars are for indicative purposes only and are made without responsibility on the part of Pearson Ferrier and the vendors of this property and are not to be relied on as statements or representations of fact. Potential purchasers should satisfy themselves by inspection or otherwise as to the accuracy of such details contained in these particulars.

